



Sensitivity of the Greenland mass and energy balance to uncertainties in key model parameters

Tobias Zolles^{1,2} and Andreas Born^{1,2}

¹Department for Earth science, University of Bergen, Bergen, Norway

²Bjerknes Centre for Climate Research, Bergen, Norway

Correspondence: Tobias Zolles (tobias.zolles@uib.no)

Abstract. We investigate the sensitivity of a glacier surface mass and energy balance model using a variance based analysis, for two distinct periods of the last glacial cycle: present day climate and the Last Glacial Maximum (LGM). The results can be summarized in three major findings: The sensitivity towards individual model parameters and parameterizations is neither invariant in space nor in time. The model is most sensitive to uncertainty related to down-welling long-wave radiation. Turbulent latent heat flux has a sizable contribution to the surface mass balance uncertainty in central Greenland today and over the entire ice sheet during the cold climate of the LGM, in spite of its low impact on the overall surface mass balance of the Greenland ice sheet in modern climate. We conclude that quantifying the model sensitivity is very helpful for the subsequent tuning of free model parameters, because it clarifies the relative importance of individual parameters and highlights interactions between them that need to be considered.

...for tuning free model parameters...

Aschwanden et al (2019) has similar conclusions.

10

1 Introduction

Of the many challenges to accurately simulate past variations in the volume of the Greenland ice sheet (GrIS) and to project its future contribution to sea level rise, recent studies agree that the uncertainty associated with surface mass balance (SMB) is among the most important (Plach et al., 2019; Aschwanden et al., 2019).

Models to calculate SMB spread a whole range of complexities from empirical index models that only account for air temperature (Ohmura, 2001; Zemp et al., 2019), or temperature and solar radiation (Robinson et al., 2011), to coupled atmosphere-snow models that simulate the snowpack in multiple layers and a full representation of the atmospheric circulation, based on physical first principles (Lehning et al., 2002; Fettweis, 2007; Noël et al., 2018). On this spectrum, the empirical models perform well for the observational period and when the temperature sensitivity of the SMB is well known, but are hard to constrain for temporal and spatial variations and become unreliable for conditions outside their relatively narrow tuning interval (van de Berg et al., 2011; Plach et al., 2019). This is unfortunate because while their low computational requirements make these models attractive for the long integration times that are needed to simulate continental ice sheets, their shortcomings severely limit

Variations of what? I think there is something missing here.

Rephrase to avoid starting with "this", clearly state subject instead.



the usefulness of these results. On the other hand, detailed snow models and especially those coupled with regional atmosphere models are too expensive to run for long periods of time. This situation motivated the development of models that balance the defensible representation of the relevant physical processes with computational efficiency (Krapp et al., 2017; Krebs-Kanzow et al., 2018; Born et al., 2019).

5 In this study, we use the BErgen Snow SIMulator (BESSI), a model that is designed to include all relevant physical mechanisms with reasonable detail but specifically prepared for long integration times by reducing its computational requirements and by strictly conserving mass and energy (Born et al., 2019). Adding to the original model version, we now include parameterizations for snow aging and turbulent latent heat flux while limiting the model domain to only Greenland at a resolution of 10 km. Three different snow aging parametrizations are ~~used~~ based on Oerlemans and Knapp (1998), Aoki et al. (2003), and
10 Bougamont et al. (2005).

Multiple studies have investigated the impact of the turbulent latent heat flux on the surface mass balance (Box and Steffen, 2001; Box et al., 2004; Van Den Broeke et al., 2008; Cullen et al., 2014; Noël et al., 2018). They find a relatively small impact of the vapor fluxes on the Greenland ice sheet total mass balance ($\approx 5 \text{ Gta}^{-1}$, Cullen et al., 2014), but its local impact can be up to 20% of the annual accumulation (Box et al., 2004). It is difficult to assess the importance of this component for different
15 climatic settings, as Box and Steffen (2001) have shown that the choice of the calculation method impacts the results greatly in regions of low flux like the dry interior zone of Greenland. This is exacerbated by the fact that turbulent latent heat fluxes are mostly negative in winter under the present climate conditions, and positive in summer so that the sign of the net flux may change with changing climate. During the colder climate of the glacial a much larger impact of the turbulent latent heat flux can be assumed, similarly to the much greater importance it currently has in Antarctica (e.g., Gallet et al., 2014; Van Wessem et al.,
20 2018). A parametrization based on the bulk-method by Rolstad and Oerlemans (2005) has been added to BESSI to simulate the turbulent latent heat flux.

To assess the sensitivity of the new parameterizations and that of BESSI overall, we employ a variance based approach (Saltelli et al., 2000, 2006, 2010; Sauter and Oblitner, 2015), that has previously been used to quantify the sensitivity of a glacier model (Zolles et al., 2019). Following our model's design goal to be used over time scales of glacial cycles and
25 accounting for potentially different sensitivities under different climate boundary conditions, we analyze two large ensembles with a total of 16,500 simulations, for present day (PD) climate and that of the Last Glacial Maximum (LGM). The result is rich information on what parameters and parameterizations have the largest impact on the model's performance, how this sensitivity varies in different regions of Greenland and over time. This knowledge enables a balanced calibration of the model
as it prevents parameters to be specifically adjusted to the study location and time (Beven, 1989).

30 The revised model is described in section 2. The sensitivity of multiple model output variables to model parameters, including those for the new parameterizations for turbulent latent heat flux and snow aging, is presented in section 3. After that, we discuss our findings in section 4 and conclude in section 5.

I don't quite understand this sentence. What is a "balanced" calibration, and what do you mean with "prevents...to the study location and time"? (I'm guessing you're saying you don't want to overfit the parameters?)



2 Model description and study setup

The study uses the efficient mass and energy balance model BESSI, which is designed to simulate the mass balance over long time scales (Born et al., 2019). The energy exchange of the snow with the atmosphere is altered in the model version used here, while the subsurface and internal processes are unchanged from the published version. It was enhanced to include the turbulent latent heat flux and multiple more complex snow albedo schemes were added. The model description given in the following will focus entirely on the snow surface interaction with the atmosphere. For the numerical description and subsurface processes like firnification and heat conduction see Born et al. (2019).

The model setup used here has a 10 km horizontal grid over the domain of Greenland. The vertical is discretized using a mass following grid with up to 15 layers. The mass of each layer ranges 100 - 500 kgm⁻². Simulations require daily input of air temperature, total precipitation, solar radiation and its reference height. Humidity is an optional input which is required if the turbulent latent heat flux is computed. The air temperature is the only meteorological input which is downscaled to the actual model topography. The output written by the model can be adjusted by the user ranging from daily over monthly to annual values. Output variables include: surface mass balance, melt of snow, melt of ice, runoff, refreezing, albedo, turbulent latent heat flux, a mask containing snow, land, ice and water as well as the 3-dimensional grid values for snow mass, snow density, snow temperature and liquid water mass.

How do you downscale temperature, and how do you treat the other variables?

2.1 Surface energy fluxes

The energy exchange between the surface and the atmosphere comprises five different processes, of which two also imply a change in mass: The short-wave radiation (Q_{SW}), the long-wave/thermal radiation (Q_{LW}), the turbulent sensible heat flux (Q_{SH}), the turbulent latent heat flux (Q_L) and the heat flux associated with precipitation (Q_P).

The total surface flux can be expressed as:

$$c_i m_{s,1} \frac{\partial T}{\partial t} \Big|_{surface} + Q_M = Q_i + Q_M = Q_{SW} + Q_{LW} + Q_{SH} + Q_L + Q_P \quad (1)$$

where the left hand side denotes the resulting temperature change of the snow/ice (Q_i) and the available energy for melting (Q_M) if the melting point is reached. Due to the implicit scheme the model uses, no melt is calculated at first, but only energy fluxes and temperatures (even above 273 K). The actual melt is calculated explicitly each time step for the excess heat above the melting point. The mass flux of the water vapor is also calculated explicitly.

2.1.1 Short-wave radiation and albedo parametrization

The energy input to the surface from solar radiation is calculated by using a broadband albedo value:

$$Q_{SW} = (1 - \alpha) SW_{in} \quad (2)$$

where α denotes the surface albedo, either α_s for snow or α_i for ice and SW_{in} the incoming short wave radiation at surface height. The albedo value is assumed constant with respect to the solar incidence angle, but undergoes temporal and spatial



variations depending on surface properties. We implement four albedo parametrizations of different complexity to simulate the snow albedo. They all have a common maximum albedo value for fresh snow (α_{fs}), minimum value for aged snow (firn α_{fi}), and ice albedo (α_i), but vary in how they calculate the aging.

Constant: This simple parametrization only uses constant values for dry snow ($\alpha_s = \alpha_{fs}$ $T_S < 273K$), wet snow ($\alpha_s = \alpha_{fi}$ $T_S = 273K$), and ice (α_i). This parameterization has been used before in BESSI (Born et al., 2019).

Oerlemans and Knapp (1998): This parametrization assumes an exponential decay with time of the fresh snow albedo to a final value of old snow albedo (Oerlemans and Knapp, 1998):

$$\alpha_s = \alpha_{fi} + (\alpha_{fs} - \alpha_{fi}) \exp\left(-\frac{t_{fs} - t}{t^*}\right), \quad t^* = \begin{cases} 30\text{d}, & T_S < 273K \\ 5\text{d}, & T_S = 273K \end{cases} \quad (3)$$

Why 273K, not 273.15K for the melting point?

where t_{fs} denotes the last day of snowfall, t the current day (time step) with t^* as the characteristic time in days. This or similar parametrizations are usually optimized for the decay rate t^* using observations of albedo or mass balance (e.g., Oerlemans and Knapp, 1998; Klok and Oerlemans, 2004; Bougamont et al., 2005). The very fast decay at the melting point was chosen to account for our very large upper grid box which would likely already be wet if the real surface was resolved. Equation 3 does not consider shallow snow packs, where underlying ice or dirty firn albedo may reduce the albedo.

Bougamont et al. (2005) modified the parametrization by Oerlemans and Knapp (1998) specifically for the Greenland ice sheet by introducing a snow temperature-dependent decay rate:

$$t^* = \begin{cases} 100 \text{ d}, & T_S < 263K \\ 30 \text{ d} + 7\text{d} \cdot (273K - T_S), & 263K \geq T_S < 273K \end{cases} \quad (4)$$

This results in the same t^* of 30 d as Oerlemans and Knapp (1998) for 273 K. This parameterization furthermore introduces a wetness-dependent albedo decay, which assumes a thin layer of water at the surface according to

$$\alpha_s = \alpha_{fi} - (\alpha_{fi} - \alpha_s) \cdot \exp\left(-\frac{w_{surf}}{w^*}\right). \quad (5)$$

Here w_{surf} denotes the thickness of the water layer and w^* is a characteristic water layer thickness. Since BESSI does not explicitly simulate water at the surface, this was adapted for this model by using a simple linear parametrization. The decay rate increases depending on the liquid water content ζ (see 2.2 for details about the liquid water content):

$$t^* = 15 - 14 \cdot \frac{\zeta}{\zeta_{max}} \text{ d}, \quad T_S = 273K \quad (6)$$

Aoki et al. (2003): The final albedo parametrization available in the model uses both a fixed and a temperature dependent decay rate, rather than keeping it constant or relating it to the time since the last snowfall.

$$\alpha_s(t) = \min\{\alpha_s(t-1) - ((T_S - 273 \text{ K}) \cdot k + c), \alpha_{fi}, \alpha_s(t-1)\} \quad (7)$$

Clarify. Is it fixed or T-dependent? "Constant" is more appropriate than "fixed".



[previous](#)

where t and $t - 1$ are the current and the ~~last~~ time step, α_s the snow albedo and $k = 1.35 \cdot 10^{-3} \text{K}^{-1}$ and $c = 0.0278$ two empirically based constants. The values are based on averaged values from Aoki et al. (2003) for different spectral bands. To account for a faster decay in a wet snow pack it is linearly decreased based on the liquid water content of the topmost layer:

$$\alpha_s(t) = \alpha_s(t) - (\alpha_s(t) - \alpha_{fi}) \cdot \frac{\zeta}{\zeta_{max}} \quad (8)$$

- 5 If the layer is fully saturated with water the snow albedo instantly drops to its minimum value. In this parametrization the albedo increases if new snowfall occurs, but instead of resetting it to the fresh snow value, it is incrementally increased depending on the amount of fresh snow:

$$\alpha_t = \alpha_{t-1} - (\alpha_{fs} - \alpha_{fi}) \cdot (1 - \exp \frac{-d}{d^*}) \quad (9)$$

with d as the snow depth. The characteristic snow depth d^* is at 3 cm (Oerlemans and Knapp, 1998).

10 2.1.2 Long-wave radiation

The long-wave radiation is a simple parametrization based on the Stefan-Boltzmann relation:

$$Q_{LW} = \sigma(\epsilon_{atm} T_{atm}^4 - \epsilon_s T_s^4) \quad (10)$$

- where σ is the Stefan-Boltzmann constant, T_{air} and T_s are the 2 m air and snow surface temperature, respectively. The emissivity of snow/ice ϵ_s is constant at 0.98. The incoming long-wave radiation is only depending on the actual air temperature and the atmospheric emissivity ϵ_{atm} , as the only free model parameter. The lack of confidence in cloud cover of climate models
 15 in particular during the last glacial cycle, lead to this decision. Though more complex empirical relations exist (e.g., Liston and Elder, 2006), their applicability for other time scales is questionable. We therefore refrain from using these empirical relationships despite the importance of cloud cover, moisture and aerosols. ϵ_{atm} varied over a broad range of 0.6-0.9 following the previous configurations of this or similar models (Greuell and Konzelmann, 1994; Busetto et al., 2013; Born et al., 2019).
 20 Values spanning this entire range may in reality occur simultaneously in different regions of the Greenland ice sheet, but in the current configuration there is only a single atmospheric emissivity value over the entire ice-sheet.

2.1.3 Turbulent sensible heat flux

- The calculation of the turbulent latent heat flux is based on a bulk method (Braithwaite, 2009) which was applied previously on Greenland as residual method (Rolstad and Oerlemans, 2005). This method assumes a constant turbulent exchange coefficient
 25 (C_h) for sensible heat over time and space. The only dependency in the previously published parametrization is on the local wind speed u and air temperature T_{air} :

$$Q_{SH} = \rho_{air} c_p C_h u (T_{air} - T_s) = D_{SH} (T_{air} - T_s) \quad (11)$$



where ρ_{air} is the density of air and c_p the heat capacity of air. Since BESSI does not use wind speed as input field, we simplify the equation with a single turbulent heat exchange coefficient D_{SH} . This is a free parameter and subject of the sensitivity analysis. The values given in Table 1 assume an average wind speed of 5 ms^{-1} if compared to the reported values by Braithwaite (2009). The variation in parameter D_{SH} therefore accounts for both the variability in average wind speed and the efficiency of the exchange C_h .

2.1.4 Turbulent latent heat flux

The previous version of BESSI did not include turbulent latent heat flux. Here it is an optional part of the setup. The implementation is analog to the turbulent sensible heat flux (eq. 11):

$$Q_L = 0.622 \rho_{air} L_v C_h u (e_{air} - e_s) p^{-1} = D_{LH} (e_{air} - e_s) \quad (12)$$

where D_{LH} is the turbulent latent heat exchange coefficient, and e is the water vapor pressure. The parametrization is based on the bulk formulation of Rolstad and Oerlemans (2005) with the latent heat of vaporization L_v and the air pressure p . The latter is calculated from the standard pressure at sea level for each grid point. While Rolstad and Oerlemans (2005) assume the same exchange coefficient C_h for vapor and sensible heat, it has been shown previously that the roughness lengths and the exchange coefficient for momentum and vapor are not necessarily equal (Greuell and Smeets, 2001). Nevertheless, the parameters D_{LH} and D_{SH} are inherently connected by the surface structure (snow/ice) and the wind speed. To account for these points the setup uses two free parameters determining D_{LH} , the turbulent exchange coefficient for sensible heat D_{sh} and $r_{lh/sh}$ which are defined by

$$D_{LH} = r_{lh/sh} \cdot 0.622 L_v D_{SH} / c_p \quad (13)$$

In the setup of this study there are three parameters determining the turbulent latent heat flux. The ratio ($r_{lh/sh}$) accounts for different exchange rates for water vapor and sensible heat. D_{SH} the absolute exchange strength (roughness, wind, stability). The parameter (χ_{QL}) switches the subroutine on and off.

2.1.5 Precipitation heat flux

The heat supplied by precipitation depends on the temperature. An atmospheric temperature of 273 K is the limit of solid precipitation. In the case of snow the solid mass of the topmost grid cell increases by the amount of snow and the heat added to this box reads:

$$Q_{P,snow} = P \rho_w c_i (T_{air} - T_s) \quad (14)$$

while rain is added as liquid water mass to the same cell

$$Q_{P,rain} = P \rho_w c_w (T_{air} - 273\text{K}), \quad (15)$$



where P is the amount of precipitation, ρ_w and c_w the density and heat capacity of water. If the rain freezes or is percolating further down, this is calculated during the balance calculation, and as outlined in the next section.

2.2 Subsurface percolation and refreezing

This is the only part of the subsurface routine which is explained here. Full details are available in Born et al. (2019). The water holding capacity of each layer determines the percolation. The maximum liquid water content ζ_{max} is the parameter subject to the sensitivity analysis:

$$\zeta = m_w/m_s \frac{1}{\rho_w \left(\frac{1}{\rho_s} - \frac{1}{\rho_i} \right)} \quad (16)$$

where m_w , m_s and ρ_w , ρ_s , ρ_i are the mass and density of water, snow and ice, respectively. If the liquid water content ζ exceeds ζ_{max} the liquid water mass percolates to the next cell or is treated as runoff when it leaves the bottom cell.

2.3 Global sensitivity analysis

2.3.1 Theoretical background and setup

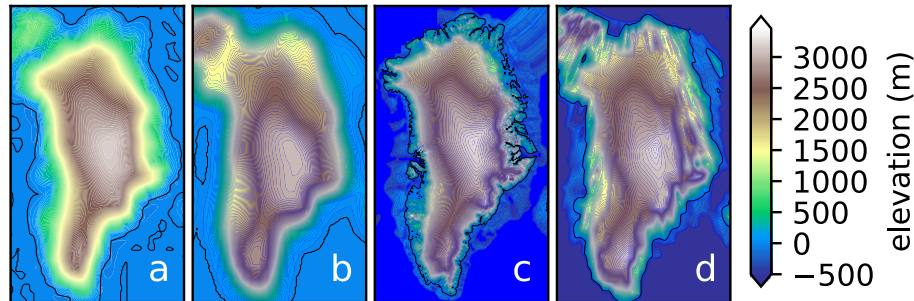


Figure 1. The climate model topography for PD (a) is from the ERAinterim data set, and the LGM (b) is from the CCSM4 simulation. The used model topography for PD (c) is ETOPO and ICE-6G (d) for the LGM. For the plot all topography below 5 m was considered sea level for the climate models.

The global sensitivity analysis is variance based method that allows for a full assessment of the model sensitivity over the entire parameter space. In comparison to other methods, all parameters are changing at the same time. The method has been applied previously to snow (Sauter and Obleitner, 2015) and recently to alpine glaciers (Zolles et al., 2019). It is based on algorithms developed by Saltelli et al. (2000, 2006, 2010), utilizing the setup of the ensemble hypercube using (Sobol et al., 2007). The probabilistic framework provides an estimate of the sensitivity of the model output to the individual inputs, including parameters and data. It is independent of model calibration and tuning. The model output Y is a function of the input parameters X_i : $Y = f(X_1, X_2, \dots, X_n)$. There are two normalized values that quantify the model sensitivity for each input parameter X_i : the first or main order sensitivity index S_{X_i} and the total sensitivity index S_{T_i} of parameter X_i . The first order index denotes the sensitivity of the model towards the parameter X_i only, while the latter includes all the interactions of X_i :
Awkward sentence, not sure what it means. Rephrase or delete.



$$S_{Xi} = \frac{V_{Xi}(E_{X-i}(Y|X_i))}{V_Y} \quad (17)$$

$$S_{Ti} = \frac{E_{X-i}(V_{Xi}(Y|X_i))}{V_Y}, \quad (18)$$

where E is the expectation value of a given observable such as the SMB. V_Y is the total variance of the given variable and V_{Xi} the variance that only depends on the input parameter X_i . X_{-i} denotes the whole parameter space excluding any variation in X_i . The first order index calculates the mean model output ($E_{X-i}(Y|X_i)$) for each representation of X_i and then assesses the sensitivity by calculating the variance for all values of X_i .

The total index can be compared to the local sensitivity index that is often determined around the optimal model setting. $V_{Xi}(Y)$ varies the parameter X_i along its dimension, but it is computed for all possible points of the parameter space instead of the optimal one. For the detailed algorithm refer to Saltelli et al. (2010). As under-sampling is assumed by the relatively low numbers of simulations, bootstrapping is applied to the ensemble and multiple sensitivity values are reported. Both indices are normalized with the variance of the whole ensemble V_Y .

To study the applicability of BESSI for the use over the whole glacial cycle the model sensitivity and uncertainty is assessed for two different time periods. ~~To consider a wide range of climate conditions in Greenland two extreme cases of the whole glacial cycle were chosen:~~ the PD period using the ERA-interim reanalysis data (Uppala et al., 2011) ranging over 38 years from 1979 to 2017 and 30 simulation years of the climate of the last glacial maximum (LGM, 21,000 years before present) of the Community Climate System Model version 4 (CCSM4) (Brady et al., 2013). The simulation of the LGM shows a cold state with an annual mean temperature over the model domain of 249 K, while the current climate is relatively warm with ^{an} annual mean of 262 K. As the ice sheet has different shapes, these climatological comparisons are only done for the entire model domain instead of the ice sheet domain. The precipitation averages are around 400 kg m⁻² for the LGM and 570 kg m⁻² for PD. The annual mean solar radiation is about 10% higher for the LGM, though the seasonal cycle deviates drastically from PD. The surface mass balance model uses a static topography, which is based on ETOPO (Amante and Eakins, 2009) for PD and on ICE-6G (Peltier et al., 2015) for the LGM (fig. 1). There is an interpolation artifact in the PD simulation in the far north, but as no ice is present in this region of Greenland it does not influence the analysis. BESSI was run for 500 years with the same forcing data back and forth to account for the long response time of the firn cover. 400 years was shown to be sufficient to develop a dynamically and thermodynamically stable firn cover, even in the regions of very low accumulation. The analysis shown throughout this study is entirely based on an assessment of the last 100 years of every simulation.

The model has nine free parameters which are listed together with their plausible range in Table 1. The initial ensemble was generated with using a Sobol sequence which consisted of 2000 × 9 members for PD and 1000 × 9 for the LGM. This sequence spans a 9-dimensional unit hypercube. It is split into two subsets A and B each consisting of one half of the initial sequence (1000 × 9). For computing both sensitivity indices the estimator from Sobol et al. (2007) was used. It creates an additional set of matrices $B_{A,i}^j$, which are based on the matrix B where the values for parameter X_i are replaced with those from subset

I don't understand this sentence. Too colloquial. I think I know what you mean, but it should be rephrased. Do you mean the firn pack is in equilibrium with the parameter (or something), or that you select the nine parameters that you think are the most relevant. Elaborate on our choices instead of just referring to the table.



Table 1. The parameter ranges for the free model parameters are rather broad and based on previously published values (Born et al., 2019). The firn albedo may not exceed the fresh snow albedo, and its value was limited to 0.65 during the LGM.

#	Name	Abbreviation	range	unit
1	fresh snow albedo	α_{fs}	0.65 - 0.9	
2	firn albedo	α_{fi}	0.45 - 0.7 (0.65) ¹	
3	ice albedo	α_i	0.3 - 0.4	
4	turbulent heat exchange coefficient	D_{SH}	5 - 25	Wm^{-2}K
5	ratio of sensible and latent heat flux	$r_{lh/sh}$	0.5 - 1.2	
6	emissivity of the air	ϵ_{atm}	0.6 - 0.9	
7	switch for turbulent latent heat flux	χ_{QL}	on / off	
8	albedo module	χ_α	cnst,Oer,Bou,Aok	
9	maximum liquid water content	ζ_i	5 - 15	% pore volume

Reference

Add column with reference to justify range. Also consider column listing the distributions used (uniform, random)

A. The matrices A , B and B_A^i are then used to estimate the model sensitivity. The whole ensemble consists of $N * (2 + k)$ members, with N being the base sample (1000 in the case of PD) and k the amount of parameters. A detailed description of the algorithm can be found in (Sobol et al., 2007) and (Saltelli et al., 2010).

The full ensemble for present day climate has 11000 members, that for LGM climate 5500. The normalized parameter dimensions are linearly transformed to the intervals given in table 1, with the exception of the latent heat flux switch and the albedo module. These two parameters have two, respectively four discrete values, and the parameter space is split equally between them. The model simulations are carried out with the generated parameter matrix. We are using bootstrapping to estimate the sensitivity indices. For each bootstrap the equations 17 and 18 are evaluated. Finally, we report the mean sensitivity indices and their standard deviation. The results were checked for consistency ($\sum S_{Xi} \leq 1$, $S_{Xi} \leq S_{Ti}$). The ensemble size used during the LGM is on the absolute lower limit of applicability for GSA, as the standard deviation of the sensitivity indices is large (not shown). It works fine for the output quantities analyzed, some with increased uncertainty associated to the absolute values, but fails for the 10 m firn temperature for example. Due to the larger ensemble the confidence in PD ensemble is higher, but not by a large enough margin to justify the additional computation time relative to the 5500 members of the LGM ensemble. BESSI is a complex model with all parameters interacting and S_{Xi} provides very little information. Therefore, the results mainly focus on the total sensitivity index.

The GSA was computed for five different outputs: albedo, vapor flux, snow melt, surface mass balance and the average surface temperature. These are based on average yearly sums or averages over 100 years. Surface temperature results are rather uncertain and only tendencies can be extracted as it is largely influenced by the annual cycle and fresh snow reseeded on an ice surface.

Too colloquial

In other words, for all parameters, values are drawn using a uniform distribution, except albedo and latent heat flux, where 2 resp. 4 cases are drawn with equal probability. Correct?



Remove total effects and
consider collapsing into
one, colored by elevation
band.

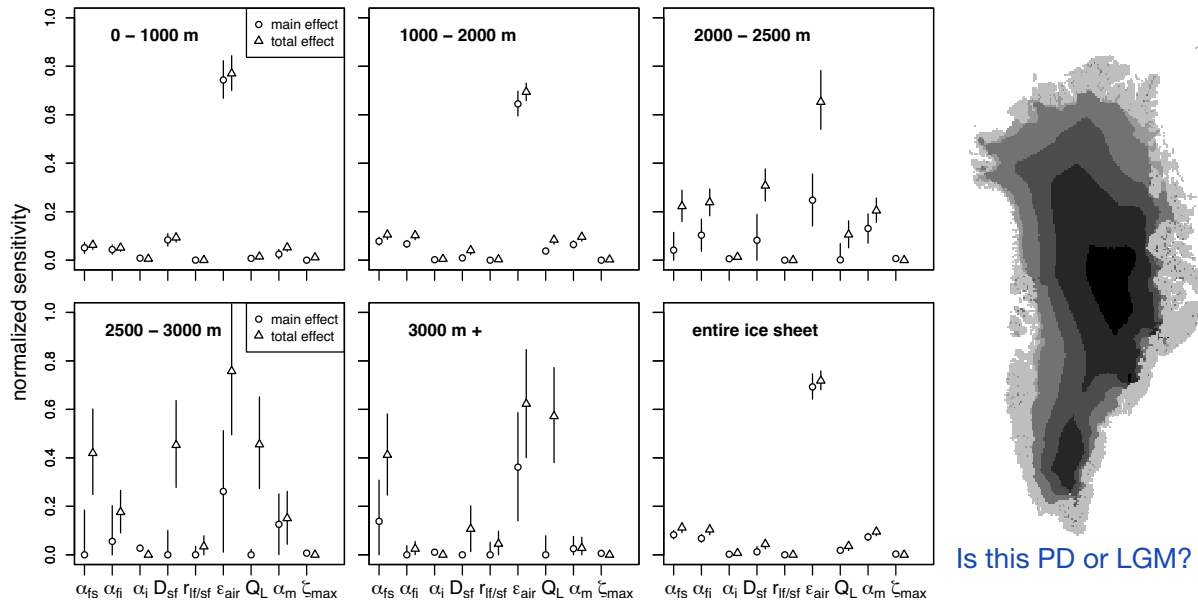


Figure 2. The global sensitivity analysis of the SMB provides the main order effect (circle) and the total effect (triangle). The two indices are displayed for all 9 parameters over the different elevation bands ranging from 0-1000, 1000-2000, 2000-2500, 2500-3000 and above 3000 m. The symbol represents the mean value of the sensitivity index with the bars as $\pm 1\sigma$. The elevation bands are displayed over Greenland on the right, the analysis is only done for cells where ice is present.

3 Results

3.1 Global sensitivity analysis - GSA

The main focus of the results ^{is} will be on the surface mass balance and discussion is limited to the total sensitivity index (S_{Ti}), due to the low information that can be extracted from S_{Xi} in complex models. The sensitivity of ~~the~~ SMB changes for different elevation classes for the present day ice sheet is shown in Fig. 2. ^{Being more specific makes the language flow better, e.g.: At elevations below 1000m, the largest...} In the region of lowest elevation the largest sensitivity is associated with the parameter uncertainty of the atmospheric emissivity ϵ_{atm} with a normalized total sensitivity index of about 0.8. The second most influential parameter is the turbulent heat exchange coefficient D_{SH} , followed by a slight influence of the snow albedo. The general features are similar up to 2000 m, with a slight decrease in the sensitivity to D_{SH} . Above 2000 m the SMB is sensitive to a much wider range of parameters: the atmospheric emissivity, the fresh snow α_{fs} and firn albedo α_{fi} , the choice of albedo module χ_α , the turbulent heat flux coefficient and the turbulent latent heat flux switch χ_{QL} . While the importance of χ_{QL} is increasing with elevation, the importance of α_{fi} decreases. The sensitivity of the fresh snow albedo α_{fs} increases up to 0.4 at 2500, but not further. With the increasing sensitivity of multiple parameters the relative sensitivity of ϵ_{atm} decreases, leading to χ_{QL} almost being equally important in the region with the highest average elevation. The local SMB in ~~the~~ regions above 2000 m is impacted by multiple parameters, while the integrated mass balance is dominated by the atmospheric emissivity with the snow albedo and turbulent fluxes having a minor influence.

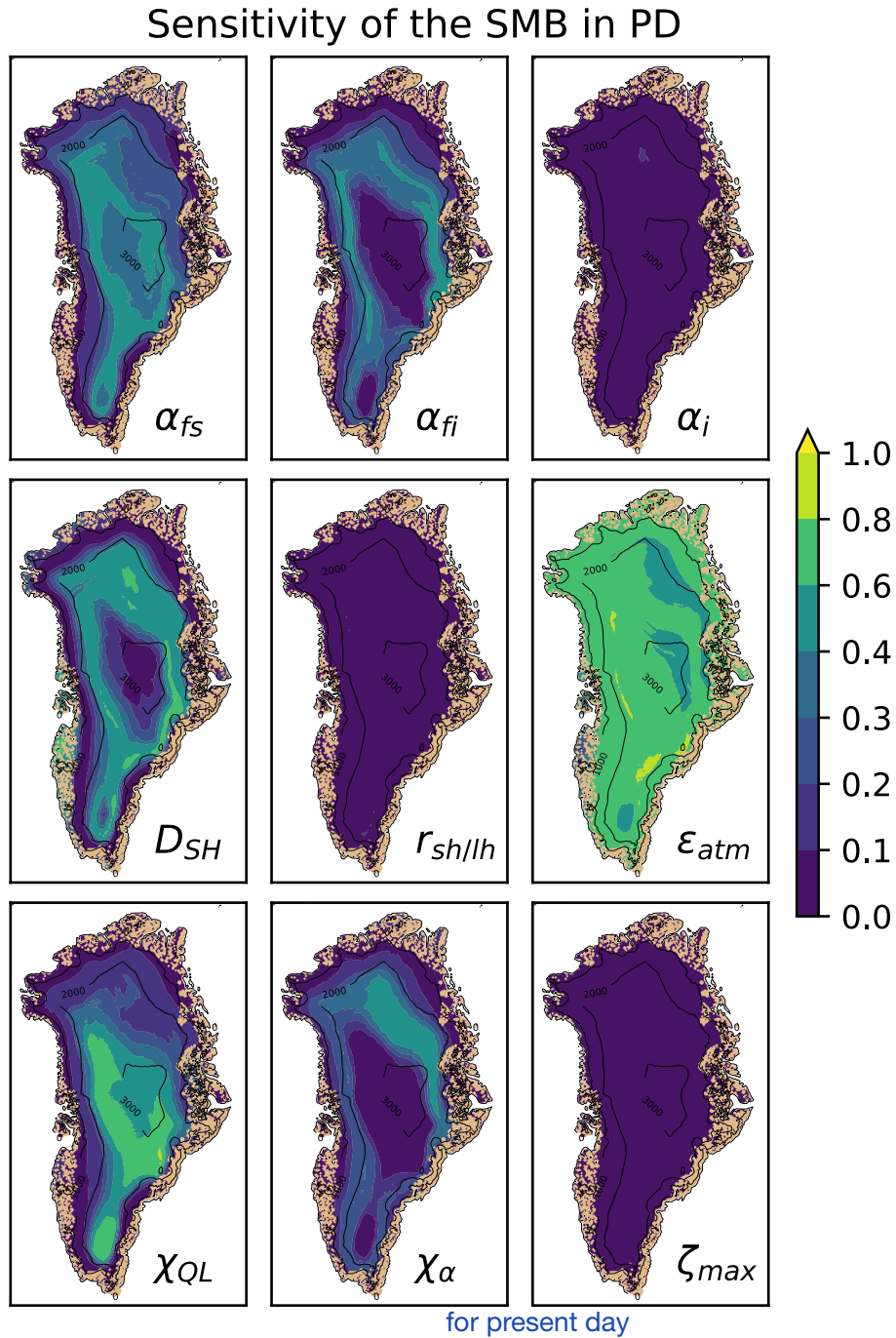


Figure 3. The total sensitivity index of the mass balance of every parameter is displayed for every ice covered grid cell. The albedo module and the latent heat flux switch have discrete values. Absolute values are not to be taken too seriously due to the setup of the ensemble and the maps do not include any uncertainties of the total sensitivity indices.



“The model” is the subject in the first part of the sentence thus you need to introduce the new subject χ_{QL}

Be specific. Like “at elevations < 500m” or “at very low (<500m) elevations”

The GSA was also calculated for each grid cell individually. The general trends are similar to the elevation average, but the structure is much more complex. The global sensitivity maps for all parameters are displayed in Figure 3. The model is sensitive to ϵ_{atm} over the entire ice sheet. Its impact is only reduced at the west coast glaciers where D_{SH} is more sensitive and the north west where the choice of albedo module is important. The model is sensitive to χ_{QL} in the interior of Greenland, and can be considered a sensitive parameter for most of the ice sheet apart from the regions of very high melt at low elevation. In the interior of very high elevation the most sensitive of the three snow albedo related parameters is the one for fresh snow α_{fs} , while at lower elevation firn snow albedo α_{fi} becomes more important and also the chosen albedo parameterizations χ_{α} becomes more important, in particular in the north-east. The SMB is sensitive to D_{SH} at very low elevations in the west and on the ice-sheet above 1500 m, only at the top of the ice sheet its influence is reduced. The ice albedo α_i plays a minor role in the north, but is generally of very low impact. Additionally, ζ_{max} as well as $r_{lh/sh}$ are of minor importance.

The dominance of ϵ_{atm} is a result of the change in total heat flux associated with its parameter uncertainty. At an annual average of -10°C , a change of ϵ_{atm} from 0.6 to 0.9 increases the heat flux by 80 Wm^{-2} , while a change of albedo from 0.9 to 0.6 does only increase the energy input by 40 Wm^{-2} for typical values of solar radiation. Similarly, the sensible heat flux is smaller than the other heat fluxes over most of the ice sheet (monthly averages from -20 to $+50\text{ Wm}^{-2}$ with $D_{SH} = 12\text{ Wm}^{-2}\text{K}^{-1}$) so even a doubling will not be larger than the change of atmospheric emissivity on an annual basis. The relatively low impact of the ice albedo α_i is due to the small exposure time and the small parameter range. An ice albedo change of 0.3 to 0.4 will at most result in an annual average energy change of $10\text{--}20\text{ Wm}^{-2}$, but the ice is never exposed for the whole season. Rather the date of ice exposure, which is a result of the energy fluxes prior to its exposure, is much more important as this is associated with an surface albedo change from 0.55–0.9 to 0.3–0.4. The SMB in regions above 1000 m is clearly sensitive to the snow albedo, which in turn is a function of snowfall, snow temperature and the chosen albedo parametrization. Each albedo model treats these processes separately. While the basic one only distinguishes between dry and wet snow, the others account for snow aging ranging from time over time-and-temperature to time-temperature-wetness dependency. The choice of albedo model is not important in the interior of Greenland, as temperatures are low, albedo decay is slow and the snow does not get wet. At slightly lower elevations there is an interplay of the fresh snow α_{fs} and firn albedo α_{fi} and the chosen decay parameterization χ_{α} , with a bit larger impact of the fresh snow albedo, as snowfall is not frequent and decay rates at medium temperatures are of the order of a few weeks (Sec. 2.1.1). An exception is found in the north east, which is characterized by the driest climate on Greenland. The less frequent precipitation, and therefore albedo resetting explains a larger dependency on the decay rate and the albedo module. This is furthermore an area higher up on the Greenland ice sheet where χ_{QL} is less important. Due to the low amount of precipitation the SMB is quite sensitive to changes in the surface energy balance. Extreme ensemble members (low albedo, high emissivity) lead to a melting state, negative ensemble members result in very large changes in SMB relative to the small changes associated with condensation and sublimation. In this dry region a very large atmospheric emissivity is not realistic. The large impact of D_{SH} at the western coast is due to the large air-surface temperature difference, while in the interior Greenland the atmosphere is more in balance with the snow surface. Clarify

During the LGM more or less the same features are visible, but shifted to lower elevations (fig. 4). During the much colder and dryer LGM the lowest region shows an increased importance of the choice of the snow albedo module. The turbulent latent

Be consistent within a sentence, don't use the math symbol in one instance and the descriptive words in another.

Rephrase sentence and avoid “negative ensemble member”.

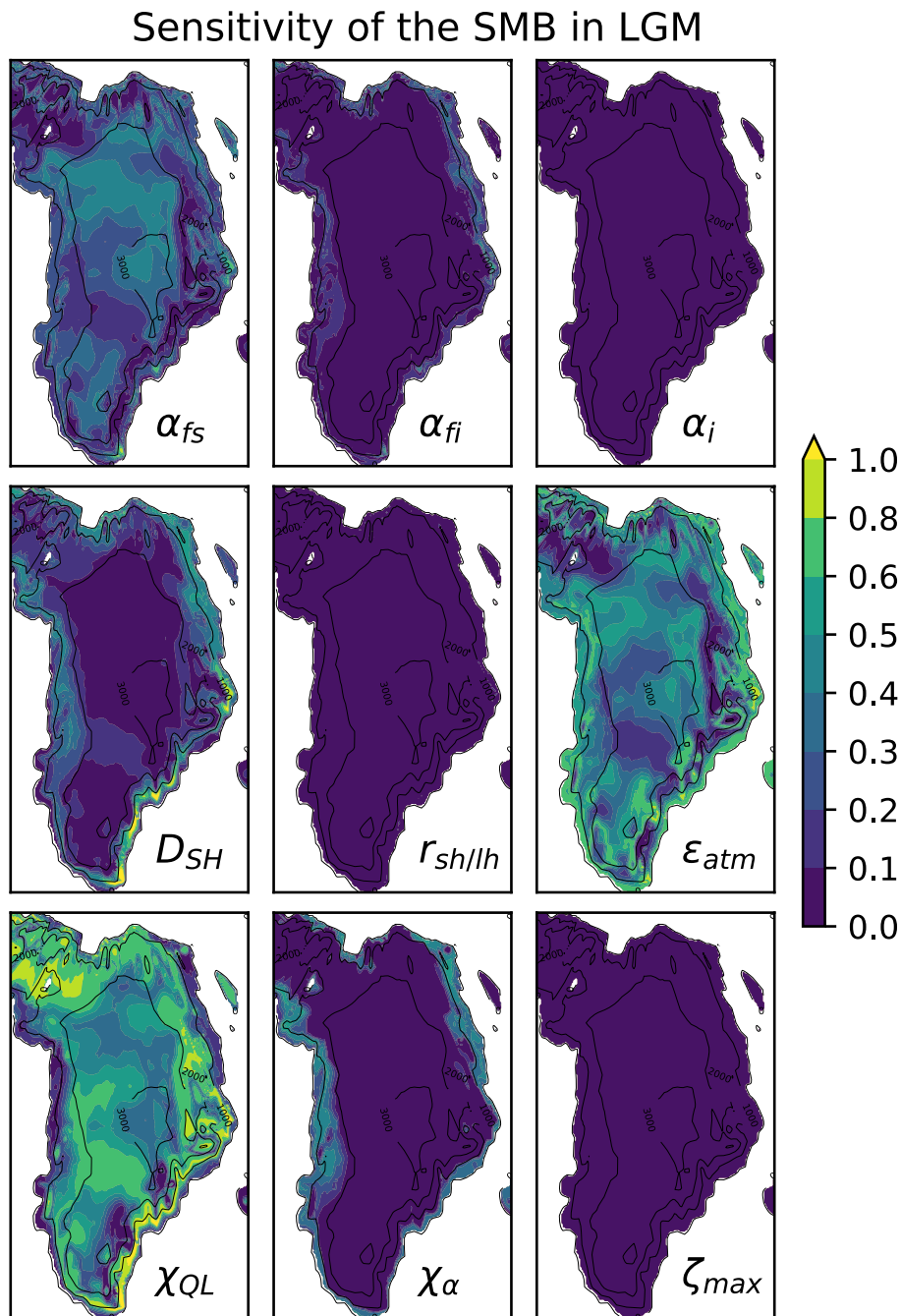


Figure 4. The total sensitivity index of the surface mass balance for the LGM is more variable than during PD. The model shows the greatest sensitivity towards $Q_{Lon/off}$ and the atmospheric emissivity followed by the fresh snow albedo. Firn albedo and the albedo module as well as the turbulent exchange coefficient are important around the margin.

Explain what is shown in the figure before delving into the discussion.



Reference figure 2

heat flux switch χ_{QL} is as important as the atmospheric emissivity ϵ_{atm} already above 1000 m and the fresh snow albedo α_{fs} is almost as important above 2000 m. The ice sheet integrated SMB shows sensitivity to atmospheric emissivity, the turbulent heat flux coefficient, the latent heat flux switch and the snow albedo. The liquid water content ζ_{max} , the ice albedo α_i and the ratio of latent and sensible heat exchange coefficient $r_{lh/sh}$ do not impact the SMB in either of two climate states. On the local scale χ_{QL} followed by ϵ_{atm} and α_{fs} are the main sensitivity components (fig. 4). The sensible heat flux exchange coefficient D_{SH} is important along the margin with the largest impact in the south-east. The firn albedo and the albedo module are sensitive parameters along the margin, with a bit higher impact of the module along the western side.

Be quantitative and less colloquial

Rephrase this, does not quite make sense.

The increased importance of χ_{QL} is a result of a much colder and dryer climate. The SMB is positive over most of Greenland during the LGM, in the absence of melt, even for extreme parameter combinations, so that the only change in mass balance

is due to sublimation and hoar formation. The dry climate also favors increased sublimation. While during the PD the sign of the vapor flux ~~also~~ undergoes an intra-annual variability, it is mainly a net heat loss for the surface during the LGM. The other sensitive parameters still determine the strength of the sublimation via the surface temperature, because the exponential impact of the surface temperature via Clausius–Clapeyron relation impacts the latent heat flux more than the actual exchange coefficient D_{SH} (eq. 13). The large impact of D_{SH} in the south-east is due to the large temperature difference between the surface and the air-temperature. This region is dominated by intense precipitation and rather warm air masses even during the LGM. There is a precipitation gradient from the western coast to central Greenland, the fewest precipitation amounts are found in the west of Greenland and the south of Elsmere Island due to the presence of the Laurentine ice sheet. Therefore, the albedo module is more important on the western than the eastern margin. The reduced model sensitivity towards ϵ_{atm} is mainly a result of the reduced atmospheric temperature with annual averages being around 10 K lower, resulting in less long-wave radiation and a lower absolute impact of the emissivity.

What is "it"?

Weird statement, I suggest rethinking. If the results are not important, don't discuss them at all.

The sensitivity of the surface albedo, turbulent latent heat flux, snow melt and surface temperature will only be briefly discussed and without additional figures. The global sensitivity for the annual average albedo during PD period is mainly influenced by the fresh snow albedo, with only minor importance of the final firn albedo, ice albedo, the choice of the albedo module, and the atmospheric emissivity at the ice sheet margins. However, this is an interesting result for the model tuning as

Suggest: "whereas the final albedo, ..., only play a minor role."

the atmospheric emissivity should be treated similarly to firn and ice albedo for tuning of the albedo routine.

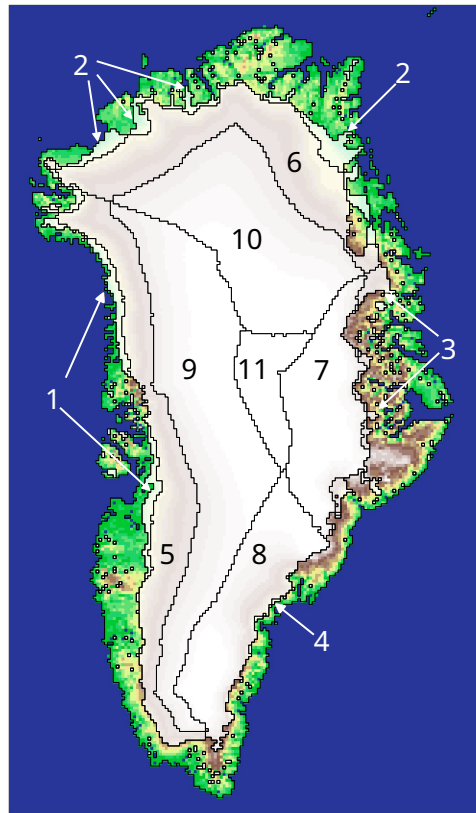
Unclear, rephrase

Besides the switch which disables the turbulent latent heat flux Q_L completely, it is most sensitive to the atmospheric emissivity ϵ_{atm} followed by the turbulent heat flux exchange coefficient D_{SH} , mainly around the margins. In these areas the ratio of turbulent sensible and latent exchange coefficients $r_{lh/sh}$ is a parameter of low sensitivity, as are the snow albedo related ones in the north. The turbulent latent heat flux Q_L is not sensitive to the ice albedo and $r_{lh/sh}$ in the interior of the ice sheet or the maximum liquid water content ζ_{max} globally. This shows that using similar exchange coefficients for moment and water vapor are justified within the framework. During the LGM Q_L shows an increased sensitivity to α_{fs} , while the D_{SH} is less important around the margin, due to lower atmospheric temperatures and slower albedo decay. The albedo module and the firn albedo play almost no role in either case.

The average snow temperature is mainly influenced by ϵ_{atm} , α_{fs} , D_{SH} , χ_{QL} , though uncertainties of the sensitivity are rather large, due to temperature ~~resceding~~ in the event of snowfall on ice or shallow snowpacks.

resetting

Too colloquial



Again start with what is shown here.
 From reading the description I
 cannot figure out what is shown
 here.

Figure 5. The analysis was done on a regional bases. During the present day there are three regions in the west and north from 0-1000-2000-3000 m. The southeast region is precipitation driven and the change in SMB with altitude is less developed, therefore 1000-3000 m is one region. There is one additional region in the center which is at elevations above 3000 m.

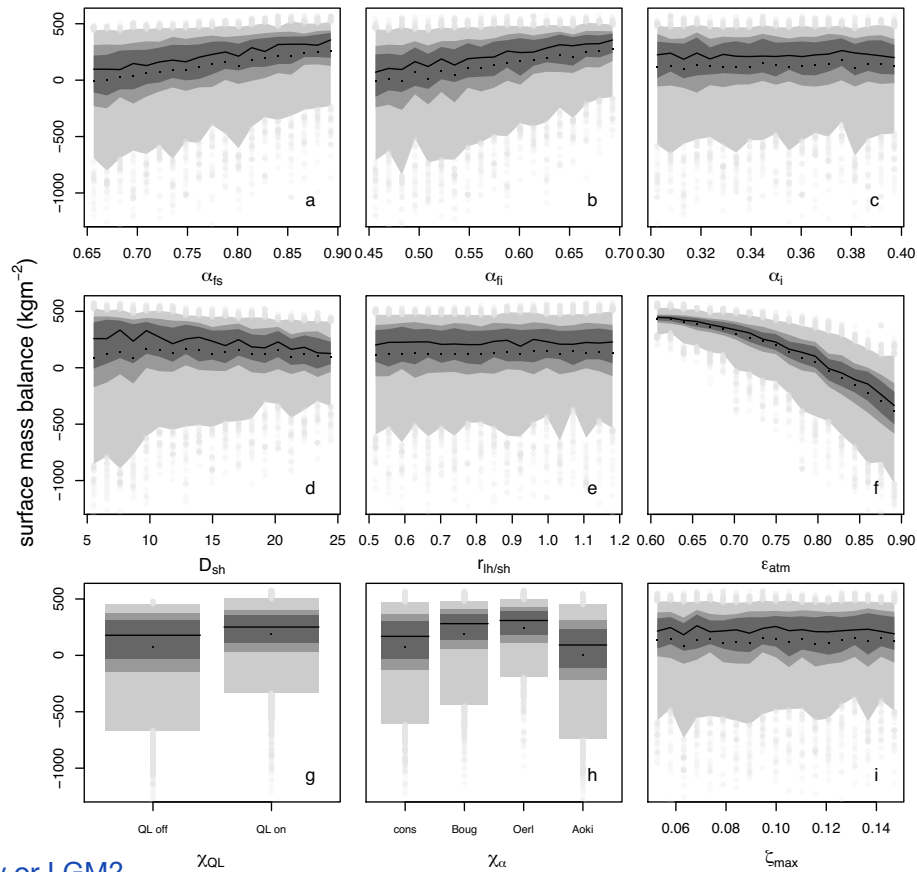
Snow melt is more less linked to the SMB, and shows now significant deviation from the sensitivities reported for the SMB. Just as expected the impact of the latent heat flux switch is much lower.

3.2 Ensemble statistics

The GSA clearly highlights that the mass balance is most sensitive to the atmospheric emissivity and the latent heat flux switch
 5 irrespective of background climate. A drawback of this method is that it provides no information about the sign and absolute magnitude of the SMB changes. Parameters which result in either surface heating or cooling, like the turbulent heat fluxes, require a different analysis. * Albedo increase and atmospheric emissivity decrease will always result in a more positive surface mass balance. For an in-depth analysis of the individual parameter impacts, Greenland was split into 11 different regions for PD and 13 for the LGM (2 more around Elsmere Island) based on elevation and similarity (fig. 5). For each region the parameter
 10 range is split into 20 equally spaced intervals for which the 5, 25, 33, 50, 66, 75, and 95% quantiles are calculated. The binning

Maybe: ...decrease leads to an increase in surface mass balance.

Elsemere Island -> Ellsemere Island



Is this Present Day or LGM?

Figure 6. The ensemble statistics for the surface mass balance for region 5 (west 1000-2000 m) shows the 5/95, 25/75, 33/66 and 50 quantiles in progressively darker shading. Black points represent the ensemble mean and the grey points correspond to the rest of the ensemble, apart from outliers (max 5 per bin allowed), which are removed to improve readability. Each plot represents the range of one parameter with α_{fs} , α_{fi} and α_i in the top row, D_{SH} , $r_{lh/sh}$ and ϵ_{atm} in the middle and $Q_{Lon/off}$, χ_α and ζ_{max} at the bottom. As $Q_{Lon/off}$ and χ_α have two and four discrete values, the parameter range is not split in 20 intervals.

is necessary as the ensemble was not created with parameters at regularly spaced intervals. It shows the behavior of the entire or a sub-ensemble with regard to one parameter. This is most interesting for the parameters where the effect changes sign depending on the atmospheric conditions.

In Figure 6 the impact of the various parameters on the PD SMB is shown for region 5. This is the western region of Greenland ranging from 1000 - 2000 m. The dominant parameter is the atmospheric emissivity ϵ_{atm} . Over the range of plausible values it reduces the median of the SMB by almost 800 kgm⁻² in an accelerating manner. The spread of the ensemble, i.e., the variation of the SMB as a result of other parameters, increases too. The increase of the SMB with the snow albedo related parameters α_{fi} and α_{fs} is smaller and the width of the distribution decreases (panel a,b). Even very low albedo values do not necessarily lead to a negative mass balance in this region. An increase in D_{SH} slightly reduces the median SMB, but the

Rephrase. This is worth expanding on. Maybe use phrases like “emissivity and surface mass balance are inversely correlated”, “non-linear relationship between emissivity and surface mass balance”, etc.



Maybe start with e.g. "In the PD climate, the largest energy source for melt is incoming short-wave radiation. As atmospheric emissivity decreases, less energy for melt is available. (Or similar)

...warming, and potentially early melting of the snowpack, occurs in many grid cells...

spread is decreasing. This will be discussed in detail later. Ice albedo α_i , liquid water content ζ_{max} and $r_{lh/sh}$ have almost no impact. The SMB increases in the presence of turbulent latent heat flux due to the heat loss of sublimation in this region. With all albedo modules the ensemble has a wide spread, but the variation is smallest for the time dependent decay (Oerlemans and Knapp, 1998) which also has the highest median mass balance. The parametrization based on temperature, wetness and time (Aoki) has the lowest median SMB.

The strong impact of the emissivity is due to the larger annual average of the incoming long-wave radiation relative to the other fluxes. At very low atmospheric emissivity ϵ_{atm} the largest energy source during the PD climate is reduced, and ~~little~~ ~~hardly any~~ melt occurs in this region. In the absence of melt, mass balance response is only due to the sublimation and since this process has a modest absolute impact on the SMB, the spread of the ensemble is low. Vice versa at large ϵ_{atm} values

a lot of grid cells will experience a heat up and potential melt of the snow-pack early leading to a positive feedback effect with lower albedo. In agreement with the GSA (fig. 3) the firm albedo α_{fi} is almost as important as fresh snow albedo α_{fs} . The ELA is located in this region and snow temperatures are quite warm, resulting in a large impact of snow albedo decay and its parametrization. The constant albedo parametrization has quite a wide spread, as it is very sensitive around the ELA, changing instantly from α_{fs} to α_{fi} when the snow-pack reaches the melting point. While the albedo parameterizations based on Oerlemans and Knapp (1998) and Bougamont et al. (2005) have a temporal decay relative to the instant one in the constant case, with *Bougamont* having a snow temperature dependent increased decay rate and even more in the wet case. This leads to the low SMB tail of it relative to the other. The last albedo parametrization decays faster than the other two at warmer temperatures, leading to already lower albedo than all other parametrizations before the melting point is reached. Additionally, there is a difference between the models in case of snowfall. *Oerl*, *const* and *Boug* reset to α_{fs} and decay thereafter, while *Aoki* increases the albedo after snowfall incremental with the amount of snowfall.

During the LGM the western region between 1000 - 2000 m (not corresponding to the identical geographical area as PD due to topographic changes) shows positive, but low SMB with a much lower spread of the ensemble. There are three distinct changes: The impact of α_{fi} and χ_α is drastically reduced, χ_{QL} results in a decrease of SMB and the importance of α_{fs} increases relative to ϵ_{atm} . The climate in the west of Greenland in the LGM is characterized by a much lower air temperature, slightly more annual mean radiation and lower precipitation. The lower air temperature reduces the impact of ϵ_{atm} and produces a more positive SEB, which in turn results in lower snow temperatures leading to slower snow albedo decay, no melting and almost no impact of associated parameters. The incremental increase of snow albedo with snowfall with the *Aoki* parametrization, gives slightly lower albedo in the dry climate. During the LGM sublimation prevails over the entire year, but in the absence of melt it results in a mass loss rather than a mass gain as in PD (via cooling and associated reduced melt).

The turbulent sensible heat flux may either be a heat loss or heat gain for the surface, making it particularly interesting. The turbulent heat exchange coefficient D_{SH} is the parameter determining its strength. It is very different depending on the region (fig. 7), which is why we present a deeper look on this particular parameter. The figure is limited to the χ_{QLon} subensemble, as in regions without melt 50% of the simulations ($\chi_{QL} - off$ subensemble) will show a similar mass balance. The overall width of the SMB distribution decreases with altitude. In the lowermost regions in the west and southeast (1,4) there is a trend to more negative mass balances with larger exchange coefficients. Regions 3, 5, 6, 10 and to a lesser extent 2 and 7

Rephrase "the figure is limited to" to "Only ... "is shown in Figure 7 because..."

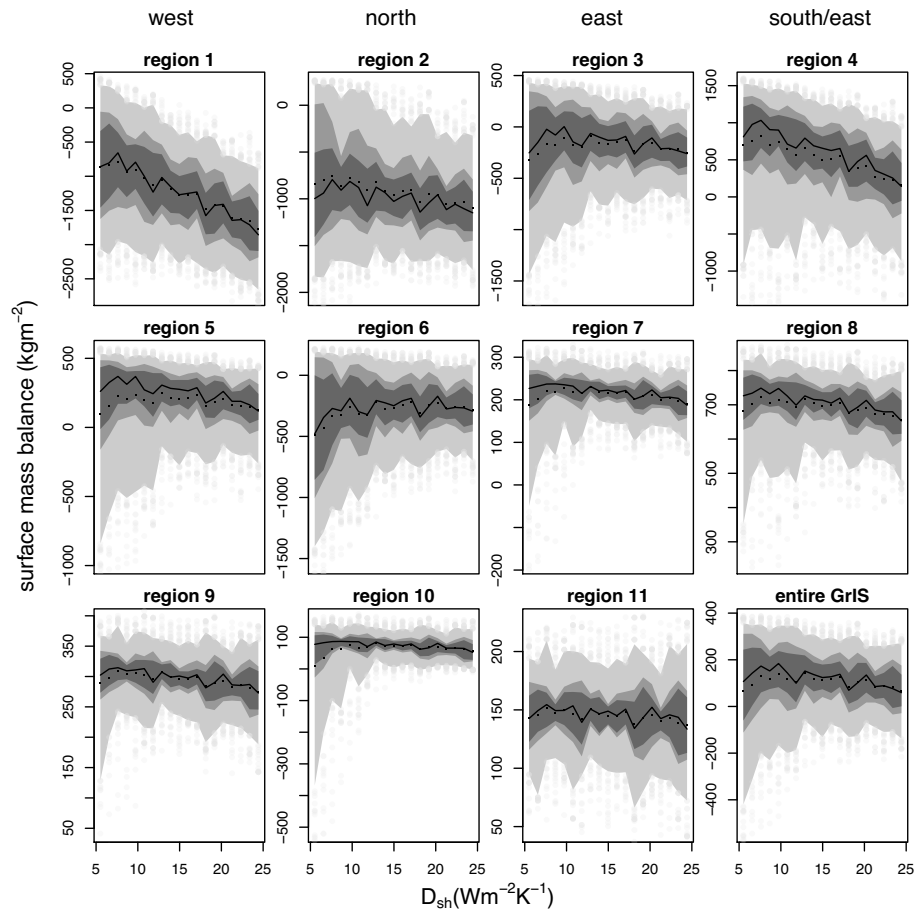


Figure 7. The dependency of the SMB on the turbulent heat exchange coefficient D_{SH} is displayed in a similar matter as Figure 7. The shading represents the different quantiles: 5/95 (light grey), 25/75 (grey), 33/66 (dark) and the median (solid black line). The black dots are the ensemble mean based on 20 intervals. The panels are sorted by elevation and regions, with the lowest elevation (0-1000 m) in the top row, and the highest elevation at the bottom. Each column is related to a region in Greenland: W-N-E-SE/S



show a distinct decrease in surface mass balance spread of the ensemble with increasing D_{SH} and slight decrease of the mean (excluding region 6). The smallest spread of the ensemble is found in the high altitude-regions 9, 10, 11. The general slightly negative trend for the SMB with D_{SH} is a result of higher air-temperatures than snow surface temperatures. ^{rather} This shows a very strong influence at the lower regions of the west and south, where warm air advection is frequent, resulting in increased melt due to the heat supplied by the sensible heat flux. The regions are also quite moist, in particular the south east (region 4), therefore the latent heat flux during summer is also positive. The north-east (region 2, 3, 6, 7) of Greenland is colder and drier resulting in lower temperature and moisture differences between surface and atmosphere. This reduces the effect that D_{SH} has on the SMB and SEB. The ensemble spread is narrower at higher altitudes (7-11) due to a generally positive mass balance, so an increased energy input due to any parameter will mainly impact the snow temperature, but in the absence of melt the mass balance does not change significantly. Still the change in temperature alters sublimation accounting for the remaining variability. This is pronounced in region 10, at low exchange coefficients melt is still possible, if other parameters result in a strong positive energy input, leading to a skewness towards negative SMB. At a stronger exchange the tight coupling with the heat reservoir of the earth limits melt and the skewness towards negative SMBs vanishes, while the median stays almost constant. The parameter D_{SH} is not the main driver for the SMB in this region, rather it acts as a buffer of the SMB. At strong turbulent sensible heat exchange the surface temperature will be buffered by the air-temperature heat reservoir. This effect is visible for most of the regions, with air-temperatures most of the year below the melting point (2,3, 5, 7-10).

The earlier discussion mainly focused on the impact of D_{SH} on the surface mass balance via the turbulent sensible heat flux Q_{SH} , but it also impacts the turbulent latent heat flux (eq. 12). In a similar manner to Figure 7 the turbulent latent heat flux alone was analyzed, but is not shown here. Q_L gets more negative with increasing exchange coefficient. There are two effects present, the increased surface water vapor pressure due to higher surface temperature as result of Q_{SH} and the actual water vapor exchange rate. The annual average of the ensemble over Greenland is a negative turbulent latent heat flux, meaning sublimation occurs more often than condensation. $r_{lh/sh}$ does increase Q_L in its absolute value and therefore leads to more sublimation, but the effect on the mean is also lower than on the whole ensemble. At larger exchange rates more mass can be moved and therefore the variation over the ensemble increases as larger surface temperatures are prevailing.

The average SMB increases at low elevation if $\chi_{QL} - on$, and decreases above 2000 m and is almost constant above 3000 m, where the annual average of the latent heat flux is almost zero. The first is a result of reduced melt due to a negative latent heat flux (sublimation), and it is therefore most pronounced in the north-east. The latter is a region where melt only occurs for a couple of extreme ensemble members, so the sublimation is the only mass loss and therefore the SMB decreases. The other parameters show analogous behavior to the GSA: An increase in ϵ_{atm} decreases the SMB. The effect is not purely linear, rather increasingly more melt in case of a high emissivity. This is mainly related to the all year around impact of this parameter altering ice exposure and albedo decay. The snow albedos increase the SMB, with the fresh snow albedo being more important. The SMB ensemble plots do not show any dependency on ice albedo, liquid water content and the mean is also unaffected by $r_{lh/sh}$.

During the LGM the general features are similar. Larger values of D_{SH} reduce the variability/impact of the other parameters, and result in slightly lower SMB. Similar to the GSA a shift to lower elevations is occurring. The impact of D_{SH} on the SMB



is negligible above 2500 instead of above 3000 m and melt tails are limited to below 2000 m. ϵ_{atm} has less influence during the colder period, as well as the snow related parameters.

Additionally, the sensitivity of the 10 m firn temperature was assessed. This was limited to locations where actual firn cores have been taken (Born et al., 2019). The firn temperature at these mostly central locations is sensitive to three parameters: ϵ_{atm} , α_{fs} and D_{SH} . The first two have a rather linear impact with increasing temperature with increasing emissivity and decreasing albedo. The turbulent heat exchange coefficient has a similar effect on the 10 m firn temperature as on the SMB in region 5. At small D_{SH} the 10 m temperature has a larger variability depending on the other two sensitive parameters, while at large values the air-temperature buffers the snow temperature. The sensitive parameters are the main drives of the SEB, which determines the 10 m temperature, in those areas as discussed previously for the SMB. The only difference to regions at higher elevation of the SMB is the insignificance of χ_{QL} . The turbulent latent heat flux has only a minor importance for the SEB, but in the absence of melt it is a requirement for SMB changes. These findings highlight, that by tuning the model for the 10 m firn temperature only information about the sensitive parameters could be extracted.

4 Discussion E.g.: “In this study we asses model sensitivities due to parametric uncertainties.”

The model sensitivity in this study is evaluated based on parameter uncertainties. Cloud cover and the associated atmospheric radiation are big uncertainties in the climate state. This is represented by the large parameter uncertainty of the atmospheric emissivity ϵ_{atm} . The SMB is most sensitive to this parameter under PD conditions. The sensitivity of the SMB is not drastically different during the LGM, but lower atmospheric temperatures reduce the impact of Q_{LWin} and ϵ_{atm} , while also leading to fewer areas where melt and runoff occurs. The relative contribution of the turbulent latent heat flux to the SMB increases drastically during the LGM (4 to 15 % of the total mass flux), making it the model’s most sensitive parameter in large parts of the ice-sheet. This is due to the absence of melt, similar to the highest elevations during PD climate. Additionally, SMB values have a smaller magnitude, as precipitation is less during the LGM and therefore the relative contribution of the vapor fluxes to the SMB is larger. For an accurate modeling of the SMB over the glacial cycle an inclusion of the turbulent latent heat flux is necessary, which may not be as important for a warmer climate.

The sensitivity reported is the result of two components: the absolute strength of a particular flux and the parameter uncertainty range of the parameter. The incoming long-wave radiation is the largest single energy source for the surface during PD, ranging from twice the incoming solar radiation around the margin to about 1/3 in the interior. The impact of the atmospheric emissivity is decreasing from the coast inwards for multiple reasons: First, X temperatures are higher around the margin leading to increased incoming thermal radiation. Second, X cloud cover is larger and therefore solar radiation is reduced. Last X, at negative SMB the rate of melting depends greatly on the total energy flux and albedo decays faster at a warmer snowpack/ice if more long-wave radiation reaches the surface during winter. It is important to differentiate between the sensitivity of the Greenland wide integrated mass balance and the local SMB, as well as the impact of the individual fluxes on the absolute SMB.



The Greenland-wide mass balance is most sensitive to the atmospheric emissivity during PD (fig. 2), while during the LGM the SMB shows increased sensitivity to the fresh snow albedo, the choice of albedo parametrization, and the turbulent latent heat flux. This is a result of lower atmospheric temperatures and an ice sheet with less melt, increasing the importance of the vapor fluxes similar at high elevations at PD. While it would be acceptable for the integrated SMB to not include Q_L in a warm

5 climate using this model, it is not during a colder and dryer climate state. Additionally, this means that although cloud cover uncertainty may be similar during the colder period of the LGM the sensitivity of this model towards this uncertainty is lower.

At the local scale even in PD climate the vapor flux (Q_L) is up to 1/3 of the total SMB, despite its small impact on the Greenland wide integrated scale. Additionally, in the absence of melt the sublimation and condensation are the only changes to the SMB with a fixed precipitation forcing. Neglecting these processes will result in fundamental biases over long-term
10 simulations of the Greenland ice sheet, in particular in its interior. This needs to be considered when tuning surface mass balance models for long time scales. A tuning for the Greenland wide SMB will mainly constrain the most sensitive parameters, which constrain certain key regions of high mass turnover, but not for the bulk surface. Furthermore, the temporal change of the sensitivities on the local scale indicates that models of reduced complexity may fail drastically for other time periods (absence of Q_L for example).

15 The sensitivity in this study is not defined relative to the absolute flux, it does not tell us that it is most sensitive to the long-wave radiation, but rather that the uncertainty of the long-wave radiation has a larger impact on the SMB than the uncertainty in the incoming solar radiation on the SMB uncertainty. The impact each energy flux has on the absolute SMB has to be analysed separately. The long-wave radiation dominates, followed by the solar radiation. The increased sensitivity of the χ_{QL} switch during the LGM is mainly due to its increase on the absolute SMB. In the absence of melt, and with reduced precipitation
20 sublimation accounts for a larger portion of the absolute SMB.

It is beyond the scope of this model to resolve all the physical processes. We use a simple parametrization for the incoming long-wave radiation which does not accurately represent reality. The atmospheric emissivity is neither constant in space nor time. Area distributed values may work during the observational period, but changes in the atmospheric circulation may change these patterns over the glacial cycle. We conclude that the overall model uncertainty can effectively be improved by changing
25 the simplified representation of the long-wave radiation flux as a function of atmospheric temperature and emissivity for either a more sophisticated parameterization or to use long-wave radiation as climate model input. If the model is to be tuned for the Greenland-wide SMB it will be biased towards the melt regions around the margin and therefore the atmospheric emissivity. Where possible parameters should be calibrated via quantities which they strongly depends on be assumed constant in space, as albedo for example depends very much on impurities and snow temperature, but unless the
30 uncertainty of the incoming long-wave radiation is reduced, it is justifiable to work with optimized values from PD. The found model sensitivity towards the parameters is to be set into context with the assumed forcing (climate) uncertainty.

✗ Rephrase to make clear that you mean models that calculate SMB don't need to include Q_L



5 Conclusions

The surface mass and energy balance model BESSI has been improved by accounting for turbulent latent heat flux and snow aging. The sensitivity of the model towards these changes and other uncertain parameters was assessed with a variance based sensitivity method based on two ensembles with a total of 16500 simulations. Warm present day climate and the cold last glacial maximum were used to study the change of the model response under different boundary conditions. The sensitivity analysis reveals that the inclusion of the turbulent latent heat flux is a necessity to simulate the local SMB and the integrated SMB over the entire Greenland ice sheet. The relative importance of sublimation and condensation is larger in the dry and cold climate of the LGM, as air temperature and precipitation is lower.

The uncertainty associated with cloud cover and atmospheric emissivity creates a SMB model uncertainty. With the change in circulation during the last glacial a changing energy input from the atmosphere to the surface will result in a SMB response. Simple surface mass balance models like enhanced temperature index models are likely to create a bias as solar insolation changes are accounted for while the impact of the cloud cover on other components of the energy balance are neglected or implicitly included in the PDD factor, this is even more true as even under PD conditions the impact of clouds on the SMB is highly variable (Van Tricht et al., 2016; Hofer et al., 2017). The sensitivity study further reveals that the uncertainty of the SMB as a result of the atmospheric radiation decreases in colder climate.

The current model version does not use wind fields, although this impacts the SEB via the turbulent fluxes. The strength of the turbulent exchange does not have a big impact on the SMB and the approach to neglect wind speed variability is therefore justified in the context of more uncertain parameters.

We find that uncertainties in the ice albedo, liquid water content and differences of the turbulent fluxes are of minor importance for our and likely also similar models. In order to reduce model uncertainty most effectively, first the larger energy sources of short wave and long wave radiation need to be constrained via the snow albedo and the atmospheric emissivity.

Code availability. The BESSI model code is available on git-hub (<https://github.com/TobiasZo/BESSI/tree/TobiasZo---GSA-model-version>). Additionally, the github branch also contains the analysis and plotting scripts. Upon acceptance the branch will be archived via zenodo.

Author contributions. TZ implemented the model changes, conducted the ensemble simulations, the sensitivity studies and the data analysis and wrote the main part of the manuscript. AB contributed to all aspects of this study.

Competing interests. The authors declare that they have no conflict of interest.



References

- Amante, C. and Eakins, B.: ETOPO1 1 Arc-Minute Global Relief Model: Procedures, Data Sources and Analysis, <https://doi.org/doi:10.7289/V5C8276M>, <https://data.nodc.noaa.gov/cgi-bin/iso?id=gov.noaa.ngdc.mgg.dem:316>, 2009.
- Aoki, T., Hachikubo, A., and Mashiro, H.: Effects of snow physical parameters on shortwave broadband albedos, *Journal of Geophysical Research*, 108, 1–12, <https://doi.org/10.1029/2003JD003506>, 2003.
- Aschwanden, A., Fahnestock, M. A., Truffer, M., Brinkerhoff, D. J., Hock, R., Khroulev, C., Mottram, R., and Khan, S. A.: Contribution of the Greenland Ice Sheet to sea-level over the next millennium, *Science Advances*, <https://doi.org/10.1126/sciadv.aav9396>, 2019.
- Beven, K.: Changing ideas in hydrology - The case of physically-based models, *Journal of Hydrology*, 105, 157–172, [https://doi.org/10.1016/0022-1694\(89\)90101-7](https://doi.org/10.1016/0022-1694(89)90101-7), 1989.
- Born, A., Imhof, M. A., and Stocker, T. F.: An efficient surface energy–mass balance model for snow and ice, *The Cryosphere*, 13, 1529–1546, <https://doi.org/10.5194/tc-13-1529-2019>, 2019.
- Bougamont, M., Bamber, J. L., and Greuell, W.: A surface mass balance model for the Greenland Ice Sheet, *Journal of Geophysical Research: Earth Surface*, 110, 1–13, <https://doi.org/10.1029/2005JF000348>, 2005.
- Box, J. E. and Steffen, K.: Sublimation on the Greenland ice sheet from automated station observations, *Journal of Geophysical Research*, 106, 965–981, <https://doi.org/10.1029/2001JD900219>, 2001.
- Box, J. E., Bromwich, D. H., and Bai, L. S.: Greenland ice sheet surface mass balance 1991–2000: Application of Polar MM5 mesoscale model and in situ data, *Journal of Geophysical Research D: Atmospheres*, 109, 1–21, <https://doi.org/10.1029/2003JD004451>, 2004.
- Brady, E. C., Otto-Bliesner, B. L., Kay, J. E., and Rosenbloom, N.: Sensitivity to glacial forcing in the CCSM4, *Journal of Climate*, 26, 1901–1925, <https://doi.org/10.1175/JCLI-D-11-00416.1>, 2013.
- Braithwaite, R. J.: Calculation of sensible-heat flux over a melting ice surface using simple climate data and daily measurements of ablation, *Annals of Glaciology*, 50, 9–15, <https://doi.org/10.3189/172756409787769726>, 2009.
- Busetto, M., Lanconelli, C., Mazzola, M., Lupi, A., Petkov, B., Vitale, V., Tomasi, C., Grigioni, P., and Pellegrini, A.: Parameterization of clear sky effective emissivity under surface-based temperature inversion at Dome C and South Pole, Antarctica, *Antarctic Science*, 25, 697–710, <https://doi.org/10.1017/S0954102013000096>, 2013.
- Cullen, N. J., Mölg, T., Conway, J. P., and Steffen, K.: Assessing the role of sublimation in the dry snow zone of the Greenland ice sheet in a warming world, *Journal of Geophysical Research: Atmospheres*, pp. 1–15, <https://doi.org/10.1002/2014JD021557>, 2014.
- Fettweis, X.: Reconstruction of the 1979–2006 Greenland ice sheet surface mass balance using the regional climate model MAR, *The Cryosphere*, 1, 21–40, <https://doi.org/10.5194/tc-1-21-2007>, 2007.
- Gallet, J., Domine, F., Savarino, J., Dumont, M., and Brun, E.: The growth of sublimation crystals and surface hoar on the Antarctic plateau, *The Cryosphere*, 8, 1205–1215, <https://doi.org/10.5194/tc-8-1205-2014>, 2014.
- Greuell, W. and Konzelmann, T.: Numerical modelling of the energy balance and the englacial temperature of the Greenland Ice Sheet. Calculations for the ETH-Camp location (West Greenland, 1155 m a.s.l.), *Global and Planetary Change*, 9, 91–114, [https://doi.org/10.1016/0921-8181\(94\)90010-8](https://doi.org/10.1016/0921-8181(94)90010-8), 1994.
- Greuell, W. and Smeets, P.: Variations with elevation in the surface energy balance on the Pasterze (Austria), *Journal of Geophysical Research*, 106, 31 717, <https://doi.org/10.1029/2001JD900127>, 2001.
- Hofer, S., Tedstone, A. J., Fettweis, X., and Bamber, J. L.: Decreasing cloud cover drives the recent mass loss on the Greenland Ice Sheet, *Science Advances*, 3, e1700 584, <https://doi.org/10.1126/sciadv.1700584>, 2017.



- Klok, E. J. and Oerlemans, J.: Modelled climate sensitivity of the mass balance of Morteratschgletscher and its dependence on albedo parameterization, *International Journal of Climatology*, 24, 231–245, <https://doi.org/10.1002/joc.994>, 2004.
- Krapp, M., Robinson, A., and Ganopolski, A.: SEMIC: an efficient surface energy and mass balance model applied to the Greenland ice sheet, *The Cryosphere*, 11, 1519–1535, <https://doi.org/10.5194/tc-11-1519-2017>, 2017.
- 5 Krebs-Kanzow, U., Gierz, P., and Lohmann, G.: Brief communication: An ice surface melt scheme including the diurnal cycle of solar radiation, *The Cryosphere*, 12, 3923–3930, <https://doi.org/10.5194/tc-12-3923-2018>, 2018.
- Lehning, M., Bartelt, P., Brown, B., and Fierz, C.: A physical SNOWPACK model for the Swiss avalanche warning: Part III: Meteorological forcing, thin layer formation and evaluation, *Cold Regions Science and Technology*, 35, 169–184, [https://doi.org/10.1016/S0165-232X\(02\)00072-1](https://doi.org/10.1016/S0165-232X(02)00072-1), 2002.
- 10 Liston, G. E. and Elder, K.: A Meteorological Distribution System for High-Resolution Terrestrial Modeling (MicroMet), *Journal of Hydrometeorology*, 7, 217–234, <https://doi.org/10.1175/JHM486.1>, 2006.
- Noël, B., Van De Berg, W., Van Wessem, J., Van Meijgaard, E., Van As, D., Lenaerts, J. T. M., Lhermitte, S., Munneke, P., Smeets, C., Van Uft, L., Van De Wal, R., and Van Den Broeke, M.: Modelling the climate and surface mass balance of polar ice sheets using RACMO2 - Part 1: Greenland (1958-2016), *Cryosphere*, 12, 811–831, <https://doi.org/10.5194/tc-12-811-2018>, 2018.
- 15 Oerlemans, J. and Knapp, W. H.: A 1-year record of global radiation and albedo in the ablation zone of Marteratschgletscher, Switzerland, *Journal of Glaciology*, 44, 231–238, <https://doi.org/10.3189/S0022143000002574>, 1998.
- Ohmura, A.: Physical Basis for the Temperature-Based Melt-Index Method, *Journal of Applied Meteorology*, 40, 753–761, [https://doi.org/10.1175/1520-0450\(2001\)040<0753:PBFTTB>2.0.CO;2](https://doi.org/10.1175/1520-0450(2001)040<0753:PBFTTB>2.0.CO;2), 2001.
- Peltier, W., Argus, D., and Drummond, R.: Space geodesy constrains ice-age terminal deglaciation: The global ICE-6G_C (VM5a) model., *J. Geophys. Res. Solid Earth*, pp. 450–487, <https://doi.org/doi:10.1002/2014JB011176>, <http://www.atmos.physics.utoronto.ca/~peltier/data.php>, 2015.
- 20 Plach, A., Nisancioglu, K. H., Langebroek, P. M., Born, A., and Le clec’h, S.: Eemian Greenland ice sheet simulated with a higher-order model shows strong sensitivity to surface mass balance forcing, *The Cryosphere*, 13, 2133–2148, <https://doi.org/10.5194/tc-13-2133-2019>, <https://www.the-cryosphere.net/13/2133/2019/>, 2019.
- 25 Robinson, A., Calov, R., and Ganopolski, A.: Greenland ice sheet model parameters constrained using simulations of the Eemian Interglacial, *Climate of the Past*, 7, 381–396, <https://doi.org/10.5194/cp-7-381-2011>, 2011.
- Rolstad, C. and Oerlemans, J.: The residual method for determination of the turbulent exchange coefficient applied to automatic weather station data from Iceland, Switzerland and West Greenland, *Annals of Glaciology*, 42, 367–372, <https://doi.org/10.3189/172756405781813041>, 2005.
- 30 Saltelli, A., Campolongo, F., and Tarantola, S.: Sensitivity Anaysis as an Ingredient of Modeling, *Statistical Science*, 15, 377–395, <https://doi.org/10.1214/ss/1009213004>, 2000.
- Saltelli, A., Ratto, M., Tarantola, S., and Campolongo, F.: Sensitivity analysis practices: Strategies for model-based inference, *Reliability Engineering and System Safety*, 91, 1109–1125, <https://doi.org/10.1016/j.res.2005.11.014>, 2006.
- Saltelli, A., Annoni, P., Azzini, I., Campolongo, F., Ratto, M., and Tarantola, S.: Variance based sensitivity analysis of model output. Design and estimator for the total sensitivity index, *Computer Physics Communications*, 181, 259–270, <https://doi.org/10.1016/j.cpc.2009.09.018>, 2010.
- 35 Sauter, T. and Obleitner, F.: Assessment of the uncertainty of snowpack simulations based on variance decomposition, *Geoscientific Model Development*, 8, 3911–3928, <https://doi.org/10.5194/gmd-8-3911-2015>, 2015.



- Sobol, I., Tarantola, S., Gatelli, D., Kucherenko, S., and Mauntz, W.: Estimating the approximation error when fixing unessential factors in global sensitivity analysis, *Reliability Engineering & System Safety*, 92, 957 – 960, <https://doi.org/10.1016/j.ress.2006.07.001>, 2007.
- Uppala, S. M., Healy, S. B., Balmaseda, M. A., de Rosnay, P., Isaksen, L., van de Berg, L., Geer, A. J., McNally, A. P., Matricardi, M., Haimberger, L., Dee, D. P., Dragani, R., Bormann, N., Hersbach, H., Vitart, F., Kobayashi, S., Andrae, U., Beljaars, A. C. M., Poli, P., Monge-Sanz, B. M., Peubey, C., Thépaut, J.-N., Delsol, C., Hólm, E. V., Simmons, A. J., Köhler, M., Bechtold, P., Berrisford, P., Balsamo, G., Park, B.-K., Fuentes, M., Bidlot, J., Bauer, P., Tavolato, C., Kållberg, P., and Morcrette, J.-J.: The ERA-Interim reanalysis: configuration and performance of the data assimilation system, *Quarterly Journal of the Royal Meteorological Society*, 137, 553–597, <https://doi.org/10.1002/qj.828>, 2011.
- van de Berg, W. J., van den Broeke, M., Ettema, J., van Meijgaard, E., and Kaspar, F.: Significant contribution of insolation to Eemian melting of the Greenland ice sheet, *Nature Geoscience*, 4, 679–683, <https://doi.org/10.1038/ngeo1245>, <http://www.nature.com/doifinder/10.1038/ngeo1245>, 2011.
- Van Den Broeke, M., Smeets, P., Ettema, J., Van Der Veen, C., Van De Wal, R., and Oerlemans, J.: Partitioning of melt energy and meltwater fluxes in the ablation zone of the west Greenland ice sheet, *Cryosphere*, 2, 179–189, <https://doi.org/10.5194/tc-2-179-2008>, 2008.
- Van Tricht, K., Lhermitte, S., Lenaerts, J. T., Gorodetskaya, I. V., L'Ecuyer, T. S., Noël, B., van den Broeke, M. R., Turner, D. D., and van Lipzig, N. P.: Clouds enhance Greenland ice sheet meltwater runoff, *Nature Communications*, 7, 10 266, [10.1038/ncomms10266](https://doi.org/10.1038/ncomms10266), 2016.
- Van Wessem, M., Van De Berg, W., Noël, B. P., Van Meijgaard, E., Amory, C., Birnbaum, G., Jakobs, C. L., Krüger, K., Lenaerts, J. T., Lhermitte, S., Ligtenberg, S. R., Medley, B., Reijmer, C. H., Van Tricht, K., Trusel, L. D., Van Uft, L. H., Wouters, B., Wuite, J., and Van Den Broeke, M. R.: Modelling the climate and surface mass balance of polar ice sheets using RACMO2 - Part 2: Antarctica (1979-2016), *Cryosphere*, 12, 1479–1498, <https://doi.org/10.5194/tc-12-1479-2018>, 2018.
- Zemp, M., Huss, M., Thibert, E., Eckert, N., McNabb, R., Huber, J., Barandun, M., Machguth, H., Nussbaumer, S., Gärtner-Roer, I., et al.: Global glacier mass changes and their contributions to sea-level rise from 1961 to 2016, *Nature*, 568, 382–386, [10.1038/s41586-019-1071-0](https://doi.org/10.1038/s41586-019-1071-0), 2019.
- Zolles, T., Maussion, F., Peter Galos, S., Gurgiser, W., and Nicholson, L.: Robust uncertainty assessment of the spatio-temporal transferability of glacier mass and energy balance models, *Cryosphere*, 13, 469–489, <https://doi.org/10.5194/tc-13-469-2019>, 2019.