

Improving Calibration and Validation of Cosmic-Ray Neutron Sensors in the Light of Spatial Sensitivity—~~Theory and Evidence~~

Martin Schrön^{1,2}, Markus Köhli^{1,3,4}, Lena Scheiffle⁵, Joost Iwema⁶, Heye R. Boga⁷, Ling Lv⁸, Edoardo Martini¹, Gabriele Baroni^{2,5}, Rafael Rosolem^{6,9}, Jannis Weimar³, Juliane Mai^{2,10}, Matthias Cuntz^{2,11}, Corinna Rebmann², Sascha E. Oswald⁵, Peter Dietrich¹, Ulrich Schmidt³, and Steffen Zacharias¹

¹Dep. Monitoring and Exploration Technologies, Helmholtz Centre for Environmental Research - UFZ Leipzig, Germany

²Dep. Computational Hydrosystems, Helmholtz Centre for Environmental Research - UFZ Leipzig, Germany

³Physikalisches Institut, Heidelberg University

⁴Physikalisches Institut, University of Bonn, Germany

⁵Institute of Earth and Environmental Science, University of Potsdam, Germany

⁶Faculty of Engineering, University of Bristol, England

⁷Agrosphere Institute (IBG-3), Forschungszentrum Jülich GmbH, Germany

⁸Department of Plants, Soils and Climate, Utah State University, US

⁹Cabot Institute, University of Bristol, England

¹⁰Department of Civil and Environmental Engineering, University of Waterloo, Canada

¹¹INRA, Université de Lorraine, UMR1137 Ecology et Ecophysiologie Forestière, Champenoux, France

Correspondence to: Martin Schrön (martin.schroen@ufz.de)

Abstract. In the last years the method of cosmic-ray neutron sensing (CRNS) has gained popularity among ~~soil~~-hydrologists, physicists, and land-surface modelers. The sensor provides continuous soil moisture data, averaged over several hectares and tens of decimeters depth. However, the signal still may contain unidentified features of hydrological processes, and many calibration datasets are often required in order to find reliable relations between ~~neutrons~~ neutron intensity and water dynamics.

- 5 Recent insights into environmental neutrons accurately described the spatial sensitivity of the sensor and thus allowed to quantify the contribution of individual sample locations to the CRNS signal. Consequently, data points of calibration and validation datasets are suggested to be averaged using a more physically-based weighting approach. In this work, a revised sensitivity function is used to calculate weighted averages of point data. The function is different from the simple exponential convention by the extraordinary sensitivity to the first few meters around the probe, and by dependencies on air pressure,
- 10 air humidity, soil moisture and vegetation. The approach is extensively tested ~~with two calibration and four at six distinct monitoring sites: two sites with multiple calibration datasets and four sites with continuous~~ time series datasets ~~from a variety of sites and conditions~~. In all cases, the revised averaging method ~~robustly~~-improved the performance of the CRNS ~~product and even~~ products. The revised approach further helped to reveal ~~otherwise~~-hidden hydrological processes which otherwise remained unexplained in the data or were lost in the process of overcalibration. The presented weighting approach increases
- 15 the overall accuracy of CRNS products and will have impact on all their applications in agriculture, hydrology, and modeling.

1 Introduction

Field-scale soil moisture is an important variable to drive and evaluate agricultural, hydrological, and land-surface models (Vereecken et al., 2008; Robinson et al., 2008). Knowledge about soil moisture states at relevant scales would have direct implications for flood risk assessment (Norbiato et al., 2008), real-time estimation of water deficit in agriculture (Smith et al., 2002), or drought forecasting and analysis (Sheffield, 2004; Samaniego et al., 2013; Ceppi et al., 2014; Zink et al., 2016). Consequently, ~~there is the corresponding models raise~~ a huge demand for accurate estimations of root-zone soil moisture at scales from 10 to 10⁴ m.

~~Cosmic-ray neutron sensors~~ Cosmic-Ray Neutron Sensing (CRNS) ~~are is~~ one of the most promising ~~technologies-methods~~ for root-zone soil moisture monitoring at the field scale. These instruments are able to continuously measure soil water content averaged over several hectares and up to half a meter depth (Zreda et al., 2012; Köhli et al., 2015). They are one of the few candidates to close the ~~inconvenient~~ scale gap between point data and remote-sensing products (Robinson et al., 2008; Bogaen et al., 2015).

After the measurement method was first presented by Zreda et al. (2008), many studies were dedicated to calibrate the sensors and to assess the performance in comparison to conventional instruments (e.g., Rivera Villarreyes et al., 2011; Franz et al., 2012a; Coopersmith et al., 2014; Hawdon et al., 2014; Almeida et al., 2014). These studies showed a good agreement between neutron intensity and independent soil moisture observations. However, outstanding features were also reported in the CRNS data which did not fit well to the accepted theory described by Desilets et al. (2010). Authors suggested that additional hydrological processes and hydrogen pools could influence the signal (e.g. Franz et al., 2013a; Baatz et al., 2014; Baroni and Oswald, 2015), while others applied recalibration of semi-physical parameters to better fit individual site conditions (e.g., Rivera Villarreyes et al., 2011; Lv et al., 2014; Iwema et al., 2015; Heidbüchel et al., 2016b). Despite the unambiguous improvements obtained by corrections and realibration approaches, still some features in many datasets could not be explained ~~by the given theory using current knowledge~~ and consequently seemed to be unrelated to hydrological processes.

To address some of these knowledge gaps, Franz et al. (2012b) investigated soil hydrological processes with water transport simulations and found that wetting and drying cycles are non-uniquely represented by the CRNS signal. Due to the integrative neutron signal, those hysteresis effects can be most significant when sharp wetting or drying fronts are shaping the soil water profile. As a consequence, Franz et al. (2012b) and Franz et al. (2013b) recommended vertical weighting of point measurements in the profile to account for these effects. Furthermore, Franz et al. (2013b) also demonstrated that the sensor could underestimate average soil moisture by up to ~~10%vol~~ ten volumetric percent depending on the horizontal distribution of water content in the footprint. They concluded that exact knowledge of the heterogeneity is a prerequisite for the interpretation of neutron count rates, and distance-weighting procedures are necessary to obtain sufficient performance during calibration and validation with point data. In order to average calibration and validation data horizontally, Franz et al. (2012a) adopted a sampling scheme based on initial calculations by Zreda et al. (2008) to give every sample an equal weight. The resulting sensor locations at 25, 75, and 200m correspond to an almost exponential horizontal weighting function. Bogaen et al. (2013) were the first who applied this horizontal weighting to an irregularly distributed point sensor network, albeit indirectly by fitting

the cumulative variant. Nevertheless, many researchers still avoid horizontal weighting by virtually re-locating their irregularly distributed point sensors to the nearest radius of 25, 75, or 200 m in post-processing mode (e.g., Franz et al., 2012a). In complex terrain, only few calibration or validation locations are accessible and their individual contribution to the neutron signal has been unknown for a long time.

5 As the understanding of cosmic-ray neutron physics in the environment has been more and more elaborated, Köhli et al. (2015) developed a dedicated computer model URANOS, which helped to understand the spatial sensitivity of the neutron sensor. These authors revealed that the sensor is extraordinarily sensitive to the nearest few meters, rather than following a simple exponential decrease of sensitivity as was reported by Zreda et al. (2008) and Desilets and Zreda (2013). This revision has since changed the way ~~how~~ CRNS measurements are interpreted. Their findings extensively describe the footprint volume
10 in which soil water content is measured, and can now be used to develop new weighting approaches and to revisit previous data analysis.

~~Heidbüchel et al. (2016a)~~ The revised footprint and spatial sensitivity of the CRNS probe has since been confirmed by many observations. Heidbüchel et al. (2016b) were the first to test the impact of the revised ~~spatial sensitivity~~ function on the performance of their calibration data. ~~Encouraged by~~ Schattan et al. (2017) applied the revised weighting approach to average
15 complex snow patterns in an alpine terrain. Encouraged by both of their promising results, the present study has hypothesized that this new theory could enable an improved performance of CRNS calibration and validation campaigns for a huge variety of sites and conditions. We further hypothesize that the initially published relation between neutrons and water equivalent (Desilets et al., 2010) might be widely applicable without the need to calibrate all of its parameters on site-specific conditions. Eventually, an over-all improvement of the CRNS data could help to identify hydrological effects more accurately (such as
20 precipitation, ponding, evapotranspiration, and infiltration processes).

The paper is structured as follows: Firstly, we present the *equally weighted*, the *conventional*, and the *revised* formulation of the spatial sensitivity function (also called *weighting function*). We then provide a procedure to generate a weighted average of point measurements that can be compared with the CRNS product. The assumptions and uncertainties of this approach are then discussed, followed by a short description of measures used to evaluate the calibration ~~and validation~~ performance, and
25 short descriptions of the studied sites. In the results section we present and discuss the sensor performance using the *equal*, *conventional* and the *revised* weighting approaches for calibration campaigns at two different sites, and for time series data at four sites.

2 Methods

Stationary cosmic-ray neutron sensors (CRNS) are particle detectors that ~~monitor the well-mixed~~ measure the neutron intensity
30 in the ~~air~~ well-mixed pool of neutrons above the land surface (Zreda et al., 2012). Due to the low interaction probability of neutrons with air molecules, the measured particles can travel distances of ~~up to more than~~ 240 m from the soil to the detector (Köhli et al., 2015). The neutron signal is predominantly sensitive to the number of hydrogen atoms in the ~~footprint~~ soil, but it is also influenced by changes of air pressure, air humidity, and incoming cosmic radiation. These additional factors can be

~~excluded-accounted for~~ by standard correction approaches (Hawdon et al., 2014; Schrön et al., 2015), such that the remaining signal ~~only-represents-represents only~~ the hydrogen abundance in the soil and biosphere. To convert the corrected neutron count rate N to gravimetric soil water equivalent, θ , Desilets et al. (2010) suggested the following theoretical relation:

$$\theta(N, N_0) = \frac{0.0808}{N/N_0 - 0.372} - 0.115, \quad \text{(Desilets et al. 2010)} \quad (1)$$

- 5 where N_0 is a site-specific calibration parameter. It is determined once for each dataset by comparing the CRNS product, ~~$\theta(N)$~~ $\theta(N, N_0)$, with the actual soil moisture condition in the field. However, neutrons are sensitive to all kinds of hydrogen in the footprint, hence the variable θ denotes ~~not-only-the water equivalent of~~ soil moisture, θ_{sm} , ~~but-is-rather-assumed-to-also~~ ~~include-and additional hydrogen pools,~~ θ_{offset} . The latter comprises for example lattice water, θ_{lw} (Dong et al., 2014), as well as water equivalent from soil organic carbon, θ_{org} , ~~and~~ (Hawdon et al., 2014), biomass, θ_{bio} , and other dynamic contributors,
- 10 θ_{other} :

$$\theta = \theta_{\text{sm}} + \theta_{\text{lw}} + \theta_{\text{org}} + \theta_{\text{bio}}.$$

$$\theta = \theta_{\text{sm}} + \theta_{\text{offset}}, \quad \text{where} \quad \theta_{\text{offset}} = \theta_{\text{lw}} + \theta_{\text{org}} + \theta_{\text{bio}} + \theta_{\text{other}}. \quad (2)$$

- 15 Quantities related to absolute water equivalent are either given in units of gravimetric percent (θ_g in $\% \equiv 100 \cdot \text{g/g}$) or volumetric percent (θ_v in $\% \equiv 100 \cdot \text{cm}^3/\text{cm}^3$). If no indices v or g are indicated and units are not mentioned in the context, this work uses default units of volumetric percent.

For calibration and validation purposes, the water equivalent in the footprint volume is typically determined independently by an average of point measurements, for example from gravimetric samples or data from soil moisture monitoring networks. However, those locations can contribute differently to the apparent average of soil moisture as seen by the neutron detector, 20 for example, depending on their distance r from the CRNS probe and their depth d below the soil surface. Depending on their individual contributions, different weights can be assigned to each data point in the calculation of a so-called weighted average.

Among the variety of weighting concepts in the literature, we have selected two of the main and most frequently used strategies from recognized publications, which are based on distinct physical assumptions. On the one hand, the *conventional* approach covers the main strategies applied so far (Franz et al., 2012b; Bogen et al., 2013). On the other hand, a *revised* 25 weighting approach has been used which is based on recent findings from Köhli et al. (2015) and which has been further advanced in the present work by the following points:

- extension of the analytical fit of the radial sensitivity function W_r to ~~low-short~~ distances, $r \leq 0.5 \text{ m}$,
- added dependency of the weighting functions on air pressure p and vegetation height H_{veg} , by introducing a rescaled distance $r^*(r, p, H_{\text{veg}}, \theta)$.

The neutron transport model URANOS has been updated accordingly to provide advanced analytical functions for the spatial sensitivity (URANOS 0.97, available from www.ufz.de/uranos). These advancements generalize the applicability of the results from Köhli et al. (2015) and are recommended for future applications. Please refer to Appendix A for detailed explanations. There are certainly more factors that influence the shape of the neutron sensitivity, for example the height of the detector above ground, different plant species, and large objects. However, those factors are irrelevant for the investigated sites and are thus of minor importance for the conclusions in this ~~manuscript and should be investigated in future studies~~ work.

In addition to the *conventional* and the *revised* approach, this work includes the *equal average* weighting strategy (weights equal 1) to compare the performance when the CRNS signal is intuitively treated as a large-area averaging soil moisture product, ~~as was done especially at macroscopically homogeneous sites.~~

2.1 Vertical weighting in the soil profile

Simulations by Zreda et al. (2008), Franz et al. (2012b), and Köhli et al. (2015) have shown that the neutron signal integrated over a vertical soil column exhibits the highest sensitivity to the uppermost layers. Therefore, independent soil moisture measurements taken at different depths, d , need to be weighted differently in order to account for the underlying physical processes. To show the consequences of neglecting this step in post-processing, we have compared the *equal* average of soil samples with alternative weighting approaches.

The *conventional* vertical weighting, W_d^{conv} , is performed using a linear relation from Franz et al. (2012b), which was based on Monte-Carlo simulations from Zreda et al. (2008) and became widely accepted in most previous studies.

$$W_d^{\text{conv}} = \begin{cases} 1 - d/z^* D^{\text{conv}}, & d \leq z^* D^{\text{conv}} \\ 0, & d > z^* D^{\text{conv}} \end{cases} \quad (3)$$

penetration depth: $D^{\text{conv}} \equiv z^*(\theta) = \frac{5.8}{\theta + 0.0829}$, in cm, see Franz et al. (2012b).

The two major shortcomings of this function are (1) that it assumes similar penetration depths of detected neutrons for all distances r from the sensor (see Fig. 1a), and (2) that it neglects any contribution of soil water below a certain cutoff ~~depth~~ z^* penetration depth D^{conv} (see Fig. 1b).

In contrast, the *revised* vertical weighting function, W_d , takes the full soil profile into account (as neutrons do) and considers the fact that the effective depth decreases with increasing distance r from the detector:

$$W_d(r, \theta, p, H_{\text{veg}}) = e^{-2d/D_{86}D}, \quad (4)$$

penetration depth: $D_{86}D \equiv D_{86}(r^*, \theta, \varrho_{\text{bulk}})$, in cm, see Appendix A.

where $D_{86}D$ denotes the effective penetration depth, defined as the depth within which 86 % of neutrons probed the soil (see Köhli et al., 2015). These relations are based on URANOS simulations and follow recent insights about the physics of neutron transport and detection near the soil-atmosphere interface. Based on the formulation from Köhli et al. (2015) the advancements

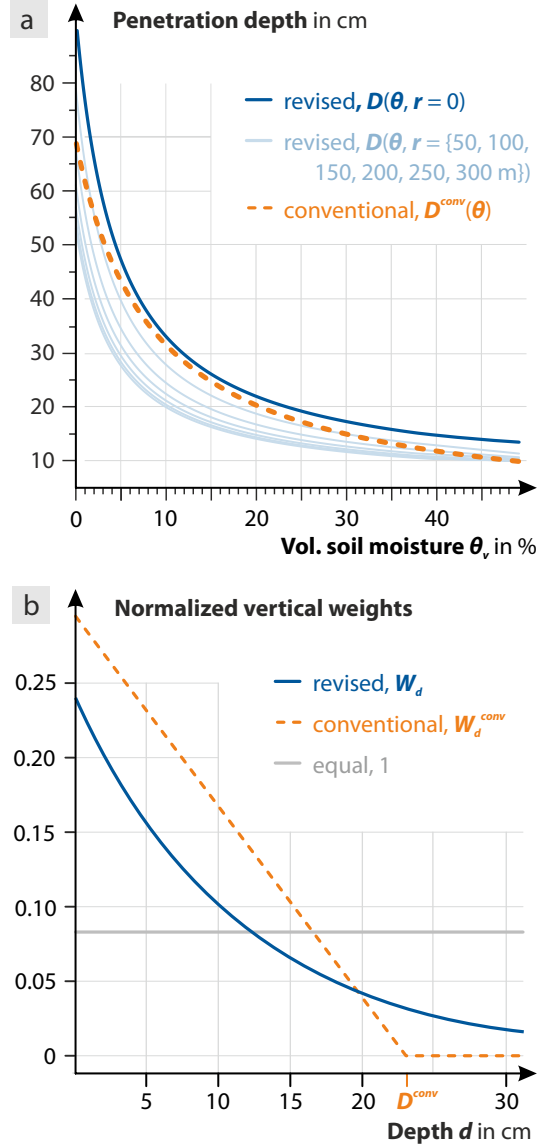


Figure 1. (a) A comparison between the *revised* and the *conventional* penetration depths, $D_{86}(\theta, r, \rho_{\text{bulk}} = 1.4 \text{ g/m}^3)$ $D(\theta, r, \rho_{\text{bulk}} = 1.4 \text{ g/m}^3)$ and $z^*(\theta) D^{\text{conv}}(\theta)$, respectively. On average, both approaches follow an almost similar shape, however the conventional formulation is independent of distance r and soil bulk density ρ_{bulk} . (b) Normalized vertical weighting functions (eqs. 3 and 4) based on 12 sample points. show that the The conventional, linear approach underestimates the relative contribution from shallow water when compared to the revised, exponential function, and neglects contributions from depths beyond $z^* (= 23 D^{\text{conv}} \equiv z^* (= 23 \text{ cm in this example})$.

of the *revised* penetration depth $\textcolor{red}{D}_{86} \textcolor{blue}{D} \equiv D_{86}$ now add the dependency on air pressure and vegetation height, expressed in the scaled distance term r^* (see Appendix A).

2.2 Horizontal weighting in the footprint area

In this work we make use of three horizontal weighting functions to average soil moisture measurements at distances r from the CRNS probe. First, the *equal* average (weights equal 1), which was usually applied for validation with soil moisture networks and remote sensing products. It was also used for calibration datasets if locations were arranged according to the *COSMOS standard sampling scheme*, (25 m, 75 m, 200 m), such that the samples automatically represent areas of equal contribution to the neutron signal. These calculations were based on a simple exponential sensitivity function (Zreda et al., 2008) and presented by Franz et al. (2012a) and Zreda et al. (2012).

Second, the *conventional* weighting approach uses an (almost) exponential sensitivity function based on Monte-Carlo simulations from Zreda et al. (2008). It is implicitly referred to when using the *COSMOS standard sampling scheme* (Zreda et al., 2012). An analytical form of the conventional horizontal weighting function has never been published. However, it can be derived from the cumulative function CFoC(r), presented by Bogaen et al. (2013, eq. 13), who fitted data from Zreda et al. (2008, Fig. 3) in the domain of $r \leq 300$ m:

$$e^{-r/127} \approx W_{r \leq 300}^{\text{conv}} = \partial_r \text{CFoC}(r) \propto 1 - a_1 r + a_2 r^2 - a_3 r^3 + a_4 r^4 \quad (5)$$

where $a_i = \{1.311 \cdot 10^{-2}, 9.423 \cdot 10^{-5}, 3.2 \cdot 10^{-7}, 3.95 \cdot 10^{-10}\}$

To account for the remaining contribution beyond 300 m, the (usually few) data points have been assigned the weight $W_{r > 300}^{\text{conv}} = W_{r=300}^{\text{conv}}$. One of the major shortcomings of this exponential approach is the underestimation of the high sensitivity of the neutron signal to the first few meters around the sensor.

As a third strategy, we use the *revised* weighting approach based on URANOS simulations and corresponding analytical fits (see Köhli et al., 2015, for details). New technical advancements of this function include the dependency on air pressure p and humidity h by introducing the rescaled distance r^* , as well as the extension below $r \leq 0.5$ m.

$$W_r(h, \theta, p, H_{\text{veg}}) = \begin{cases} (F_1 e^{-F_2 r^*} + F_3 e^{-F_4 r^*})(1 - e^{-F_0 r^*}), & 0 \text{ m} < r \leq 1 \text{ m} \\ F_1 e^{-F_2 r^*} + F_3 e^{-F_4 r^*}, & 1 \text{ m} < r \leq 50 \text{ m} \\ F_5 e^{-F_6 r^*} + F_7 e^{-F_8 r^*}, & 50 \text{ m} < r < 600 \text{ m} \end{cases} \quad (6)$$

Parameter functions F_i , their corresponding parameters, the formulation of the rescaled distance $r^*(r, p, H_{\text{veg}}, \theta)$, as well as further explanations are given in Appendix A.

2.3 The Weighting Procedure

The following procedure is recommended to generate a weighted average of point measurements that can be compared with the CRNS product (see illustration in Fig. 3). For each experimental site, consider a number of soil profiles P at distances r_P

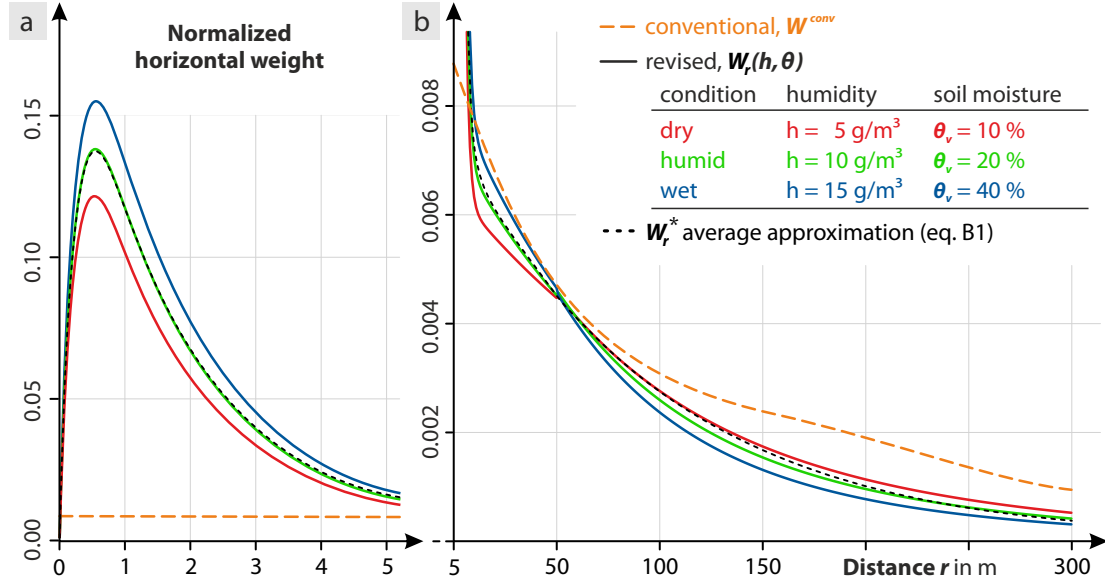


Figure 2. Comparison of normalized horizontal weighting functions (a) from 0 to 5 m, and (b) from 5 to 300 m. Graphs show the conventional (almost exponential) approach W_r^{conv} (eq. 5), the revised curves $W_r(h, \theta)$ for three wetness conditions (eq. 6), and an approximation W_r^* based on a simplified equation Appendix B. The *conventional* approach is insensitive to air and soil water content and highly underestimates the contribution of nearby areas ($r < 10$ m) [when compared to the revised function](#).

from the CRNS probe. In each profile, point measurements of volumetric water equivalent $\theta_{P,L}$ are given at various layers L of depth d_L . Observations of air pressure p , air humidity h , and vegetation height H_{veg} are given at the time of interest, while estimations of soil bulk density ρ_{bulk} exist for every profile (or even every sample). The general function to calculate an average of point measurements i with values θ_i and weights w_i is given as:

$$5 \quad \text{wt}(\theta, w) = \frac{\sum_i w_i \theta_i}{\sum_i w_i}.$$

The procedure to obtain a weighted average of soil water equivalent, $\langle \theta \rangle$, is described as follows ([see also Fig. 3](#)):

1. Estimate an initial value $\langle \theta \rangle = \text{wt}(\theta_{P,L}, 1)$ by an equally weighted average over all profiles P and layers L .
2. Calculate the penetration depth D_P for each profile P :

$$D_P^{\text{conv}} = z^*(\langle \theta \rangle),$$

$$\text{or } D_P = D_{86}(\langle \theta \rangle, r_P^*).$$

3. Vertically average the values $\theta_{P,L}$ over layers L , to obtain a weighted average for each profile P :

$$\theta_P^{\text{conv}} = \text{wt}(\theta_{P,L}, W_{d_L}^{\text{conv}}),$$

$$\text{or } \theta_P = \text{wt}(\theta_{P,L}, W_{d_L}).$$

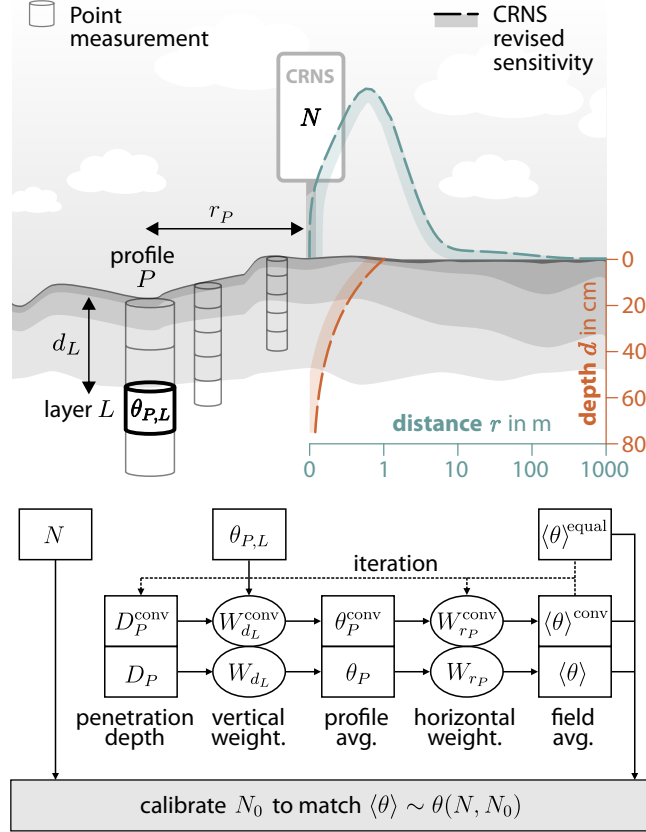


Figure 3. Top: Schematic of the environment around the Cosmic-Ray Neutron Sensor (CRNS) including point measurements (e.g., soil samples) of water equivalent θ to calibrate or validate the sensor. The revised sensitivity functions W_r (teal) and W_d (brown) are indicated (arb. scale). Bottom: The measured variables are used in the weighting procedure (section 2.3), starting with an initial estimate of field-average water content. Three approaches, using the *equal*, the *conventional* (conv), and the *revised* weighting function are compared in this study. The resulting weighted-average water equivalent $\langle\theta\rangle$ is then used to calibrate against or validate with the CRNS product (eq. 1). Calibration of the parameter N_0 is performed towards optimization of four performance measures (see section 2.5).

4. Horizontally average the profiles θ_P :

$$\langle \theta \rangle^{\text{conv}} = \text{wt}(\theta_P^{\text{conv}}, W_{r_P}^{\text{conv}}),$$

or $\langle \theta \rangle = \text{wt}(\theta_P, W_{r_P}(h, \langle \theta \rangle, p, H_{\text{veg}})).$

5. Use the new $\langle \theta \rangle$ to reiterate through steps 1.–5. until values converge within a user-defined accuracy range (e.g., 1%).

The final averaged water equivalent $\langle \theta \rangle$ is then compared with the CRNS product, $\theta(N)$, derived from the neutron count rate N (eq. 1). It is also possible to calculate gravimetric water content using local bulk densities before step 3, however, ~~URANOS calculations of W_r and W_d have been conducted only for this approach is not recommended since the revised weighting functions have been determined by simulations of~~ homogeneous soil and volumetric water content (Köhli et al., 2015). While it has been assumed that N_0 accounts for persistent, non-homogeneous features in the footprint (Zreda et al., 2012), the influence of this state-of-the-art model assumption is to be investigated in future studies.

10 The above procedure weights each data point $\theta_{P,L}$ according to its depth d and distance r from the CRNS probe. However, when a finite number of sample points are chosen, assumptions are involved in the spatial domain they represent. Depending on knowledge about the individual field conditions, interpolation between soil layers, for instance, is a good option to assign each measurement to a certain soil horizon. Let $\Omega(r, \vartheta)$ [m³] be the spatial domain of the footprint volume in polar coordinates, Ω_P [m²] the horizontal representative area of the profile P , and Ω_L [m] the representative soil horizon of the measurement at layer L . As each measurement $\theta_{P,L}$ is representing the volume $\Omega_P \cdot \Omega_L$, its weighted contribution to the neutron signal should be integrated over this domain:

$$\text{Horizontal contribution of profile } P : w_P = \int_{\Omega_P} W_{r_P} = \int_{\Omega_P(r)} \frac{1}{2\pi} \int_{\Omega_P(\vartheta)} W_r \cdot d\vartheta dr,$$

$$\text{Vertical contribution of layer } L : w_L = \int_{\Omega_L} W_{d_L} = \int_{\Omega_L(d)} W_d \cdot dd,$$

For example, if soil samples were taken at two depths, 10 cm and 40 cm for instance, it could be reasonable to integrate their weights from $d = 0$ to 30 cm and from 30 to 50 cm, respectively. In the horizontal space it might be sometimes reasonable to integrate a single profile measurement over the whole area of similar soil and landuse type (as has been done in section 4.4). If sample locations were arranged in an interpolated, regular grid (see e.g., pixels of size 1 m in Fig. 10), then each pixel should be weighted individually as a point such that the integrals above can be simplified. ~~For example in a polar grid with 6 sectors, each sector at distance r is to be weighted with $\int_{\text{sector}} W_r = W_r/2\pi r \cdot (r/6) = W_r/(6\pi)$. In a rectangular grid of grid~~ While an infinitesimal point at distance r has the weight $W_r/(2\pi r)$, a regular pixel of size s , ~~the number of pixels per ring, at that distance weighs $W_r/(2\pi r) \cdot s \propto W_r/r$. For all radially symmetric sampling schemes, where each point measurement represents one of n circular sectors, the sector at distance r is $n(r, s) = r/s$, such that the weight for each pixel is to be $\int_{\text{pixel}} W_r = W_r/(2\pi r) \cdot (r/n) \propto W_r/r$ has the size (arc length) of $2\pi r/n$, and thus contributes the weight $W_r/(2\pi r) \cdot (2\pi r)/n \propto W_r$.~~

~~This~~The strategy, to take into account estimations of representative volumes, initially appears to be more realistic. However, the extrapolation of data points involves assumptions on the site-specific heterogeneity and thereby on the strategy of interpolation. It further requires expert knowledge about the individual field conditions. During the preparation of this work, we found that the usage of weights for distinct measurement points provided fair approximations of the integrals, i.e. $W_{r_P} \approx w_P$ and $W_{d_L} \approx w_L$, and eventually resulted in almost similar averages, $\langle \theta \rangle$, throughout all cases investigated (not shown).

2.4 Uncertainty due to partial coverage

In addition to the considerations about the representative domain, the arrangement of the soil samples can play a crucial role for the CRNS evaluation performance. If the locations of the soil samples (or in-situ monitored soil profiles) do not cover the CRNS footprint representatively, the corresponding data would not be able to explain parts of the neutron signal. Many sites exhibit highly irregular configurations where the soil monitoring network covers only parts of the CRNS footprint. The corresponding uncertainty in the CRNS evaluation can be estimated as follows.

Let S be the domain of the representative volume of the sample locations (e.g., the areal extent of the soil moisture monitoring network), and let Ω be the spatial domain of the CRNS footprint as defined in the previous section. Then, the outer region $\Omega \setminus S$ denotes the part of the footprint domain which is not represented by the samples. The contribution of the “sample area” S to the neutron signal then is:

$$\text{contribution: } N_S/N_\Omega = \int_S W_r / \int_\Omega W_r,$$

which can range from 0 to 100 % and depicts the fraction of detected neutrons which carry information from (i.e., had contact with) the sample area S . Assume that the observed soil moisture in S is on average $\langle \theta \rangle$, and that the soil moisture in the outer region, $\Omega \setminus S$, can be estimated as $\langle \theta \rangle \pm \Delta\theta$. The propagation of this error through $W_r(h, \theta)$ leads to an uncertainty ΔN of the total neutron signal N ,

$$N \pm \Delta N = \int_\Omega W_r \approx \int_S W_r(h, \langle \theta \rangle) + \int_{\Omega \setminus S} W_r(h, \langle \theta \rangle \pm \Delta\theta),$$

and eventually adds uncertainty to the CRNS product, $\theta(N \pm \Delta N)$. In this manuscript, this estimation is applied exemplarily to the *Schärfertal* site (section 4.2) in order to quantify the errors introduced by ~~non-ideal~~incomplete coverage.

2.5 Performance Measures

To evaluate the performance of time series and calibration data, we apply prominent measures used in environmental and hydrological research. The robustness of this approach is evaluated by applying different performance measures, which is a common strategy to falsify new methodological approaches (see e.g., Glaser et al., 2016). Popular efficiency measures are the *Nash-Sutcliffe-Efficiency* (NSE) (Nash and Sutcliffe, 1970) and the more modern *Kling-Gupta-Efficiency* (KGE) (Gupta et al., 2009), while the *Root-Mean-Square-Error* (RMSE) and the *Pearson correlation* coefficient (ρ) are well-established standard

approaches.

$$\text{NSE} = 1 - \frac{\sum(A - B)^2}{\sum(B - \langle B \rangle)^2}$$

$$\text{KGE} = 1 - \left[\left(\rho(A, B) - 1 \right)^2 + \left(\frac{\sigma_A}{\sigma_B} - 1 \right)^2 + \left(\frac{\langle A \rangle}{\langle B \rangle} - 1 \right)^2 \right]^{\frac{1}{2}}$$

$$\text{RMSE} = \langle (A - B)^2 \rangle^{\frac{1}{2}}$$

$$\rho = \frac{\langle (A - \langle A \rangle)(B - \langle B \rangle) \rangle}{\sigma_A \sigma_B}$$

where $A = \theta(N, N_0)$ denotes the water equivalent measured by the CRNS (N_0 needs to be calibrated), B denotes the actual field soil water equivalent, θ , measured by independent instruments, and $\langle x \rangle = \frac{1}{n} \sum_1^n x$ denotes the average (expected value) of a set of data points x . In the ideal case of optimal agreement between the variables A and B , the measures would reach $\text{NSE} = 1$, $\text{KGE} = 1$, $\text{RMSE} = 0$, and $\rho = 1$.

NSE normalizes the mean squared error by the observed variance, where the mean observed variable $\langle B \rangle$ is used as a baseline. Following this approach, site-specific variations could translate to biased estimation of model skills among different sites. On the other hand, the KGE measure is a revised version of NSE that allows to analyze the relative importance of linear correlation ρ , variability σ , and bias $\langle \cdot \rangle$ of simulated and observed variables (Gupta et al., 2009). RMSE is simply a measure of the differences between two time series but is prone to biased datasets and outliers. The correlation ρ is an accepted approach in experimental geophysics to identify similar or unknown effects (e.g., Fu et al., 2015) in two time series. However, if many factors could explain a single observation, only using the correlation measure may lead to false recognition of coincidental effects.

The KGE is the most appropriate performance measure for time series data as it combines three distinct measures to optimally account for absolute errors and anomalies (~~compare also Heidbüchel et al., 2016a~~) ([compare also Heidbüchel et al., 2016b](#)). In the following analysis, we have thus optimized the KGE value between the CRNS and the independent soil moisture data to find a single calibration parameter N_0 per site.

3 Study sites

In order to provide a robust falsification of a potential benefit when using the revised weighted-averaging approach, datasets of six distinct sites have been consulted that offer comparison of the CRNS with independent soil moisture data under various climatic conditions (Fig. 4). At sites 1–2 the CRNS product is calibrated on datasets from so-called *calibration campaigns*. The term typically refers to one or more days on which soil samples were taken in the field and then analyzed for soil water content in the lab. Sites 3–6 provide *time series* data from soil moisture monitoring networks (e.g., SoilNet, see also Boga et al. (2010)). These datasets are usually applied to validate the performance of CRNS sensors, however, the present study takes advantage of the continuous recordings in order to calibrate the CRNS probe. Table 1 provides an overview of the site characteristics.

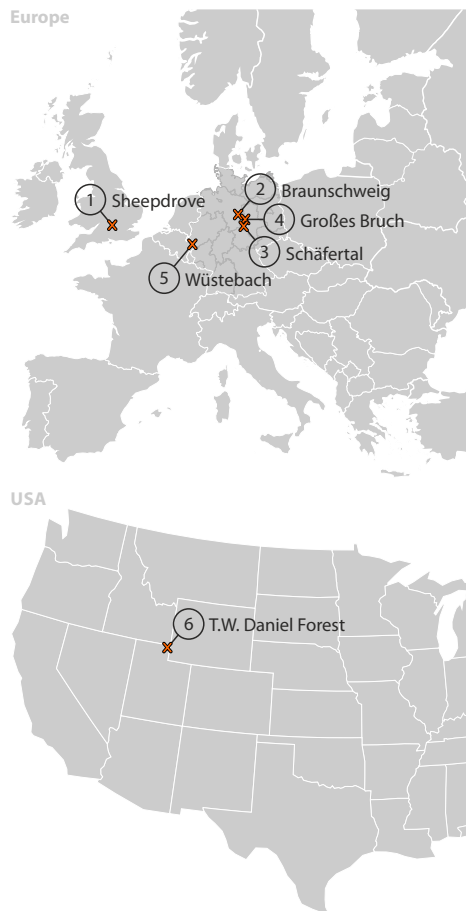


Figure 4. Selection of six distinct observation sites, five across Europe, and one in Utah/US.

The Sheepdrove Organic Farm in Lambourn (UK). The *Sheepdrove Organic Farm* is located at ([51.528175](#), [-1.467311](#) [51.528175°N](#), [-1.467311°E](#), 190 m asl) in the Lambourn catchment in South England. This region is characterized by a temperate climate with yearly average precipitation of 815 mm, evenly distributed over the year, and with a mean daily maximum temperature of 14°C. The CRNS probe is located at a grass stripe which exhibits unmanaged soil and vegetation cover. The surrounding field is grazed by sheep during several variable periods throughout the year. During periods of sheep grazing and after harvest the height of the grass outside the strip is a few decimeters lower than within the strip. The soil is loamy clay with many flints and pieces of chalk. Weathered chalk starts at about 25 centimeters depth. The groundwater is tens of meters below the surface (Evans et al., 2016).

Agricultural site in the lowlands of Braunschweig (GER). The second calibration site is an irrigated agricultural field in the northern lowland of Germany near Braunschweig, at an elevation of 60 m asl. Annual precipitation is 620 mm and average temperature 9.2°C. The 12 ha area is irrigated in 50 m wide strips with pre-treated waste water, as the sandy soils exhibit low water and nutrient holding capacity. The CRNS probe was located in the center of the field (52.3587°N, 10.4004°E) and several

FDR devices provided point measurements of soil moisture. In 2014 the field was cropped with maize (*Zea mays*), that was drilled in mid-April harvested on September, 27th.

The hillslopes and creek in the Schäfertal (GER). The intensive monitoring site *Schäfertal* (11°03' E, 51°39' N, 395 m asl) is an agriculturally used catchment in the middle-mountain area of the Harz mountains in Central Germany (Zacharias et al., 2011; Wollschläger et al., 2016). Parts of the hillslope grassland transect is equipped with a wireless soil moisture monitoring network. It has a spatial extent of ca. 240 x 40 m and comprises a North- and a South-exposed slope as well as a valley bottom crossed by a creek oriented West to East. Silty-loam Cambisols occupy the slopes whilst finer-textured and highly organic soils evolved in the riparian zone between the footslope and the creek (Martini et al., 2015).

The ponded flood plains at Grosses Bruch (GER). The research site *Grosses Bruch* is a mesophilic grassland used as meadow, within a nature protection area surrounding the water channel Grosser Graben (~~52.029728°N, 11.104678°E~~ 52.029728°N, 11.104678°E, 78 m asl) (Wollschläger et al., 2016). The grassland is usually flooded naturally once or twice a year. Soil type in the grassland is a sandy-loamy fluvisol-Gleysol, partly covered with a peat layer up to 1.5m depth. Eddy covariance measurements of energy, water, carbon dioxide as well as methane are conducted at the site. Meteorological conditions as well as spatially distributed soil moisture and soil temperature in several depths are observed continuously with a wireless soil moisture monitoring network.

The forested Wüstebach catchment (GER). The Wüstebach test site is located in the German low mountain ranges within the borders of the Eifel National Park (50°30' N, 6°19' E) and is part of the TERENO Eifel/Lower Rhine Valley Observatory (Zacharias et al., 2011). The Wüstebach catchment covers an area of ≈ 38.5 ha with altitudes ranging from 595 m asl. in the northern part to 628 m asl. in the southern part. The soil types can be subdivided into terrestrial soils (i.e. Cambisols, Planosols) and semi-terrestrial soils (i.e. Gleysols, Histosols) in the riparian zone (Gottselig et al., 2017). The mean porosity of the soils varied from 20 to ~~81%~~ 81% for groundwater influenced soils and from 60 to ~~78%~~ 78% for the terrestrial soils with decreasing values with increasing depth (Wickenkamp et al., 2016). In the riparian zone, the water table varied between 0.0 and 1.6 m, while it constantly remained below the soil bedrock interface outside of the riparian zone (Bogena et al., 2015). The mean annual precipitation was 1220 mm between 1979 and 1999 and the mean monthly temperature varied from -1.5 to 15°C (Bogena et al., 2010). Norway Spruce planted in 1946 is the prevailing vegetation type (Etmann, 2009; Baatz et al., 2014).

Complex landuse in the T.W. Daniel Experimental Forest (US). The T.W. Daniel Experimental Forest lies in one of mountaintops in the Wasatch Mountains (IMW), which is one of four components of Intermountain West of the United States and a transition zone of different climate regimes in both the seasonal and inter-annual time scales. The landscape of the TWDEF site is a patchwork of four domain vegetation communities common to the IMW. Forest communities include aspen and conifer, predominantly Engelmann Spruce, and subalpine fir. Non-forest communities include grasses, forbs and sagebrush. For each dominant vegetation type, three plots and three subplots within each plot were randomly chosen, ~~and TDT sensors were installed. Time series data was evaluated from TDT sensors~~ at 10 cm, 25 cm, and 50 cm ~~depth in each subplot (Lv et al., 2014). and interpolated up to the surface using hydrophysical simulations (Lv et al., 2014).~~

General note: ~~The experimental data collected in these sites can be classified with the following terminology. Calibration datasets typically denote soil samples taken at a single point in time, which are then analyzed for soil water content in the lab and used to~~

Table 1. Overview of the investigated study sites, their average bulk densities $\langle \rho_{\text{bulk}} \rangle$ (in g/cm^3), and average volumetric water equivalent $\langle \theta_{\text{offset}} \rangle$ of additional hydrogen pools (e.g., soil organic carbon, lattice water, root biomass, see eq. 2).

site	period	description	$\langle \rho_{\text{bulk}} \rangle$	$\langle \theta_{\text{offset}} \rangle$	calibration on
<i>Sheepdrove Organic Farm</i> , UK	2015–2016	grassland with central stripe	1.16	9.0	3 sampling days
<i>Braunschweig</i> , GER (Scheiffele, 2015)	05–10/2014	irrigation agriculture	1.49	1.0	3 sampling days
<i>Schäfertal</i> , GER (Martini et al., 2015)	2012–2013	heterogeneous hillslope	1.15	5.2	time series
<i>Grosses Bruch</i> , GER	08–12/2012	pasture grassland, floodplain	1.31	10.0	time series
<i>Wüstebach</i> , GER (Bogena et al., 2013)	04–08/2012	forested river catchment	0.83	6.7	time series
<i>T.W.D.E. Forest</i> , US (Lv et al., 2014)	06–09/2012	complex forest, grass, sage	1.10	4.5	time series

find a calibration parameter N_0 for the specific site. Notwithstanding, by repeating the sampling on other days also a validation can be addressed to some extent. Validation datasets typically denote time series measurements of a soil moisture monitoring network (SoilNet, Bogena et al. (2010)). They are used to validate the performance of the CRNS sensor, but can be also used to find the calibration parameter N_0 with the help of so-called performance measures. In the present work, we are using the terms calibration site and validation site only to distinguish between temporally distinct samples and continuous data of independent soil moisture measurements, although in both cases those datasets are used to calibrate the CRNS probe.

4 Results and Discussion

The equal, conventional, and revised weighting approaches have been tested at six distinct research sites. In section 4.1 we have analyzed the calibration datasets at the *Sheepdrove Organic Farm* and at the *Braunschweig* site, in order to test the explanatory power of the theoretical relation, $N(\theta)$ (eq. 1). Section 4.2 discusses the uncertainty related to a time series dataset in the *Schäfertal* catchment, where the footprint is only partly covered by monitored profiles. Section 4.3 analyzes the potential of CRNS and validation time series datasets in *Grosses Bruch* and *Wüstebach* to identify additional hydrological processes. At the *TWDEF* site in section 4.4, we use monitoring profiles in distinct parts of the footprint, which are individually weighted based on their areal contribution to the neutron signal.

4.1 Improvement of the calibration performance

In the farmlands of Great Britain, managed fields are often divided by stripes of hedges or unmanaged grassland. While unmanaged patches appear to be ideal positions for environmental-monitoring equipment, the presented example shows that CRNS measurements can be biased from the intended information about the field site. Three calibration datasets were collected at various wetness conditions within 9 months. The sampling design was based on the *COSMOS standard sampling scheme* at 25, 75, and 200m, plus an additional location at 1m near the CRNS probe. Fig. 5 demonstrates how the equal (red) and conventional (orange) weighting of the three calibration datasets deviate significantly from the single theoretical relation $N(\theta)$ (Desilets et al., 2010). By choosing the revised vertical weighting approach (green), the calibration points become much

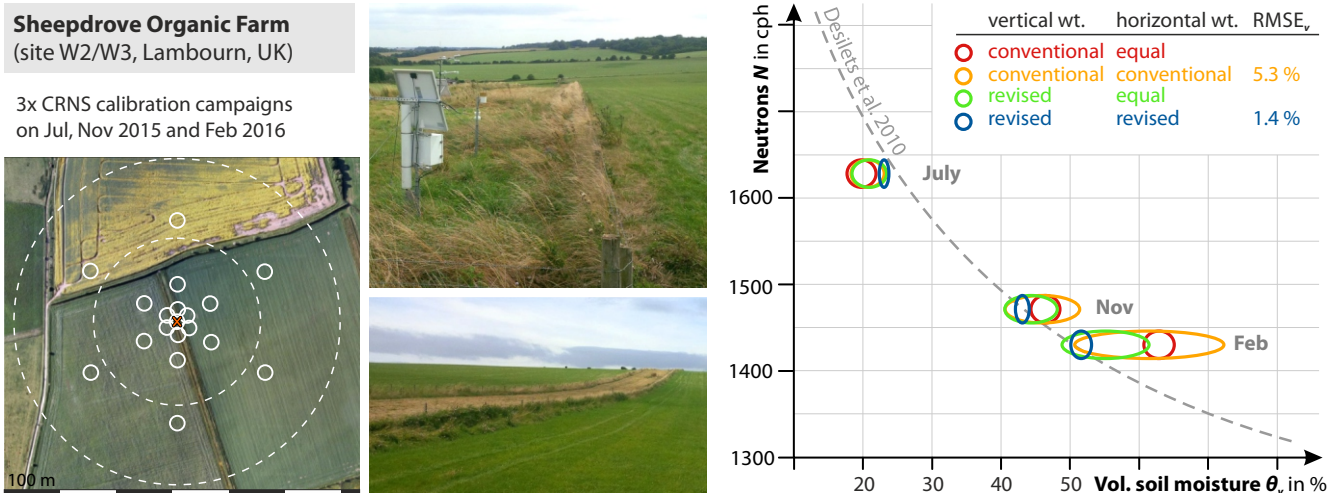


Figure 5. Recalibration of the CRNS sensor in the *Sheepdrove Organic Farm* (Lambourn, UK) using different combinations of vertically and horizontally weighted averages. Sizes of the circles indicate the corresponding uncertainty range of the measurement. The revised approach clearly removes the bias by the exceptional stripe around the sensor, improving the calibration performance with regards to the widely accepted theoretical relation (dashed).

better in line with each other and reveal a single-unique site-specific calibration curve. One of the reasons is the fact that the conventional approach neglects important parts of the sub-soil layers (beyond $\approx D^{conv}$), as indicated in Fig. 1b. Additional *revised horizontal* weighting (blue) leads to a precise match with the theoretical line, supporting the hypothesis that the samples within the stripe are most important to the CRNS signal. As a consequence of the difference between the soil moisture of the grass stripe and the surrounding agricultural fields (wetter in summer and dryer in winter), the application of a non-weighted calibration leads to significant over- or underestimation of the CRNS-apparent soil moisture value, respectively. Furthermore, the experiment clearly shows the importance of a proper positioning of the CRNS probe. If a sensor is dedicated to measure soil moisture in a certain field, it should be ideally placed in that field. CRNS stations at the field border can be biased by different local characteristics, such as land use or soil properties.

Insights from the British grassland have also been confirmed with calibration datasets from an ~~the~~-agricultural site near *Braunschweig*. Scheffele (2015) used the *COSMOS standard sampling scheme* for three calibration campaigns during the agricultural season 2014 in May (no crop), July (maximum water content in biomass), and October (after harvest). Using the *conventional* averaging approach (orange), the ~~calibration data~~ three calibration curves in Fig. 6 indicate that similar soil moisture conditions correspond to increasing neutron counts from May to July and October. Since an increase of N always responds to a decrease of water equivalent, this observation could be interpreted as ~~showing a reduced amount of hydrogen pools in the CRNS signal~~ a reduction of biomass during the period of growing maize. This ~~effect seems to be even higher in October than in July. This~~ is opposed to observations by Franz et al. (2013b) and Baroni and Oswald (2015) who confirmed that the water contained in crop biomass and below-ground residues typically adds to the apparent soil water equivalent.

Irrigated Cropland (Germany) SCHEIFFELE et al. 2015

3x CRNS calibration campaigns during the maize season in May, Jul, Oct 2014

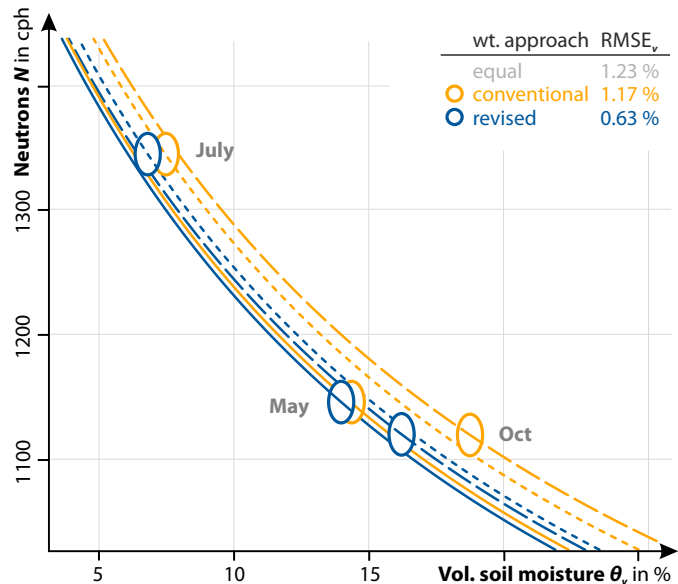
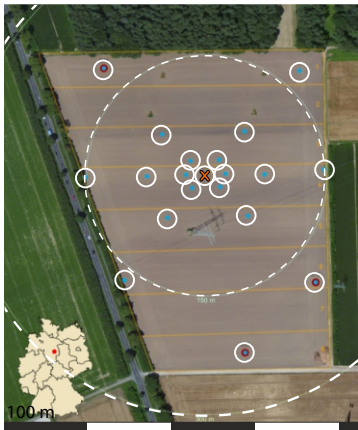


Figure 6. Recalibration of the CRNS sensor in an agricultural maize field (Braunschweig, Germany). Sizes of the circles indicate the corresponding uncertainty range of the measurement, while every such measurement corresponds to a calibration curve $\theta(N, N_0)$. The *conventional* weighting approach is not able to provide a single-unique theoretical line through the three calibration days and further predicts unrealistic reduction of hydrogen pools during maximum plant height (July) and after harvest (Oct). The revised approach converges the datasets to confirm the accepted neutron theory almost in a single calibration curve within uncertainties (ellipses).

The data weighted with the *revised* functions demonstrates that the lines inferred from the calibration points converge much closer to a single theoretical line (Desilets et al., 2010). Although this approach almost removes the unrealistic effect of reduced hydrogen pools, the assumption of a single calibration parameter N_0 must be considered to be illegitimate due to significant biomass dynamics in the investigated period. The remaining deviation of the three calibration curves still indicates a small water reduction effect, however its magnitude is insignificant given the observational uncertainty of the neutron counter. It remains an open question whether a revision of the parameters of eq. 1 would better catch the local dynamics and further contribute to the interpretation of the signal. Nevertheless, the example shows that the revised weighting strategy contributes to a more realistic interpretation of the water availability from CRNS measurements, which is especially important when used in conjunction with irrigation management.

4.2 Uncertainty estimation in a partly covered footprint

In the intensive monitoring site *Schärfertal* a CRNS probe is located in the center of a small area that is covered by the a soil moisture monitoring network. The CRNS footprint extends largely beyond this area, and ~~rather~~ involves patches of agricultural land and a nearby forest (Fig. 7). According to the guideline presented in section 2.4 the contribution of the SoilNet area to the neutron signal ranges from 49% (dry) to 64% (wet). As a consequence, 36–51 % of the neutron variability ~~cannot be~~

Schäfertal catchment (Germany)

MARTINI et al. 2015

CRNS vs. SoilNet across a hill-slope terrain, 2013–2014

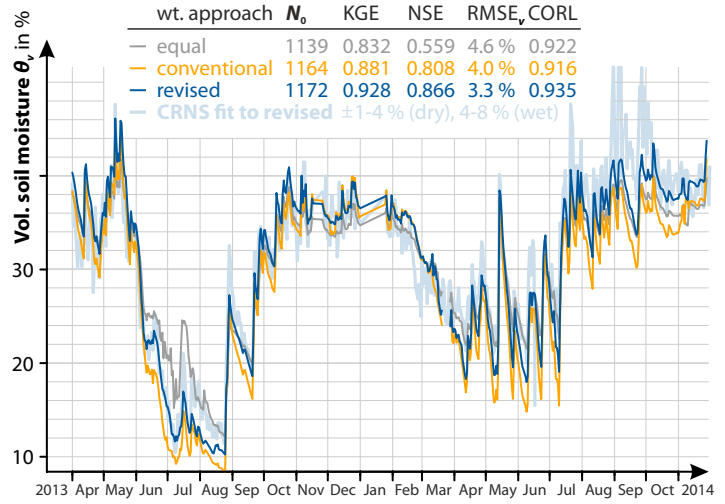
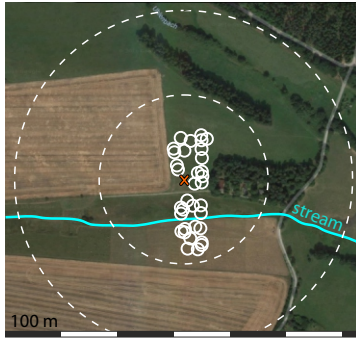


Figure 7. Time series of the CRNS soil moisture data at the SoilNet validation site in Schäfertal (Harz mountains, Germany). The revised average soil moisture using the conventional weighting approach (orange) exhibits poor performance against the CRNS signal (not shown). The revised approach improves four performance measures of the averaged soil moisture (blue) and the CRNS signal (light blue), although the SoilNet probes are unevenly distributed in the CRNS footprint. The uncertainty of volumetric soil moisture introduced by the insufficient coverage ranges from 1 to 8%_{vol} depending on wetness conditions.

explained does not directly respond to the wetness conditions monitored by the irregularly distributed network. However, in most cases the soil moisture of the outer area can be assumed to correlate with the inner area. As an example case, one could assume an absolute variation of the outer area by $\Delta\theta = \pm 5\%_v$, $\Delta\theta_v = \pm 5\%$. Then the uncertainty of the CRNS soil moisture prediction can be further estimated following section 2.4. Under dry conditions ($\langle\theta\rangle \approx 15\%_v$, $\langle\theta_v\rangle \approx 15\%$), the propagated error is $\Delta\theta(N) \approx \Delta\theta_v(N) \approx 1\text{--}4\%_v$, while under wet conditions ($\langle\theta\rangle \approx 35\%_v$, $\langle\theta_v\rangle \approx 35\%$) the neutron counts are less sensitive to soil moisture changes in the outer area due to the smaller footprint (Köhli et al., 2015). This leads to $\Delta\theta(N) \approx \Delta\theta_v(N) \approx 4\text{--}8\%_v$. Therefore, calibration results that resulted in an RMSE of $\approx 4\%_v$ of $\approx 4\%$ (Fig. 7) are not meaningful under wet conditions (where $\Delta\theta(N) \geq 4\%_v$), and are still uncertain under dry conditions (where $\Delta\theta(N) \leq 4\%_v$, $\Delta\theta_v(N) \leq 4\%$). Consequently, the partial coverage of the CRNS footprint by the irregularly distributed SoilNet hampers the proper evaluation of the CRNS data, and especially of the weighting strategies.

Nevertheless, the Schäfertal data shows that the revised weighting approach is robust enough to improve the overall CRNS performance (Fig. 7), even though the sensor is situated in complex terrain where the SoilNet sampling locations are not representative for of the CRNS footprint. As the dominance of the revised approach revised approach shows the best accuracy in all four statistical measures is evident, the RMSE_v is still higher than the measurement error of the daily mean ($\approx 2\%_v \approx 2\%$). This indicates that deviations can be attributed (1) to the insufficient coverage of the SoilNet, and (2) to different processes in different parts of the footprint (e.g. speculative examples are: vegetation growth, forest water interception, snow accumulation, evapotranspiration, plowing, etc.).

4.3 Identification of additional hydrological processes

The pasture site *Grosses Bruch* is a good example how an inappropriate averaging approach could hinder sufficient interpretation of time series data. Fig. 8 shows the soil moisture signal predicted from a stationary CRNS probe and the weighted signal of a soil moisture monitoring network (SoilNet) with sensors installed in depths from 0.05 m up to 0.6 m. Following the precipitation events in the second half of October, the shallow groundwater and loamy texture allowed large water ponds to reside permanently in the outer regions of the SoilNet (light blue indication on the map). As distant areas contribute much less to the CRNS signal than closer ones, the *revised* weighting approach has significantly reduced the influence of the saturated point data to the apparent CRNS average. Without the revised method, the CRNS product would have overestimated the absolute volumetric field saturation by more than ~~5%~~5%. Additionally, beginning in the mid of September ~~a significant amount of~~
10 ~~cows were~~, many cows had been present at this site, which ~~is assumed to lead~~are assumed to have led to large variations of the neutron signal and thus to a non-meaningful expression of correlation-related measures.

In the *Wüstebach* forest site, weighted averaging of the soil moisture monitoring network is performed based on the data presented in Bogen et al. (2013). The analysis shows three interesting effects on the resulting soil moisture signal in Fig. 9. ~~First~~Firstly, the signal processed with the *revised* weighting approach (blue) is wetter than the *conventionally* weighted signal (orange). This effect is reasonable due to the higher soil water contents of the groundwater-influenced riparian zone, where the CRNS is located, compared to the terrestrial soils at the hillslopes. ~~Second~~Secondly, the CRNS signal which was calibrated to the *revised* weighted soil moisture (light blue) outperforms the signal that was calibrated on the *conventionally* weighted soil moisture (light orange). This performance gain is robust in terms of the four measures. In order to avoid incorrect conclusions from overcalibration of the data during rain events (periods of high interception water), we repeated the same analysis
15 for dry periods only, ~~which however resulted in the same conclusions~~. In this case the revised approach again led to highest performance (not shown). ~~Third~~and confirmed the robustness of this approach. Thirdly, differences between CRNS and SoilNet appear to be significantly more prominent for the *revised* approach (blue) in periods following huge precipitation events (May, July and October). Those periods can probably be attributed to expected canopy water storage, interception storage, groundwater rise, and nearby accumulation of ponds. Ponded water in local hollows, trenches, and the litter layer ~~is not visible~~
20 ~~by~~are not visible in the soil profiles of the monitoring network, which are typically installed in solid and elevated ground. In contrast, their effect can be visible in stronger oscillations and shift of the CRNS signal.

The analysis demonstrates that the *revised* weighting of calibration data is essential to identify residual hydrological effects which otherwise can get lost by overfitting. By comparing CRNS data and point measurements, residual information could be used to identify additional processes like biomass dynamics or rainfall interception (Baroni and Oswald, 2015). ~~With the help~~
30 ~~of the~~The methods presented here ~~, we were able~~can support efforts to identify those residuals to a much higher precision. In order to properly quantify the excess water storages in future studies, we would recommend to calibrate the CRNS signal only in periods when the site had not been exposed to rain events for a few consecutive days. In the case of the Wüstebach site (Fig. 9), this would lift the deviations of the CRNS signal (light blue) up from below the averaged soil moisture (blue) and would thus properly pronounce the added water to the system.

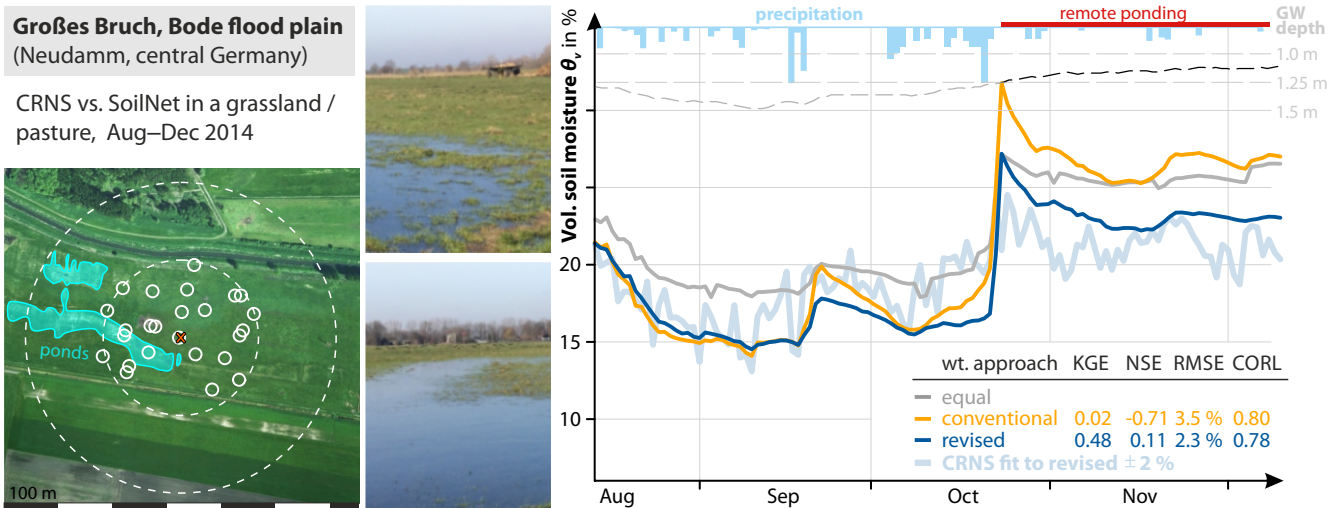


Figure 8. Time series of soil moisture measured in a pasture/floodplain *Grosses Bruch*. The rain events in mid-October 2014 lead to rise of the groundwater level and ponding in regions that are several tens of meters away from the neutron sensor. In that period, *equal* and *conventional* weighting leads to overestimation of apparent soil moisture near the CRNS probe, to which the detector has higher sensitivity than to the remote ponds.

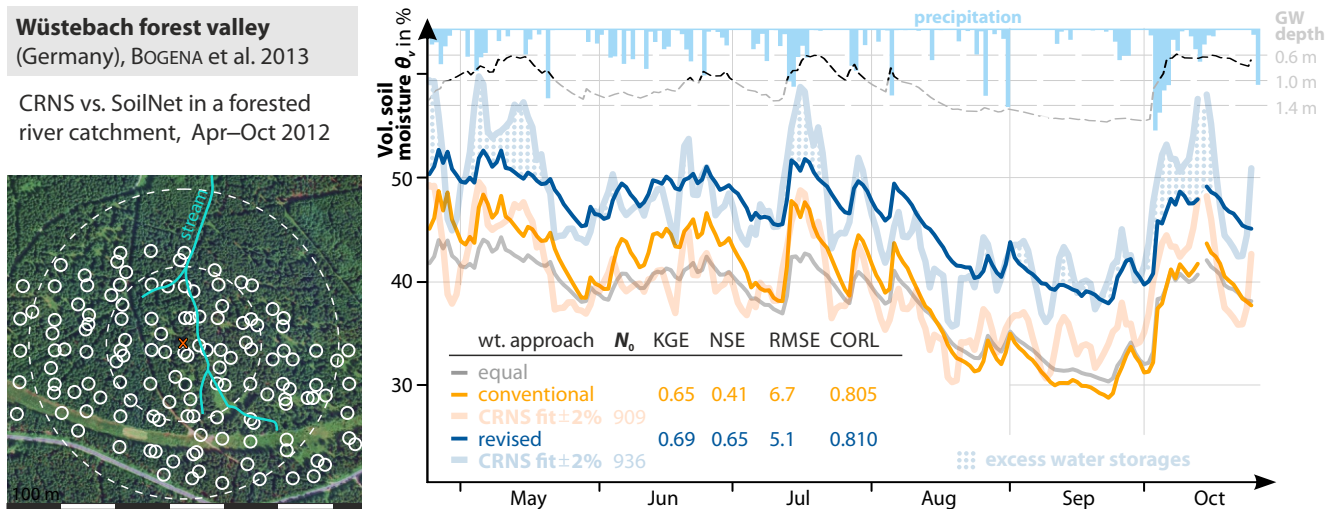


Figure 9. Time series of CRNS soil moisture and ground water at the forested river catchment *Wüstebach*. Fitting the CRNS data to the SoilNet *conventional* average almost completely hides effects like from excess water storages (which could include water in the litter and layer, interception water, groundwater rise, or ponding close to the stream). The *revised* approach emphasizes those additional hydrological processes, while still robustly increasing the sensor performance.

T.W. Daniel Experimental Forest (Utah, US), Lv et al. 2014

CRNS vs. TDT network, among various soil and veg., Jul-Sep 2012

grass sage aspen conifer

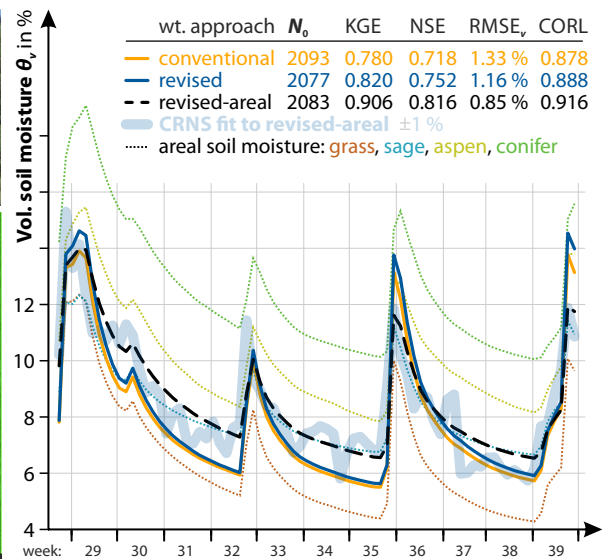
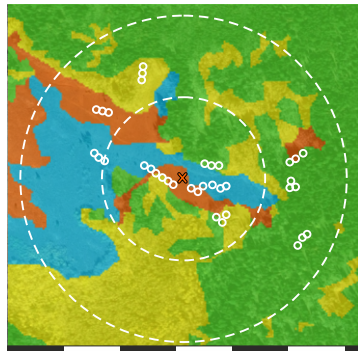
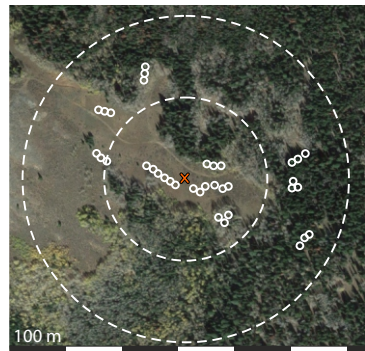


Figure 10. Time series of CRNS and TDT soil moisture at the *T.W. Daniel Experimental Forest*. The area was split into four categories (dotted lines), to which the corresponding soil moisture measurements were assigned. The areal coverage was then averaged (dashed line) [pixel by pixel \(1 m resolution\)](#) with the revised weighting approach, leading to the best performance against the CRNS signal.

4.4 Areal contribution of distinct landuse classes

Lv et al. (2014) analyzed the CRNS performance in the centre of a complex mixture of grass and sage land, surrounded closely by an aspen and conifer forest located in the north of Utah/US. The authors took continuous TDT measurements in all four of those landuse types, complemented the dynamics of the soil moisture profiles with the help of HYDRUS-1D simulations, and found decent correlation to the CRNS signal (compare also similar approaches by Rivera Villarreyes et al. (2011) in a farmland). It is interesting to note that each of the four landuse compartments actually behaved very differently in terms of soil water dynamics, depicted as dotted lines in Fig. 10.

As each compartment is distributed differently in the CRNS footprint, the contribution of each area is different and thus cannot be averaged adequately by a simple weighting approach. However, in contrast to the complex terrain of the *Schärfertal* site (section 4.2), here all landuse and soil types are represented by adequate sample locations. We therefore grouped the soil moisture information of the four compartments, and weighted each 1 m^2 pixel of the areal contribution map depending on the pixel's distance r to the CRNS probe (see last paragraphs of section 2.3). This strategy again showed improved CRNS performance for all measures (black dashed line in Fig. 10) compared to the simple approach of weighting only the individual monitoring points (orange and blue, solid lines). Although the gained performance is not significant in the light of the measurement uncertainty, this areal weighting approach can be suggested as the most realistic representation of the contribution of heterogeneous soil moisture patterns to the CRNS signal.

Table 2. Descriptive summary of the various datasets analysed, using multiple calibration datasets, or time series data from soil moisture monitoring networks (e.g., SoilNet). At all sites, the robust approach either improves calibration/validation performance, or reveals hydrological processes that were otherwise hidden by over-calibration, or both.

dataset from	description	period	data type	gain
<i>Sheepdrove Organic Farm</i> , UK	grassland with central stripe	2015–2016	3 calib. days	data more consistent
<i>Braunschweig</i> , GER (Scheiffele, 2015)	irrigation agriculture	05–10/2014	3 calib. days	data more consistent
<i>Schärfertal</i> , GER (Martini et al., 2015)	heterogeneous hillslope	2012–2013	SoilNet	all measures improved
<i>Grosses Bruch</i> , GER	pasture grassland, floodplain	08–12/2012	SoilNet	revealed remote ponding
<i>Wüstebach</i> , GER (Bogena et al., 2013)	forested river catchment	04–08/2012	SoilNet	revealed additional hydrogen pools
<i>T.W.D.E. Forest</i> , US (Lv et al., 2014)	complex forest, grass, sage	2012–2013	TDT network	all measures improved (areal weight)

4.5 Summary of the analyzed research sites

The experimental sites used in this study and the corresponding gain for environmental and hydrological research is summarized in Table 3.

4.5 Towards a revised sampling scheme

- 5 The presented results are raising the question whether it could be profitable to apply a W_r -flavoured sampling design to the locations used for calibration and validation. Based on Zreda et al. (2008), the *conventional* weighting function W_r^{conv} laid the basis for the *COSMOS standard sampling scheme*, $R_i = \{25 \text{ m}, 75 \text{ m}, 200 \text{ m}\}$ (Franz et al., 2012a). These radii were located in the 33 % quantiles of the footprint (see also Bogena et al., 2013, Table 3):

$$\frac{1}{3} \int_0^\infty W_r^{\text{conv}} \approx \int_0^{\frac{59.48}{59}} W_r^{\text{conv}} \approx \int_0^{\frac{186.142}{59.48}} W_r^{\text{conv}} \approx \int_0^{\frac{186.142}{186.142}} W_r^{\text{conv}}.$$

- 10 As Köhli et al. (2015) introduced the revised weighting function $W_r(h, \theta)$, the standard sampling scheme has become inappropriate, at least in non-homogeneous terrain, for two reasons: (1) the revised sensitivity is more steep, particularly at short distances to the probe, and (2) ~~dynamically depends on wetness conditions~~ depends on the total water equivalent of the surrounding hydrogen pools. In particular, the dynamical horizontal weighting has been applied here to demonstrate its capability to significantly improve CRNS performance. While existing data from point sensor networks could be re-weighted
- 15 in post-processing mode, the question arises whether positioning schemes for upcoming soil moisture networks or calibration campaigns could adapt on the nature of neutron physics to maximize comparability.

- Obviously, it is impossible to provide a new general position plan, due to the temporal variability of W_r and W_d , and the heterogeneity of local structures and conditions. Instead, selection of sampling locations should depend on (1) their representativeness for local features, and (2) their distance to the sensor. In general, it can be ~~strongly~~ recommended to select ~~about~~
- 20 half a significant portion of available sampling points within the nearest 25 m, since ~~the 30–50 % of detected neutrons typically originated in that area. The~~ conventional sampling scheme from Franz et al. (2012a) does not account for ~~40–50 % of detected~~

~~neutrons that originated in that area.~~ this contribution, which is particularly relevant if local correlation lengths of soil moisture can be below 20–30 m. The number of samples in an area should also represent its areal contribution to the neutron signal, in order to reduce measurement uncertainty in areas where the CRNS probe is most sensitive. This argumentation justifies a lower amount of samples in regions far afield.

- 5 To give further advice on a reasonable distribution of points for homogeneous terrain, sampling radii R_i of concentric circles could be calculated as follows.

First, select a total number of circles n based on prior knowledge about the patterns at the individual site. Since the signal contribution of an area between any radii can be calculated by integrating W_r (compare also Köhli et al., 2015, eq. 1), the n borders of equal areal contribution, $r_i, i \in (1, \dots, n)$, can be calculated by solving the integral:

$$10 \int_0^{r_i} W_{r^*}(h, \theta) dr^* \stackrel{!}{=} \frac{i-1}{n} \int_0^{\infty} W_{r^*}(h, \theta) dr^* . \quad (7)$$

Then, the sampling radii R_i can be selected anywhere between r_i and r_{i+1} , as they are assumed to represent the area of the corresponding homogeneous annulus. A simple guideline could be to set the sampling radius in the geometrical center:

$$R_i(h, \theta, p, H_{\text{veg}}) = \begin{cases} r_i + 0.5(r_{i+1} - r_i), & i < n, \\ r_i + 0.5r_i, & i = n, \end{cases} \quad (8)$$

where the last sampling distance R_n could be set to any point that is expected to represent the whole area beyond r_n .

- 15 As an example for $n = 5$, Fig. 11a illustrates five annuluses of the footprint area which equally contribute to the neutron signal. ~~Therefore~~Based on this picture, an equal ~~amount~~ number of sampling locations is recommended in each annulus. For example, ~~using the hitherto common amount~~ if it is desired to use the hitherto proposed number of 18 locations ~~, we recommend~~ for humid conditions ~~to select 3 locations~~, three could be distributed within 2 m distance, another ~~3~~ three within 17 m, and the remaining ~~3 × 4 locations distributed~~ 12 locations evenly within 58, 137, and 240 m, respectively. In order to compare this
- 20 approach with the conventional sampling scheme by Franz et al. (2012a), a 3-annulus scheme can be adapted from eq. 7:

$$\begin{aligned} \text{dry: } & \frac{1}{3} \int_0^{\infty} W_{r^*} \approx \int_0^{24} W_{r^*} \approx \int_{24}^{108} W_{r^*} \approx \int_{108}^{\infty} W_{r^*}, \\ \text{wet: } & \frac{1}{3} \int_0^{\infty} W_{r^*} \approx \int_0^4 W_{r^*} \approx \int_4^{61} W_{r^*} \approx \int_{61}^{\infty} W_{r^*}. \end{aligned}$$

Thus, if $n = 3$ radii are desired for the sampling scheme, a possible (but arbitrary) suggestion could be $R_i^{\text{dry}} \approx \{10 \text{ m}, 65 \text{ m}, 160 \text{ m}\}$ and $R_i^{\text{wet}} \approx \{2 \text{ m}, 25 \text{ m}, 85 \text{ m}\}$, as illustrated in Fig. 11b (~~compare also Heidbüchel et al., 2016a, section 4.2~~)(compare also Heidbüchel et al.

- This arrangement, however, should not relieve scientists of weighting their data in post-processing mode, because each
- 25 annulus still exhibits a sensitivity gradient. But the 20 %-annulus method strongly concentrates locations within most relevant

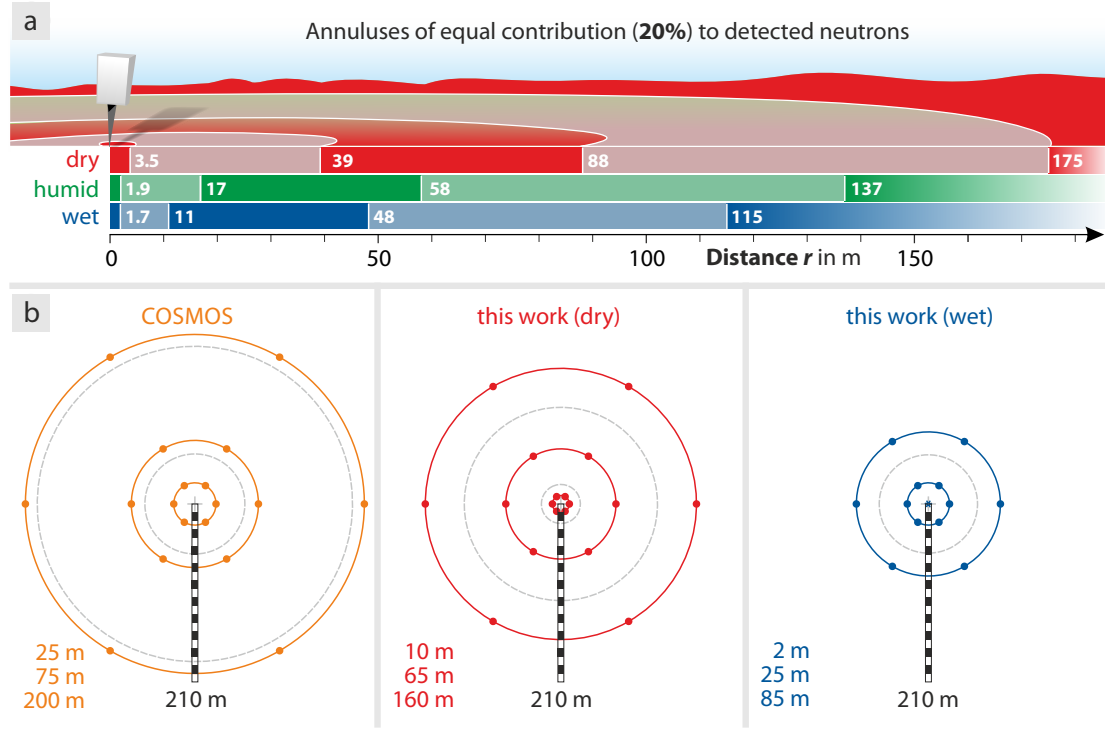


Figure 11. (a) Illustration of regions of equal contribution (20% quantiles) to the neutron signal for three climates, $h = \{2, 7, 20\} \text{ g/m}^3$, $\theta = \{2, 20, 50\} \%$. (b) The *COSMOS* standard sampling scheme based on W_r^{conv} , compared to two exemplary 3-radii-schemes based on the revised function W_{r*} for dry ($h = 1 \text{ g/m}^3$, $\theta = 1 \%$) and wet ($h = 10 \text{ g/m}^3$, $\theta = 40 \%$) conditions. Circles represent the borders of the 33% quantiles, r_i (grey, dashed), and arbitrary sampling distances R_i within these annuluses (colored, solid).

regions favored by detectable neutrons. It is also worth noting that locations need not to be equally distributed among the annuluses. The actual partitioning should rather be guided by expert knowledge about local ~~correlation-lengths-of-spatial-soil~~ ~~moisture-patterns~~. ~~patterns, ideally including spatial distributions of soil characteristics and land use. Proper weighting of~~ ~~sampling data in post-processing can be helpful to compensate the lack of such information.~~ Given entirely homogeneous soil, for instance, a single location would do.

Having that said, is this strategy still robust against complex terrain and variable weather? Field sites differ in terms of spatial heterogeneity and variability due to terrain features or highly heterogeneous correlation lengths of soil moisture patterns. Hence, implementing a strict, universal sampling scheme often is neither feasible nor meaningful with regards to individual conditions in the field. In this study the application of the revised weighting approach led to improved CRNS performance at all sites and for regular and irregular sampling designs. Apparently, the presented weighting procedure is robust across various sites, sampling configurations, and wetness conditions.

An advantage of the approach is its straight-forward applicability, which essentially applies a simple distance-weighted average to a set of data points, and does not require additional, complex analysis or interpolation strategies. The only assumption made is that each sample point represents an equal area in the footprint. Apart from sophisticated optimal sampling designs, three of the most simple sampling strategies are (1) regular grids, (2) random locations, and (3) locations that represent stable soil moisture patterns (of soil moisture or land cover). However, judgment about their performance is far beyond the scope of this work. In any case, it could be recommended to reduce the uncertainty of locations close to the detector (e.g., by taking repeated measurements), because neutron theory has shown that the CRNS signal is most sensitive to nearby locations.

In some cases it could help a simple and pragmatic way to design a reasonable sampling scheme could be to choose sensor locations just in the way it is described by the based on the approximated horizontal sensitivity function W_r^* (Appendix B). Under these conditions As this function does not depend on dynamic changes of surrounding hydrogen pools, an equal average is would be sufficient in post-processing mode. However, the dependence on air humidity h and soil moisture θ will introduce temporal errors to this approach. In this case it could be recommended to correct the equal average with its dynamic variability, which can be expressed as the variation of $W_r(h, \theta)$ around its mean, W_r^* .

To circumvent a potential bias introduced by arbitrarily distributed locations, it could be better to apply different zonation approaches or interpolation methods (e.g., Kriging in polar coordinates) before each cell of the interpolated grid is weighted. However, this always comes with additional assumptions. For example, in the sampling strategy presented in section 4.4 certain soil moisture patterns in the field were categorized as four areas of different landuse which were expected to behave equally in the footprint in terms of soil water dynamics. The horizontal weighting was then applied to those measurements depending on the location of the contributing area in the footprint. In our opinion this method probably provides the highest accuracy in most cases, although it requires prior knowledge about the distribution of soil type compartments in the footprint.

~~This study has focused on the theory and application of the averaging approach, while the performance of different interpolation strategies might depend on local soil patterns and deserves a study on its own, for their performance always depend on the local structures and correlation lengths of soil moisture.~~

5 Conclusions

In this paper a general procedure for horizontal and vertical weighting of point measurements has been presented in order to calibrate and validate the CRNS soil moisture product. The method is based on *revised* spatial sensitivity functions (or weighting functions) from neutron physics simulations (Köhli et al., 2015). Noteworthy, the *revised* functions have been further advanced in the present work with an updated version of the neutron transport code URANOS, by adding dependency on air pressure and vegetation height, and by extending the analysis to distances below 0.5 m. The performance of the *conventional* weighting functions has been compared with the *revised* functions using datasets from a variety of distinct sites located in Germany, the UK, and the US. The main conclusions are summarized as follows: improvements of the CRNS performances for each site are summarized in Table 3, including a note that highlights specific features of the analyses.

The study has led to the following conclusions:

Table 3. Summary of the CRNS performances achieved by changing from the *conventional* to the *revised* weighting approach. $RMSE_v$ is in units of volumetric %. CRNS data has been calibrated on three sampling days (sites 1–2), or on time series of a soil moisture monitoring network (sites 3–6). The revised weighting approach improved the performance at all sites, and helped to identify additional hydrological features.

site	KGE	NSE	$RMSE_v$	correlation	note
<i>Sheepdrove Organic Farm, UK</i>			5.3 → 1.4		bias from grass stripe
<i>Braunschweig, GER</i>			1.2 → 0.6		data became more consistent
<i>Schäfertal, GER</i>	0.88 → 0.93	0.81 → 0.87	4.0 → 3.3	0.92 → 0.94	incomplete SoilNet coverage
<i>Grosses Bruch, GER</i>	0.02 → 0.48	−0.71 → 0.11	3.5 → 2.3	0.80 → 0.78	remote ponding
<i>Wüstebach, GER</i>	0.65 → 0.69	0.41 → 0.65	6.7 → 5.1	0.80 → 0.81	revealed excess water storages
<i>T.W.D.E. Forest, US</i>	0.78 → 0.91	0.72 → 0.82	1.3 → 0.8	0.88 → 0.92	areal weighting of 4 clusters

1. The *revised* averaging of observed point data improved the performance measures ~~when compared to the CRNS water equivalent, $\theta(N)$,~~ of the CRNS product for all investigated sites when compared with the *equal* and *conventional* approach. The method is thus applicable to arbitrarily distributed sampling locations without prior knowledge of soil and landuse features.
2. The results show that unrealistic deviations of multiple calibration datasets from the theoretical line can be removed by applying the revised weighting functions. Thus they support the original hypothesis by Desilets et al. (2010) of a single calibration campaign to capture the local soil moisture dynamics. The approach can thus substantially reduce the calibration efforts for CRNS probes, in contrast to recent findings from Iwema et al. (2015) and Heidbüchel et al. (2016b).
3. Although existing data can be weighted in post-processing mode, missing locations close to the detector as well as insufficient coverage of the CRNS footprint introduce significant uncertainty. It can be quantified with the help of the radial sensitivity functions, as has been presented in ~~section 2.4 and section~~ sections 2.4 and 4.2.
4. Sampling strategies that are based on concentric rings can only be recommended for homogeneous terrain (where each sampling location is known to contribute equally to the signal) and should be adapted on the local site conditions (air pressure, humidity, soil moisture, vegetation cover). If the samples are arranged according to eq. 8, their equally weighted average would provide a value that is comparable to the CRNS product. On the other hand, if the footprint is covered by heterogeneous soil and landuse patterns, the sample locations should be adapted to distinct representative clusters, which in turn should then be weighted based on their areal contribution to the signal (see section 4.4).

5. Data points in the first 0 to 10m radius and 0 to 20cm depth around the sensor are most important for calibration and validation purposes. It is thus recommended to reduce the uncertainty of those measurements, e.g., by ~~avoiding flints in the samples, or by~~ increasing the number of samples in that area.

6. As previous studies have shown, the CRNS soil moisture signal could be calibrated to match the simple, equal average of the areal soil moisture in the footprint. However, important hydrological features could be missed by doing so and data interpretation might become misleading. ~~The~~ When CRNS is combined with independent soil moisture measurements, the revised weighting approach has the potential to reveal otherwise invisible hydrological features, like hydrological features that were otherwise lost in the signal by overcalibration. The approach improved the accuracy by which the CRNS probe was able to sense total changes of water storages other than soil moisture, e.g., from water in the biomass or litter layer, interception water ~~storage~~, groundwater rise, as well as ponding in remote or local areas.

The revised weighting functions presented here are provided in the supplementary material in R, MATLAB, and Excel (see Appendix C). Furthermore, an approximated weighting function W_r^* (Appendix B) has been suggested to simplify quick analysis of the horizontal contributions independently of the local wetness conditions. However, the latter approach should be taken with care, for its adequate performance has not been sufficiently confirmed in this work.

Within this study many datasets have been reanalyzed to test the revised weighting approach. Due to its overall success, it is recommended to revisit also other studies, especially where the conventional approaches have not led to the expected results (e.g., Franz et al., 2012a; Almeida et al., 2014; Iwema et al., 2015). In the light of the discussion provided, we recommend future studies to improve the sensor performance even further. For example by investigating the effect of different sampling designs and interpolation strategies, or by recalibrating the parameters of the theoretical line, $N(\theta)$. Specific URANOS simulations of the neutron distribution at the individual sites can further help to identify the contribution to the detector signal of different parts in the footprint.

On the basis of the results gained by this study and in the light of the conclusions above, it can be deduced that CRNS stations placed in mostly homogeneous terrain offer the highest interpretability of its field-scale signal. This is a feature that the CRNS method has in common with many other hydrometeorological instruments, like weather stations (Jarraud, 2008) or eddy covariance towers (Rebmann et al., 2005). However, even in complex terrain CRNS probes are capable to catch hydrogen pools that otherwise would be very difficult to monitor (e.g. ponding, interception), while their sensitivity to specific parts of the footprint can be quantified with the help of W_r . Thereby, the present study demonstrates a way forward to a better understanding of the spatial contributions to the neutron signal, and elaborates the potential of cosmic-ray neutron sensors to quantify hydrological features that are almost impossible to be caught with conventional instruments.

30 Appendix A: The revised weighting functions

Köhli et al. (2015) did not discuss in detail the dependencies of the weighting functions W_r and W_d on air pressure and humidity, although they made clear that these quantities have significant influence on the footprint radius. For this reason additional

analysis has been performed to investigate the dependency of the sensitivity functions on other environmental variables, and relations have been found that do not further complexify the analytical formulations of W_r and W_d . The weighting functions can easily adapt on variations of air pressure p and vegetation height H_{veg} by scaling their argument r with the scaling rules of the footprint radius R_{86} (cf. Köhli et al., 2015, eqs. 4–6):

$$\begin{aligned}
 & W_r(h, \theta, p, H_{\text{veg}}) \approx W_{r^*}(h, \theta), \\
 5 \quad & \text{and} \quad W_d(\theta, r, p, H_{\text{veg}}) \approx W_d(\theta, r^*), \\
 & \text{where} \quad r^*(r, p, H_{\text{veg}}, \theta) = r \cdot \frac{F_p(p)}{F_{\text{veg}}(H_{\text{veg}}, \theta)}.
 \end{aligned} \tag{A1}$$

Fig. 12 shows that this approximation performs well for various wetness conditions, as simulated curves and pressure-adapted curves are almost parallel (relative agreement is sufficient as weighting functions typically perform in a relative mode).

Moreover, the data analysis in this work sometimes requires realistic weights to be applied for samples located within $r < 0.5\text{m}$, which is by definition an invalid range for $W_r(h, \theta)$ as reported by Köhli et al. (2015). We therefore felt the need to

10 extend the horizontal weighting function to the range below 0.5m. In this work, we introduced an additional exponential factor in eq. 6 which accounts for the steep increase near the detector. This peak has geometrical reasons and essentially comes from the fact that (1) only few neutrons can originate from small radii ($W_{r \rightarrow 0} \rightarrow 0$), and (2) the neutrons coming from higher radii have a lower chance to hit the detector ($W_{r \rightarrow \infty} \rightarrow 0$).

The following parameter functions apply to the updated weighting functions (cmp. also Köhli et al. (2015), Appendix A):

$$\begin{aligned}
 & F_0 = p_0, \\
 & F_1 = p_0(1 + p_3 h) e^{-p_1 \theta} + p_2(1 + p_5 h) - p_4 \theta, \\
 & F_2 = \left((p_4 h - p_0) e^{-\frac{p_1 \theta}{1 + p_5 \theta}} + p_2 \right) (1 + p_3 h), \\
 & F_3 = p_0(1 + p_3 h) e^{-p_1 \theta} + p_2 - p_4 \theta, \\
 & F_4 = p_0 e^{-p_1 \theta} + p_2 - p_3 \theta + p_4 h, \\
 15 \quad & F_5 = \left(p_0 - \frac{p_1}{p_2 \theta + h - 0.13} \right) (p_3 - \theta) e^{-p_4 \theta} - p_5 h \theta + p_6, \\
 & F_6 = p_0(h + p_1) + p_2 \theta, \\
 & F_7 = \left(p_0(1 - p_6 h) e^{-p_1 \theta(1 - p_4 h)} + p_2 - p_5 \theta \right) (2 + p_3 h), \\
 & F_8 = \left((p_4 h - p_0) e^{-\frac{p_1 \theta}{1 + p_5 h + p_6 \theta}} + p_2 \right) (2 + p_3 h), \\
 & F_p = p_0 / (p_1 - e^{-p/1013 \text{ mbar}}), \quad \text{air pressure } p, \\
 & F_{\text{veg}} = 1 - p_0(1 - e^{-p_1 H_{\text{veg}}})(1 + e^{-p_2 \theta}), \quad \text{vegetation height } H_{\text{veg}}, \\
 & D_{86} = \frac{1}{\varrho_{\text{bulk}}} \left(p_0 + p_1(p_2 + e^{-p_3 r^*}) \frac{p_4 + \theta}{p_5 + \theta} \right), \quad \text{adapted distance } r^*.
 \end{aligned}$$

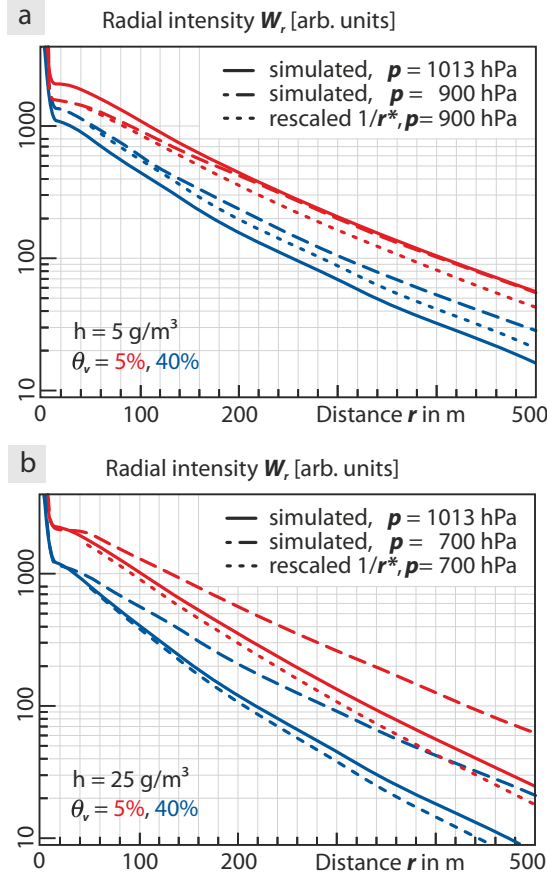


Figure 12. Pressure dependence of the weighting function W_r demonstrated for two cases of air pressure and humidity. The rescaled p -adapted curves (dots, eq. A1) are almost parallel to the non-adapted curves (solid), indicating that the normalized weight leads to the same results. (a) dry midlands, (b) humid highlands.

Appendix B: A simplified approximation

As the analysis in this work has shown, the conventional horizontal weighting function can underrate soil moisture near the sensor by factors up to 25. Furthermore, the variability of the radial weighting function $W_r(h, \theta)$ with environmental conditions can have significant influence on the soil moisture average where accuracy matters. In cases where simplicity and computational efficiency is a criterion, an *approximated weighting function* W_r^* can be proposed, which is an averaged formulation over dry and wet conditions:

$$\langle W_r(h, \theta) \rangle_{h, \theta} \approx W_r^* = \begin{cases} (30 e^{-r^*/1.6} + e^{-r^*/100}) (1 - e^{-3.7 r^*}), & 0 \text{ m} < r \leq 1 \text{ m} \\ 30 e^{-r^*/1.6} + e^{-r^*/100}, & r > 1 \text{ m}. \end{cases} \quad (\text{B1})$$

Table 4. Parameters for the horizontal weighting function, the adapted distance scaling, and the effective penetration depth (Appendix A)

	p_0	p_1	p_2	p_3	p_4	p_5	p_6
F_0	3.7						
F_1	8735	22.689	11720	0.00978	9306	0.003632	
F_2	0.027925	6.6577	0.028544	0.002455	$6.851 \cdot 10^{-5}$	12.2755	
F_3	247970	23.289	374655	0.00191	258552		
F_4	0.054818	21.032	0.6373	0.0791	$5.425 \cdot 10^{-4}$		
F_5	39006	15002330	2009.24	0.01181	3.146	16.7417	3727
F_6	$6.031 \cdot 10^{-5}$	98.5	0.0013826				
F_7	11747	55.033	4521	0.01998	0.00604	3347.4	0.00475
F_8	0.01543	13.29	0.01807	0.0011	$8.81 \cdot 10^{-5}$	0.0405	26.74
F_p	0.4922	0.86					
F_{veg}	0.17	0.41	9.25				
D_{86}	8.321	0.14249	0.96655	0.01	20.0	0.0429	

Fig. 2 shows the decent compromise performed by this approximation for both, short-range and long-range neutrons. Tests with all datasets of this study have indicated that the corresponding soil moisture average deviates from the exactly-weighted average not more than $\frac{2\%}{v} \Delta\theta_v < 2\%$ (not shown). However, the deviation highly depends on h and θ and thus can be an important source of error in temporal analysis where large ranges of humidity are expected. Also note that the integral of the approximated function does not scale with neutron intensity anymore, which has however no impact on normalized weights.

Further studies will demonstrate whether eq. B1 is accurate enough to improve the CRNS performance under various wetness conditions and in different sites. If so, the reduction of computational effort will be valuable for regular analysis and for end users in the applied sector.

Appendix C: Toolbox for spatial weighting of point data

- 10 Proper horizontal and vertical weighting of point measurements is a prerequisite for validation and calibration of the CRNS method. Before the publication of Köhli et al. (2015) almost all users of CRNS probes avoided horizontal weighting. However, the revised neutron physics model reveals a highly non-linear shape of the detector's radial sensitivity. The corresponding publication has been distributed with supplemental material that provided the weighting functions W_r as ready-to-apply `Excel`, `R` and `MATLAB` scripts. As the present study advanced the analytical fits of the spatial sensitivity functions (Appendix A), the
- 15 corresponding updated script files can be found in the supplementary material.

Moreover, an easy-to-use toolbox has been prepared in form of an Excel sheet to guide users through the weighting process. This sheet is able to take a snapshot of point data around the sensor and calculates the corresponding CRNS footprint R_{86} , the average penetration depth D_{86} , and the weighted average soil water content according to guidelines in this manuscript.

Acknowledgements. MS acknowledges kind support by the Helmholtz Impulse and Networking Fund through Helmholtz Interdisciplinary School for Environmental Research (HIGRADE). JI is funded by the Queen's School of Engineering, University of Bristol, EPSRC, grant code: EP/L504919/1. RR, JI and Sheepdrove Organic Farm activities are funded by the Natural Environment Research Council (A Multi-scale Soil moistureEvapotranspiration Dynamics study (AMUSED); grant number NE/M003086/1). GB had financial support from the Deutsche Forschungsgemeinschaft (DFG) under CI 26/13-1 in the framework of the research unit FOR 2131 "Data Assimilation for Improved Characterization of Fluxes across Compartmental Interfaces". CR and MC acknowledge the support of this study by the Integrated Carbon Observation System (ICOS) infrastructure through the Federal Ministry of Research and Education (BMBF). We acknowledge the NMDB database www.nmdb.eu, founded under the European Union's FP7 programme (contract no. 213007) for providing data for incoming radiation, especially from monitors Jungfraujoch (Physikalisches Institut, University of Bern) and Kiel (Institute for Experimental and Applied Physics, University of Kiel). The research was funded and supported by the Terrestrial Environmental Observatories (TERENO), which is a joint collaboration program involving several Helmholtz Research Centers in Germany.

References

- Almeida, A. C., Dutta, R., Franz, T. E., Terhorst, A., Smethurst, P. J., Baillie, C., and Worledge, D.: Combining Cosmic-Ray Neutron and Capacitance Sensors and Fuzzy Inference to Spatially Quantify Soil Moisture Distribution, *IEEE Sensors Journal*, 14, 3465–3472, doi:10.1109/JSEN.2014.2345376, 2014.
- 5 Baatz, R., Bogen, H., Franssen, H.-J. H., Huisman, J., Qu, W., Montzka, C., and Vereecken, H.: Calibration of a catchment scale cosmic-ray probe network: A comparison of three parameterization methods, *Journal of Hydrology*, 516, 231 – 244, doi:10.1016/j.jhydrol.2014.02.026, 2014.
- Baroni, G. and Oswald, S.: A scaling approach for the assessment of biomass changes and rainfall interception using cosmic-ray neutron sensing, *Journal of Hydrology*, 525, 264–276, doi:10.1016/j.jhydrol.2015.03.053, 2015.
- 10 Bogen, H., Herbst, M., Huisman, J., Rosenbaum, U., Weuthen, A., and Vereecken, H.: Potential of wireless sensor networks for measuring soil water content variability, *Vadose Zone Journal*, 9, 1002–1013, 2010.
- Bogen, H. R., Huisman, J. A., Baatz, R., Hendricks Franssen, H.-J., and Vereecken, H.: Accuracy of the cosmic-ray soil water content probe in humid forest ecosystems: The worst case scenario, *Water Resources Research*, 49, 5778–5791, doi:10.1002/wrcr.20463, 2013.
- Bogen, H. R., Huisman, J. A., Güntner, A., Hübner, C., Kusche, J., Jonard, F., Vey, S., and Vereecken, H.: Emerging methods for noninvasive
15 sensing of soil moisture dynamics from field to catchment scale: a review, *Wiley Interdisciplinary Reviews: Water*, 2, 635–647, 2015.
- Cepi, A., Ravazzani, G., Corbari, C., Salerno, R., Meucci, S., and Mancini, M.: Real-time drought forecasting system for irrigation management, *Hydrology and Earth System Sciences*, 18, 3353–3366, doi:10.5194/hess-18-3353-2014, 2014.
- Coopersmith, E. J., Cosh, M. H., and Daughtry, C. S.: Field-scale moisture estimates using COSMOS sensors: A validation study with temporary networks and Leaf-Area-Indices, *Journal of Hydrology*, 519, Part A, 637 – 643, doi:10.1016/j.jhydrol.2014.07.060, 2014.
- 20 Desilets, D. and Zreda, M.: Footprint diameter for a cosmic-ray soil moisture probe: Theory and Monte Carlo simulations, *Water Resources Research*, 49, 3566–3575, doi:10.1002/wrcr.20187, 2013.
- Desilets, D., Zreda, M., and Ferré, T.: Nature’s neutron probe: Land surface hydrology at an elusive scale with cosmic rays, *Water Resources Research*, 46, doi:10.1029/2009WR008726, 2010.
- Dong, J., Ochsner, T. E., Zreda, M., Cosh, M. H., and Zou, C. B.: Calibration and Validation of the COSMOS Rover for Surface Soil Moisture
25 Measurement, *Vadose Zone Journal*, 13, doi:doi:10.2136/vzj2013.08.0148, 2014.
- Etmann, M.: Dendrologische aufnahmen im wassereinzugsgebiet oberer wüstenbach anhand verschiedener mess-und schätzverfahren, Westfälische Wilhelms-Universität, Münster, Germany, 2009.
- Evans, J., Ward, H., Blake, J., Hewitt, E., Morrison, R., Fry, M., Ball, L., Doughty, L., Libre, J., Hitt, O., et al.: Soil water content in southern England derived from a cosmic-ray soil moisture observing system–COSMOS-UK, *Hydrological Processes*, 30, 4987–4999, 2016.
- 30 Franz, T., Zreda, M., Rosolem, R., and Ferré, T.: Field Validation of a Cosmic-Ray Neutron Sensor Using a Distributed Sensor Network, *Vadose Zone Journal*, 11, doi:10.2136/vzj2012.0046, 2012a.
- Franz, T., Zreda, M., Rosolem, R., Hornbuckle, B. K., Irvin, S. L., Adams, H., Kolb, T. E., Zweck, C., and Shuttleworth, W. J.: Ecosystem-scale measurements of biomass water using cosmic ray neutrons, *Geophysical Research Letters*, 40, doi:10.1002/grl.50791, 2013a.
- Franz, T. E., Zreda, M., Ferré, T. P. A., Rosolem, R., Zweck, C., Stillman, S., Zeng, X., and Shuttleworth, W. J.: Measurement depth of the
35 cosmic ray soil moisture probe affected by hydrogen from various sources, *Water Resources Research*, 48, doi:10.1029/2012WR011871, 2012b.

- Franz, T. E., Zreda, M., Ferré, T. P. A., and Rosolem, R.: An assessment of the effect of horizontal soil moisture heterogeneity on the area-average measurement of cosmic-ray neutrons, *Water Resources Research*, 49, 6450–6458, doi:10.1002/wrcr.20530, 2013b.
- Fu, C.-C., Wang, P.-K., Lee, L.-C., Lin, C.-H., Chang, W.-Y., Giuliani, G., and Ouzounov, D.: Temporal variation of gamma rays as a possible precursor of earthquake in the Longitudinal Valley of eastern Taiwan, *Journal of Asian Earth Sciences*, 114, Part 2, 362–372, doi:10.1016/j.jseaes.2015.04.035, earthquake Precursory Studies, 2015.
- Glaser, B., Klaus, J., Frei, S., Frentress, J., Pfister, L., and Hopp, L.: On the value of surface saturated area dynamics mapped with thermal infrared imagery for modeling the hillslope-riparian-stream continuum, *Water Resources Research*, doi:10.1002/2015WR018414, 2016.
- Gottselig, N., Wiekenkamp, I., Weihermüller, L., Brüggemann, N., Berns, A., Bogen, H., Borchard, N., Klumpp, E., Lücke, A., Missong, A., et al.: A Three-Dimensional View on Soil Biogeochemistry: A Dataset for a Forested Headwater Catchment, *Journal of Environmental Quality*, 46, 210–218, 2017.
- Gupta, H. V., Kling, H., Yilmaz, K. K., and Martinez, G. F.: Decomposition of the mean squared error and NSE performance criteria: Implications for improving hydrological modelling, *Journal of Hydrology*, 377, 80–91, 2009.
- Hawdon, A., McJannet, D., and Wallace, J.: Calibration and correction procedures for cosmic-ray neutron soil moisture probes located across Australia, *Water Resources Research*, 50, 5029–5043, doi:10.1002/2013WR015138, 2014.
- Heidbüchel, I., Güntner, A., and Blume, T.: Use of cosmic-ray neutron sensors for soil moisture monitoring in forests, *Hydrology and Earth System Sciences*, 20, 1269–1288, doi:10.5194/hess-20-1269-2016, 2016a.
- Heidbüchel, I., Güntner, A., and Blume, T.: Use of cosmic-ray neutron sensors for soil moisture monitoring in forests, *Hydrology and Earth System Sciences*, 20, 1269–1288, doi:10.5194/hess-20-1269-2016, 2016b.
- Iwema, J., Rosolem, R., Baatz, R., Wagener, T., and Bogen, H. R.: Investigating temporal field sampling strategies for site-specific calibration of three soil moisture–neutron intensity parameterisation methods, *Hydrology and Earth System Sciences*, 19, 3203–3216, doi:10.5194/hess-19-3203-2015, 2015.
- Jarraud, M.: Guide to meteorological instruments and methods of observation (WMO-No. 8), World Meteorological Organisation: Geneva, Switzerland, 2008.
- Köhli, M., Schrön, M., Zreda, M., Schmidt, U., Dietrich, P., and Zacharias, S.: Footprint characteristics revised for field-scale soil moisture monitoring with cosmic-ray neutrons, *Water Resources Research*, 51, 5772–5790, doi:10.1002/2015WR017169, (M. Köhli and M. Schrön contributed equally to this work.), 2015.
- Lv, L., Franz, T. E., Robinson, D. A., and Jones, S. B.: Measured and Modeled Soil Moisture Compared with Cosmic-Ray Neutron Probe Estimates in a Mixed Forest, *Vadose Zone Journal*, 13, –, 2014.
- Martini, E., Wollschläger, U., Kögler, S., Behrens, T., Dietrich, P., Reinstorf, F., Schmidt, K., Weiler, M., Werban, U., and Zacharias, S.: Spatial and temporal dynamics of hillslope-scale soil moisture patterns: Characteristic states and transition mechanisms, *Vadose Zone Journal*, 14, 2015.
- Nash, J. E. and Sutcliffe, J. V.: River flow forecasting through conceptual models part I—A discussion of principles, *Journal of hydrology*, 10, 282–290, 1970.
- Norbiato, D., Borga, M., Degli Esposti, S., Gaume, E., and Anquetin, S.: Flash flood warning based on rainfall thresholds and soil moisture conditions: An assessment for gauged and ungauged basins, *Journal of Hydrology*, 362, 274–290, 2008.
- Rebmann, C., Göckede, M., Foken, T., Aubinet, M., Aurela, M., Berbigier, P., Bernhofer, C., Buchmann, N., Carrara, A., Cescatti, A., et al.: Quality analysis applied on eddy covariance measurements at complex forest sites using footprint modelling, *Theoretical and Applied Climatology*, 80, 121–141, 2005.

- Rivera Villarreyes, C. A., Baroni, G., and Oswald, S. E.: Integral quantification of seasonal soil moisture changes in farmland by cosmic-ray neutrons, *Hydrology and Earth System Sciences*, 15, 3843–3859, doi:10.5194/hess-15-3843-2011, 2011.
- Robinson, D., Campbell, C., Hopmans, J., Hornbuckle, B., Jones, S. B., Knight, R., Ogden, F., Selker, J., and Wendroth, O.: Soil moisture measurement for ecological and hydrological watershed-scale observatories: A review, *Vadose Zone Journal*, 7, 358–389, 2008.
- 5 Samaniego, L., Kumar, R., and Zink, M.: Implications of Parameter Uncertainty on Soil Moisture Drought Analysis in Germany, *J. Hydrometeorol*, 14, 47–68, doi:10.1175/jhm-d-12-075.1, 2013.
- Schattan, P., Baroni, G., Oswald, S. E., Schöber, J., Fey, C., Kormann, C., Huttenlau, M., and Achleitner, S.: Continuous monitoring of snowpack dynamics in alpine terrain by above-ground neutron sensing, *Water Resources Research*, 2017.
- Scheiffelle, L. M.: Assessment of soil moisture dynamics on an irrigated maize field using cosmic ray neutron sensing, Master's thesis, University of Potsdam, Institute of Earth and Environmental Science, Germany, 2015.
- 10 Schrön, M., Zacharias, S., Köhli, M., Weimar, J., and Dietrich, P.: Monitoring Environmental Water with Ground Albedo Neutrons and Correction for Incoming Cosmic Rays with Neutron Monitor Data, in: 34th International Cosmic-Ray Conference (ICRC 2015), Proceedings of Science, http://pos.sissa.it/archive/conferences/236/231/ICRC2015_231.pdf, 2015.
- Sheffield, J.: A simulated soil moisture based drought analysis for the United States, *J. Geophys. Res.*, 109, doi:10.1029/2004jd005182, 15 2004.
- Smith, M., Kivumbi, D., and Heng, L. K.: Use of the FAO CROPWAT model in deficit irrigation studies, FAO, Food and Agriculture Organization of the United Nations (FAO), 2002.
- Vereecken, H., Huisman, J. A., Bogaen, H., Vanderborght, J., Vrugt, J. A., and Hopmans, J. W.: On the value of soil moisture measurements in vadose zone hydrology: A review, *Water Resources Research*, 44, n/a–n/a, doi:10.1029/2008WR006829, 2008.
- 20 Wickenkamp, I., Huisman, J., Bogaen, H., Lin, H., and Vereecken, H.: Spatial and temporal occurrence of preferential flow in a forested headwater catchment, *Journal of hydrology*, 534, 139–149, 2016.
- Wollschläger, U., Attinger, S., Borchardt, D., Brauns, M., Cuntz, M., Dietrich, P., Fleckenstein, J. H., Frieze, K., Friesen, J., Harpke, A., Hildebrandt, A., Jäkel, G., Kamjunke, N., Knöller, K., Kögler, S., Kolditz, O., Krieg, R., Kumar, R., Lausch, A., Liess, M., Marx, A., Merz, R., Mueller, C., Musolff, A., Norf, H., Oswald, S. E., Rebmann, C., Reinstorf, F., Rode, M., Rink, K., Rinke, K., Samaniego, 25 L., Vieweg, M., Vogel, H.-J., Weitere, M., Werban, U., Zink, M., and Zacharias, S.: The Bode hydrological observatory: a platform for integrated, interdisciplinary hydro-ecological research within the TERENO Harz/Central German Lowland Observatory, *Environmental Earth Sciences*, 76, 29, doi:10.1007/s12665-016-6327-5, 2016.
- Zacharias, S., Bogaen, H., Samaniego, L., Mauder, M., Fuß, R., Pütz, T., Frenzel, M., Schwank, M., Baessler, C., Butterbach-Bahl, K., et al.: A Network of Terrestrial Environmental Observatories in Germany, *Vadose Zone Journal*, 10, 955–973, doi:10.2136/vzj2010.0139, 2011.
- 30 Zink, M., Samaniego, L., Kumar, R., Thober, S., Mai, J., Schäfer, D., and Marx, A.: The German drought monitor, *Environmental Research Letters*, 2016.
- Zreda, M., Desilets, D., Ferré, T. P. A., and Scott, R. L.: Measuring soil moisture content non-invasively at intermediate spatial scale using cosmic-ray neutrons, *Geophysical Research Letters*, 35, doi:10.1029/2008GL035655, 2008.
- Zreda, M., Shuttleworth, W. J., Zeng, X., Zweck, C., Desilets, D., Franz, T., and Rosolem, R.: COSMOS: The COsmic-ray Soil Moisture 35 Observing System, *Hydrology and Earth System Sciences*, 16, 4079–4099, doi:10.5194/hess-16-4079-2012, 2012.