



Last 2400 yrs. Environmental changes and human activity recorded in the gyttja-type bottom sediments of the Młynek Lake (Warmia and Masuria Region, northern Poland)

Fabian Welc (1) Jerzy Nitychoruk (2), Leszek Marks (3), Krzysztof Bińka (3), Anna
Rogóż-Matyszcak (2), Milena Obremska (4) Abdelfattah Zalat (5)

1. Institute of Archaeology, Cardinal Stefan Wyszyński University in Warsaw: e – mail: f.welc@uksw.edu.pl.
2. Faculty of Economic and Technical Sciences, Pope John Paul II State Higher School of Education: e-mail: jerzy.nitychoruk@pswbp.pl, annarogoz@interia.pl
3. Faculty of Geology, University of Warsaw: k.binka@uw.edu, leszek.marks@uw.edu.pl: k.binka@uw.edu.pl
4. Polish Academy of Science, Institute of Geological Sciences, m.obremska@twarda.pan.pl
5. Tanta University, Faculty of Science, Tanta University: e-mail: abzalat@science.tanta.edu.eg

Abstract

In the densely forested Warmia and Masuria region (north-eastern Poland) there are many lakes characterized by small size, ~~cal~~ sedimentation and ~~lack of tributaries~~, which makes them a very good archive of environmental and paleoclimatic data for the Holocene. For this reason, one of them - the Młynek Lake, located near the village of Janiki Wielkie, has been selected for multi-faceted palaeoenvironmental research based on a precise radiocarbon scale. Bottom sediments of this reservoir also contain unique information about anthropogen, because a defensive settlement has been operating on its northern shore since the early Iron Age to early Medieval period, which gives opportunity to correlate paleoenvironmental data with phases of the human activity in the last 2400 years. Between 3rd – 2nd century BC the lake was surrounded by a dense forest with domination of warm and wet climate conditions. In turn of 2nd century BC, 2nd century AD forest around reservoir was much reduced, what can be associated with the first - early iron age - occupation phase attested on the stronghold located close to the lake. Between 2nd – 9th century AD gradual restoration of forest and decline of human settlements is attested, along with lake deepening and onset of colder and humid climatic phase which correspond to global cooling episode known as Bond 1 (1.5 ka BP). Period between 9th – 13th century AD indicates again intensive forest clearing around the lake in result of human activity (Middle Age settlement phase on stronghold). This period is characterized by climate change towards warming, which confirms the gradual shallowing of the lake (Middle Age warming period). Since 13 up to 17th century AD intensive cultivation activity around lake took place. The landscape is subjected to strong human transformations which means that environmental and climate changes are not so clear. However, changes in lake sedimentation can be seen around 1600, which may be associated with so called Little Ice Age - cold interval.

Keywords: lake sediments, Lake Młynek, environmental change, human impact, Late Holocene, Iron Age, Middle Ages.



45 1. Introduction

46 Lake sediments are a useful source of proxies of past environmental and climate changes
47 in the Holocene (see Brauer, 2004; Zolitschka, 2007; Wanner et al., 2008; Francus et al., 2013;
48 Ojala et al., 2013; Welc, 2017). The main advantage of lake sediment archives is a relatively high
49 and stable sedimentary rate. Well-dated lake sediment columns (by radiocarbon determination for
50 instance) let to trace both long and short term Holocene palaeoclimate (Smol et al., 2001; Tiljander
51 et al., 2002; Valpola and Ojala, 2006; Czymzik et al., 2010; Elbert et al., 2012; Tylmann et al.,
52 2012; Welc, 2017). Particularly valuable for palaeoclimate reconstructions are sequences from
53 lakes, without river/spring inflow and outflow (Stankevica et al., 2015). In such water bodies, the
54 sedimentation rate is relatively stable and ongoing continually since initiation of the lakes and may
55 contain not only continuous records of lake history but also of its catchment (Wetzel, 2001; Meyers,
56 2003; Stankevica et al., 2015). In northeastern Poland as in northeastern Europe, eutrophic lakes
57 are common. They are typical for their substantial primary production (algae and aquatic
58 macrophytes), because of the predominance of nutrient input over mineralization processes (Cooke
59 et al., 2005). Such intensive bio-productivity results in the deposition of thick organic sedimentary
60 sequences, mostly of organic gyttja composed of the remains of aquatic plants, plankton and
61 benthic organisms transformed by activity of bacteria and mixed with mineral components supplied
62 from the lake basin (Kurzo et al., 2004; Stankevica et al., 2015). There are ca. 1000 freshwater
63 lakes of different size in the Warmia and Mazury Region in north-eastern Poland (Fig. 1). Most of
64 them are located in glacial tunnel valleys formed by meltwater erosion at the termination of the
65 Vistulian (Weichselian) Glaciation (ca. 114-11 ka BP). After deglaciation at the end of the
66 Pleistocene these tunnel valleys were partly filled with deposits and water and persisted in the
67 Holocene. Such lake basins have steep slopes and the lake deposits are underlain by glaciofluvial
68 sand, gravel and silt or by glacial till (Kondracki, 2002; Gałazka, 2009). Many lakes in the Warmia
69 and Mazury Region are small (<1 ha), with stable sedimentation rate and without river inflow and
70 outflow. It is among the reasons that palaeoclimatic investigations, based mainly on pollen analysis
71 are undertaken in this area (e.g., Kupryjanowicz, 2008; Kołaczek et al., 2013).

72 Młynek Lake, located near the village of Janiki Wielkie, has been selected for multi-faceted
73 palaeoenvironmental research based on a precise radiocarbon scale, as it is hypothesized that the
74 bottom sediments of this lake contain a unique record of human impact, as a result of the location
75 of an Iron Age stronghold on the northern shore, which was active (though not continuously) up



76 until the early Middle Ages (Fig. 1). Performed lab analyses is defined major lithofacies and the Late
77 Holocene phases of the lake environmental changes were distinguished, based on reconstruction
78 of regional environmental transformations that were in turn steered by the above-regional climate
79 change. Results were correlated with geoarchaeological data to determine mutual relations between
80 environmental and climatic changes with development of human settlements in the Warmia and
81 Mazury Region during the last 2000 years.

82

83 2. Study area

84 The Młynek is a small water body that has occupied a glacial tunnel valley since the
85 Holocene. The lake is located in the Iława Lakeland in northern Poland, maintains the NNE-SSW
86 course and it is about 720 m long and 165 m wide. The Młynek Lake occupies 7.5 ha in area, its
87 water surface rises to about 101 m a.s.l. and the maximum depth is just over 2 m. The lake is
88 surrounded by a morainic plateau at 120-130 m a.s.l (Fig. 1).

89

90 3. Material and Methods

91 3.1. Ground Penetrating Radar

92 Determination of lake bathymetry and thickness of bottom sediments are extremely
93 important in paleolimnological research to help locate coring sites. This can be achieved through
94 the use of GPR sounding (Lin et al., 2009; Sambuelli et al., 2009; Sambuelli and Silvia, 2012). In
95 Poland winter is a particularly convenient season when ice cover of a lake makes something much
96 easier and improves access and speed of data collection (Hunter et al., 2003). Measurements along
97 and across the lake were carried out in 2017, directly on a lake ice and a snow cover. We used the
98 radar system ProEx of the Malå Geoscience. A radar pulse was generated at a regular distance
99 interval of 0.02 m (900 samples were recorded from a single pulse). The time window of recording
100 was between 250 and 300 ns. Prospection was done with use of a shielded monostatic antenna with
101 250 MHz nominal frequency of the electromagnetic wave.

102

103 3.2. *Coring and sampling*

104 Based on the results of the GPR 4 drillings were done at ca 2 m water depth (Fig. 2) to
105 collect cores according to the Givélet et al. (2004) collecting protocol. Sediment cores were packed
106 into film-wrapped 1 m plastic tubes and transported to the laboratory. These cores (M1-4) were



107 then subjected to magnetic susceptibility measurements ~~results of~~ which enabled to select ~~the core~~
108 ~~M-1 to detailed analyses as the longest and mostly continuous one.~~ Samples from the 3.5 m long
109 core M-1 (geographic coordinates: 53.82486 N, 19.72419 E) were sub – sampled at 5 cm interval
110 used for multi-proxy laboratory analyses.

111

112 3.3. Age-depth model

113 Radiocarbon dating was performed on 4 bulk samples from the core M-1, collected either
114 from organic-rich gyttja or gyttja with dispersed organic matter (Table 1). The organic matter
115 seems to have been derived both from aquatic and terrestrial sources. AMS dating was done in the
116 Poznań Radiocarbon Laboratory in Poland, where ^{14}C measurements were performed in graphite
117 targets (Goslar et al., 2004). Construction of proper and correct age-depth model required an
118 assessment of several agents that could disturb constant accumulation of bottom deposits of the
119 Mlynek Lake. Disturbances could result both from sedimentary and post-sedimentary processes
120 (varied rate of deposition and compaction, impact of bioturbation). The varied influx of material
121 delivered to the lake from the adjacent area is a very important factor. Therefore, a Bayesian age-
122 depth routine mode was chosen ~~and used, and~~ it takes into account ~~a deposition~~ rate and its
123 variability (Blaauw and Christen, 2005; 2011; Blaauw et al., 2007) (Fig. 4). The model was based
124 on default settings, except for section thickness which was set at 0.05 cm given the ~~long~~ length of
125 this core. The Bacon ~~mode~~ uses the IntCal3 curve (Reimer et al., 2013) to calibrate the radiocarbon
126 data.

127

128 3.4. Pollen analysis

129 The core M-1 was sampled every 5 cm for pollen analysis. 70 samples (ca. 10 g each) were
130 treated with 5% HCl, boiled in 5% KOH and hot 30% HF. They were washed with 15% HCl and
131 treated by the standard Erdtman's acetolysis. In each sample about 1000 pollen grains were counted
132 using an optical microscope at 400x magnification.

133

134 3.5 Diatom and Chrysophyte cysts analysis

135 70 samples were prepared for the analysis of diatoms and chrysophyte cysts. They were
136 extracted from 1 g of dry sediment of each sample using the disintegration method in HCl and
137 H_2O_2 , according to the technique proposed by Zalat and Servant-Vildary (2007). For slide



138 preparation, 0.1 ml of the final suspension was dried on coverslips and then mounted onto slides
139 using Naphrax. Diatoms were identified to species level using a Leica photomicroscope with a
140 digital camera and equipped with differential interference contrast (DIC) optics at 1000x
141 magnification with oil immersion. Identification and ecological information of the diatom species
142 ~~was~~ based primarily upon the published literature (e.g. Kilham et al., 1986; Douglas and Smol,
143 1999; Witkowski et al., 2000; Hofmann et al., 2011). Recent taxonomic advances split many
144 diatom taxa of the former genus *Fragilaria sensu lato* into several new genera, including
145 *Fragilaria*, *Pseudostaurosira*, *Staurosira* and *Staurosirella* spp. (Williams and Round, 1987);
146 these new names herein collectively referred to as *Fragilaria sensu lato*. Chrysophyte cysts were
147 described and enumerated following Duff et al. (1995, 1997), Pla (2001) and Wilkinson et al.
148 (2002). Preliminary results of the diatom studies based on the core M-1 were already published by
149 Zalat et al. (2018).

150

151 ~~3.5. Atomic emission spectrometer (ICP-OES)~~

152 ICP-OES spectrometer was used for determination of basic chemical elements in the
153 analyzed samples. Powdered samples were mineralized in a closed microwave Anton Paar
154 Multiwave PRO reaction system. Mineralization procedure was based on the procedure of Lacort
155 & Camarero. Characteristics of lake sediments was done with the extraction method of elements
156 soluble in aquaregia (according to European Standard CEN/TC 308/WG 1/TG 1, slightly
157 modified). Dry samples of about 0.2 g weight were transferred to the PTFE vessel and HNO₃, and
158 HCL Merck Tracepur® was added. The vessels were placed in a rotor and loaded to a microwave.
159 Finally, the samples were analyzed in the Spectro Blue ICP OES spectrometer at Regional
160 Research Center for Environment, Agricultural and Innovative Technologies, Pope John II State
161 School of Higher Education in Biała Podlaska. Berndt Kraft Spectro Genesis ICAL solution and
162 VHGM68-1-500 Element Multi Standard 1 in 5% HNO₃ were used. Operating parameters were
163 as follows: number of measurements: 3, pump speed: 30 Rpm, coolant flow: 12 l/min, auxiliary
164 flow: 0.90 l/min and nebulizer flow: 0.78 l/min.

165

166 3.6. Total organic carbon (TOC)

167 Analyses were done after sample acidification to remove carbonates in the SHIMADZU
168 SSM 5000A analyzer with a solid sample combustion unit. Method: catalytically aided combustion



169 oxidation at 900°C. Pre-acidification, oven temperature: 250°C. Measuring range: TC: 0.1 mg to
 170 30 mg carbon. Sample Amount: 1 gram - aqueous content < 0.5 g. Repeatability: S.D. ±1% of full
 171 scale range (www.ssi.shimadzu.com/products/toc-analyzers/ssm-5000a).

172

173 3.7. *Magnetic susceptibility (MS)*

174 The cores from the Mlynek Lake were subjected to MS measurements using SM-30
 175 magnetic susceptibility meter (ZH Instruments). Due to very high sensitivity (1×10^{-7} SI units) this
 176 device was provided with 8 kHz LC oscillator and its pick-up coil sensor was large enough to
 177 measure sufficiently high volume of sediments with very low magnetic susceptibility. The
 178 measurements were done at every 5 cm along each core (M1-4).

179

180 3.8. *SEM/EDS*

181 This method was used to perform basic microscopic observations of samples of the core M-
 182 1 with point determination of their chemical composition of major elements. All selected samples
 183 were analysed using a scanning electron microscope (SEM) HITACHI TM3000 with an energy
 184 dispersive spectrometer (EDS) SWIFT ED 3000 Oxford Instruments. The samples were not
 185 covered with any conductive material. Magnification range was x 20 to x 30 000, accelerating
 186 voltage 5-15keV.

187

188 3.10. *Archaeological records*




189 Archaeological records from the stronghold Janiki Wielkie, built on a hill at the north-
 190 eastern shore of the Mlynek Lake in the early Iron Age referred to successive human phases
 191 detected in the lake sediments, connected with intensified activity of a man near the lake. During
 192 archaeological research carried out in 2013 and 2016, a total of 143 stratigraphic units were
 193 distinguished, which were divided into seven main settlement phases: phase I-early Iron Age, phase
 194 II-leaving the stronghold from the early Iron Age, phase III-early Middle Ages, phase IV-leaving
 195 the stronghold in the early Middle Ages, phase V-settlement activity on the stronghold in the 11th-
 196 13th century and the last VI phase which is marking finale leaving of the stronghold in the 14th
 197 century (Rabiega et al., 2017, Nitychoruk and Welc, 2017)

198

199 4. Results




200 4.1. Bathymetry

201 A georadar transect across the lake reflects both its bathymetry and lithologic variety of its
 202 bottom (Figs. 2 - 3). The superficial layer is composed of an ice  er, ca 25 cm thick and although
 203 it is almost not visible on radar images due to its thickness being smaller than a vertical resolution
 204 of measurements, there are beneath abundant horizontal multiple reflections of energy from the
 205 bottom of the ice. Two narrow and vertical zones with small diffraction hyperboles at 23 and 29 m
 206 of the transect indicate upward deformation of bottom sediments at the location sites of the
 207 sounding core and the core M-1 (Fig. 3a). The top of the underlying mineral deposits (so-called
 208 hard bottom) is indicated as a distinct downward-deflected reflection surface (Fig. 3b). In a central
 209 part of the lake it occurs at 2.6 m depth (two-way travel time 290 ns) and indicates the top of the
 210 Holocene organic sediments. Unfortunately, beneath there is a signal-absorption zone (Fig. 3d),
 211 resulting from the fact that most sediments are composed of fine-grained organic material (gyttja).
 212 However, thickness of this layer was determined by drillings to about 5 m. A relief of the lake
 213 bottom in the GPR image reflects a cross-section of a glacial tunnel valley that was eroded mainly
 214 in sandy and sandy-gravel deposits. Close to the lake shore (0 to 20 m in the northwest and 110 to
 215 140 m in the southeast) ~~in this section~~ there are numerous oblique and chaotically parallel reflection
 216 surfaces dipping towards the channel axis. They reflect bedding of the Pleistocene sandy-gravel
 217 series that partly filled a subglacial channel (Fig. 3c).

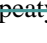
218

219 4.2. Age-depth model

220 ~~Obtained~~ age-depth model of the core M-1 from the Mlynek Lake ~~present calibrated~~
 221 ~~distributions of the individual dates (blue)~~ (Fig. 4). Grey stippled lines show 95% confidence
 222 intervals and the red curve shows the ‘best’ model based on the weighted mean age for each depth.
 223 Good runs of a stationary distribution are shown in the upper left panel, green curves and grey
 224 histograms in the upper middle panel present distributions for the sediment accumulation rate and
 225 ~~mem~~  is indicated in the right panel. The main bottom panel shows the calibrated ¹⁴C dates
 226 (transparent blue) and the age-depth model (darker gray areas) which are indicating calendar ages.

227

228 4.3. Lithology of the lake iments

229 Deposits in the Mlynek Lake are organic-rich. The core M-1 is composed of gray-brown
 230 gyttja at depth 1.8-3.6 m (Fig. 5). On depth 1.45-1.80 m dominated gray-brown ~~peaty~~  detritus



gyttja. At 1.10-1.45 m was recorded very plastic - ~~their~~ gyttja. The uppermost part of the core is composed of grey-brown (depth 0.4 -1.1 m) and hydrated - ~~their~~ tus type gyttja (0.0-0.4 m).

4.4. ~~Sedimentary~~ rate

The sedimentation rate was calculated based on the age-depth model (Fig. 5). Results reflect quite a stable sedimentary environment with a general rate of 1.5 mm a year. ~~There are however~~ parts of the core with a higher or lower rate at 3.46-2.42 m. The rate is stable and equal ca 1.5 mm a year, at 2.42-1.77 mm, drops to 1 mm, then rises at 1.77-0.30 m to 1.3-1.8 mm a year. At 0.0-0.30 m the sedimentary rate is the highest and equal ca 3 mm a year.

4.5. Magnetic susceptibility and total organic carbon

The MS of deposits is highly dependent on their lithological composition and grain size content (Dearing, 1994; Sandgren and Snowball, 2001). It reflects not only presence but also size of ferromagnetic particles in a sample (Verosub and Roberts, 1995). Increased content of ferromagnetic minerals such as magnetite, Fe-Ti oxides or pyrrhotite generates higher MS, whereas biotite, pyrite, carbonates and organics result in ~~their~~ lower values. Total volume of magnetic minerals in lake sediments reflects mostly climatic change in a catchment (Bloemdal and deMenocal, 1989; Snowball, 1993; Peck et al., 1994).

The core M-1 shows MS differentiations but due to organic character of the sediments (Fig. 2), its values are relatively low, from 0.002 to 0.034×10^{-7} units SI. At 3.50-2.58 m, MS rises and drops in turn from 0.01 to 0.02×10^{-7} SI, which partially corresponds to a grey-brown gyttja with organic matter. MS drops at depth 2.60-1.89 m, reaching a minimum at 1.63 m. Higher up, MS rises again reaching the highest value at 1.35 m, then there is a minimum at 1.05 m and the next maximum at 0.69 m.

Magnetic susceptibility is generally low in biogenic sediments as gyttja, which is composed mainly of microfossil skeletons e.g. diatoms and radiolarians (Thompson and Oldfield, 1986). In Mlynek Lake there is an apparent negative relationship between TOC and MS. Several intervals show both higher percentages of TOC and lower MS values. At 1.40 m, TOC indicates a sudden drop, probably due to deforestation and MS is significantly rising due to increasing input of terrestrial (non-organic) material to the lake. Such coincidence clearly indicates that TOC is both autochthonous and allochthonous (Fig. 6)



262 Changes in MS in sediments of the Młynek Lake sediments are related most probably to
 263 input of clay into the lake and diagenetic conditions in bottom sediments. Iron oxides in the Młynek
 264 Lake are most probably of detrital origin and were delivered to the basin through incised deep
 265 valleys located at the northwestern shore. Concentration of ferromagnetic minerals is connected
 266 with periodical intensified soil erosion around the lake. Higher content depends also on diagenetic
 267 processes in bottom sediments. Oxidation of organic matter in anoxic conditions (by iron-oxide-
 268 reducing bacteria) results usually in increased content of ferromagnetic particles (small particles
 269 are removed first). In opposite, oxygenation by heavy floods stops this process and small magnetic
 270 particles are preserved (Jelinowska et al., 1997).

271

272 4.6. Water-soluble elements

273 Various factors influence distribution and accumulation of geochemical elements in the lake
 274 sediments. Most important are texture, mineral composition, oxidation/reduction state,
 275 absorption/desorption and physical transportation processes (Ma et al., 2016). Curves of
 276 representative elements are generally used to characterize sedimentary environments. Most
 277 analysed elements do not indicate any clear trend with depth in the Młynek Lake. The curves of S
 278 and TOC show significant rises at 2.0-1.4 m that are slightly correlated with decreased contents of
 279 Al, Fe, K, Ca, Mg and magnetic susceptibility (Fig. 6).

280 Sulphur content is correlated with existence of iron sulphides. SEM/EDS analysis indicated
 281 occurrence of both phramboidal pyrite and euhedral crystals, characterized as an octahedral
 282 crystallized form (Fig. 8). Euhedral crystals are formed as syngenetic in euxinic conditions
 283 (Sageman and Lyons, 2003; Berner et al., 2013; Ivanic et al., 2018), whereas phramboidal ones are
 284 typical for early diagenetic pyrite but they can still occur as syngenetic ones (Goldhaber, 2003).
 285 Phramboids in the examined core are noted at various depths, but they are more common if the
 286 TOC content is higher. In the studied core, Fe is positively correlated with Al and Ti (Fig. 8 and
 287 table 2). Fe-Ti oxides are noted in SEM EDS analysis. They are resistant to surface weathering and
 288 carry trace elements (Bauer and Velde, 2014). At ca. 3 m, high frequency peaks of Al, K, Ca, Na,
 289 Mg, Fe and S occur (Fig. 6). Such occasional high intensity events leave a stronger geochemical
 290 imprint, because of sedimentation in shallow water (Ivanic et al., 2018). The highest contents of
 291 detrital elements like Al, K, Ca and Mg should be associated with sudden delivery of clastic
 292 material to the lake e.g. during increasing flood or rainfall (Wirth, et al., 2013). Especially Al is



extremely immobile, that is why it should be regarded as a typical lithogenic element (Price et al., 1999). Additionally, Al is a major constituent of soils and other sediments as a structural element of clays. It has a strong positive correlation with many major elements (Fig. 8 and Tab. 2). The association between Al and other elements can be therefore used as a basis for the comparison of natural elemental content in sediments and soils. Most elements like Al, K, Fe and Mg are from terrigenous inputs to the lake. Ca originated mainly from terrigenous bicarbonate inputs and was deposited in the lake as a solid carbonate (Miko et al., 2003). Calcium is evidently more easily removed in solution from a mineral material and it is highly concentrated in highly erosional periods (Mackereth, 1965).

The Fe/Ca ratio is considered as the eutrophication proxy. The highest ratio points out to low oxygenation, eutrophic or dystrophic reservoirs (i.e. Kraska and Piotrowicz, 2000; Holmes and De Decker, 2012), whereas the low Fe/Ca ratio in bottom sediments indicates oligotrophic character of a lake. In the studied core sediments, Fe/Ca ratio varies from 0.808 (depth 3.05 m) to 3.677 (1.2 m). The ratio is low, indicating oligotrophic conditions in bottom sediments which gives conflicting results with other data. The Fe/Ca ratio can be disturbed by detrital input to the lake (Fig. 6).

The Mn/Fe ratio is low (0.004 -0.19) in all studied cores and reflects lower O₂ concentration in a water column (e.g. López et al., 2006; Naeher et al., 2013), which is typical for eutrophic lakes. The extremely low value (0.004) at depth 3.05 m is probably a response to Fe delivery with terrigenous material. The dysaerobic conditions are also confirmed with Th/U ratios (0.03-0.41) which are lower than the critical value of 2 as indicated by Myers and Wignall (1987) and Wignall (1994).

The ratio of total Fe to total P ranges from 13.91 (1.2 m) to 43.76 (3.05 m). The values are typical for other lakes in northern Poland, which vary from 3 to 180 according to Bojakowska (2016). The release of P follows in reducing conditions. According to Ahlgren et al. (2011) is even up to ten times greater than in aerobic conditions. However, there is a poor correlation with other redox proxies i.e. Th/U (R=0.08). It can be caused by presence of Al which forms Al(OH)₃. In such systems even though the redox state favors release of P from iron minerals, the P is immobilized by binding with hydroxides. Thus, the presence of Al(OH)₃ can stop release of P even in an anoxic hypolimnion (Hupfer and Lewandowski, 2008). It can be a case in the studied sediments as Al shows positive correlation with P content (R=0.49). Except for Fe/Ca, all counted ratios point out



to anoxic conditions in all studied cores which is typical to eutrophic lakes. Nevertheless, as all proxies are characterized by extreme values at the 3.05 m, they seem to depend on external load of terrigenous material. It is confirmed with very good positive correlation between Fe and Al (0.95), Fe and Ti (0.64) Mn and Al (0.46) or Mn and Ti (0.78).

4.7. Diatoms

Studies of the Lake Mlynek bottom sediments revealed presence of more than 200 diatom taxa belonging to 54 genera (Zalat et al., 2018) (Fig. 9). Diatoms were generally abundant and well to moderately preserved in most samples, although with admixture of mechanically broken valves, especially in the topmost part of the core. Results of the diatom analysis and relative abundance of the most dominant taxa enabled subdivision of the M-1 core section into 6 diatom assemblage zones (Fig. 9) that reflected phases of lake development (Zalat et al., 2018). Moreover, changes in chrysophyte cysts distributions along with variation in diatom composition could be related to changes in pH, climate and trophic status. Stomatocysts can be used as the index of lake-level changes, habitat availability, metal concentrations and salinity. The periphytic diatom species dominate the planktonic ones throughout the core. The main change in diatom composition is indicated by a shift from the assemblage dominated by periphytic species through marked intervals to a planktonic one. A high proportion of periphyton to plankton assemblages was reported as indicative for a long-lasting ice-cover (Karst-Riddoch et al., 2005) whereas a shift from benthic to planktonic diatom taxa is considered for an ecological indicator that is generally interpreted in high altitude lakes as record of shorter winter and increased in temperatures. Common occurrence of benthic forms represented by *Staurosira venter*/*Staurosirella pinnata* diatom assemblage indicates circumneutral to slightly alkaline shallow water with lowering lake levels and prolonged ice cover. However, *Aulacoseira* is the most dominant planktonic genus followed by *Cyclotella* and low frequency of *Cyclotella*. High abundance of eutrophic planktonic taxa in some interval denotes lake productivity and nutrient concentrations tend to increase with rising water temperature. The marked fluctuations in the abundance of the periphytic to plankton assemblages along the core section explained relative water level changes associated with climate change. Diatom preservation in the upper part of the core (depth 1.40 -0.15 m) is moderate to relatively poor and the recognized assemblage was represented by the occurrence of some dissolved and teratological diatoms valves, in particular the topmost part of the core section (0.30-0.15 m). Such



dissolution and deformed diatoms may reflect a dramatic decline in water quality, variations in lake chemistry and shallowness environment beside the increase in human activity and anthropogenic nutrient additions to the lake system (Zalat et al., 2018).

358

359 4.8. Pollen

Five local pollen assemblage zones (LPAZ M1-M5) were established in the pollen sequence of the Młynek Lake. They reflect regional as well as local vegetation changes, with varied ratios of arboreal (AP) and non-arboreal (NAP) pollen that indicate environmental oscillations (Fig. 10):

363

Pollen zones	Depth in meters	Description
M1	3.40-3.20	Zone represents closed forest communities dominated by hornbeam and alder, which colonized marshland near lake shores. Plants of open spaces are only rarely noted as well as indicators of anthropogenic activity (e.g. <i>Plantago lanceolata</i>). There is therefore every reason to conclude that vegetation at that time was relatively natural and not disturbed
M2	3.15-2.70	This is the period of major changes in the forest surrounding the lake. Anthropogenic impact on vegetation has led to removal of hornbeam and partial opening of the forest or its fragmentation. The resultant clearings were occupied by birch, pine and hazel. Oak also seems to expand in ecological importance, however its higher frequency is surely caused by increase in pollination under better lighting condition rather than the real expansion of trees. The light gaps were also occupied by a wide variety of herbaceous types. They include apophytes, anthropophytes or cultivated plants - mainly grasses, mugwort <i>Cannabis/Humulus</i> , <i>Plantago lanceolata</i> , <i>Rumex acetosella</i> , <i>Secale</i> and cereals undiff. All this demonstrates the existence in this area of a clear occupation phase.
M3	2.65-2.05	This is the level of dynamic restoration of forest communities. The decline of settlements and semi-open habitats generated by them, caused short term expansion of birch into abandoned and open areas, and then replaced by hornbeam rebuilding its position to the level observed in the pollen zone M1. Also elm and ash expand again into riparian forest. All this caused decline of content of birch, pine and hazel. During the second half of the zone we can observe abrupt expansion of beech. Herbaceous plants, abundant in the previous zone are only sporadically noted.
M4	2.0-1.45	The lower boundary of the zone marks the onset of another settlement phase and as a result clearing of the forests of similar magnitude as in the M2 pollen zone. First of all disturbances took place in beech forest and to a lesser extent in these dominated by hornbeam. Also in this case open habitats were temporarily occupied by birch (especially toward the end of the zone, when the human activity is lower) and less intensively by poplar. Alder in the second part of the zone increased in abundance, probably expanded into exposed marginal areas of the lake. The level of anthropogenic activity is only slightly lower to that demonstrated in M2 zone. It is distinguished by the presence of Gramineae, <i>Artemisia</i> , <i>Cannabis/Humulus</i> , <i>Plantago lanceolata</i> , <i>Rumex acetosella</i> , <i>Secale</i> and cereals undiff.
M5	1.40-0.15	Pollen zone is characterized by increased intensity of human impact and deforestation. Hornbeam, oak and beech were intensively removed from woodlands. However, in this case the resultant gaps are not occupied by birch. In the two samples, sudden short-term culmination of pine and alder, hard to interpret, are observed. Disturbances in the environment in this level are by far the most substantial. It is clear from the abundant presence of cultivated plant - mainly <i>Cannabis</i> , showing clear peak at the beginning, <i>Secale cereale</i> and other cereals as well as weeds invading the crops. Also herbaceous plants within open areas - including those on pastures are abundantly noted - Gramineae, <i>Artemisia</i> , <i>Plantago lanceolata</i> , <i>P. maior</i> , <i>P. media</i> , <i>Rumex acetosella</i> , <i>R. acetosa</i> and other.

364

365 5. Młynek Lake phases of environmental transformation and human activity

Based on results of lithological, geochemical, palynological and diatomological analysis-
 supplemented by archaeological data, 5 main environmental phases of the Lake Młynek
 development were distinguished (Fig. 11). Radiocarbon ages supplied with detailed chronology



whereas pollen data and stratigraphy of the stronghold to the north-east of the lake enabled correlation of human activity with environmental data during the last 2400 years.

371

372 5.a. *Phragmites*: ca. 2300 – 2100 cal. BP (3.45-3.15 m)

373 The lake hydrology was stable and it was quite shallow (Fig. 11). This phase corresponds
 374 to LPAZ M-1 which represents closed forest communities dominated by hornbeam and alder.
 375 These species colonized marshland near the lake shore. Open community plants and indicators of
 376 anthropogenic activity (e.g. *Plantago lanceolata*) are rare, and vegetation around the lake was
 377 natural and not disturbed. Diatom assemblage at the beginning of the diatom subzone DZ1 (depth
 378 3.45-3.40 m) indicates a shallow and slightly alkaline lake environment, followed (3.35-3.15 m)
 379 by a rising lake level. Common occurrence and domination of *A. granulata* suggests high trophic
 380 status of slightly alkaline freshwater environment with high silica concentration (Zalat et al., 2018).
 381 MS during this phase is high and it corresponds to high content of Fe, Ti and Al, indicating
 382 increased influx of terrigenous material to the lake, presumably activated by more intensive
 383 rainfall. High δ¹³C_{org} suggest (intensive production of biomass in the lake) relatively wet and warm
 384 climatic phase.

385

386 5.1. Phase 2: ca. 2100 – 1830 cal. BP (3.15-2.75 m)

387 This is the period of major changes in the environment around the lake, with significant
 388 anthropogenic impact. Phase corresponds with the LPAZ M2, characterized by reduction and
 389 fragmentation of the hornbeam-dominated forest. Birch, pine and hazel expanded under better
 390 lighting conditions in a partially open forest whereas oak increase was caused only by higher
 391 production of pollen. Mid-forest pastures occupied rather small-scale open areas, as can be seen
 392 from higher percentages of *Plantago lanceolata* and other herbaceous plant-e.g. Gramineae,
 393 *Artemisia*, *Rumex acetosa/acetosella*. Cultivated plants-*Cannabis* t., and *Secale* are rarely noted,
 394 however their occurrence is entirely consistent with the other indicator present during this phase.
 395 Human occupation is attested by presence of *Cannabis/Humulus*, *Plantago lanceolata*, *Rumex*
 396 *acetosella*, *Secale* and cereals undiff. This period is similarly expressed and commonly noted in
 397 numerous palynological sequences in the neighboring area (see for example Noryśkiewicz, 1982,
 398 1987, 2013; Bińka et al., 1991; Ralska-Jasiewiczowa et al., 1998). During this phase, planktonic
 399 diatoms were replaced by benthic taxa accompanied by *Gyrosigma acuminatum*, which indicates



lowering of the lake level and dominance of mesotrophic alkaline freshwater environment. The lower stands were interrupted by short rising water level episode at 2.90–2.85 m (Zalat et al., 2018). Low water level is also confirmed by high frequency peaks of Al, K, Ca, Na, Mg, Fe, V, Cd and S, resulting from delivery of clastic material to the lake, due to reduction of vegetation (cf. Wirth et al., 2013). Presence of pollen taxa as *Plantagolanceolata*, *Rumexacetosella*, *Secale* and cerealia undiff., demonstrates human occupation in the vicinity of the lake. Pollen data indicate that societies of that time cultivated rye and probably hemp. It is the oldest settlement phase at Janiki Wielkie hillfort that corresponds to the end of the La Tène and the early Roman period (1st century BC/1st century AD. Human communities of this time living in the vicinity of the lake can be connected with settlements of the East-Baltic Kurgan Culture (Rabiega et al., 2017).

During phase no. 2 climatic conditions were still similar to these forms, but more dry - what is reflected by shallowing of the lake. This relatively wet and warm climatic phase should be correlated with so called Roman Climatic Optimum (see., McCormick et al., 2012).

5.2. Phase 3: 1830 – 1150 cal. BP (2.75-1.95 m)

This is the level of dynamic recovery of forest communities. Absence of human impact indicators shows decline in populations residing in catchment. Reduction of settlements and semi-open habitats generated by the allowed for short term expansion of birch into abandoned and open areas, and then replaced by hornbeam rebuilding its position to the level observed in the pollen zone M1. Also, elm and aspen expand again into riparian forest. All this caused decrease of content of birch, pine and hazel. During the second half of the zone we can observe abrupt expansion of beech. Herbaceous plants, abundant in the previous zone are only sporadically noted. Diatom phase 3 (2.70-2.45 m) present great abundance of planktonic diatoms what indicates deepening of the lake, enhanced thermal stratification, reduced mixing and increased thermal stability (Zalat et al., 2018). Such gradual rise of humidity and cooling resulted in increased vegetation cover and higher lake water level, and it is supported by geochemical indices. There is also a gradual drop in MS, corresponding with decreased content of detrital elements as Fe, Ti, Al and K, accompanied by a rise in TOC and of the ratio Fe/Ca. Lower MS and content of Al (acting as a major constituent of soils) with higher TOC suggests extension of vegetation cover, resulting in limited erosion in spite of gradually higher precipitation in the lake catchment and therefore, rise of its water level. In this phase there are no traces of human activity at the settlement nearby (Rabiega et al., 2017).



431 The climate in phase 3 is gradually changing towards cooler, but also more humid. There is an
432 increase in rainfall and a decrease in evaporation, which is reflected in lake sedimentation, where
433 the lake deepens, resulting in a reduction in the sediment install showing less productivity and
434 greater lake stability. This phase should be associated with the global cooling episode known as
435 Bond 1 (1.5 ka BP) (see., Bond et al., 1997; Welc, 2019)

436

437 5.3 Phase 4: 1150 – 780 cal. BP (1.95-1.45 m)

438 Phase no. 4 is correlated with palynological zone M4 and was divided into two subphases 4a
439 and 4b (Fig. 11). The lower boundary (subphase 4a) of this zone marks the onset of another
440 settlement phase and as a result clearing of the forests of similar magnitude as in the M2 pollen
441 zone. First of all, disturbances took place in beech forest and to a lesser extent in these dominated
442 by hornbeam. Also, in this zone, birch and less intensively poplar occupied temporarily abandoned
443 open areas (especially toward the end of the zone, when the human activity is lower). Alder, in
444 the second part of the zone increased in abundance, probably expanding into exposed marginal
445 areas of the lake. The level of anthropogenic activity is only slightly lower to that demonstrated in
446 M2 zone and reflected by the presence of Gramineae, *Artemisia*, *Cannabis/Humulus*, *Plantago*
447 *lanceolata*, *Rumex acetosella*, *Secale* and cerealia undiff. Diatom assemblages indicate a
448 deepening of the lake (Zalat et al., 2018). In this time synanthropic plants disappear and they come
449 back again in the early Middle Ages about 700 AD. Higher TOC corresponds with lower content
450 of detrital material (Fe, Ti, Al and K) and lower MS, and it can be interpreted as progressing
451 humidity (Fig. 6). This phase can be correlated with the Migration Period and the early Middle
452 Ages. At the end of the phase 4 during the early Middle Ages, in the settlement close to the lake
453 (archaeological phase III) after removal of the layers formed by natural development of a soil (due
454 to abandonment of the site in the early Roman Period) a defence rampart was raised. At its upper
455 surface a wooden-loamy wall was constructed. After short period this stronghold was destroyed.
456 A charcoal from a fired wall represents this destruction phase at the end of the Phase IIIA was
457 dated at 1245 ± 25 cal. BP i.e. 682-870 AD (95,4% probability) and 1090 ± 30 cal. BP i.e. 892-
458 1014 AD (95,4% probability) (Rabiega et al., 2017).

459 Subphase 4b (1.70-1.45 m) marks the onset of another settlement phase, resulting in further
460 forest clearing around the lake and increase in birch invading into open areas. In this period alder
461 which expanded into exposed marginal areas increased in abundance. This is documented by the



great abundance of *Aulacoseira* species associated with *Puncticulata radiosa* in the upper part of diatom zone 5 at 1.85-1.70 m. The diatom assemblage suggests episode of relative rising lake level, increased trophic state of the lake and stronger turbulent mixing conditions. Moreover, the greatest reduction of abundance *Fragilaria sensu lato* accompanied by a high abundance of *A. granulata* could have resulted from forest clearings around the lake caused by settlers. In this time alder increased its abundance as it probably expanded into exposed marginal areas of the lake. The anthropogenic activity, expressed by presence of herbaceous plants (including cereals) Gramineae, *Artemisia*, *Cannabis* t., *Plantago lanceolata*, *Secale* and cerealia undiff. as well as by forest clearings is only slightly lower than in the zone M2 and generally it resembles those in the Roman Period. Towards the end of this phase some decline in intensity of human impact is observed.

Subphase 4b corresponding to diatom zone 6 which is characterized by high abundant benthic *Fragilaria sensu lato* species with sporadic occurrence of planktonic taxa. The diatom assemblage reflects lowering water level and slight alkaline freshwater, lower nutrient concentrations, low silica content (Zalat et al., 2018). In the strongholds at the lake shore, the next human activity phase at the end of the 11th century AD when a new rampart was raised. Wooden constructions were also built, traces of which were excavated in the area of the gate passage. The settlement was finally abandoned presumably in the first half of the 13th century and then, its ramparts were strongly eroded, with their material mowing towards the yard and the moat (Rabiega et al., 2017). After the early Middle Ages, the area around the lake was occupied by the Prussian tribe of Pomezanians and this region named Geria was a borderland. It consisted of network of strongholds located among others at Bądko, Urowo, Wieprz and Kraga (Szczepański, 2009). In the south the tribe bordered directly with the Slavic settlement, which includes two strongholds located around 30 km away from Janiki at Łanioch near the Silm Lake in the SSE and Zajęczki near Ostróda in the SE (Grażawski, 2006).

Phase 4 is marked by continuation of previous climatic conditions, which are gradually influenced by human activity. Subphase 4b is characterized by climate change towards warming, which confirms the gradual shallowing of the lake and increasing the rate of sedimentation. Under this sub-phase, human impact on the environment is already so great that the picture of climate change is not clear. There is no doubt, however, that this is a warm period, which should be correlated with the Medieval Warm Period - MWP (see, Mann et al., 2009).



5.4. Phase 5: 780 cal. BP (1.45- 0 m)

This phase starts about 1200 AD and is connected with the Middle Ages early Modern Period. Intensive cultivation and treatment of hemp is terminated but cultivation of cereals and presence of synanthropic plants indicates human activity in a direct vicinity of the lake. The water level is not high and slightly changes. At 1.4 m there is a drop in TOC, probably due to deforestation. MS is significantly rising at the same depth as result of increasing input of terrestrial material to the lake, presumably caused by human activity (deforestation). The intervals of increased precipitation were reflected by significantly more intensive terrestrial runoff to the lake. This statement is confirmed by quasi-linear correlation of MS with contents of Fe and Ti in sediments (Fig. 8). The modern evolution of the lake resulted in development of a shallow (2-3 m) and gradually overgrowing lake.

Phase 5 is a period of increased human activity around the lake, which means that environmental and climate changes are not so clear. However, changes in lake sedimentation can be seen around 1500, which may be associated with the development of the Little Ice Age (see., Büntgen, U., Hellmann, 2014).

5. ~~Conclusions and discussion~~

The presented scenario of environmental changes in the Młynek Lake and its vicinity during the last ca. 2400 years can be recapitulated in the following way. In the phase 1 (3rd-2nd century BC) the lake was surrounded by a dense forest and it was not deep. Increased influx of terrigenous material to the lake can be connected with periods of more intensive local precipitation. A climate was quite warm and wet. The phase 2 (2nd century BC-2nd century AD) is a period of major changes in the environment around the lake, with increasing anthropogenic impact. The forest was much reduced. Intensive human activity is attested by presence of *Cannabis/Humulus*, *Rumex acetosella*, *Secale* and cereals undiff. Diatoms indicate a drop of the lake water level. The oldest settlement phase was identified in the stronghold close to the lake (end of the La Tène and the Roman periods). This relatively wet and warm climatic phase should be correlated with so called Roman Climatic Optimum. The phase 3 (2nd-9th century AD) indicates gradual restoration of forest communities and absence of synanthropic plants what proves a decline of human settlements around the lake. The middle part of this phase should be associated with the global cooling episode known as Bond 1 (1.5 ka BP). The next - phase 4 (5th-13th century AD) is expressed by forest



524 clearing restoration around the lake and onset of the next settlement phase. At the end of this phase
525 a defence rampart was raised in the stronghold and a wooden-loamy wall was constructed on it.
526 The lower boundary of phase (10th-13th century AD) indicates further intensive forest clearing
527 around the lake. Human activity is marked by presence of Gramineae, *Artemisia*,
528 *Cannabis/Humulus*, *Plantago lanceolata*, *Secale* and *Cereale* undiff. It corresponds with a
529 beginning of the next settlement phase in the stronghold (end of 11th century AD) when the next
530 rampart was raised, with wooden constructions at its top. The stronghold was finally abandoned in
531 the first half of the 13th century AD. This period is characterized by climate change towards
532 warming, which confirms the gradual shallowing of the lake (Middle Age warming period). The
533 phase 5 (since 13th century AD up to present) is reflected by intensive cultivation and treatment of
534 hemp and cereals close to the lake during intensive colonisation of Warmia and Masuria by
535 Teutonic state. The water level is not high and changes slightly only, presumably due to
536 reclamation works. The landscape is subjected to strong transformations connected with
537 anthropoppression, resulting in significant deforestation of the area. The landscape is subjected to
538 strong human transformations which means that environmental and climate changes are not so
539 clear. However, changes in lake sedimentation can be seen around 1500, which may be associated
540 with so called Little Ice Age - clod interval.

541 The above scenario seems to be confirmed by earlier paleoenvironmental research
542 conducted in the southwestern part of the Warmia-Masuria Lake District (Kupryjanowicz, 2008;
543 Kołaczek et al., 2013). Earlier studies of lake sediments in the Warmia and Mazury Region were
544 based mainly on palynological examination, a comparyson of the Młynek Lake sequence with other
545 sites must also be based on palynology (Fig. 12). As it was mentioned, the Lake Młynek located in
546 the wide zone of Lakelands of north-eastern Poland. The closest site Woryty (Pawlikowski et
547 al., 1982, Noryśkiewicz and Ralska-Jasiewiczowa 1989, Ralska-Jasiewiczowa and Latałowa,
548 1996), ca. 35 km in a straight line to the east is a reference for this area. The paleoenvironmental
549 records delivered by the Młynek Lake core is very similar to the Woryty palynological succession
550 with the human impact during the Roman period and the Medieval time. More detailed comparison
551 is impossible, because of low resolution of the pollen spectrum at Woryty. The Lake Družno, ca.
552 35 km to the north (Zachowicz et al. 1982, Zachowicz and Kępińska 1987, Miotk-Szpiganowicz et
553 al. 2008), is the second closest site with palynological examination to the Młynek Lake. Low
554 resolution and lack of age-depth model from this lake makes comparison of pollen results between



these two sections difficult. Even though the Družno Lake is located in the Vistula Delta depression, the pollen record for the last 2400 years is similar to the Młynek Lake one with human impact marked out during the Medieval time and presence of human indicators during the Roman period. Differences in natural vegetation are local and especially exposed in higher share of alder in pollen diagram from the Družno Lake, most probably caused by wet habitats in the Vistula Delta. In the 2013 year were published New palynological data from the Łańskie Lake (Madeja, 2013), located ca. 55 km to the south-east from the Młynek Lake show higher percentages of pine and lower share of beech. This record results probably not only from different environmental conditions in the lake vicinity but also different size of the lakes. The Młynek Lake is a very small (ca. 0.7 km²) and mid-forest basin, whereas the Łańskie Lake area is over 10 km² and shows much more regional pollen record. Based on periodical appearances of plant human indicators and archaeological data between 300 BC and 800 AD Madeja (2013) distinguished three human phases of West Baltic Barrow, Wielbark and Prussian cultures. In the palynological diagram from the Młynek Lake (Phase 2) the first is indicated only, including termination of the La Tene and the Roman Period. Significant growth of human indicators from 1000 yrs. AD is visible in diagrams from both sites. A more local record from the Młynek Lake is marked especially by high percentage of *Humulus/Cannabis* pollen grains (up to 25%), in 13-15th centuries. In the sediments of the Łańskie Lake, presence of pollen grains of hemp was discontinuous and not exceeded 1%.

Numerous pollen data are available from the area adjacent to the south-west. The investigation from the Brodnica Lake District i.e. Strażym Lake (Noryśkiewicz, 1987, Noryśkiewicz and Ralska-Jasiewiczowa 1989), Oleczno Lake (Filbrandt-Czaja, 1999, Filbrandt-Czaja et al. 2003) and Chełmno Lakeland (Noryśkiewicz 2013) presents human activity in the Neolithic. Palynological record from this region evidenced settlement during La Tene, Roman and Medieval periods. Comparison of the pollen record from other sites located to the east of the Młynek Lake shows differences in share of a beech. The content of *Fagus sylvatica* pollen grains changes in the north-eastern direction and significantly high content of *Fagus sylvatica* in the Młynek Lake sediments is caused by a very local record from a small lake. Decline of *Fagus sylvatica* is related to continental climate and is visible in a pollen diagram from Salęt Lake (Szal et al. 2014a), Mikołajki Lake (Ralska-Jasiewiczowa 1989), Żabińskie Lake (Wacnik et al. 2016) and Wigry Lake (Kupryjanowicz 2007). Simultaneously with beech decline, a share of *Picea abies* increases. A record of human activity in palynological spectra from eastern Poland was noted in



many sites. There is similarity between pollen records from the Młynek Lake and far away over 100 km to the east in the Masurian Lakes: Wojnowo, Miłkowskie and Jędrzele (Wacnik et al. 2014). Recorded shorter or longer human impact on vegetation during Roman Period and Medieval time is divided by ca. 500-600 years without cultivation and with natural reforestation (and strong share of birch, a pioneer tree). Similar duration of human regression in the Lake Młynek profile began and terminated earlier than recorded in the lakes Wojnowo or Miłkowskie. Different history of human activity shows the results from the Lake Sałęt (Szal et al. 2014b). Pollen grains of cultivated and ruderal plants are present continuously from the early Iron Age to the early Medieval time. In opposite to the Młynek Lake or Wojnowo and Miłkowskie pollen record, the suggested constant settlement in the neighborhood of the Sałęt Lake occurred with a very short decline of human impact only in 880-980 AD (Szal et al. 2014a). Cited examples of palynological reconstruction of vegetation changes under climatic conditions and human impact reflect differences between a record from the Młynek Lake and much larger and predisposed regional view of environmental history.

600

601 Acknowledgments

602

The research project has been funded by the National Science Centre in Poland – project: UMO-2016/21/B/ST10/03059: *Correlation of prehistoric and early medieval settlement phases in north-east Poland with the changes of the natural environment in the light of lacustrine sediments study.*

606

607 References:

608

Ahlgren, J., Reitzel, K., De Brabandere, H., Gogoll, A., Rydin, E.: Release of organic P forms from lake sediments, *Water Research*, 45, 565-72. 2011.

Bauer, A., Velde, B.: *Geochemistry at the Earth's Surface Movement of Chemical Elements*. Springer – Verlag Berlin Heidelberg, 2014.

Bińka, K., Cieśla, A., Łacka, B., Madeyska, T., Marciniak, B., Szeroczyńska, K., Więckowski, K.: The development of Błędowo Lake (Central Poland) – A palaeoecological study, *Studia Geologica Polonica*, 100, 1-83, 1991.

615



- 616 Blaauw, M., Christen, J.A.: Flexible Paleoclimate Age-Depth Models Using an
 617 Autoregressive Gamma Process, *Bayesian Analysis* 6/3, 457–474, 2011
- 618 Blaauw, M., Christen, J.A., Mauquoy, D., van der Plicht, J., Bennett, K.D.: Testing the
 619 timing of radiocarbon dated events between proxy archives, *The Holocene* 17, 283–288,
 620 2007.
- 621 Bloemdal, J., deMenocal, P.: Evidence for a change in the periodicity of tropical climate
 622 cycles at 2.4 Myr from whole – core magnetic susceptibility measurements, *Nature* 342,
 623 897–900, 1989.
- 624 Bojakowska, I.: Phosphorous in lake sediments of Poland – results of monitoring research,
 625 *Limnological Review*, 16, 15–25, 2016.
- 626 Brauer, A.: Annually laminated lake sediments and their palaeoclimatic relevance. In: *The*
 627 *Climate in Historical Times. Towards a Synthesis of Holocene Proxy Data and Climate*
 628 *Models*. GKSS School of Environmental Research, 111–129, edited by: Fischer, H.,
 629 Kumke, T., Lohmann, G., Flöser, G., Miller, H., von Storch, H., Negendank, J.F.W.,
 630 Springer Verlag, 2004.
- 631 Brauer, A., Dulski, P., Mangili, C., Mingram, J., Liu, J.: The potential of varves in high-
 632 resolution paleolimnological studies, *PAGES News* 17 (3), 96–98, 2009.
- 633 Brenner M., Whitmore T.J., Curtis J.H., Hodell D.A., Schelske, C.L.: Stableisotope ($\delta^{13}\text{C}$
 634 and $\delta^{15}\text{N}$) signatures of sedimented organic matter as indicators of historic lake trophic
 635 state, *J. Paleolimnol.*, 22, 205–221, 1999.
- 636 Büntgen, U., Hellmann, L., The Little Ice Age in Scientific Perspective: Cold Spells and
 637 Caveats, *Journal of Interdisciplinary History* 44:3, 353–368, 2014.
- 638 Czymzik, M., Dulski, P., Plessen, B., von Grafenstein, U., Naumann, R., Brauer, A.: A 450-
 639 year record of spring-summer flood layers in annually laminated sediments from Lake
 640 Ammersee (southern Germany), *Water Resour. Res.*, 46, W11528, 2010.
- 641 Dearing, J. A.: Environmental magnetic susceptibility: using the Bartington MS2, 1994.
- 642 Douglas, M.S.V., Smol, J.P.: Freshwater diatoms as indicators of environmental change in
 643 the High Arctic, 227–244, in: *The Diatoms: Applications for the Environmental and Earth*
 644 *Sciences*, edited by: Stoermer, E.F., Smol, J.P., Cambridge Univ. Press, Cambridge, 1999.
- 645 Duff, K.E., Zeeb, B.A., Smol, J.P.: *Atlas of Chrysophycean Cysts*, 2. Kluwer Academic
 646 Publishers, Dordrecht-Boston-London, 1995.



- 647 Duff, K.E., Zeeb, B.A., Smol, J.P.: Chrysophyte cyst biogeographical and ecological
 648 distributions: a synthesis, *Journal Biogeography* 24, 791–812, 1997
- 649 Elbert, J., Grosjean, M., von Gunten, L., Urrutia, R., Fischer, D., Wartenburger, R.,
 650 Ariztegui, D., Fujak, M., Hamann, Y.: Quantitative high-resolution winter (JJA)
 651 precipitation reconstruction from varved sediments of Lago Plomo 47°S, Patagonian
 652 Andes, AD 1530–2001, *Holocene* 22 (4), 465–474, 2012.
- 653 Filbrandt-Czaja A.: Zmiany szaty roślinnej okolic jeziora Oleczno w późnym holocenie
 654 pod wpływem czynników naturalnych i antropogenicznych, in: *Studia nad osadnictwem*
 655 *średniowiecznym ziemi chełmińskiej* 3, 61–68, edited by: W. Chudziak, Toruń, 1999.
- 656 Filbrandt-Czaja A., Noryśkiewicz B., Piernik A.: Intensification gradient of settlement
 657 processes in pollen diagrams from Dobrzyńsko- Olsztyńskie Lake District, *Ecol. Quest.*, 3,
 658 125–137, 2003.
- 659 Snowball, I.: Mineral magnetic properties of Holocene lake sediments and soils from the
 660 Karsa Valley, Lappland, Sweden, and their relevance to paleoenvironmental reconstruction,
 661 *Terra Nova* 5, 258–270, 1993.
- 662 Francus, P., von Suchodoletz, H., Dietze, M., Donner, R.V., Bouchard, F., Roy, A.-J.,
 663 Fagot, M., Verschuren, D., Kröopelin, S.: Varved sediments of Lake Yoa (Ounianga Kebir,
 664 Chad) reveal progressive drying of the Sahara during the last 6100 years, *Sedimentology*
 665 60 (4), 911–934, 2013.
- 666 Gałązka, D.: Szczegółowa mapa geologiczna Polski 1:50 000, ark. Iława (210). Centr.
 667 Arch. Geol. Państw. Inst. Geol., [Detailed Geological Map of Poland, scale 1:50 000, Iława
 668 sheet (210). Warsaw, 2009.
- 669 Givélet, N., Le Roux, G., Cheburkin, A., Chen, B., Frank, J., Goodsite, M. E., Kempter,
 670 H., Krachler, M., Noernberg, T., Rausch, N., Rheinberger, S., Roos-Barraclough, F.,
 671 Sapkota, A., Scholz, Ch., Shetyk, W.: Suggested protocol for collecting, handling and
 672 preparing peat cores and peat samples for physical, chemical, mineralogical and isotopic
 673 analyses. *J. Environ. Monit.*, 6, 481–492, 2004.
- 674 Goldhaber, M.B.: Sulfur-rich sediments, in: *Treatise on Geochemistry*, edited by: Holland,
 675 H.D., Turekian, K.K., Pergamon, Oxford, 257–288, 2003.
- 676 Grążawski, K.: Z najnowszych badań pogranicza słowiańsko-pruskiego w rejonie iławsko-
 677 lubawskim. *Pruthenia*, vol. II, Olsztyn, 2006.



- 678 Hofmann, G., Werum, M., Lange-Bertalot, H.: Diatomeen im Süßwasser-Benthos von
 679 Mitteleuropa. A.R.G. GantnerVerlag, Rugell, Liechtenstein, 1–908, 2011.
- 680 Holmes J.A., De Decker P.: The chemical composition of ostracod shells: application in
 681 Quaternary paleoclimatology, in: Ostracoda as proxies for Quaternary climate change,
 682 Developments in Quaternary Science 12, 131-140, edited by: Horne D., Holmes J.A.,
 683 Rodriguez-Lazaro J. & Viehberg F., 2012.
- 684 Hunter, L. E., Delaney, A. J., Lawson, D. E. Davis, L.: Downhole GPR for high-resolution
 685 analysis of material properties near Fairbanks, Alaska, in: Ground Penetrating Radar in
 686 Sediments, Geological Society, Special Publications 211, 275-285, edited by: Bristow, C.
 687 S., Jol, H. M., London, 2003.
- 688 Ivanić, M., Lojen, S., Grozić, D., Jurina, I., Škapin, S.D., Troskot-Čorbić, T., Mikac, N.,
 689 Juračić, M.: Geochemistry of sedimentary organic matter and trace elements in modern lake
 690 sediments from transitional karstic land–sea environment of the Neretva River delta (Kuti
 691 Lake, Croatia), Quaternary International, 494, 286-299, 2018.
- 692 Jelinowska, A., Tucholka, P., Wieckowski, K.: Magnetic properties of sediments in a Polish
 693 lake: evidence of a relation between the rock-magnetic record and environmental changes
 694 in Late Pleistocene and Holocene sediments, Geophys. J. Int., 129,727-736, 1997.
- 695 Karst-Riddoch, T.L., Pisaric, M.F.J., Smol, J.P.: Diatom responses to 20th century climate-
 696 related environmental changes in high elevation mountain lakes of the northern Canadian
 697 Cordillera, Journal of Paleolimnology 33, 265–282, 2005.
- 698 Kilham, P., Kilham, S.S., Hecky, R.E.: Hypothesized resource relationships among African
 699 planktonic diatoms, Limnology and Oceanography 31, 1169–1181, 1986.
- 700 Kołaczek, P., Kuprjanowicz, M., Karpińska -Kołaczek, M., Szal, M., Winter, H., Danel,
 701 W., Pochocka, -Szwarc, K., Stachowicz – Rybka, R.: The Late Glacial and Holocene
 702 development of vegetation in the area of a fossil lake in the Skaliska Basin (north-eastern
 703 Poland) inferred from pollen analysis and radiocarbon dating, Acta Palaeobot., 53(1), 23–
 704 52, 2013.
- 705 Kondracki, J.: Geografia regionalna Polski. Wyd. Nauk. PWN, Warszawa, 2002.
- 706 Kraska M., Piotrowicz R.: Lobelia lakes: specificity, trophy, vegetation and protection, in:
 707 protection of beds and wetlands of Pomerania region 3, 48-52, edited by: Malinowski B.,
 708 2000.



- 709 Kuprijanowicz, M.: Badania palinologiczne w Polsce północno-wschodniej, in: Człowiek i
 710 jego środowisko (Polska północno-wschodnia w holocenie), Botanical Guidebooks 30, 77–
 711 95, edited by: Wacnik A., Madeyska, 2008.
- 712 Kupryjanowicz, M.: Postglacial development of vegetation in the vicinity of the Wigry
 713 Lake, *Geochronometria* 27, 53–66, 2007.
- 714 Lin, Y.T., Schuettelpelz, C.C., Wu, C.H., and Fratta, D.: A combined acoustic and
 715 electromagnetic wave-based techniques for bathymetry and subbottom profiling in shallow
 716 waters, *Journal of Applied Geophysics*, 68, 203–218, 2009.
- 717 López, P., Navarro, E., Marce, R., Ordoñez, J., Caputo, L., Armengol, J.: Elemental ratios
 718 in sediments as indicators of ecological processes in Spanish reservoirs, *Limnetica* 25, 499–
 719 512, 2006.
- 720 Ma, L., Wu, J., Abuduwaili, L., Liu, W.: Geochemical Responses to Anthropogenic and
 721 Natural Influences in Ebinur Lake Sediments of Arid Northwest China, *Plos One*,
 722 13/11(5):e0155819: doi: 10.137, 2016.
- 723 Madeja J.: Vegetation changes and human activity around Lake Łańskie (Olsztyn Lake
 724 District, NE Poland) from the mid Holocene, based on palynological study, *Acta*
 725 *Palaeobotanica* 53(2), 235–261, 2013.
- 726 Mann, M. E., Zhang, Z., Rutherford, S., et al.: (2009). Global Signatures and Dynamical
 727 Origins of the Little Ice Age and Medieval Climate Anomaly, *Science*. 326 (5957), 1256–
 728 60, 2009.
- 729 McCormick, M., Büntgen, U., Cane, M.A., Cook, E.R., Harper, K., Huybers, P., Litt, T.,
 730 Manning, S.W., Mayewski, P. A., More, A.F.M., Nicolussi, K., Tegel, W.: Climate Change
 731 during and after the Roman Empire: Reconstructing the Past from Scientific and Historical
 732 Evidence, *Journal of Interdisciplinary History* 43:2 (Autumn, 2012), 169–220.
- 733 Miotk-Szpiganowicz, G., Zachowicz, J., Uścińowicz, S.: Review and reinterpretation of the
 734 pollen and diatom data from the deposits of the Southern Baltic lagoons, *Polish Geological*
 735 *Institute Special Papers*, 23, 45–70, 2008.
- 736 Myers, K.J., Wignall, P.: Understanding Jurassic Organic-rich Mudrocks—New Concepts
 737 using Gamma-ray Spectrometry and Palaeoecology: Examples from the Kimmeridge Clay
 738 of Dorset and the Jet Rock of Yorkshire, in: *Marine Clastic Sedimentology*, 172–189, edited
 739 by: J.K., Legett, G., Zauffa, 1987.



- 740 Nitychoruk, J. Welc, F.: Janiki Wielkie. Środowisko Fizyczne – geograficzne, in: Katalog
 741 Grodzisk Warmii i Mazur, tom 2, 153 – 155, edited by: Kobyliński, Z., Warszawa, 2017.
- 742 Noryśkiewicz, B.: Lake Steklin - a reference site for the Dobrzyń-Chełmno Lake District,
 743 N Poland, Report on palaeoecological studies for the IGCP-Project No. 158B, Acta
 744 Palaeobot., 22(1), 65-83, 1982.
- 745 Noryśkiewicz A. M.: Historia roślinności i osadnictwa Ziemi Chełmińskiej w późnym
 746 holocenie, Studium palinologiczne, Toruń, 2013.
- 747 Noryśkiewicz, B.: History of vegetation during the Late-Glacial and Holocene in Brodnica
 748 Lake District in light of pollen analysis of Lake Strażym deposits, Acta Palaeobot., 27(1),
 749 283-304, 1987.
- 750 Noryśkiewicz, B., Ralska-Jasiewiczowa, M.: Type region P-w: Dobrzyń-Olsztyn lake
 751 District, Acta Palaeobotanica 29(2), 85-93, 1989.
- 752 Ojala, A.E.K., Kosonen, E., Weckström, J., Korkonen, S., Korhola, A.: Seasonal formation
 753 of clastic-biogenic varves: the potential for palaeoenvironmental interpretations, GFF,
 754 Special issue: Varve Genesis Chronol., Paleoclimate 135 (3/4), 237-247, 2013.
- 755 Pawlikowski M., Ralska-Jasiewiczowa M., Schönborn W., Stupnicka E., Szeroczyńska K.:
 756 Woryty near Gietrzwałd, Olsztyn Lake District, NE Poland - history and lake development
 757 during the last 12000 years, Acta Palaeobotanica 22(1), 85-116, 1982.
- 758 Peck, J. A., King, J. W., Colman, S. M., Kravchinsky, V. A.: 1994. A rock magnetic record
 759 from lake Baikal, Syberia: Evidence for Late Quaternary climate change, Earth. Planet. Sci.
 760 Lett., 122, 221-238, 1994.
- 761 Rabiega, K., Rutyna, M., Wach, D.: Janiki Wielkie. Badania Archeologiczne, w: Katalog
 762 Grodzisk Warmii i Mazur, tom 2. Warszawa, 155 – 174, edited by: Kobyliński, Z.,
 763 Warszawa, 2017.
- 764 Ralska-Jasiewiczowa M.: Type region P-x: Masurian Great Lake Dystrykt. Acta
 765 Palaeobotanica 29(2), 95-100, 1989.
- 766 Ralska-Jasiewiczowa M., Latałowa A.: Poland, in: Palaeoecological events during the Last
 767 15,000 years: Regional Synthesis of Palaeoecological Studies of Lakes and Mires in
 768 Europe, 403-472, edited by: Berglund, B.E., Birks H.J.B., Ralska-Jasiewiczowa, M.,
 769 Wright H.E., John Wiley & Sons: Chichester, 1996.



- 770 Ralska-Jasiewiczowa M, Goslar T, Madeyska T, Starkel L.: Lake Gościąg, Central Poland,
 771 a monographic study, W. Szafer Institute of Botany, Polish Academy of Sciences, Kraków,
 772 1998.
- 773 Sageman B.B., Lyons T.W.: Geochemistry of fine-grained sediments and sedimentary
 774 rocks, in: Treatise on Geochemistry, edited by: Holland, H.D., Turekian, K.K., Pergamon,
 775 Oxford, 115-158, 2003.
- 776 Sambuelli, L., Silvia, S.: Case study: A GPR survey on a morainic lake in northern Italy for
 777 bathymetry, water volume and sediment characterization, Journal of Applied
 778 Geophysics 81, 48-56, 2012.
- 779 Sambuelli, L., Calzoni, C., Pesenti, M.: Case history: Waterborne GPR survey for
 780 estimation bottom-sediment variability: A survey on the Po River, Turin, Italy, Geophysics
 781 74, 95–102, 2009.
- 782 Sandgren, P., Snowball, I.: Application of mineral magnetic techniques to Paleolimnology,
 783 in: Tracking environmental change using lake sediments, Physical and geochemical
 784 methods 2, edited by: Last, W., Smol, J., Kluwer Academic Publishers. Netherlands, 2001.
- 785 Smol, J.P., Birks, J.B., Last, W.M.: Tracking Environmental Change Using Lake
 786 Sediments, Terrestrial, Algal and Siliceous Indicators 3, 371, Springer Verlag, 2001.
- 787 Snowball, I. F.: Mineral magnetic properties of Holocene lake sediments and soils from the
 788 Karsa valley, Lappland, Sweden, and their relevance to palaeoenvironmental
 789 reconstruction, Terra Nova 5, 258 – 270, 1993.
- 790 Stankevica, K., Kalnina, L., Klavins, M., Cerina, A., Ustupe, L., Kaup, E.: Reconstruction
 791 of the Holocene Palaeoenvironmental Conditions Accordingly to the Multiproxy
 792 Sedimentary Records from Lake Pilvelis, Latvia, Quaternary International 386, 102-15,
 793 2015.
- 794 Szal M., Kupryjanowicz M., Wyczółkowski M.: Late Holocene changes in vegetation of
 795 the Mrągowo Lakeland (NE Poland) as registered in the pollen record from Lake Sałęt,
 796 Studia Quaternaria, 31(1), 51–60, 2014a.
- 797 Szal M., Kupryjanowicz M., Wyczółkowski M., Tylmann W.: The Iron Age in the
 798 Mrągowo Lake District, Masuria, NE Poland: the Sałęt settlement microregion as an
 799 example of long-lasting human impact on vegetation. Veget. Hist. Archaeobot., 23, 419–
 800 437, 2014b.



- 801 Szczepański, S.: Średniowieczne założenia obronne okolic Zalewa, *Zapiski Zalewskie* 16,
 802 2009.
- 803 Thompson, R., Oldfield, F.: *Environmental magnetism*, Allen and Unwin London, 1986.
- 804 Tiljander, M., Ojala, A.E.K., Saarinen, T., Snowball, I.: Documentation of the physical
 805 properties of annually laminated (varved) sediments at a sub-annual to decadal resolution
 806 for environmental interpretation, *Quat. Int.*, 88 (1), 5-12, 2002.
- 807 Tylmann, W., Szpakowska, K., Ohlendorf, C., Woszczyk, M., Zolitschka, B.: Conditions
 808 for deposition of annually laminated sediments in small meromictic lakes: a case study of
 809 Lake Suminko (northern Poland), *J. Paleolimnol.*, 47 (1), 55-70, 2012.
- 810 Valpola, S.E., Ojala, A.E.K.: Post-glacial sedimentation rate and patterns in six lakes of the
 811 Kokemäenjoki upper watercourse, Finland, *Boreal Environ. Res.*, 11, 195-211, 2006.
- 812 Verosub, K. L., Roberts, A. P.: *Environmental Magnetism: past, present and future*, *Journal*
 813 *of Geophysical Research* 100, 2175-2192, 1995.
- 814 Wacnik A, Tylmann W, Bonk A et al., Determining the responses of vegetation to natural
 815 processes and human impacts in north-eastern Poland during the last millennium:
 816 Combined pollen, geochemical and historical data, *Vegetation History and Archaeobotany*.
 817 Epub ahead of print 17 March. DOI: 10.1007/s00334-016-0565-z, 2016.
- 818 Wacnik A., Kupryjanowicz M., Mueller-Bieniek A., Karczewski M., Cywa K.: The
 819 environmental and cultural contexts of the late Iron Age and medieval settlement in the
 820 Mazurian Lake District, NE Poland: combined palaeobotanical and archaeological data,
 821 *Veget. Hist. Archaeobot.*, 23, 439–459, 2014.
- 822 Welc, F.: Lake sediments and geoarchaeology (editorial), *Studia Quaternaria* 34(1), 3-8,
 823 2017.
- 824 Welc, F.: Geoarchaeological evidence of late and post-Antiquity (5th-9th c. AD) climate
 825 changes recorded at the Roman site in Plemići Bay (Zadar region, Croatia), *Studia*
 826 *Quaternaria* 36, no. 1, 3–17, 2019.
- 827 Wetzel, R.G.: Past productivity: paleolimnology, in: *Limnology. Lake and River*
 828 *Ecosystems*, third ed., edited by: Wetzel, R.G., Elsevier, Oxford, 785-804, 2001.
- 829 Wilkinson, A.N., Zeeb, B.A., Smol, J.P.: *Atlas of chrysophycean cysts*, Kluwer Academic
 830 Publishers, Dordrecht, 2002.



831 Williams, D.M., Round, F.E.: Revision of the genus *Fragilaria*, *Diatom Research* 2, 267–
 832 288, 1987.

833 Wirth S.B., Gilli A., Niemann H., Dahl T.W., Ravasi D., Sax N., Hamann Y., Peduzzi R.,
 834 Peduzzi S., Tonolla M., Lehmann M.F., Anselmetti F.S.: Combining sedimentological,
 835 trace metal (Mn, Mo) and molecular evidence for reconstructing past water-column redox
 836 conditions: the example of meromictic Lake Cadagno (Swiss Alps), *Geochimica et*
 837 *Cosmochimica Acta*, 120, 220-238, 2013.

838 Witkowski, A., Lange-Bertalot, H., Metzeltin, D.: *Diatom flora of marine coasts, I.*
 839 *Iconographia Diatomologica* 7, 1–925, 2000.

840 Zachowicz J., Kępińska U.: The palaeoecological development of Lake Družno (Vistula
 841 Deltaic Area), *Acta Palaeobotanica* 27(1), 227-249, 1987.

842 Zachowicz J., Przybyłowska-Lange W., Nagler J.: The Late-glacial and Holocene
 843 vegetational history of the Żuławy region, N Poland, A. Biostratigraphic study of Lake
 844 Družno sediments, *Acta Palaeobotanica* 22(1), 141-161, 1982.

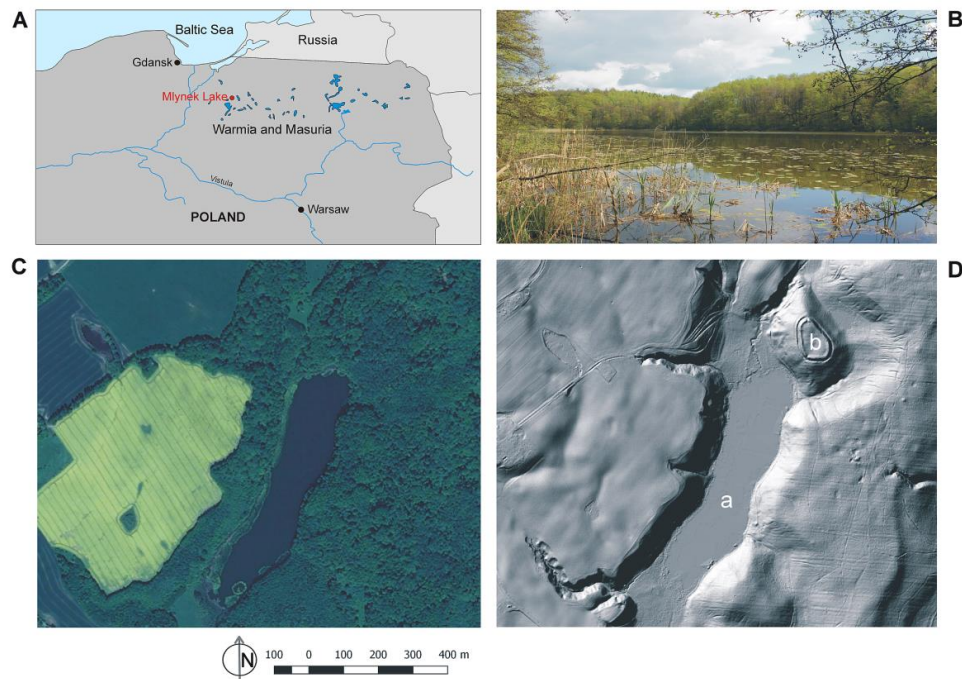
845 Zalat, A., Welc, F., Nitychoruk, J., Marsk, L., Chodyka, M., Zbucki, Ł.: Last two millennia
 846 water level changes of the Młynek Lake (Northern Poland) inferred from diatoms and
 847 chrysophyte cysts record, *Studia Quaternaria* 35/2, 77 – 89, 2018.

848 Zolitschka, B.: Varved lake sediments, in: *Encyclopedia of Quaternary Science*, edited by:
 849 Elias, S.A., Elsevier, Amsterdam, 3105-3114, 2007.

850
 851
 852
 853
 854
 855
 856
 857
 858
 859
 860
 861

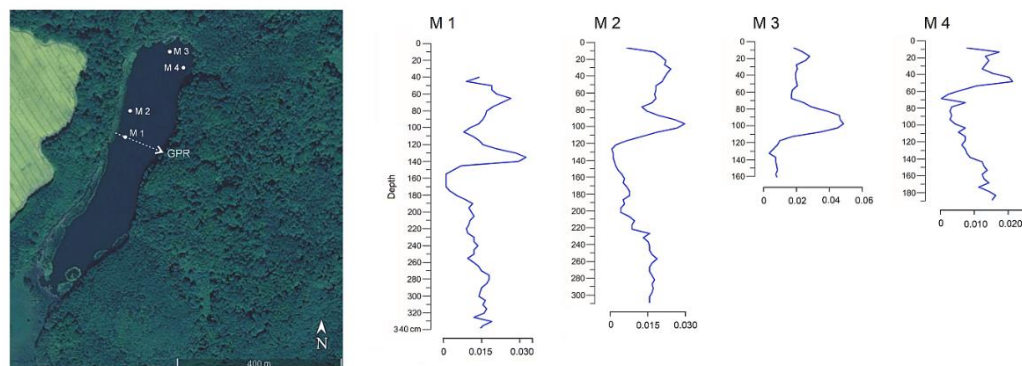


862



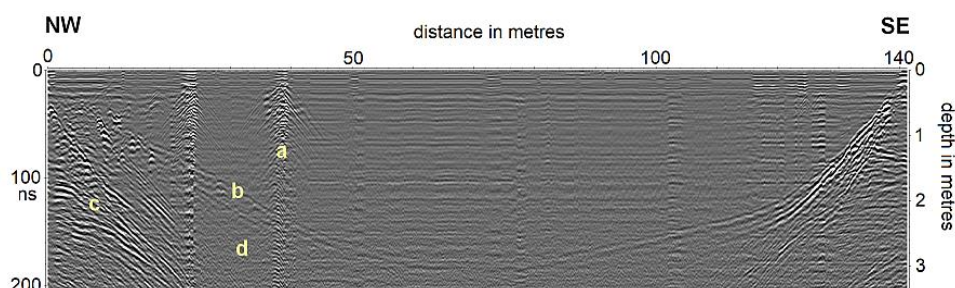
863

864 Fig. 1. A-location of the Mlynek Lake in the Warmia and Mazury Region (north-eastern Poland) (Drawing; Fabian
865 Welc). B-view of the Mlynek Lake from the north-west (Photo: Fabian Welc), C-satellite image of the lake (open
866 source: ©Google Earth : www.google.com/intl/pl/earth/). D-LIDAR image of the lake: a-lake basin, b-Janiki Wielkie
867 archaeological site established in early Iron Age (open source: ©Geoportal Poland : www.geoportal.gov.pl/).

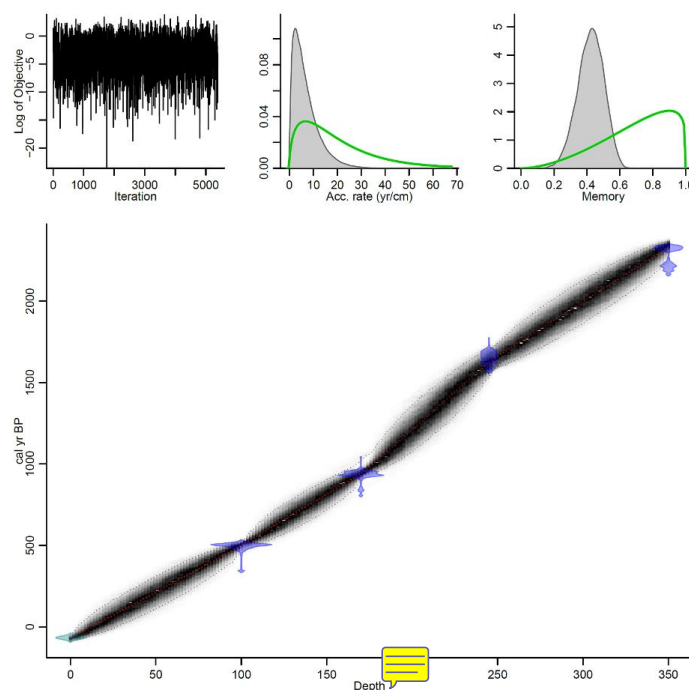


868

869 Fig. 2. Mlynek Lake: A-location of drillings M 1-4 and transect of GPR sounding (open source: Google Earth© :
870 www.google.com/intl/pl/earth/). B-results of magnetic susceptibility measurements of the cores M 1-4 (Drawing:
871 Fabian Welc).



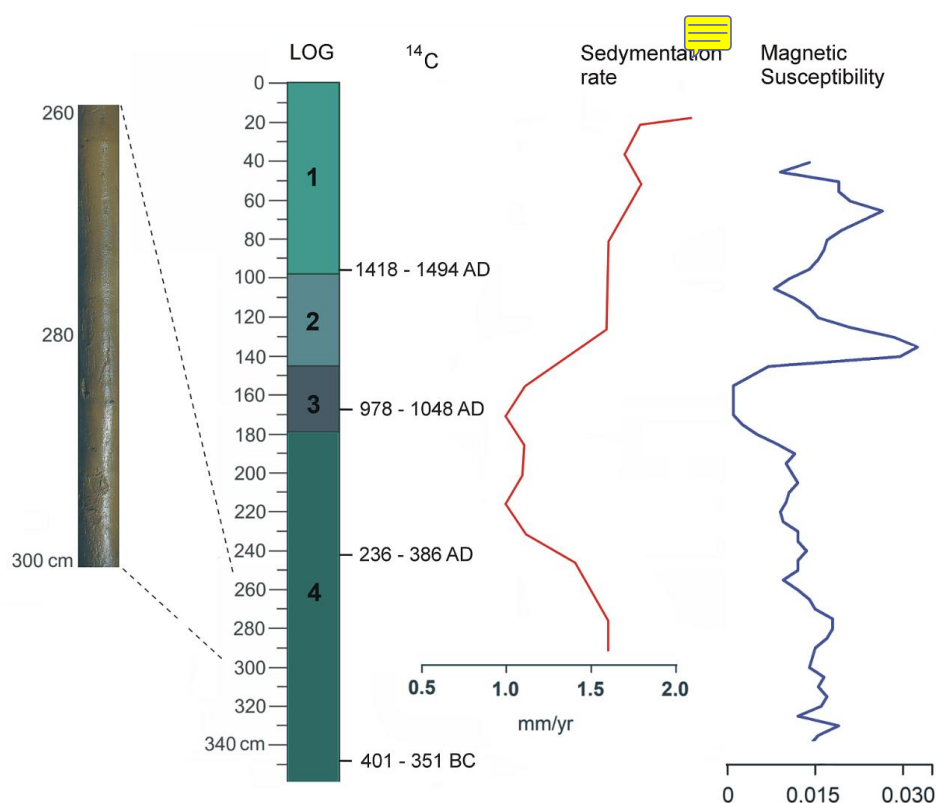
872
 873 Fig. 3. GPR reflection profile across the Mlynek Lake (cf. Fig. 2). a-drilling M-1. b-upper boundary of the so-called
 874 hard bottom c-stratified glaciofluvial sandy-gravel beds beneath the lake sediments. d-attenuation zone of
 875 electromagnetic waves connected with occurrence of organic sediment (gyttja) (measurements, processing and
 876 interpretation: Fabian Welc).
 877
 878



879
 880 Fig. 4. Age-depth model of the core M-1 from the Mlynek Lake. Good runs of a stationary distribution are shown in
 881 the upper left panel, green curves and grey histograms in the upper middle panel present distributions for the sediment
 882 accumulation rate and memory is indicated in the right panel. The main bottom panel shows the calibrated ^{14}C dates
 883 (transparent blue) and the age-depth model (darker gray areas) which are indicating calendar ages. Grey stippled lines
 884 show 95% confidence intervals and the red curve shows the 'best' model based on the weighted mean age for each
 885 depth. The model was created by F. Welc using the open Bacon software (Blaauw and Christen, 2011).

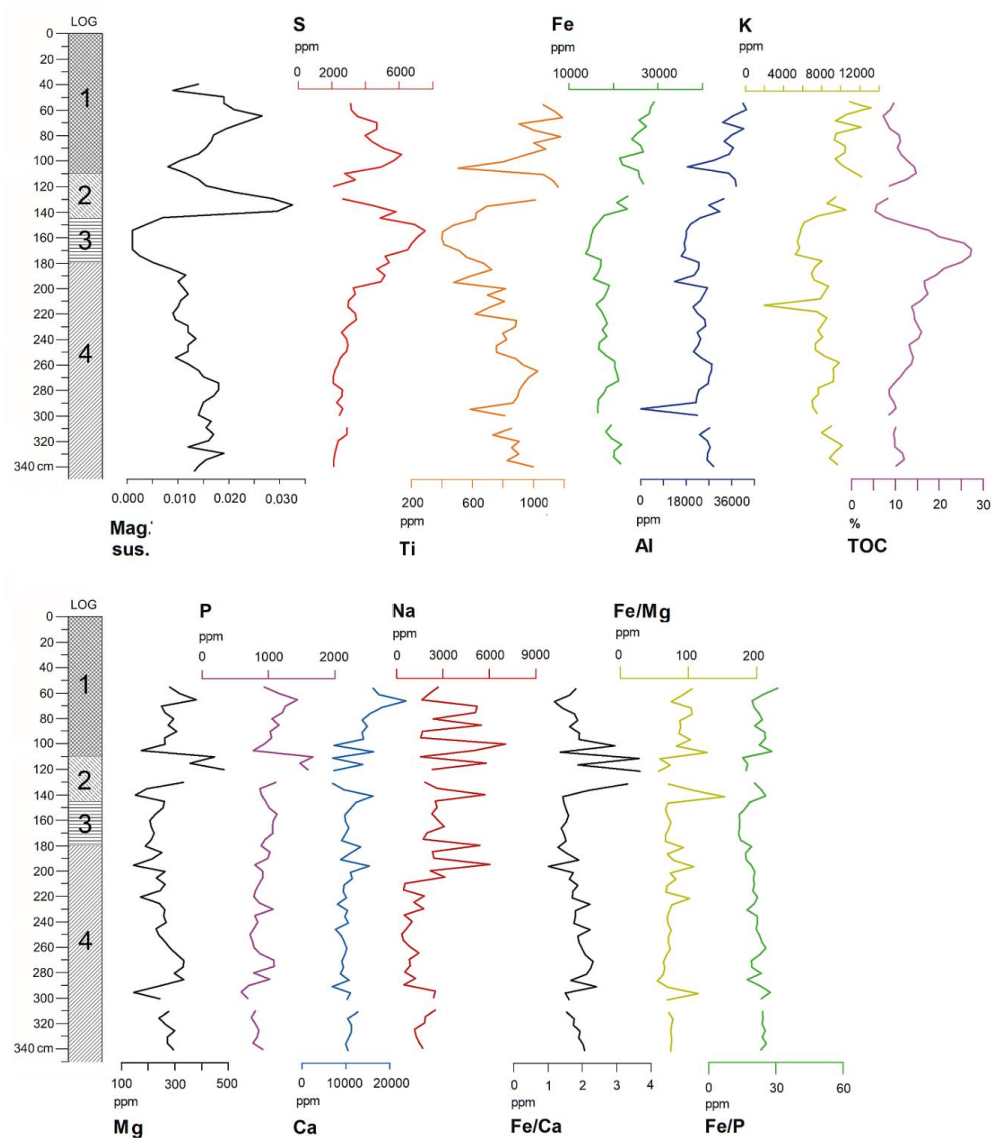


886
887
888
889
890
891
892



893
894
895
896
897

Fig. 5. Lithology of the M-1 borehole with radiocarbon determinations with 95% confidence, close up-photo of the log at 2.6-3.0 m depth and sedimentary rate (mm/year) estimated based on the age/depth model and magnetic susceptibility. Description of LOG: 1-hydrated and detritus type gyttja, 2-very plastic-algal gyttja, 3-gray-brown peaty and detritus gyttja, 4-gray-brown gyttja (Photo and drawing: Fabian Welc).



898

899

900 Fig. 6. Concentration depth curves for selected elements and TOC in the core M-1 of the Mlynec Lake sediments.

901 Description of LOG: 1-hydrated-detritus type gyttja, 2-very plastic - algal gyttja, 3-gray-brown peaty-detritus gyttja,

902 4-gray-brown gyttja (Drawing: Fabian Welc).

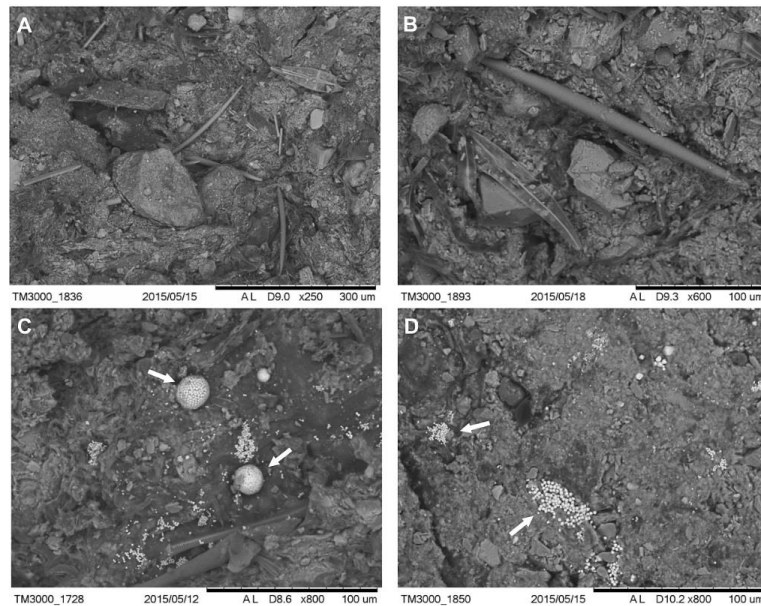


Fig. 7. Core M-1 SEM images showing a general view of the Młynek Lake sediments. Pictures A and B present mostly freshwater diatoms, sponge spicules and plant detritus. Pictures C and D show the characteristic pyrite aggregates, marked by arrows (Photos: Anna Rogóż-Matyszczyk)

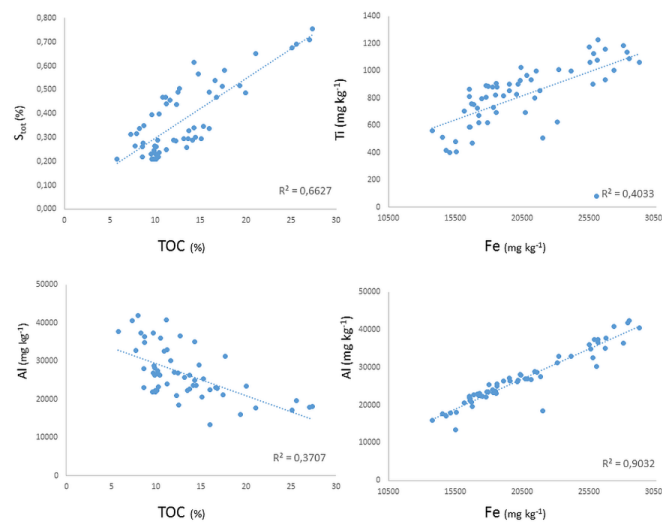
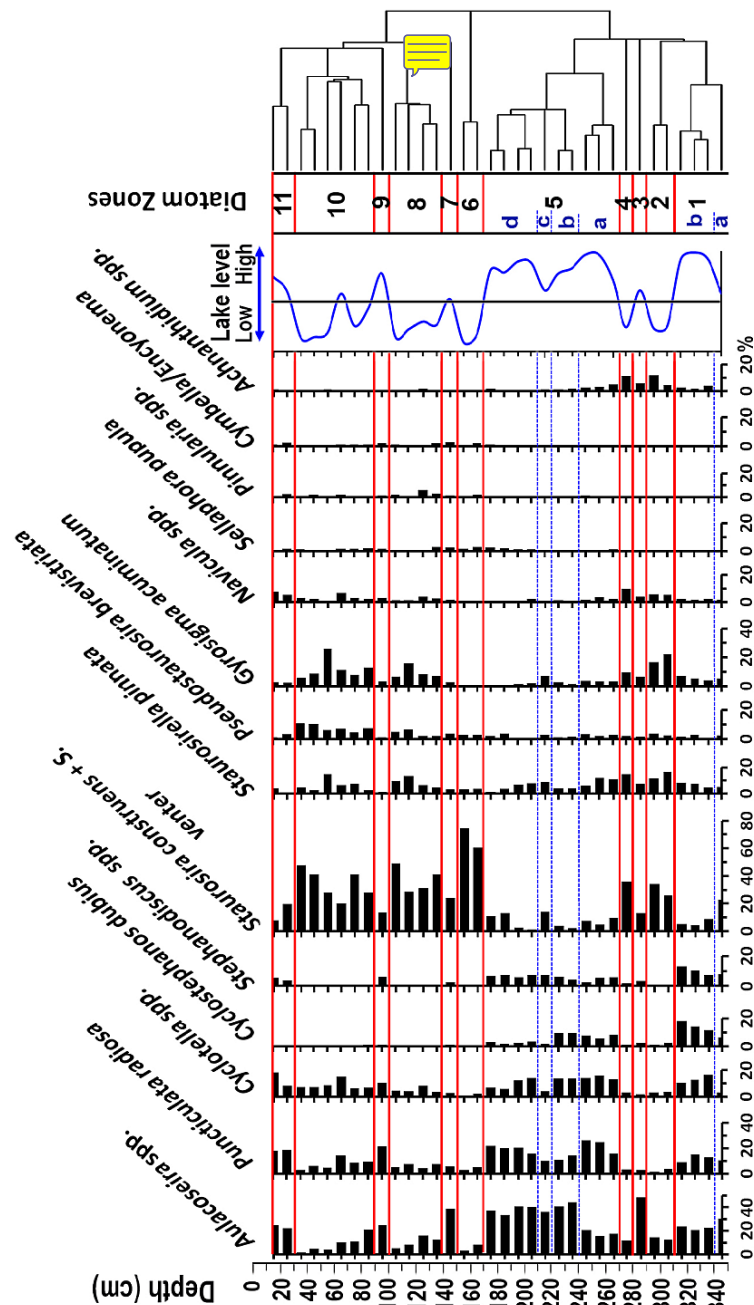
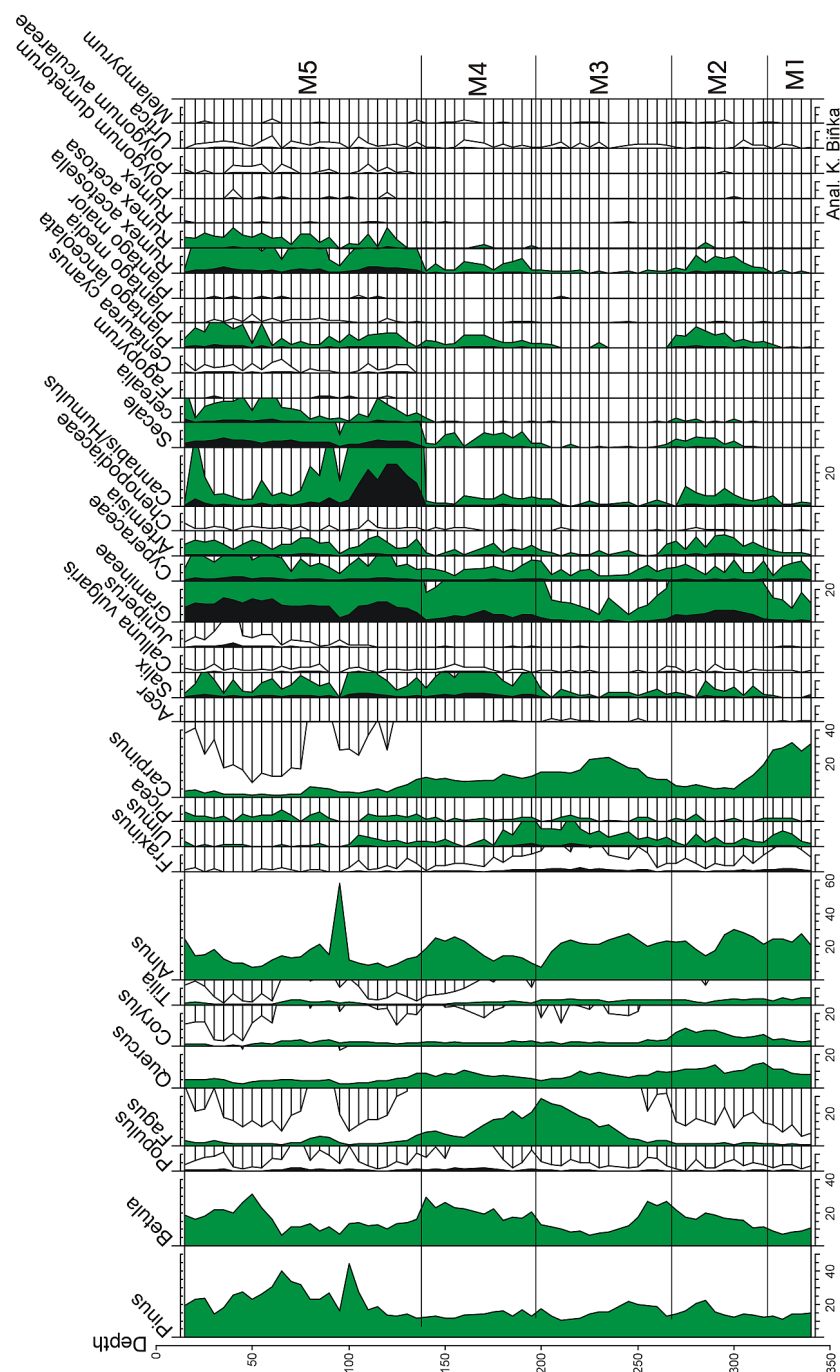


Fig. 8. Scatter plot showing the correlation in the core M-1 between S and TOC, Al and TOC, Ti and Fe, and Ti and Fe. (Drawing: Anna Rogóż-Matyszczyk)



912
913 Fig. 9. Diatom stratigraphy of the core M-1, showing diatom zones and lake phases and relative water level changes
914 estimated on relation between planktonic and benthonic diatom taxa (Interpretation and drawing: Abdelfattah Zalata).



35

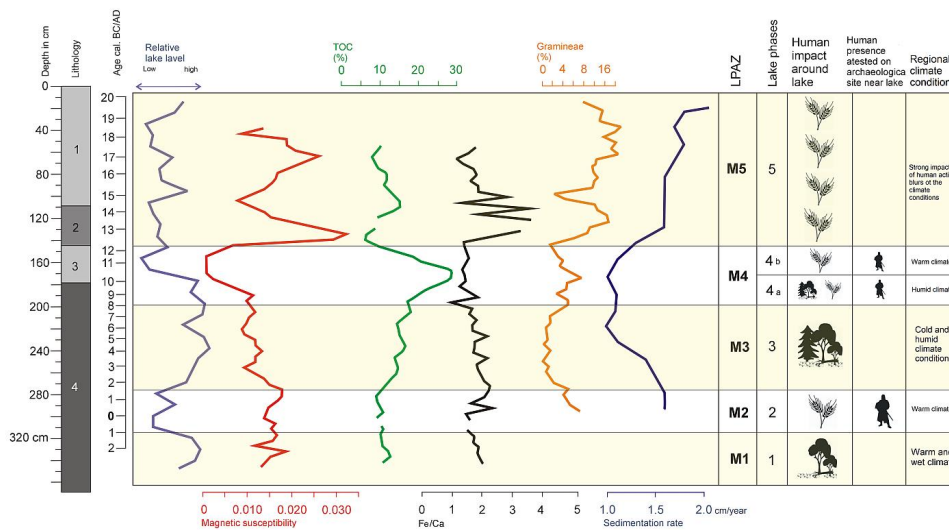


Fig. 11. Diagram with selected palaeoenvironmental proxies including lithology (1-hydrated – detritus type gyttja, 2-very plastic - algal gyttja, 3-gray-brown peaty-detritus gyttja, 4-gray-brown gyttja) with phases of human activity and local climate conditions dominated in the vicinity of the Młynek Lake 9 (Drawing: Fabian Welc).

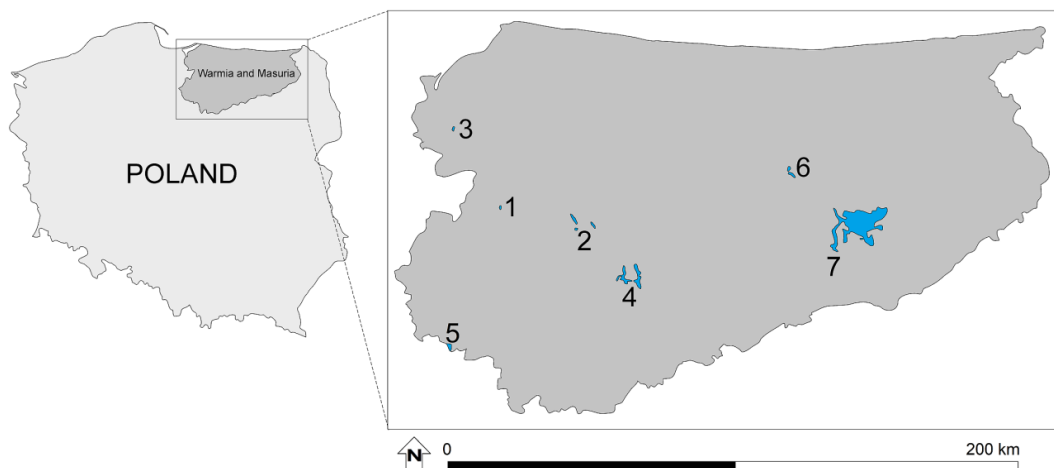


Fig. 12. Map of north-eastern Poland (Warmia and Masuria region) with location of the most important lakes mentioned in text: 1-Młynek Lake, 2-Woryty Lake, 3-Družno Lake, 4-Łańskie Lake, 5-Strażym Lake, 6-Salent Lake, 7-Mikołajki Lake (Drawing: Fabian Welc).



Table 1. List of radiocarbon determinations.

No.	Depth in m	Lab. reference	¹⁴ C yr. BP	Age calibrated 95% probability	Material dated
1	0.95-1.00	S/JW 1/2015/A	435 ± 30	1418 – 1494 AD	Bulk of gyttja
2	1.65-1.70	S/JW 1/2015/B	1015 ± 30	971 – 1048 AD	Bulk of gyttja
3	2.40-2.45	S/JW 1/2015/C	1730 ± 30	236 – 386 AD	Bulk of gyttja
4	3.45-3.50	S/JW 1/2015/D	2275 ± 30	401 – 351 BC	Bulk of gyttja

Table 2. Pearson correlation coefficient (PCC) for selected elements (upper table - A) and proxies (lower table - B).

A

	Al	As	Ca	Ce	Cr	Cu	Er	Fe	Ga	La	Li	Mn	Nd	Ni	P	Pb	Pr	Rb	Sc	Sr	U	V	Ti	S	TOC
Al	1.00																								
As	0.37	1.00																							
Ca	0.36	0.12	1.00																						
Ce	0.00	0.61	-0.29	1.00																					
Cr	0.17	-0.05	0.67	-0.08	1.00																				
Cu	0.63	0.24	0.32	-0.20	0.05	1.00																			
Er	0.39	-0.03	-0.17	0.26	-0.07	-0.15	1.00																		
Fe	0.95	0.39	0.52	-0.05	0.29	0.59	0.34	1.00																	
Ga	0.08	-0.36	0.71	-0.54	0.73	0.04	0.01	0.23	1.00																
La	0.15	0.67	0.13	0.44	-0.01	0.01	-0.02	0.22	-0.21	1.00															
Li	0.33	0.35	0.19	0.01	-0.01	0.50	-0.07	0.29	-0.04	0.05	1.00														
Mn	0.46	0.38	-0.35	0.45	-0.38	0.07	0.50	0.38	-0.61	0.30	0.10	1.00													
Nd	0.06	0.58	-0.24	0.95	-0.05	-0.22	0.31	0.02	-0.53	0.43	-0.03	0.52	1.00												
Ni	0.15	-0.01	0.62	-0.01	0.99	0.03	-0.05	0.27	0.66	0.03	-0.01	-0.35	0.02	1.00											
P	0.49	0.14	0.02	-0.15	-0.23	0.21	0.26	0.47	-0.14	0.20	0.12	0.69	-0.06	-0.26	1.00										
Pb	0.41	0.47	-0.05	0.45	-0.18	-0.09	0.30	0.42	-0.45	0.31	0.10	0.71	0.57	-0.16	0.43	1.00									
Pr	0.65	0.45	0.07	0.44	0.07	0.01	0.58	0.66	-0.20	0.28	0.13	0.72	0.56	0.10	0.45	0.85	1.00								
Rb	0.13	-0.19	0.68	-0.22	0.79	-0.13	0.08	0.30	0.81	-0.09	-0.09	-0.34	-0.13	0.73	-0.06	0.02	0.22	1.00							
Sc	0.54	0.85	0.06	0.65	-0.02	0.22	0.14	0.52	-0.44	0.49	0.28	0.57	0.69	0.03	0.19	0.65	0.67	-0.19	1.00						
Sr	0.40	0.90	0.11	0.72	-0.03	0.21	0.02	0.38	-0.47	0.56	0.27	0.45	0.73	0.02	0.06	0.57	0.54	-0.21	0.94	1.00					
U	0.38	0.33	-0.45	0.58	-0.29	-0.02	0.51	0.26	-0.65	0.19	0.08	0.83	0.64	-0.22	0.35	0.66	0.73	-0.36	0.61	0.51	1.00				
V	0.82	0.15	0.72	-0.30	0.45	0.50	0.27	0.91	0.56	0.06	0.23	0.05	-0.23	0.39	0.34	0.22	0.45	0.55	0.24	0.11	-0.09	1.00			
Ti	0.75	0.47	-0.12	0.42	-0.28	0.34	0.54	0.64	-0.48	0.23	0.21	0.78	0.46	-0.27	0.43	0.68	0.73	-0.28	0.70	0.58	0.70	0.38	1.00		
S	-0.12	-0.18	0.22	-0.70	-0.06	0.18	-0.61	-0.06	0.25	-0.17	-0.01	-0.41	-0.70	-0.10	0.17	-0.28	-0.40	0.05	-0.35	-0.33	-0.48	0.06	-0.47	1.00	
TOC	-0.56	-0.24	-0.24	-0.21	-0.18	-0.27	-0.40	-0.58	-0.13	-0.19	-0.12	-0.25	-0.23	-0.17	0.00	-0.26	-0.46	-0.22	-0.34	-0.26	-0.21	-0.52	-0.47	0.40	1.00

B

	Al	Ca	Fe	Mn	P	Ti	Fe/Ca	Mn/Fe	Fe/Mn	Fe/P	Th/U
Al	1										
Ca	0.36	1.00									
Fe	0.95	0.52	1.00								
Mn	0.46	-0.35	0.38	1.00							
P	0.49	0.02	0.47	0.69	1.00						
Ti	0.75	-0.12	0.64	0.78	0.43	1.00					
Fe/Ca	0.34	-0.60	0.24	0.67	0.39	0.51	1.00				
Mn/Fe	-0.27	-0.72	-0.39	0.69	0.31	0.27	0.44	1.00			
Fe/Mn	0.08	0.68	0.19	-0.50	-0.24	-0.42	-0.28	-0.59	1.00		
Fe/P	0.38	0.55	0.47	-0.37	-0.52	0.05	-0.15	-0.71	0.61	1.00	
Th/U	-0.06	0.44	0.09	-0.15	0.14	-0.09	-0.33	-0.26	0.27	-0.05	1.00