

Interactive comment on “Glacier surface mass balance modeling in the inner tropics using a positive degree-day approach” by L. Maisincho et al.

L. Maisincho et al.

lmaisincho@inamhi.gob.ec

Received and published: 31 August 2016

Dear Reviewer 1,

In the supplement you can find the response (version .pdf).

Please also note the supplement to this comment:

<http://www.the-cryosphere-discuss.net/tc-2016-105/tc-2016-105-AC1-supplement.pdf>

Interactive comment on The Cryosphere Discuss., doi:10.5194/tc-2016-105, 2016.

Printer-friendly version

Discussion paper



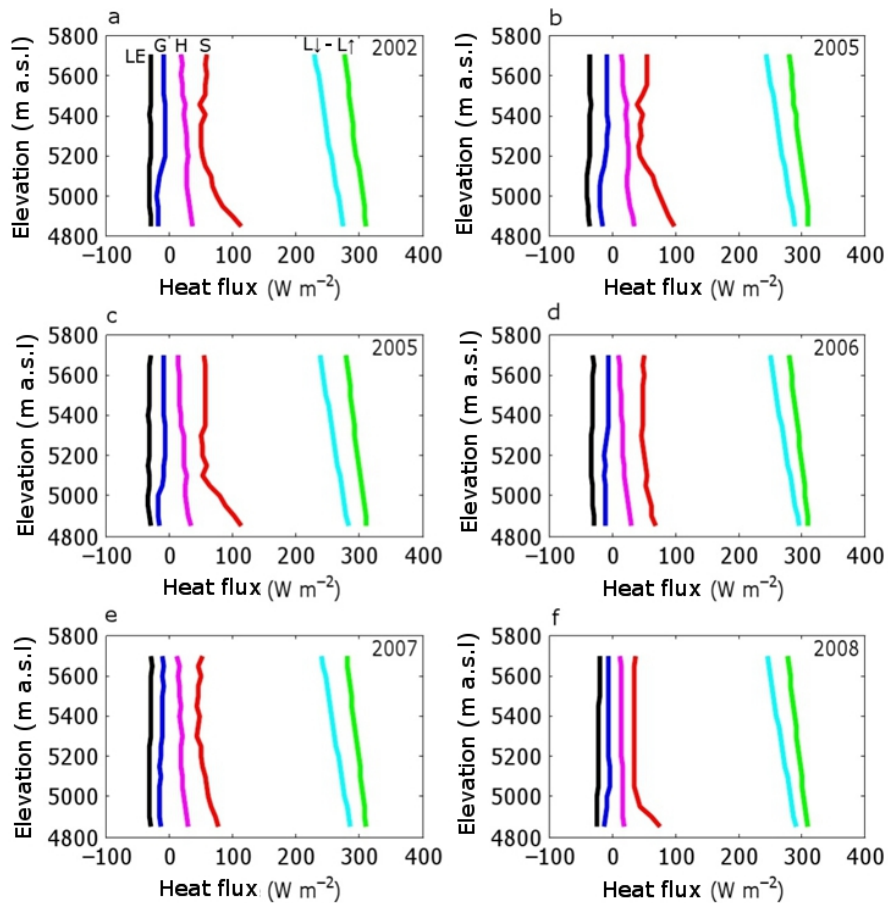


Fig. 1.

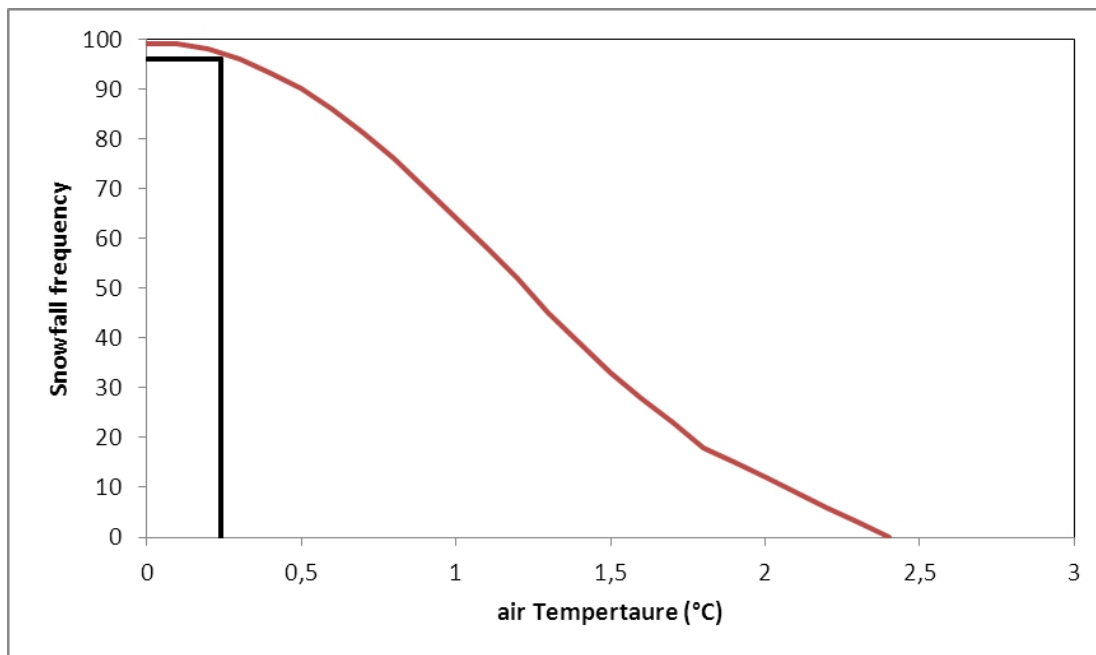


Fig. 2.

[Printer-friendly version](#)

[Discussion paper](#)



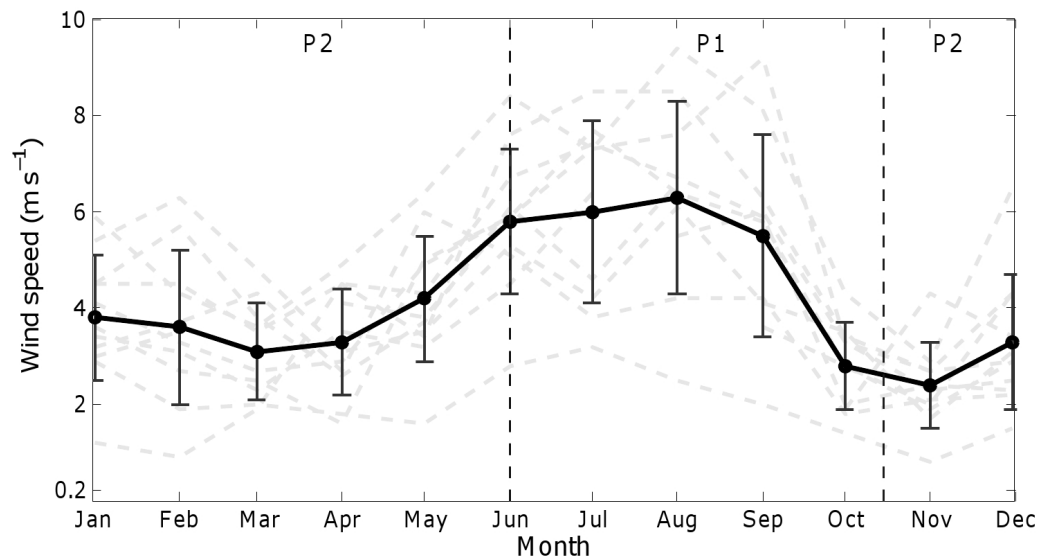
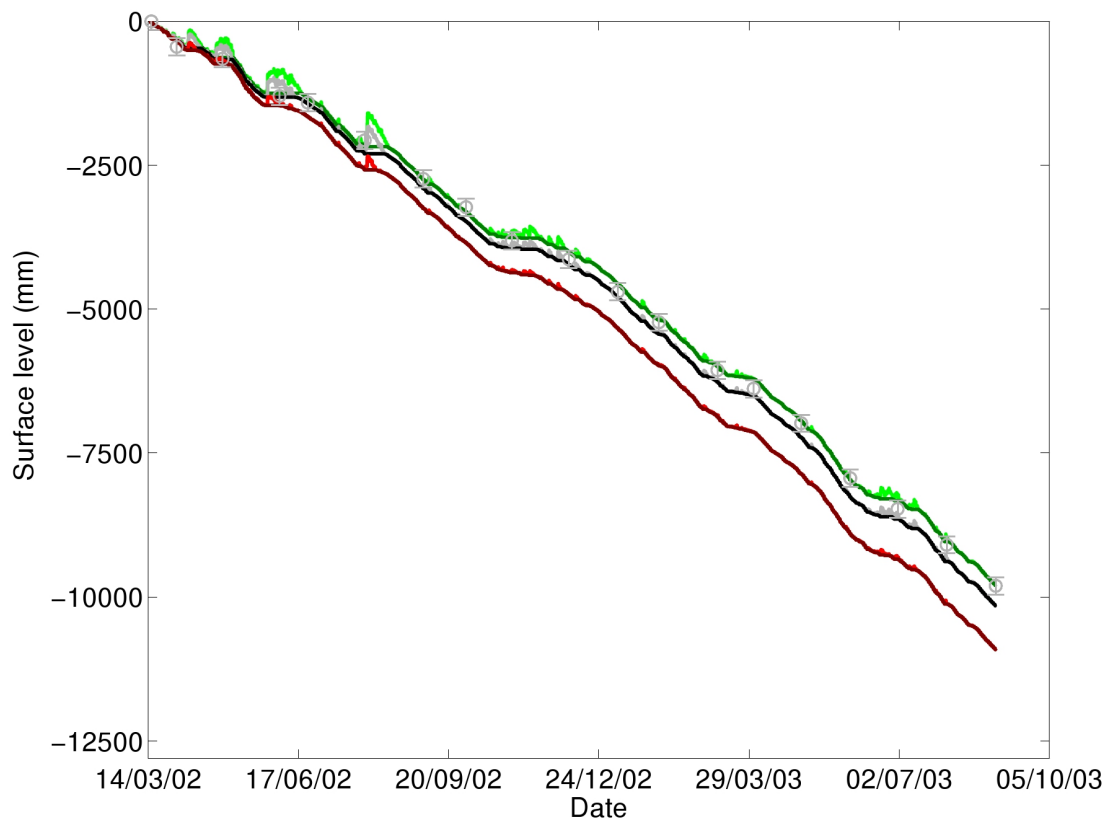


Fig. 3.

[Printer-friendly version](#)[Discussion paper](#)

[Interactive comment](#)**Fig. 4.**[Printer-friendly version](#)[Discussion paper](#)