

Interactive comment on “Regional CO₂ inversions with LUMIA, the Lund University Modular Inversion Algorithm, v1.0” by Guillaume Monteil and Marko Scholze

Guillaume Monteil and Marko Scholze

guillaume.monteil@nateko.lu.se

Received and published: 4 October 2019

There is an error with Figure 9 of the manuscript (it shouldn't be identical as Figure 6!). Please find below the correct figure.

Interactive comment on Geosci. Model Dev. Discuss., <https://doi.org/10.5194/gmd-2019-227>, 2019.

Printer-friendly version

Discussion paper



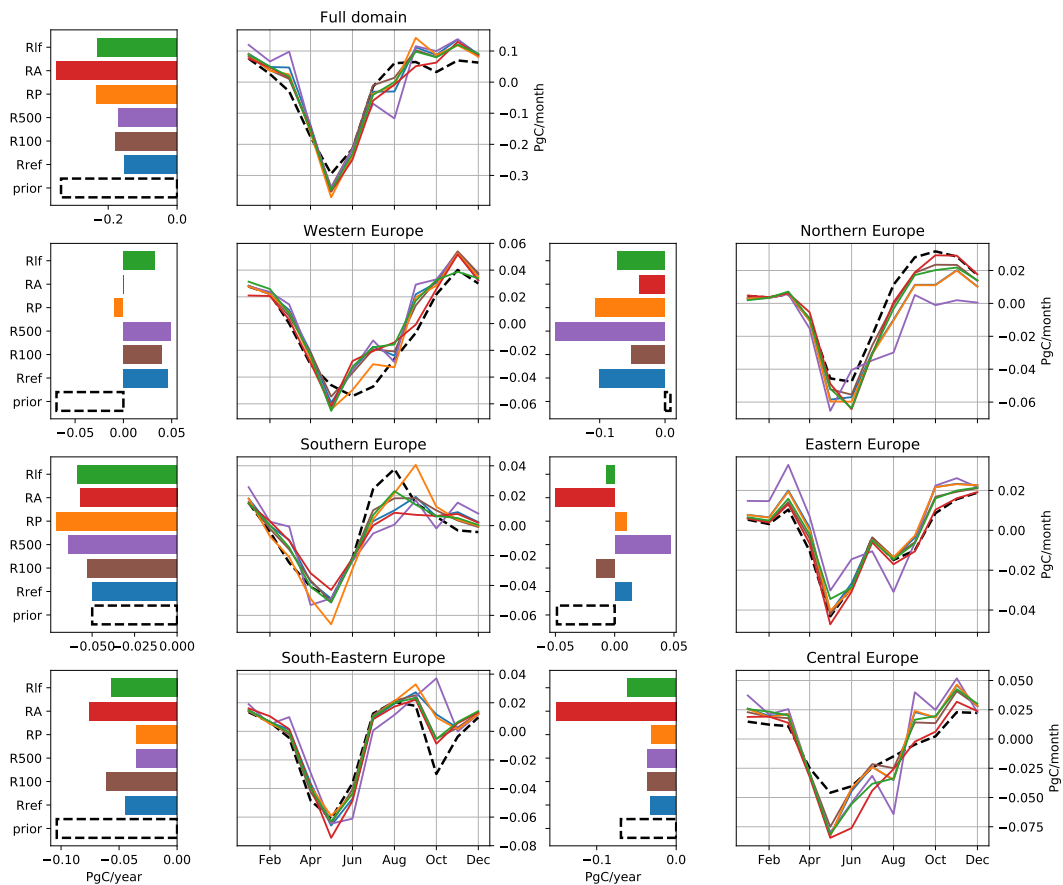


Fig. 1. Annual (bar plots) and monthly (line plots) prior and posterior fluxes aggregated on the entire domain (upper row) or in smaller regions.

Printer-friendly version

Discussion paper

