

Response to Referee 2.

Mikko Auvinen, Leena Järvi, Üllar Rannik, Antti Hellsten, Timo Vesala

June 26, 2017

Referee #2 comments

All page and line numbers refer to the *original* manuscript.

- (1) **Referee comment:** How well can one determine the \bar{w} at the target volume and the uncertainty associated with it since this affects the uncertainty in the footprint through Eqs. (4) and (5). The authors argue that a well-defined value of \bar{w} cannot be determined at the target site for reasons discussed on pages 9 (lines 10 - 21) and 13 (lines 24 - 33), and that this limitation leads to the negative bias in the far-field footprint (Fig. 5). They go on to develop the far-field correction approach (pages 13 to 15), which involves a correction coefficient c_{ijk} applied to the original \bar{w} .

I believe that the authors should provide further information to quantify the uncertainty in \bar{w} at the target site (volume) and also upstream of it. In particular, they should compute and provide: \bar{w} , σ_w , and the uncertainty in \bar{w} (in a statistical sense) from their numerical wind field data: 1) over the urban landscape upstream of the target site but at the same height (or over the same heights) as the target volume [an areal average over the upstream domain or volume using a few heights to match those of the target volume and extending from the leading edge of the city, $x \approx 2$ km (Fig. 2), to the Hotel Torní], and 2) over the target volume. The difference in the raw w values over the target volume (larger) and upstream area (smaller) presumably should lead to a larger \bar{w} and greater variance (σ_w^2) over the target volume, fewer number of numerical data points, and greater uncertainty in \bar{w} over the target volume (e.g., uncertainty estimated as some factor λ depending on the w PDF times σ_w / \sqrt{N} , N being the number of points).

Furthermore, it would be useful to compute the subgrid-scale (sgs) turbulent kinetic energy (TKE, E_s) and the LES resolved scale TKE (E_r), and their ratio or an sgs rms velocity, $\sigma_{sgs} = (2/3)E_s$ and the ratio, σ_{sgs}/σ_{wr} . This ratio would quantify the importance or not of the sgs velocities in determining the footprint; as with the \bar{w} , σ_w , etc., this should be done for both the upstream area/volume and the target volume to make the distinction if there is one.

Author's response: This matter, concerning the problematic coordinate rotation applied to finite sub-volumes, became resolved while investigating the Referee #1 comment (4). Please, refer to the associated author's reply.

The questions raised here concerning the uncertainty in \bar{w} were carefully considered in the preparation of the LES simulations. However, to reduce the amount of data output, only limited time-resolved datasets were written out while the 45 min time-averaged datasets using in the footprint computations were generated 'on the fly' within PALM during the simulation without specifically storing the individual snapshots. On these mean flow datasets statistics are not available. But, for visualization purposes we have stored two partially coinciding datasets that can be used to estimate some of the desired uncertainties. The first dataset (D1) is a $(10\text{ m})^3$ cube discretized at 1 m resolution centered above Hotel Torní (in a similar manner as the target box) containing velocity data gathered over 15 min at 1 Hz. See Fig. 1. The second dataset (D2) is a large xz -plane cutting across the center of the entire LES domain and through the Hotel Torní building containing velocity data over 45 min. However, this dataset is rather coarse for its spatial resolution is 4 m and the sampling rate 0.25 Hz. Figure 2 below illustrates a relevant part of this xz -plane and exemplifies a line along which velocity related statistics are gathered.

Within the D1 cube the vertical velocity data ranges [min, max] are $\bar{w} = [-0.27, 4.50] \text{ m s}^{-1}$ and $\sigma_w = [0, 1.22] \text{ m s}^{-1}$ whereas for the sample averages (averaged over the cube's volume) become $\langle \bar{w} \rangle = 1.014 \text{ m s}^{-1}$, $\langle \sigma_w \rangle = 0.589 \text{ m s}^{-1}$. We can estimate the standard deviation of the sample mean

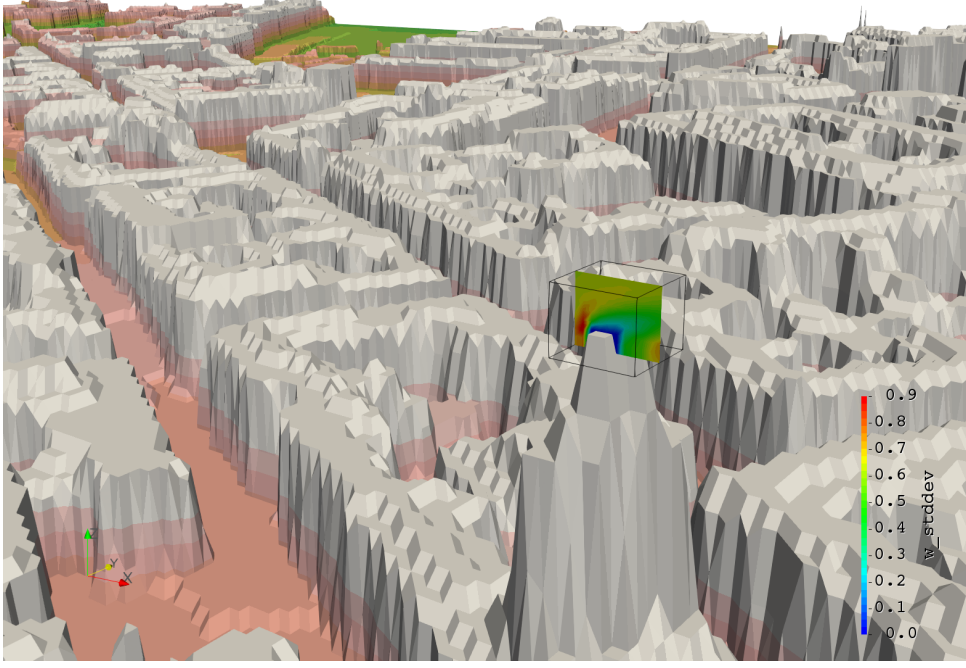


Figure 1: Visualization of $(10\text{ m})^3$ cube discretized at 1 m resolution centered above Hotel Torní. This domain has been used to gather time accurate flow data for visualizations. Here it is used to provide estimates for quantifying the uncertainty in vertical velocity data. The figure depicts a slice through the dataset coloured by σ_w .

(or sampling error) for the 45 min (4 Hz) mean velocity dataset utilized in the footprint computation by using the $\langle \sigma_w \rangle$ values from D1 but specifying $N = 45 \times 60 \times 4 = 10800$ according to the 45 min logging schedule. This yields $\sigma_w / \sqrt{N} = [0, 0.012] \text{ m s}^{-1}$ and $\langle \sigma_w / \sqrt{N} \rangle = 0.0056 \text{ m s}^{-1}$. Because the uncertainty in \bar{w} values used in the footprint computations is so small compared to the changes resulting from taking spatially averaged means $\langle \bar{w} \rangle_{i,j,k}$ over subvolumes larger than one LES grid cell or applying the far field correction (where $|c_{i,j,k} \langle \bar{w} \rangle_{i,j,k} - \langle \bar{w} \rangle_{i,j,k}| \approx 0.1 \text{ m s}^{-1}$), the uncertainty aspect did not enter into the method description. According to Wilczak et al. (2001) a typical sampling error values for a 15-min data runs are ca. 0.01-0.06 which can produce artificial tilt 'corrections' on the order of 0.5 degree. Since our sampling error for the 45 min data is roughly an order of magnitude smaller, the artificial tilt effect is deemed insignificant even when the piecewise post-processing is carried out in accordance with the LES grid resolution. The distributions of mean values and standard deviations obtained from D2 over a 1200 m line upstream of Hotel Torní's EC sensor are shown in Fig. 2 (at the end of the document), but this data is considered most relevant in the context of the last Referee comment. Now that the mechanism for causing the bias in the piecewise processed footprints has been established, and also for our inability to repeat this extremely expensive simulation to collect the requested information we do not have (e.g. subgrid scale and resolved scale TKE and upwind data), we wish to submit that the method description could be published without presenting the requested analysis.

Author's changes in manuscript: The underlying issue here is addressed by the changes associated with the Referee #1 comment (4).

(2) Referee comment: Section 2.3.2. This section is one of the more limiting parts of the paper in being somewhat arbitrary and subjective for generating the final LES-LS footprint. I believe that it is sufficient as an initial approach/procedure. However, for use by other researchers or as a standalone method for generating footprints (by others) for multiple EC sites in a city, a more rigorous, robust, and less subjective approach is necessary.

For example, on page 16, is the $f^{(0)}$ with 4×10^5 particle entries deemed insufficient as a reference footprint, f^{REF} , because there is too much blue (negative footprint value) in the far field of the footprint (Fig. 6)?

Conversely, is $f^{(1)}$ judged to be sufficient and act as the reference because there is less blue? There should be some quantitative method, index, or variable that stipulates the adequacy of the reference (and why); e.g., requiring the far-field negative footprint to be less than some small fraction of the maximum footprint. Such a criteria is used in deciding whether a candidate footprint, $f^{(k)}$, should be included in the final assembly (page 16, lines 31 - 33) with the $\|\Delta f\|_{max}$ "determined according to the case-specific requirements." These requirements should be spelled out.

However, the maximum values, $f_{max}^{(k)}$, associated with these difference maxima, δf_{max} , and the fraction, $\delta f_{max}/f_{max}^{(k)}$, should be given. The $\|\Delta f\|_{max}$ here was chosen from the $f^{(3)}$ value, but it is not clear why. Also, the maximum footprint values in Fig. 6 appear to be about 10^{-6} (bright red), but the $\|\Delta f\|_{max} = 6.24 \times 10^{-3}$ is much larger. I don't understand this.

Author's response: The authors agree that the presented piecewise post-processing method presents a compromise between computational cost and precision. The presented methodology provides a computationally feasible technique to generate complex urban footprints that includes a mechanism to control (or at least monitor) the amount of imprecision in the final result. If the allowed tolerances for such complex footprints are made really strict, under the presented LES-LS framework the prize must be paid by increasing the computational cost by reducing the target volume to a single grid cell. But then again we return back to the problem of concentrating on a particular point \mathbf{x}_M over a building, which cannot be described in high detail by the topography model or the LES grid to begin with. It is our understanding that, even with 1 m LES resolution, it is unreasonable to assign 'analytical' precision requirements for the urban footprint problem. That said, it becomes important that the method provides a flexible way to generate sufficiently converged footprint candidates which contain different levels of imprecision. This provides the user of these footprints a possibility to assess how sensitive the considered application and the deduced conclusions are to the level of inexactness associated with the method. Therefore, the statement "determined according to the case-specific requirements" is not intended to be vague, but genuinely intentional. We are unable to dictate what the accuracy requirements are in all the possible footprint applications. Instead, we believe that it is important that the method for generating an arbitrarily complex footprints offers the possibility to examine the level of inaccuracy in a transparent manner. For example, a standalone method utilizing the piecewise post-processing approach and selective assembly should generate a variety of footprints at different levels of confinement around \mathbf{x}_M – which means varying the number of particle entries in the footprint and, thereby, the level of convergence. An explicit statement concerning the possibility to vary the tolerances in the selective assembly phase for the purpose of assessing the associated impact in the footprint application is added to the manuscript.

In response to the other questions: The requirement that f^{REF} should contain around 10^6 particle entries stems from Hellsten et al. (2015) where it was established that 10^6 is the minimal amount to obtain a resonable footprint in an urban-like situation. In the same article footprints containing 4×10^5 particle entries were shown to exhibit only the near field sufficiently. The computation of relevant 'deltas' between f^{REF} and $f^{(l)}$ necessitates that at least the f^{REF} features a strongly converged near field. If both f^{REF} and $f^{(l)}$ would contain, for instance, $\sim 10^5$ particle entries, the $\|\Delta f^{(l)}\|_{2,\Omega_*}$ values would be contaminated by the noise in the distributions.

The red-white-blue colormap chosen to illustrate the $f^{(l)}$ candidates was intentionally set to have a really small magnitude for max (10^{-6}) and made symmetric to keep white color at zero. This was done in effort to provide a clearer view of the spatial extent of the distributions in hopes that the obtained $\|\Delta f^{(l)}\|_{2,\Omega_*}$ value would reflect the qualitative discrepancy. For instance, our objective is to convey that the spatial pattern of $f^{(5)}$, especially its near field, is also evidently different from f^{REF} . In addition, the colormap manages to reflect the convergence level of the far field with different shades of 'grey' as the noise reduces and the values approach zero (white).

We did experiment with other metrics to assess discrepancies between two footprint candidates, but utilizing local maximum differences δf_{max} proved not useful at all. The obtained urban footprints feature rapid local changes when going from street canyons to roof-tops and when the convergence is not strong, some individual cells in the footprint grid exhibit exceptionally large deltas even though the overall agreement may be good. Therefore we submit that the δf_{max} values do not provide any guidance in the selection.

Author's changes in manuscript: Clarification about the required number of particles and the level of convergence in the footprints according to Hellsten et al. (2015) is added to P12, l.17. An additional statement concerning the maximum allowable discrepancy in the selective assembly is

added on P16, 1.33 and a general observation concerning the rejected contributions is added to P17, 1.4.

- (3) **Referee comment:** page 2, line 4. "... which relates the value of a measurement (of flux or concentration) at location ..." The parenthetical words would make this clearer.

Author's response: Yes, agreed.

Author's changes in manuscript: Change applied to P2, 1.4.

- (4) **Referee comment:** page 2, Eq. (1). It should be made clear here that the footprint, $f(x_M, x')$, has the dimensions inverse of the integration unit(s). In Eq. (1), this is just length (L) since the integration is along a line in the domain, e.g., f could be the crosswind-integrated footprint, f^y , used later. But often, the footprint pertains to an elemental area $dx dy$ (L^2) as in Eq. (4).

Author's response: In Eq. (1) the spatial variable is a vector (bold font type, \mathbf{x}') and the domain Ω is a volumetric domain, whose vertical dimension is collapsed in the presentation. Thus, as the referee correctly stated, here the footprint has the dimensions inverse of the integration unit, thus m^{-3} and m^{-2} after collapsing Ω into a sheet. Indeed, this should be clarified in the text.

Author's changes in manuscript: Clarification added to P2, 1.7.

- (5) **Referee comment:** page 3, lines 8, 9. "...conduct tracer gas experiments, which are nearly impossible to arrange in residential areas." However, this computational framework could be tested in some way in a large wind tunnel such as WOTAM at the University of Hamburg (e.g., Leidl and Schatzmann, 2010). This tunnel with dimensions of $4m \times 3.2m \times 25m$ (width, height, length) has been used to study many aspects of dispersion in large European cities. I would recommend that testing of the LES-LS numerical Helsinki footprint model be tested in some way in such a tunnel. It would give greater credibility to the approach especially when using the approach to suggest/demonstrate limitations in analytical footprint models.

Author's response: We agree completely with the Referee that validation studies are needed for urban LES. Currently we are adopting the best practices from Letzel (e.g., 2007); Letzel et al. (e.g., 2008, 2012); Hellsten et al. (e.g., 2015) while paying a very heavy prize for establishing the best possible inlet boundary conditions and resolving everything at 1 m resolution. However, we are in the process of completing an urban dispersion validation study at WOTAN wind tunnel featuring Hamburg site and are looking for other validation studies where more detailed wind data would be available.

Author's changes in manuscript: We propose no changes.

- (6) **Referee comment:** page 11, line 11. The authors talk generally about the target subvolumes, size, and number, but this should all be guided the size/scale of the turbulent flow structures at the EC sensor site. This was mentioned earlier in the paper, but no specifics were given. For example, on page 9 (line 32), it is merely stated that "the target box reasonably represents the sensor site." Should the target box scale or total volume be of the order of or less than (say some fraction of) the characteristic flow structure dimension/volume at the EC site? If we assume very crudely that the characteristic length scale is $l_c = \kappa z$, with κ being the von Karman constant (0.4) and z is height, $l_c = 24$ m; i.e., for a neutral boundary layer over homogeneous terrain. The characteristic dimension of the sampling volume is $l_{sc} = (l_{sx} \times l_{sy} \times l_{sz})^{1/3} = 12.4$ m, which is half of l_c . I don't know the logic of choosing the l_{sc} in the paper, but requiring it's overall dimension to be less or much less than l_c may be a useful criterion. Clearly, there may be others.

Author's response: We believe that this matter has now been clarified. Please, see author's response to Referee #1 comment (4). The turbulent length scales at the EC site strictly dictate the appropriate subvolume size requiring that, when no far field correction is employed, the subvolume size must adhere to the LES grid spacing. We did observe that further away from the sensor location (i.e. at the edges of the target volume where the mean flow gradients have subdued) the resolution requirement could be relaxed from 1 m to 2 m.

Author's changes in manuscript: Modified the statement on P11, 1.11 to emphasize that the complexity of the flow solution in the vicinity of \mathbf{x}_M dictates the resolution of the subvolumes. Also, the rewriting of Section 2.3.1 addresses this issue as well.

(7) **Referee comment:** page 12, line 19. "distributions" Do you mean individual "footprint" distributions?

Author's response: Yes, the original statement refers to individual footprint distributions. This part has now also been rewritten as a result of the responses to Referee #1.

Author's changes in manuscript: This statement has been replaced.

(8) **Referee comment:** page 14, line 3. "negligibly small offset." But that offset is 20% to 25% of the maximum \bar{f}^y in Fig. 5, and thus is not small.

Author's response: Referring to the sentence "If the footprint distribution plateaus in the far field, this asymptote can be declared as the zero reference level, which deviates from the 'correct' asymptote by a negligibly small offset" the intended meaning is that if a footprint has a far field that has plateaued, but with a large offset (for example 20% to 25%), it is not physically justifiable. Only a near zero far field asymptote is acceptable. Thus, we should impose that the plateaued far field can only occur if it approaches zero. Now, in reality, the footprint asymptote is not exactly zero and therefore a zero-imposed far field deviates from the near-zero far field by a small amount.

Author's changes in manuscript: In hopes to clarify the statement, we changed "can be declared as" into "can be amended to become".

(9) **Referee comment:** page 15, Eq. (9). It might be noted that a similar approach is often used in determining the vertical tilt axis of a sonic anemometer on a meteorological tower; i.e., due to the mounting imprecision and/or possible variability in the sensor vertical axis over time (wind loads, vibrations, etc). Assuming that over a long time record above chosen flat terrain the $\langle \bar{w} \rangle = 0$, the tilt axis (\mathbf{c} or c_{ijk}) (relative vertical velocity to the 3 components fixed coordinates) is chosen by ensuring $\sum_n^N \mathbf{c} \cdot \mathbf{u}_n = 0$ (sum of the vertical velocity components is zero), where n is the measurement (realization or time) index and N is the total number of measurements.

Author's response: Yes, the resemblance is notable. Perhaps not immediately apparent, but worth mentioning.

Author's changes in manuscript: A sentence added to P15, l.12.

(10) **Referee comment:** page 20, lines 8 - 29, Fig. 9. Why is the numerical footprint, \bar{f}^y , so much more peaked than the analytical Korman and Meixner (KM) (2001) model? There are at least two potential reasons for this as suggested by the authors. 1) The real urban terrain/fetch upstream of Hotel Torni is only about 1600 m or about 39% of the total LES domain (4096 m; Fig. 2). The real terrain which is heterogeneous with a marked change in roughness at the upwind edge of the city is accounted for in the LES, whereas the KM presumably assumes homogeneous conditions upstream. These very different mean wind and turbulence fields could possibly be accounted for in the KM model in a crude way (point 9 below). 2) The mean wind and rms lateral turbulence component (σ_v) for the KM model were extracted from the measurements at the top of the Hotel Torni. The authors should repeat the KM calculation using the LES mean wind and σ_v at the height of Hotel Torni. This could be done using both the LES values 1) within the target volume and 2) the upwind U and σ_v values. That is, there should be consistency in the meteorological inputs to the LES-LS and the KM model.

Author's response: Initially the KM model input parameters were taken from the LES solution, but this was changed because we felt that it would be undefendable to utilize data that would not be available under normal circumstances when analytical models would be used. Fortunately, the tower and LES data agrees to a remarkable degree. If we collect LES data from a small cube, say $(2\text{ m})^3$, or a line around \mathbf{x}_M and take the sample average, we get $\sigma_v = 0.72 - 0.74\text{ m s}^{-1}$ and $U = 4.5 - 5.1\text{ m s}^{-1}$ (U changes rapidly over the tower) depending on the method. Comparing these to the tower data $\sigma_v = 0.75\text{ m s}^{-1}$ and $U = 4.86\text{ m s}^{-1}$ while considering that the LES simulation gets its meteorological boundary conditions from Lidar (which only provided us the geostrophic wind and the height of the boundary layer) one gets easily excited. (It's a pity we only have one 'tower' in the simulation domain.)

However, as the referee points out, the σ_v and U values could also be taken from the LES flow field upstream of Hotel Torni. This would certainly provide a more representative description of the flow

conditions above the effective source area. But is this a justifiable approach when the objective is to assess “the potential error that may arise when analytical, closed-form footprint models are applied to urban flux measurements”? One would need to perform high resolution LES analysis (as documented here) or have access to multiple tower measurements in the urban canopy to acquire this information. This brings us to a very relevant topic: How to best utilize analytical footprint models in urban measurement campaigns? As it is in everyone’s best interest (including our’s) to ‘save’ the applicability of analytical models to urban measurements, these considerations naturally will follow and LES-based methods will play a critical role in these investigations. Nevertheless, this publication cannot extend its scope to this important and difficult topic. Devising a technique that allows a real urban footprint to be generated, alone, proved to be a substantial task.

But, since we do have a coarsely resolved (4 m resolution and 0.25 Hz) dataset of a large xz -plane cutting across Hotel Torni, see Fig. 2 below, we can demonstrate the difference that results when upwind values are employed instead. The dataset was intended for visualization purposes, but offers reasonable accuracy for such a large scale investigation. We chose a 1200 m long line (also visible in Fig. 2), which approximately stays 60 m above the ground level, which rises 14 m from the sea shore to Hotel Torni. Computing the line averages gave for $\bar{u} = 6.4 \text{ m s}^{-1}$ (i.e. U) and $\sigma_v = 0.95 \text{ m s}^{-1}$. A juxtaposition of the different KM footprint distributions are shown below in Fig. 3. The effect is visible (with carefully selected colormap) but in the source area fractions the difference amount to only 0.1% in building, road and impervious land cover types while the rest remained unchanged. In the light of this evidence, we submit that these results are not included in this publication.

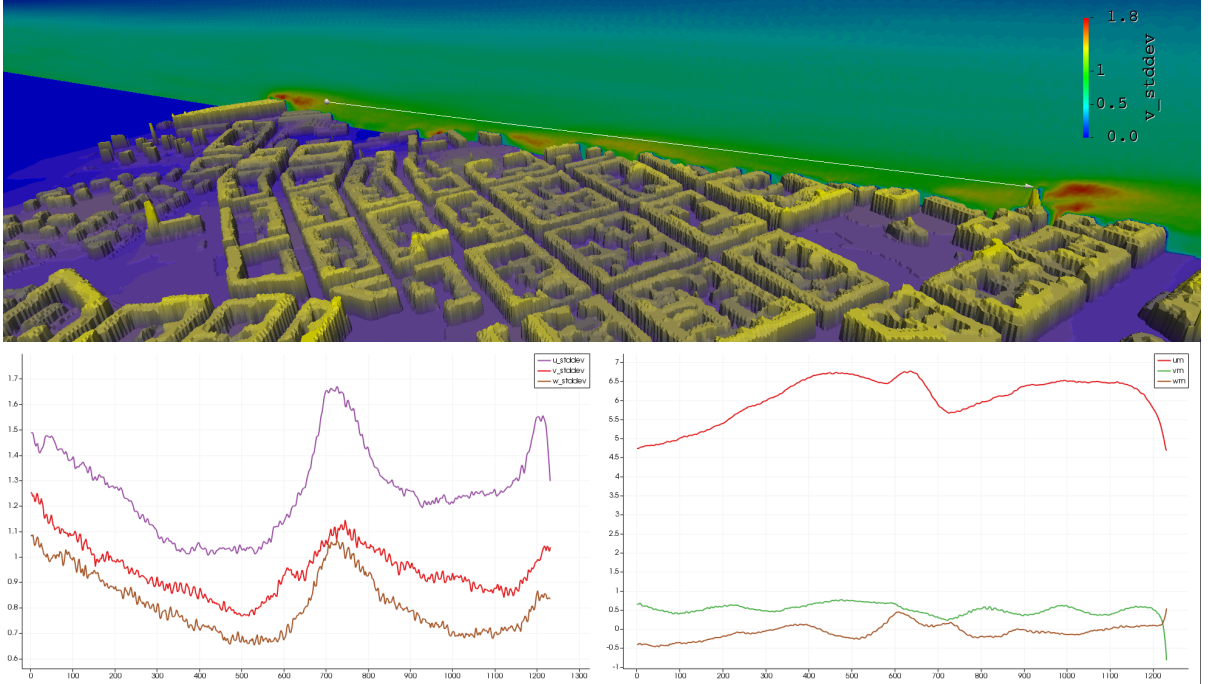


Figure 2: Visualization of a 1200 m line upwind of Hotel Torni over which temporal statistics are plotted. Bottom left: σ_u , σ_v , σ_w . Bottom right: \bar{u} , \bar{v} , \bar{w} .

Author’s changes in manuscript: We propose no changes.

(11) **Referee comment:** For future development of the KM or other analytical footprint models, it would be interesting to run KM or other model for an x-direction terrain inhomogeneity, sea-to-land, with a large increase in roughness at the interface to see if that would give a zeroth order change/improvement in the analytical footprint. [Note, this is not the authors’ responsibility and need not be addressed by them.] Horst and Weil (1994) and perhaps others have shown how a step change in the surface flux can be accommodated. Here, however, it would be necessary to account for a change in the mean wind and turbulence profiles at the land-sea interface. This may be possible to do in a simple way (parameterization) based on an internal boundary layer model characterized by a sudden roughness change (and/or heat flux) (e.g., Brutsaert, 1984; Garrett, 1992) where new wind and turbulence profiles can be developed downwind of the change.

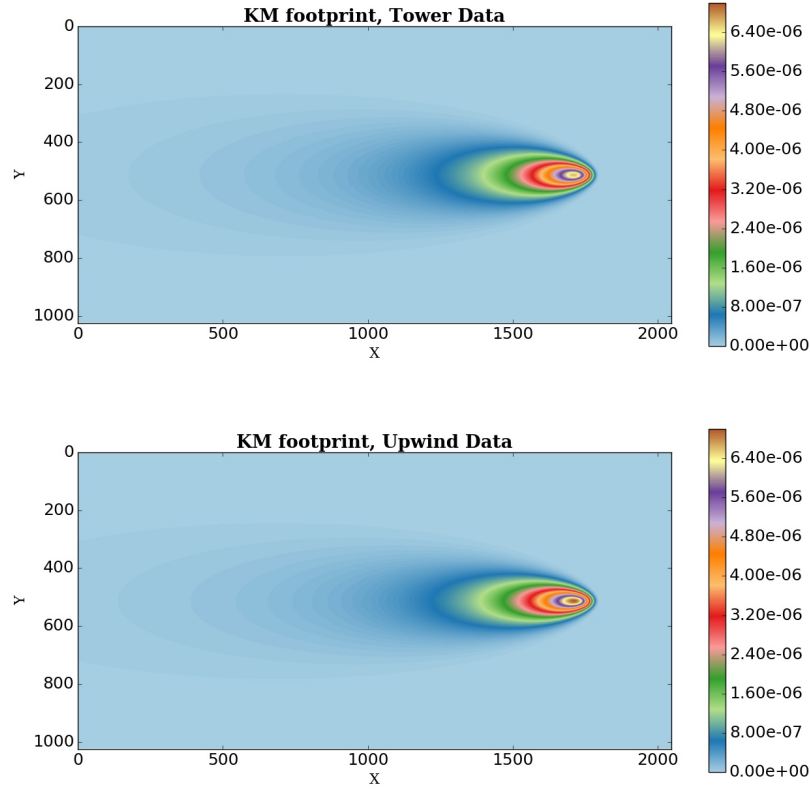


Figure 3: Korman-Meixner Footprint distributions. Model parameters taken from Hotel Torni EC data (above) and from LES data upwind of Hotel Torni (below).

Author’s response: Developing new or modifying the existing analytical footprint models to accommodate terrain inhomogeneity is certainly an interesting proposition. And, indeed, the approach of Horst and Weil (1994) would not suffice as their modification only accounts for a step change in source strength. Considering this issue, the LES-LS footprint generated herein is very interesting because the crosswind integrated footprint depicts a steplike change at $x \approx 2700m$ in Fig. 9 (P22), which corresponds to a location where a transition to a moderately more dense building pattern occurs. But, what is noteworthy is that the sea-land interface, which is accentuated by a large ship-yacht building at $x \approx 2000m$, is not discernible in the footprint at all. But, thanks to the availability of digital laser-scanning datasets of our cities, we are certain that iterative strategies for computing closed-form footprints over real cities could be realized. The models could process the roughness layer characteristics directly from the topography maps, processing only the area covered by the footprint ... which initially would utilize an underpredicted constant value for z_0 , etc. However, such models would need a lot of calibration data and it is likely that LES-based methods are the only feasible way to generate it.

Author’s changes in manuscript: We propose no changes.

References

- A. Hellsten, S. Luukkonen, G. Steinfeld, F. Kanani, T. Markkanen, L. Järvi, T. Vesala, and S. Raasch. Footprint evaluation for flux and concentration measurements for an urban-like canopy with coupled lagrangian stochastic and large-eddy simulation models. *Bound-Lay. Meteorol.*, 157:191–217, July 2015.
- M. Letzel. *High resolution large-eddy simulation of turbulent flow around buildings*. Available online www.muk.uni-hannover.de/institut/dissertationen.htm, 2007.
- M. Letzel, M. Krane, and S. Raasch. High resolution urban large-eddy simulation studies from street canyon to neighbourhood scale. *Atmospheric Environment*, 42:8770–8784, 2008.

- M. Letzel, C. Helmke, E. Ng, X. An, A. Lai, and S. Raasch. Les case study on pedestrian level ventilation in two neighbourhoods in hong kong. *Meteorologische Zeitschrift*, 21(6):575–589, 2012.
- J. M. Wilczak, S. Oncley, and S. Stage. Sonic anemometer tilt correction algorithms. *Boundary-Layer Meteorology*, 99(1):127–150, 2001.

Numerical Framework for the Computation of Urban Flux Footprints Employing Large-eddy Simulation and Lagrangian Stochastic Modeling

Mikko Auvinen^{1,2}, Leena Järvi¹, Antti Hellsten², Üllar Rannik¹, and Timo Vesala¹

¹Department of Physics, P.O. Box 64, University of Helsinki, 00014 Helsinki, Finland

²Finnish Meteorological Institute, P.O. Box 503, 00101 Helsinki, Finland

Correspondence to: Mikko Auvinen (mikko.auvinen@helsinki.fi)

Abstract. Conventional footprint models cannot account for the heterogeneity of the urban landscape imposing a pronounced uncertainty on the spatial interpretation of eddy-covariance (EC) flux measurements in urban studies. This work introduces a computational methodology that enables the generation of detailed footprints in arbitrarily complex urban flux measurements sites. The methodology is based on conducting high-resolution large-eddy simulation (LES) and Lagrangian stochastic (LS) particle analysis on a model that features a detailed topographic description of a real urban environment. The approach utilizes an arbitrarily sized target volume set around the sensor in the LES domain, to collect a dataset of LS particles which are seeded from the potential source-area of the measurement and captured at the sensor site. The urban footprint is generated from this dataset through a piecewise post-processing procedure, which divides the footprint evaluation into multiple independent processes that each yield an intermediate result that are ultimately selectively combined to produce the final footprint. The strategy reduces the computational cost of the LES-LS simulation and incorporates techniques to account for the complications that arise when the EC sensor is mounted on a building instead of a conventional flux tower. The presented computational framework also introduces a result assessment strategy which utilizes the obtained urban footprint together with a detailed land cover type dataset to estimate the potential error that may arise if analytically derived footprint models were employed instead. The methodology is demonstrated with a case study that concentrates on generating the footprint for a building-mounted EC measurement station in downtown Helsinki, Finland, under neutrally stratified atmospheric boundary layer.

1 Introduction

Micrometeorological measurements in densely built city environments pose an antipodal problem: They are essential in establishing the fundamental basis for the study of urban microclimate, but these measurements are endowed with pronounced uncertainties, which mainly originate from the topographic and elemental complexity of the urban landscape. The resulting noncompliance between the theory and practice in urban micrometeorological measurements undermines the study on how our cities interact with the surrounding atmosphere. At the very heart of this discord lies the problem concerning the determination of effective source-areas, or footprints, of urban flux or concentration measurements.

The footprint is a concept used to describe the surface area that contains the sources and sinks which contribute to the measured quantity obtained by a sensor (Pasquill, 1972). In another words, it is such a sensor's 'field of view' whose identification is essential in interpreting the obtained flux or concentration values in their correct spatial extent (Schmid, 2002). Mathematically, the footprint is a transfer function f , which relates the value of a measurement (of flux or concentration) η at location $\mathbf{x}_M = (x_M, y_M, z_M)$ to the spatial distribution of flux or concentration sources Q from a volumetric domain Ω of interest:

$$\eta(\mathbf{x}_M) = \int_{\Omega} f(\mathbf{x}_M, \mathbf{x}') Q(\mathbf{x}') d\mathbf{x}' \quad (1)$$

~~Thus, the~~ where f has dimensions of inverse of integration units [m^{-3}]. In the subsequent presentation the vertical dimension of domain Ω is collapsed and thereby f has dimensions of inverse area [m^{-2}]. The footprint can also be interpreted as a spatial weighting function that expresses the probability with which a fluid element that coincides with an element of Q contributes to the measurement at \mathbf{x}_M (Pasquill and Smith, 1983). In accordance with Sogachev et al. (2005), this study does not adhere to the strict interpretation where the footprint is only a function of turbulent diffusion and source-sensor location, but allows the possibility that, for instance, variations in source-area topography can influence the result. In this context, topography refers to an elevation model of the land and buildings together. Consequently, the footprint should provide the critical link between the point measurement and the geographical distribution of sources, yielding a complete characterization of η with regard to its contents. In effort to achieve this, analytical closed-form solutions have been derived for the footprint functions – see Schmid (2002) for a comprehensive review – but only under the assumptions that (1) steady-state conditions prevail during the analyzed-analysed period, (2) turbulent fluctuations in the atmospheric boundary layer (ABL) are horizontally homogeneous, and (3) there is no vertical advection. These assumptions allow the governing equations to be reduced to a time-averaged balance between advection and turbulent diffusion which admits, with appropriate parametrization of the turbulent flow field, a closed-form expression for the footprint function.

The underlying assumptions are often acceptable in measurement sites where the sensors are mounted on towers that have been appropriately placed above homogeneous forested landscapes and well above the surface roughness sublayer height where the effects of the individual roughness elements disappear. However, due to practical regulations constraining measurement campaigns in densely populated cities, sufficiently tall flux towers cannot be erected above the skyline of central urban areas. It is often inevitable that if the urban microclimate is to be studied experimentally, the measurements must be extracted-obtained near the border of the roughness sublayer by sensors that are mounted either on low-rise towers or on top of tall buildings. In these suboptimal conditions, assumption (2) becomes strictly invalid and assumption (3) highly questionable because urban boundary layer (UBL) flows are typically characterized by developing and strongly heterogeneous flow conditions particularly at lower elevations where individual buildings influence the turbulence.

Considering that the analytical footprint models effectively provide ellipse-shaped probability distributions for the source contributions without any regard to topographic heterogeneities, it becomes clear that the use of such source-area models becomes highly suspect in real urban conditions. This is an unacceptable state of affairs in the urban micrometeorology research and immediately calls for targeted efforts to alleviate the uncertainties associated with the invaluable urban flux-measurement data. Although, the first efforts by Vesala et al. (2008), utilizing the method by Sogachev et al. (2002), already explored

topography-sensitive urban footprints, the applicability of the documented approach has not reached the scale and accuracy requirement of the urban footprint problems considered herein.

As a response, this work introduces a new numerical methodology to construct detailed topography-sensitive footprints for complex urban flux measurement sites by the means of pre- and post-processing developments and a large-eddy simulation (LES) solver suite that features an embedded Lagrangian stochastic (LS) particle model. This coupled model will be referred to with an acronym LES-LS. The proposed methodology is designed to be first and foremost a post-processing procedure, which exploits the current state-of-the-art LES-LS modeling framework in an urban setting with a minimal investment in the initial setup.

The principal objective is to provide a reliable computational framework, founded on a high-resolution LES-LS analysis, to generate the most accurate footprint estimates feasible without the need to conduct tracer gas experiments, which are nearly impossible to arrange in residential areas. These computationally generated footprints open up the possibility to study the appropriate placement of new measurement stations and to assess the magnitude of the potential misinterpretation which may arise from the application of closed-form footprint models to urban flux or concentration measurements. The proposed framework is also supplemented by a convenient technique to approximate this error with the assistance of a land cover classification dataset.

The methodology is demonstrated with a numerical case study, which is staged in Helsinki, the coastal capital city of Finland, and focuses on the eddy-covariance (EC) measurement site mounted on the roof of Hotel Tornio (Nordbo et al., 2015; Kurppa et al., 2015), which is the tallest accessible building in the downtown region. The EC sensor is situated 2.3 m above the building, corresponding 74 m above the sea level, whereas the building height is 57.7 m. Thus, the measurement height is $z_M = 60$ m above the surrounding ground level while the mean building height of the surrounding area is 24 m. ~~The sensor is judged to be situated at the edge or just above the roughness sublayer (Nordbo et al., 2013).~~ The site belongs to SMEAR III (Station for Measuring Ecosystem-Atmosphere Relations, Järvi et al., 2009) and is also part of the urban network of atmospheric measurement sites (Wood et al., 2013). Its potential source-area closely resembles a typical European city arrangement that features perimeter blocks with inner courtyards.

This study employs the PARallelised LES Model PALM (Maronga et al., 2015; Raasch and Schröter, 2001), which has been previously applied to footprint studies by Steinfeld et al. (2008) and very recently by Hellsten et al. (2015) who constructed footprints for an idealized city environment as a precursor study to this work. The presented contribution places special emphasis on the issue of composing footprints for flux measurement sites that are surrounded by arbitrarily heterogeneous topography and may be compromised by the fact that they are mounted on top of actual buildings instead of conventional radio-mast-like towers. Such complex urban setting requires a new mechanism for constructing footprints, which is accompanied by a requirement that the associated LES-LS simulation is capable of resolving the relevant turbulent structures ranging from the street canyon scale phenomena within the roughness sublayer to the larger ABL structures, while also accounting for the interaction between them (Anderson, 2016).

2 Materials and methods

2.1 Numerical modeling framework

The PALM model utilized in this study is an open source numerical solver for atmospheric and oceanic flow simulations. The software has been carefully designed to run efficiently on massively parallel supercomputer architectures and it is therefore exceptionally well-suited for high-resolution UBL simulations considered herein. The LES model employs finite-difference discretization on staggered Cartesian grid and utilizes an explicit Runge-Kutta time-stepping scheme to solve the evolution of velocity vector $\mathbf{u} = (u, v, w)$, modified perturbation pressure π^* , potential temperature θ and specific humidity q_v fields from the conservation equations for momentum, mass, energy and moisture respectively. The conservation equations are implemented in an incompressible, Boussinesq-approximated, non-hydrostatic and spatially filtered form, which indicates that the conservation of mass is imposed by the solution to a Poisson equation for π^* . The filtering refers to the separation of scales in LES where the turbulent scales containing the majority of energy are resolved by the grid while the diffusive effect of the unresolved subgrid-scale (SGS) turbulence is accounted for by a SGS turbulence model. To achieve closure in the final system of equations, PALM implements the 1.5-order SGS turbulence model by Deardorff (1980), modified according to Moeng and Wyngaard (1988) and Saiki et al. (2000). The model involves an additional prognostic equation for SGS turbulent kinetic energy (SGS-TKE) e .

The embedded Lagrangian particle model in PALM implements the time-accurate evolution of discrete particles (either with or without mass) through a technique that conforms to the LES approach: the trajectories are integrated in time such that the transporting velocity field is decomposed into deterministic (i.e. resolved) and stochastic (i.e. subgrid-scale) contributions. The deterministic velocity components are directly obtained from the LES solution, while the random components are evaluated according to Weil et al. (2004). Although LS ~~modeling~~ modelling approaches that are less computationally expensive exist (Glazunov et al., 2016), warranting further investigation on their applicability to urban problems, the presented high-resolution urban flow problem is assumed to require the highest level of description also from the LS model; the interaction between the atmospheric wind and the cascade of multistoried buildings and street canyons gives rise to strongly anisotropic turbulence structures, which are not reliably amendable to parametrization.

While the LES-LS simulations are carried out in large supercomputing facilities, the pre-processing of the urban topography model and the post-processing of the final footprint from raw data is performed on a personal workstation utilizing freely available numerical scripting and data visualization technologies. See Section 5 for availability.

2.2 Urban LES setup and analysis

2.2.1 Urban topography model

The urban topography model used in describing the bottom wall boundary of the LES domain, is prepared from a detailed 2 m resolution laser-scanned dataset of the Helsinki area (Nordbo et al., 2015). The data is conveniently available in raster map

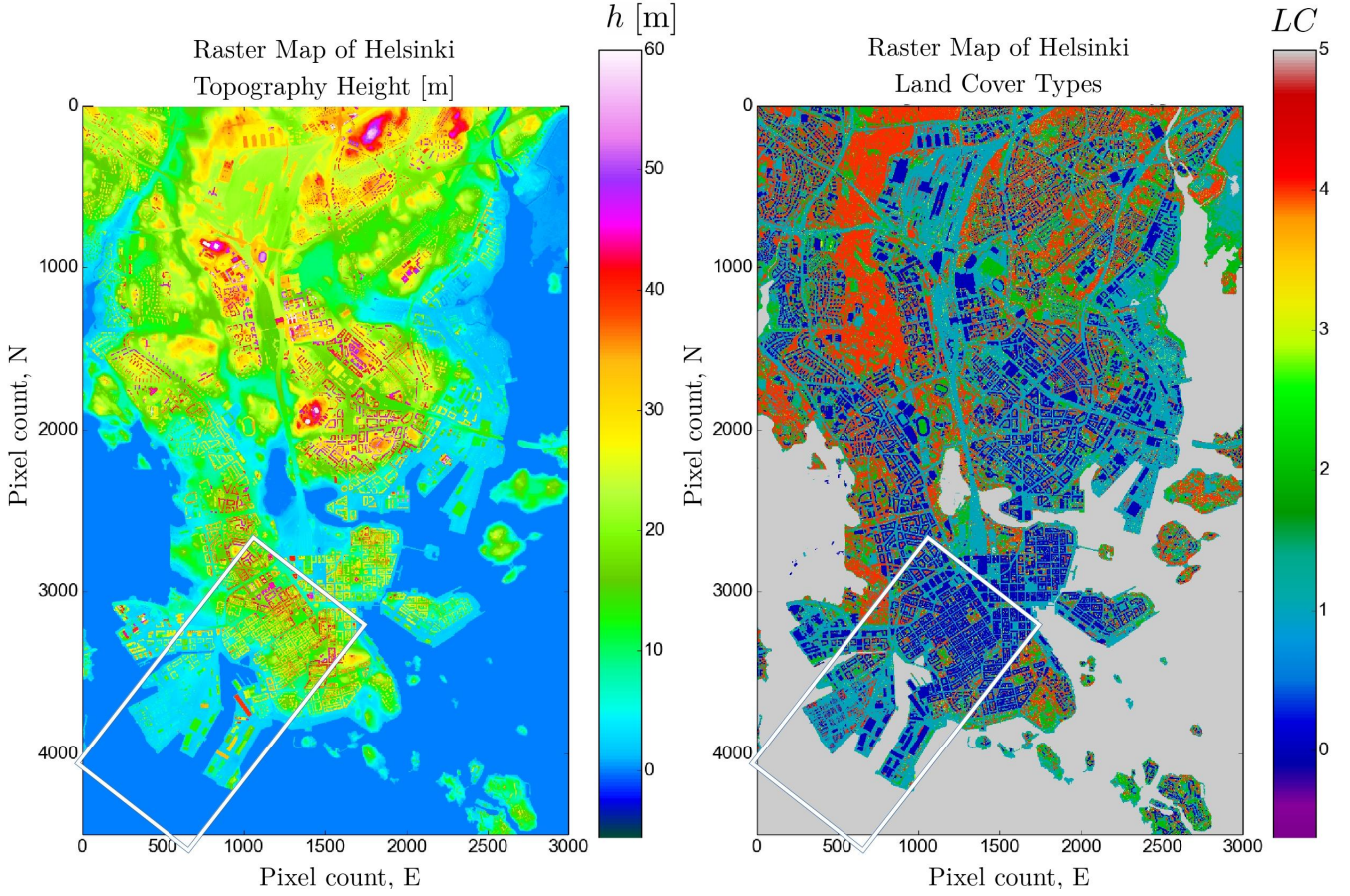


Figure 1. Raster maps of topography height h (left) and land cover types LC (right) from Helsinki area. The rectangle in the bottom left corner is aligned with south-westerly wind and represents the area of interest for the footprint analysis. In the surface type classification each pixel (2 m) is categorized according to the following numbering: 0=building, 1=impervious (rock, paved, gravel), 2=grass, 3=low vegetation, 4=high vegetation and 5=water.

format and, in addition to the height distribution $h(x, y)$, also includes land cover type classification $LC(x, y)$ which are both shown in Fig. 1. Access to similar surface data source is a critical pre-requisite for the presented methodology.

The horizontal domain for the LES analysis extends $L_x = 4096$ m in the mean wind direction and $L_y = 2048$ m in the crosswind direction and is spatially oriented such that x -axis is coincident with the geostrophic wind direction of the case study. The EC measurement site at Hotel Tornı is pivotally located in the LES domain to facilitate the determination of its footprint. However, the extracted raster map has to be first purposefully pre-processed to attain a form that complies with the LES analysis-specific requirements. The following manipulations were applied to obtain the final topography model depicted in Fig. 2:

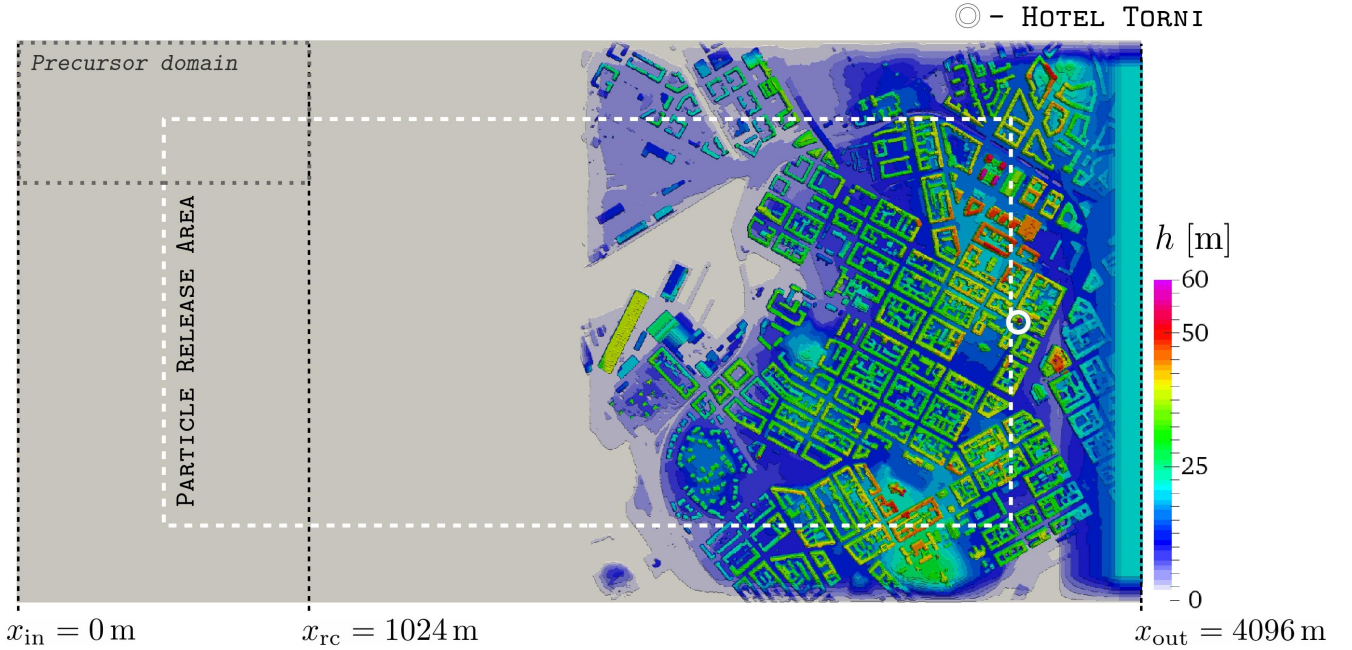


Figure 2. Visualization of the topography height distribution underlying the LES domain. The particle release area is enveloped by a white dashed line. The size of the precursor domain is outlined in the top left corner. The location of the turbulence recycling plane is marked by a black dotted line at x_{rc} .

1. The first half of the topography model (where $x < L_x/2$) is flattened for the purpose of generating physically realistic ABL conditions at the inlet through turbulence recycling technique (see below).
2. The lateral sides were made identical for cyclic boundary condition treatment by applying a zero-height margin that smoothly blends toward the values in the interior.
- 5 3. Immediately upstream of the outlet boundary, a margin with sloping terrain height is applied to force the highly turbulent flow (caused by the buildings near the end of the domain) to slightly accelerate before reaching the outlet boundary where reversed flow causes numerical difficulties.

2.2.2 Physical setup for the LES model

The meteorological conditions for the simulation are adopted from September 9th in 2012 when near neutral ABL conditions were recorded with the EC measurements made in-Torni on top of the Torni building. Lidar measurements (Wood et al., 2013) from the chosen time frame yielded $|\mathbf{u}_g| = 10 \text{ m s}^{-1}$ for the geostrophic wind in south-westerly direction ($\alpha = 218^\circ$) and $\delta \approx 300 \text{ m}$ for the boundary layer height. The Coriolis force (corresponding to latitude 60°N) is included to account for the turning of the flow within the boundary layer. The meteorological conditions are conveyed to the simulation by ~~the~~ means of a

pre-computed ABL solution over flat surface, which in this context represents the surface of the Baltic Sea bordering Helsinki from the south. The boundary conditions for the velocity solution in this *precursor* simulation were set such that a ~~slip-wall condition~~ fixed value is applied at the top and a no-slip condition at the bottom boundary of the domain while setting all the lateral boundaries as periodic.

- 5 For the precursor simulation the solver was run with an option that explicitly conserves the initial mass flow rate across the system which was specified by initializing the velocity field ~~by~~ with a constant value $\mathbf{u}|_{t=0} = 0.95\mathbf{u}_g$. This initialization value was determined by trial and error with the objective that the precursor solution would ultimately yield the desired geostrophic wind value at $z = \delta$ for the ~~temporally and~~ horizontally averaged velocity field $\langle \bar{\mathbf{u}} \rangle^{\text{pre}}$. The boundary layer growth was controlled by initializing the potential temperature field with a vertical profile $\theta_0(z)$ that features a strong inversion layer
- 10 at $300 < z < 350$ m. This $\theta_0(z)$ -profile is defined according to the following lapse rates:

$$\frac{\partial \theta_0}{\partial z} = \begin{cases} 0 \text{ K km}^{-1} & 0 \text{ m} \leq z < 300 \text{ m} \\ 50 \text{ K km}^{-1} & 300 \text{ m} \leq z < 350 \text{ m} \\ 3 \text{ K km}^{-1} & 350 \text{ m} \leq z. \end{cases}$$

- The precursor LES solution was computed on a grid that has the same resolution and vertical dimension as the principal urban LES grid, but its lateral dimensions are smaller by an integer division. Table 1 summarizes the respective grid characteristics. The study features a spatial resolution of 1 m, which is unprecedented at this scale. The same resolution was found
- 15 sufficient by Giometto et al. (2016) to capture the relevant turbulence physics within a real urban roughness sublayer. However, the effect of grid resolution on the final result is not investigated in this work. The influence of the structural details of the urban surface (balconies, chimneys, ventilation ducts, stationary cars, small-scale vegetation etc.) not included in the urban topography model are taken into account by specifying a uniform roughness length $z_0 = 0.05$ m on the bottom boundary surfaces (Letzel et al., 2012).

- 20 The precursor simulation generates a highly resolved ABL solution that will be utilized, first, in a recursive manner to initialize the entire urban LES flow field with turbulence and, second, to aid constructing appropriate inlet boundary conditions though a technique labeled *turbulence recycling*, which is based on the method by Lund et al. (1998) with modifications by Kataoka and Mizuno (2002). The implementation of this boundary condition in PALM is presented in Maronga et al. (2015), but to aid discussion the description is also covered here with modified notation.

- 25 Denoting prognostic field variables by $\psi = \psi(\mathbf{x}, t)$ where $\psi \in \{u, v, w, \theta, e\}$, the precursor solution is used to extract ~~temporally and~~ horizontally averaged vertical profiles $\langle \bar{\psi} \rangle^{\text{pre}}(z)$ for the turbulence recycling boundary condition. These stationary profiles are utilized at the inlet boundary in the urban simulation to conserve the global state of the mean flow, but in a manner that also incorporates physically sound turbulent fluctuations that occur in an ABL flow. This is achieved by specifying a recycling plane, that is, an yz -plane at a windwise coordinate x_{rc} , placed sufficiently far downstream from the inlet to prevent feedback
- 30 of disturbances between the two planes. The fluctuations are obtained from the recycling plane through the following technique

$$\psi'|_{x=x_{\text{rc}}} = \psi|_{x=x_{\text{rc}}} - \langle \psi \rangle_y|_{x=x_{\text{rc}}},$$

Table 1. Computational grid specifications.

	Resolution	Dimensions	Total no. of grid points
	$\Delta x, \Delta y, \Delta z$	$N_x \times N_y \times N_z$	$\approx N_{tot}$
precursor grid	1 m, 1 m, 1 m	$1024 \times 512 \times 512$	$\approx 67 \times 10^6$
urban grid	1 m, 1 m, 1 m	$4096 \times 2048 \times 512$	$\approx 4295 \times 10^6$

where the spatial mean (in the crosswind direction) $\langle \psi \rangle_y = \langle \psi \rangle_y(z, t)$ at the recycling plane is computed as a time dependent vertical profile

$$\langle \psi \rangle_y|_{x=x_{rc}} = \frac{1}{N_y} \sum_{i=1}^{N_y} \psi(x_{rc}, y_i, z, t)$$

that carries a dependence on N_y . Finally, utilizing the precursor generated mean profiles, the turbulence recycling inlet bound-

ary condition becomes

$$\psi|_{x=x_{in}} = \langle \bar{\psi} \rangle^{\text{pre}} + \psi'|_{x=x_{rc}}. \quad (2)$$

In association with the turbulence recycling, the top boundary condition in the main simulation is specified as a slip-wall.

In this study, the recycling plane is situated, as shown in Fig. 2, in accordance with the precursor domain length such that $(x_{rc} - x_{in}) = 1024 \text{ m} \approx 3.4\delta$ and the same distance is allocated from the recycling plane to the edge of the urban topography to ensure that disturbances originating from the urban terrain are not conveyed back to the inlet. The chosen turbulent inlet arrangement generated no observable feedback effect on the incoming turbulence field.

2.2.3 LS ~~Particle~~ particle model ~~Setup~~ setup for the footprint evaluation

The embedded LS particle model is employed such that, after the initial transients in the LES solution have subdued (after approximately 5 min of simulation), the release of particles is activated within the region outlined in Fig. 2. The release area extends 3030 m ($\approx 41z_M$) in the upwind direction and 780 m ($\approx 10.5z_M$) in both lateral directions from the Hotel Torni's EC site. The release area has been trimmed according to preliminary trial simulations to reduce the number of redundant particles in the domain.

Denoting the Lagrangian coordinate vector of the l^{th} particle by $\mathbf{X}^l(t) = (X^l(t), Y^l(t), Z^l(t))$, the release locations $\mathbf{X}_o^l = \mathbf{X}^l|_{t=0}$ are uniformly distributed 2 m apart in the x - and y -directions while the vertical coordinate is set $\Delta Z_o = 1 \text{ m}$ above the topography: $Z_o^l = h(X_o^l, Y_o^l) + \Delta Z_o$. The release height of one grid spacing at 1 m resolution is inferred to be a justifiably close to the surface to represent both the traffic emissions as well as the surface atmosphere exchanges. It also lowers the risk of accumulating a large number of particles within the first grid cell where the velocity values are dictated by the logarithmic wall function and the vertical advection of particles solely by the stochastic model due to Weil et al. (2004). Thus, the underlying assumption is that, at 1 m resolution, the release height of 1 m above solid surfaces does not influence significantly the footprint distribution, which is evaluated at 2 m horizontal resolution.

The raw particle data for constructing footprints through LES-LS ~~modeling~~ modelling in an arbitrarily heterogeneous environment is obtained by setting a target volume around the specified sensor location x_M and recording, which particles hit this target. Although this approach appears natural and straight-forward at first sight, a closer scrutiny reveals a number of problematic issues which arise with this setup, particularly when the flux sensor is mounted on a building (or close to one) instead of a tower. Purely from the perspective of particle data acquisition in the LES-LS simulation, setting a larger target volume would directly alleviate the computational effort required to gather a large enough dataset of particle hits, but this would clearly violate the formal premise that the footprint should be evaluated for the coordinate x_M of the sensor. However, it turns out that the discrete setting of the LES-LS approach questions the relevance of seeking an urban footprint for a precise point near the surface of a solid structure.

Consider the problem of ~~fixating~~ strictly concentrating on the exact location x_M of the sensor. This effort becomes immediately futile as the spatial resolution with which the buildings are described in the topography model (which contains information on elevation changes only) cannot account for structural details that, in reality, influence the flow conditions at the precise location of the sensor. The same reasoning also extends to the LES flow analysis where the computational cost would become prohibitively expensive if the resolution would be set according to the $\sim 10^{-1}$ m scale of structural detail of building facades and roof-tops in the hypothetical situation that such datasets were available. Therefore, it is important that the methodology for evaluating footprints in urban environments comes with a pre-requisite that the resolution demands of the LES-LS model are purely dictated by the turbulent structures within the urban canopy and not the fine details of the sensor site. On these grounds, the method to collect particle data in the LES-LS simulation is based on setting a finite target volume around the sensor location x_M without strictly dictating the appropriate size. This is done understanding the fact that the flow around the sensor mounting building strongly interacts with the flow resulting in strong gradients in the mean velocity field in the vicinity of the sensor. This is bound to further complicate the subsequent post-processing of the flux footprint because the eddy-covariance approach necessitates that the effect of the mean flow should be eliminated through the process of coordinate rotation (Aubinet et al., 2012), which is presented in the context of this study in Section 2.3.1. Clearly, the discrete LES-LS approach in an arbitrarily complex urban environment is endowed with pronounced uncertainties. For this reason, the post-processing procedure has to encompass a capability to conduct spatial sensitivity analysis on the intermediate footprint results and, according to its outcome, selectively exploit the particle dataset in the final processing of the result.

Adopting this strategy reduces the level of ~~rigor~~ rigour required at the setup stage of the LES-LS analysis and simplifies the guidelines for the particle acquisition: The target volume should be centered at x_M and its dimensions chosen to represent the sensor site proportionately (vagueness intended) to the dimensions of the building geometry. In all cases, it is important to acknowledge that, as a rule of thumb, more than 10^7 particle hits need to be recorded at the target volume during the course of the LES-LS simulation to gather a large enough dataset for flexible post-processing. In general, it pays off to specify an oversized target and gather a large dataset accepting that it contains certain percentage of particle hits whose contribution will be discarded. In this study, using $L_T \approx 4$ m to represents the horizontal length scale of Hotel Torni's apex structure on which the sensor is mounted, the target for monitoring particle hits is specified as a box of volume $\mathcal{V}_T = \Delta x_T \times \Delta y_T \times \Delta z_T = 8 \text{ m} \times 20 \text{ m} \times 12 \text{ m}$ $\mathcal{V}_T = \Delta x_T \times \Delta y_T \times \Delta z_T = 2L_T \times 5L_T \times 3L_T$. The box is centered at the apex of

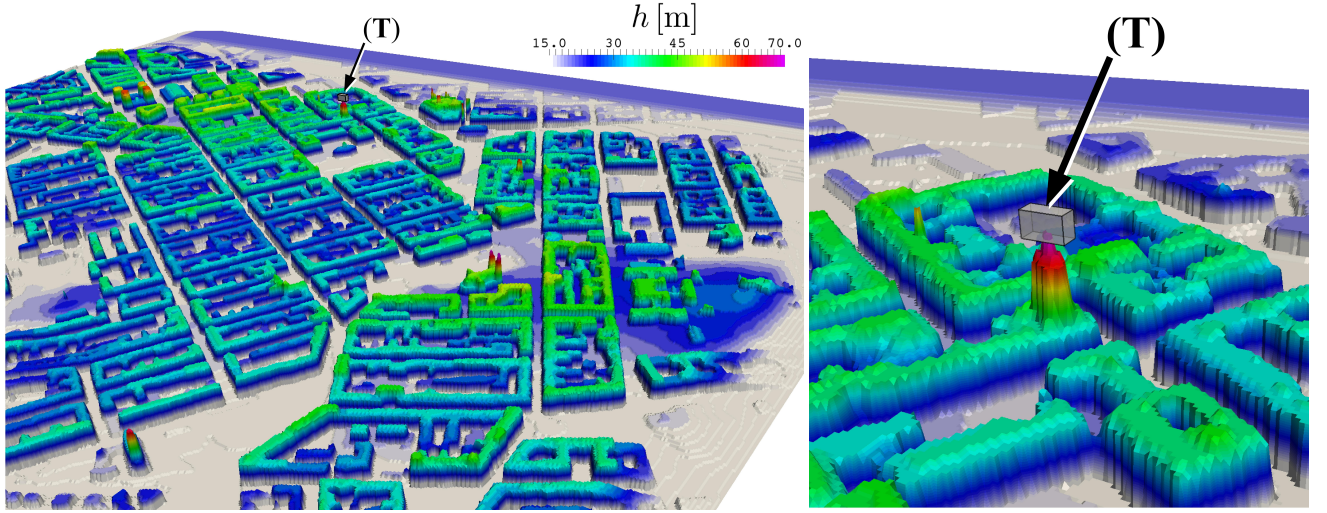


Figure 3. A three-dimensional rendering of the urban topography near Hotel Tori (left) and a close-up featuring the target box (T) for particle capturing (right).

Hotel Tori (which closely coincides with the actual sensor location x_M) such that it extends ~~10 m~~ $2.5L_T$ in the crosswind and upward directions, ~~4 m~~ $1L_T$ in both streamwise directions and ~~2 m~~ $0.5L_T$ downward entering partly into the building structure. And, to reiterate, these dimensions were chosen under the guiding principle that the target box reasonably represents the sensor site and enables particle hits to be gathered at higher rate. Fig. 3 provides an illustration of the size and placement of the target box in relation to the surrounding urban topography. The monitoring is performed at 0.5 s intervals, which corresponds to ca. 8 LES time steps. This allows the same particle to be recorded multiple times at different locations within the target box. This feature is intentional and desirable because of the chosen post-processing strategy.

2.2.4 LES-LS analysis

The precursor simulation is run for ~~1.5 h~~ physical time to develop the ~~ABL turbulence sufficiently and the temporal averaging is activated for the latter 45 min~~ desired ABL profile. The initialization of the primary LES-LS computation with this precursor solution expectedly results in short-lived unphysical fluctuations around the urban topography, but after 3 minutes of simulation these overshoots have been advected away from the domain. The release of LS particles is initiated after 5 minutes of simulation and from there on particles are released simultaneously in puffs at 10 s intervals such that two particles are seeded from each location at every instance. This translates into releasing approximately 2.36×10^6 particles every interval. The release schedule was determined by trial and error to best utilize the computational capacity of the supercomputer. Each particle is assigned a maximum lifetime $T_{max}^l = 1200$ s, which is long enough to guarantee that even the particles that are advected by the slowest $\sim 0.2u_g$ velocity scales, manage to travel over 2 km during this time frame. The total number of particles in the whole domain converged to approximately 68×10^6 . Particles reaching any of the lateral boundaries or the top boundary are 'absorbed',

that is, deleted and deallocated from the computer's memory while the wall boundary below functions as an ideally smooth reflective surface for the particles. The simulation was run for 3 h physical time during which ca. 19×10^6 particle hits were recorded at the target volume. The computation cost of this simulation is comparable to running 3-4 urban flow simulations with the objective on studying turbulence. [In absolute terms, the simulation took ca. 10 days on the Cray XC40 supercomputer](#)

5 [“Sisu” \(CSC – IT Center for Science, Finland\) with 2048 CPUs which amounts to ca. \$5.3 \times 10^5\$ CPU hours.](#) The LS model constituted merely 20% of the total cpu-time of the LES-LS simulation, which is an appreciably moderate value considering the high number of particles handled by the solver.

2.3 Piecewise post-processing methodology for constructing the footprint

During the LES-LS simulation, the sampling of particle hits at the target volume \mathcal{V}_T entailed recording each i^{th} particle's coordinate of origin \mathbf{X}_o^l , incident velocity $\mathbf{U}_T^l = (U_T^l, V_T^l, W_T^l)$ at the target, and the associated sample location \mathbf{X}_T^l (indicating where the particle hit the target) ultimately giving rise to a large dataset

$$\mathbf{S} = \left\{ (\mathbf{X}_o, \mathbf{U}_T, \mathbf{X}_T)^l \mid l \in \{1, \dots, N_{rp}\}, \left(\mathbf{x}_M - \frac{\Delta \mathbf{x}_T}{2} \right) \leq \mathbf{X}_T^l \leq \left(\mathbf{x}_M + \frac{\Delta \mathbf{x}_T}{2} \right) \right\}, \quad (3)$$

where N_{rp} refers to the total number of released particles.

According to the issues discussed in Section 2.2.3, the post-processing of \mathbf{S} is now required to account for the spatial uncertainty and facilitate a sensitivity study on the obtained result. This is achieved by introducing a piecewise processing strategy where the principle idea is that the original dataset \mathbf{S} is split into smaller subsets according to a Cartesian discretization of the target volume \mathcal{V}_T . See an example illustration in Fig. 4. Thus, the target is divided into subvolumes $\mathcal{V}_{i,j,k}$, satisfying $\mathcal{V}_T = \sum_k^{n_x} \sum_j^{n_y} \sum_i^{n_z} \mathcal{V}_{i,j,k}$ where the i, j, k are the Cartesian indices of the subvolumes. The number of divisions in each coordinate direction n_x, n_y , and n_z have to be determined case by case as the optimal values depend on the target volume size, the total number of particle entries in the dataset and the complexity of flow solution in the vicinity of \mathbf{x}_M .

Each target subvolume now yields an associated subset $\mathbf{s}_{i,j,k} \subset \mathbf{S}$ containing a record of the particles that hit the corresponding subvolume $\mathcal{V}_{i,j,k}$ centered at $\mathbf{x}_{\mathcal{V}_{i,j,k}} = \mathbf{x}_M + d\mathbf{x}_{i,j,k}$, where $d\mathbf{x}_{i,j,k}$ is the displacement from the exact measurement location \mathbf{x}_M to the center of the subvolume $\mathcal{V}_{i,j,k}$. The obtained subsets can be independently post-processed to generate sectional flux footprints $f_{i,j,k}$ utilizing an estimator similar to Kurbanmuradov et al. (1999) (see also Rannik et al., 2000), but modified to approximate the footprint by computing the probability with which a fluid parcel released from a continuous source at $\mathbf{x}_f = (x, y, h + \Delta Z_o)$ will lie within $\mathcal{V}_{i,j,k}$ at any given time. Discretizing the source-area (i.e. footprint grid) by $\Delta \mathbf{x}_f = (\Delta x_f, \Delta y_f, 0)$ [with \$\Delta x_f = \Delta y_f = 2\text{m}\$](#) , the estimator reads

$$f_{i,j,k}(\mathbf{x}_f) = \frac{1}{N_{i,j,k} \Delta x_f \Delta y_f} \sum_l^{N_{i,j,k}} \frac{W_T'^l}{|W_T'^l|} I \quad (4)$$

which has an implicit dependence on the vicinity of $\mathbf{x}_{\mathcal{V}_{i,j,k}}$ through the spatial confinement of $\mathbf{s}_{i,j,k}$. In Eq. (4) $N_{i,j,k}$ denotes the number of particles entries within the subset $\mathbf{s}_{i,j,k}$ collected over a sufficiently long time period, and

$$W_T'^l = \left(W_T^l - \langle \bar{w} \rangle_{i,j,k} \right) \quad (5)$$

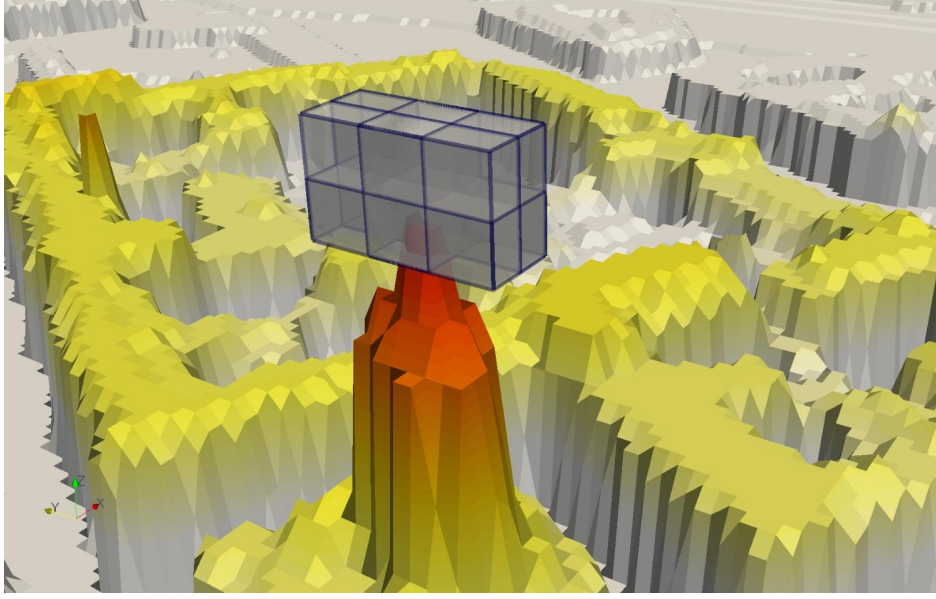


Figure 4. Example discretization of target volume \mathcal{V}_T into $n_x \times n_y \times n_z$ subvolumes. A coarse illustration with $n_x = 2$, $n_y = 3$, and $n_z = 2$ is shown.

is the vertical velocity deviation of the l^{th} particle from the spatially averaged mean flow value evaluated over the subvolume $\mathcal{V}_{i,j,k}$. Equation (5) relates to the coordinate rotation of the EC sensor, which eliminates the effect of \bar{w} from the vertical flux evaluation by aligning the sensor with the mean wind (Aubinet et al., 2012, p.76). Here, the evaluation of $W_T'^l$ proves particularly problematic due to the approximations associated with the use of $\langle \bar{w} \rangle_{i,j,k}$ and, therefore, it is a subject of further discussion in Section 2.3.1. Finally, the function $I = I(\mathbf{X}_o^l, \mathbf{x}_f, \Delta \mathbf{x}_f)$, which is responsible for distributing the hits on to the footprint grid based on the particles' coordinate of origin, is given as follows

$$I(\mathbf{X}_o^l, \mathbf{x}_f, \Delta \mathbf{x}_f) = \begin{cases} 1 & \text{if } \mathbf{x}_f - \frac{\Delta \mathbf{x}_f}{2} \leq \mathbf{X}_o^l < \mathbf{x}_f + \frac{\Delta \mathbf{x}_f}{2} \\ 0 & \text{elsewhere} \end{cases} \quad (6)$$

The evaluation procedure (4) closely resembles that of Rannik et al. (2003), with the exception that here it is assumed that each particle is represented only once in each subset $\mathbf{s}_{i,j,k}$.

- 10 ~~By default, the~~ The individual sectional footprints are typically evaluated from subsets that typically contain $\sim 10^5$ contain an insufficient number of particle data entries ~~; which is not a sufficient number needed~~ to obtain a converged solution for the weight distribution. This is anticipated and acceptable in the piecewise approach because the objective is footprint distribution. (Hellsten et al., 2015) showed that in an urban-like environment $\sim 10^6$ particle hits are required to attain an adequately converged footprint distribution while $\sim 10^5$ particle entries is sufficient to reveal the characteristic shape of the near
- 15 field distribution. In the piecewise post-processing approach, the sectional footprint contributions may be constructed from an arbitrarily small dataset, but since the methodology substantially benefits from the ability to inspect and compare the individual

distributions which should, however, reveal the characteristic shape of the distribution readily. For this reason individual $f_{i,j,k}$ distributions, it is desirable to work with subsets $s_{i,j,k}$ containing more than 10^5 entries. To facilitate the post-processing procedure, each $f_{i,j,k}$ should be individually stored as a stand-alone two-dimensional scalar field (i.e. raster map) that can be projected onto the three-dimensional topography model of the LES domain to permit descriptive visualizations in the urban setting. The value of the denominator $D_{i,j,k} = N_{i,j,k} \Delta x_f \Delta y_f$ featuring in Eq. (4) has to be stored together with the footprint distribution because the assembly of the final footprint is carried out by computing

$$f = \frac{\sum_{i,j,k \in K} D_{i,j,k} f_{i,j,k}}{\sum_{i,j,k \in K} D_{i,j,k}}, \quad (7)$$

where K is the set of all i, j, k combinations which have been selected via spatial sensitivity analysis (covered in Section 2.3.2).

2.3.1 Coordinate rotation via farfield correction

The piecewise processing of the footprint carries an inherent difficulty that arises in situations where the mean flow displays strong gradients within the target volume. This is evidently present in the considered case study featuring an EC sensor mounted close to the top of a building. The difficulty relates to the evaluation of $\langle \bar{w} \rangle_{i,j,k}$ which is used in the footprint evaluation to extract the fluctuating velocity components about the mean value within its corresponding subvolume (as shown above). The initially ~~attempted-implemented piecewise processing~~ approach naturally involved utilizing LES to obtain the (45 min time-averaged) mean velocity distribution \bar{w} from within the target box volume and evaluating the spatial average $\langle \bar{w} \rangle_{i,j,k}$ for each subvolume $\mathcal{V}_{i,j,k}$. However, with the Hotel Tornì case study it became evident that this approach gave rise to a systematic negative bias in ~~all footprints~~ the footprints, which becomes immediately apparent in the far field distributions. This outcome persisted ~~despite refining until~~ the discretization of the target volume ~~(by increasing n_x, n_y , and n_z) which, however, is constrained by the number of particle data entries in each $s_{i,j,k}$.~~

The issue is best demonstrated by an example case setting where the target volume is split into $n_x \times n_y \times n_z = 80$ subvolumes by specifying $n_x = 4$, $n_y = 5$, and $n_z = 4$. This resulted in subsets that contained approximately 2×10^5 data entries, indicating that further target volume refinement is not advised because the quality of the sectional footprints would be too severely compromised. All the sectional footprints — and thus also any accumulated combination of them — came out such that the global integrals $\bar{f}^\Omega = \int_\Omega f dx$ were negative mainly because the distributions featured consistently negative far fields. This is clearly exhibited in Fig. 5, which depicts a sign distribution over the topography and a crosswind-integrated plot of a footprint, which has been obtained by the standard coordinate rotation in the piecewise processing approach.

Crosswind integration (above) and sign (below) distributions of a footprint obtained using $\langle \bar{w} \rangle_{i,j,k}$ from LES solution in the piecewise post-processing procedure.

It is recognized that the footprints in complex urban applications are not required to be positive definite as negative patches are expected to appear in the presence of individual obstacles or in larger scale due to changing vertical particle concentration profiles along the mean wind direction, which can cause more of the particles from the far field to approach the sensor from above (Horst and Weil, 1992; Finnigan, 2004; Steinfeld et al., 2008). Such net effect can also be brought about the vertical deflection in was refined according to $n_x = 8$, $n_y = 20$, and $n_z = 12$ such that the subvolumes corresponded with the uniform

1 m resolution of the LES grid. This involved generating $n_x \times n_y \times n_z = 1920$ independent $f_{i,j,k}$ contributions via Eq. (4), where the $\langle \bar{w} \rangle_{i,j,k}$ values were now directly obtained from their corresponding LES grid cells. Figure 5 illustrates the effect of target volume discretization by comparing crosswind integrated footprints \bar{f}^y at different levels of refinement. The comparison reveals how the negative bias in the far field, and the reduction in near field magnitude, immediately emerge with coarser discretizations. It should also be noted that a targeted refinement in the z -direction, while using coarser horizontal resolution in effort to generate thin subvolumes that approximate planes, does not remedy the situation because the mean flow caused by the internal boundary layer over the urban topography observed in the simulation. However, the behavior of \bar{f}^y in Fig. 5 brings this into doubt: The negative far field of the footprint gradually extends well beyond the urban landscape while sustaining a negative slope (thus strengthening the negative contributions with distance) until reaching an asymptotic level at a substantial negative value. Under the assumption that the magnitude of the gradient $\left| \left(\frac{\partial \bar{f}^y}{\partial x} \right) \right|$ will not increase beyond the farthest upstream distance from the sensor (2760 m), no physical justification will be provided herein for such a dominant negative far field. Instead, in this context the cause of this behavior is concluded to be a consequence of the numerical approach employed in the coordinate rotation. The far field asymptote value is highly sensitive to the coordinate rotation, which hinges upon the evaluation of $\langle \bar{w} \rangle_{i,j,k}$ whose applicability in the presence of high mean velocity gradients carries approximations. In the presence of high mean velocity gradients, utilizing the spatial average of the mean over $\mathcal{V}_{i,j,k}$ is associated with an assumption that the particle hit locations \mathbf{X}_T within $\mathcal{V}_{i,j,k}$ are uniformly distributed and the gradient of the mean vertical velocity field $\nabla \bar{w}$ and the ensemble average of the incident particle velocities $\nabla \langle W_T^H \rangle$ can be well approximated by the same constant vector (i.e. the planes defining the local mean profiles would be aligned). Under such conditions, gradients around the sensor site are significant in all directions. Such finite planes or one-cell-high grid layers are conventionally used as targets when Lagrangian particle based methods are utilized to evaluate footprints under heterogeneous conditions with undisturbed sensor sites (e.g. Steinfeld et al., 2008; Hellsten et al., 2015; Glazunov et al., 2016).

Unfortunately, at the required level of target volume discretization, the balance of negative and positive contributions would be unaffected by the formulation. excessive number of individual $f_{i,j,k}$ contributions causes the post-processing to become highly tedious. Since the proposed LES-LS methodology is founded on the premise that the size of the original target box around the sensor site can be chosen arbitrarily, the post-processing effort must entail a procedure that enables the exclusion of those $f_{i,j,k}$ contributions that are deemed unfit for the final assembly. However, the evidence shows that this assumption fails as the footprints obtain a notable bias. An alternative approach, which would carry the potential to remedy this, would involve determining mean vertical velocity value $\bar{w}(\mathbf{X}_T^l)$ per particle through linear interpolation utilizing the nearest available values stored on the LES grid. Unfortunately, this strategy is associated with implementation difficulties in the this selection operation becomes overly laboursome to manage when the number of subvolumes becomes large (viz. values exceeding 10^2) and particularly when the individual sectional footprint results are inadequately converged and thereby uninformative when examined independently. For instance, in this case study, the required level of discretization gives rise to $f_{i,j,k}$ contributions that are generated from ca. 10^4 particle entries, which is decidedly insufficient amount even for generating informative approximations for the near field distributions. For these reasons, it is deemed unacceptable that the evaluation of urban footprints solely relies on the established piecewise post-processing approach, consequently motivating the development

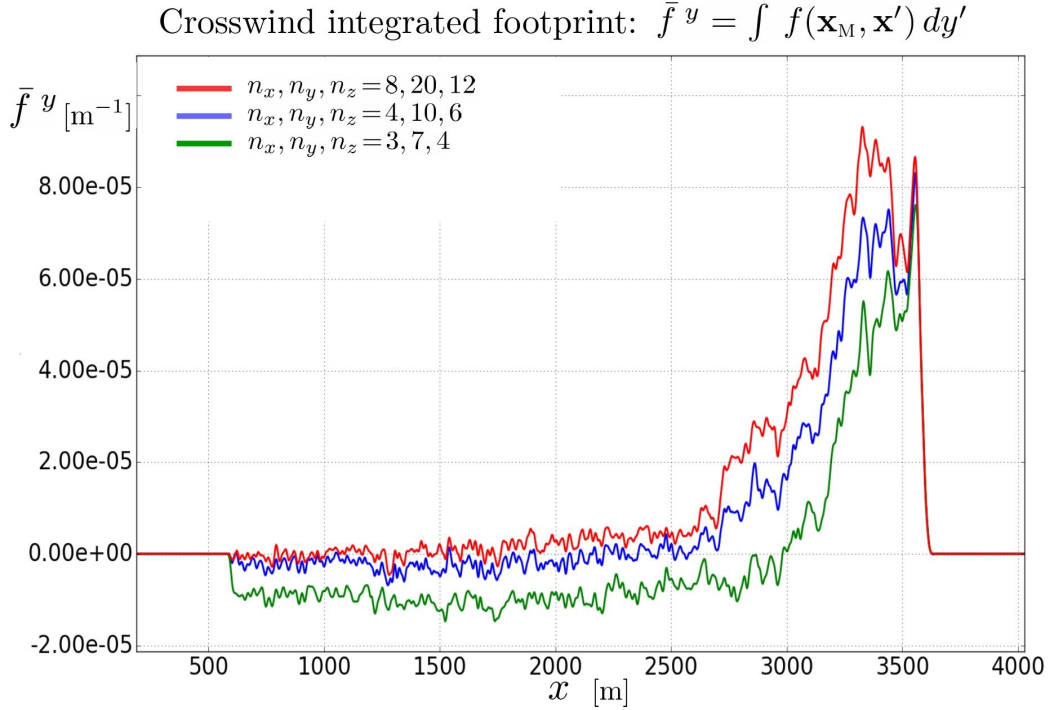


Figure 5. Crosswind integrated distributions of piecewise post-processed footprints obtained with different levels of target volume discretizations using $\langle \bar{w} \rangle_{i,j,k}$ from LES solution. Anomalous contributions from subvolumes immediately behind or in contact with the tower structure were omitted from the assembly (refer to Section 2.3.2).

~~of a new technique labeled~~ method. In response, this paper introduces an augmented coordinate rotation technique, labelled *far field correction*, which incorporates well into the proposed *piecewise* post-processing strategy. ~~The method and brings~~ significant savings in the associated data manipulation efforts. This alternative technique allows much coarser target volume discretization to be employed in the assembly of the final footprint without unacceptably compromising the result.

- 5 The method has a prerequisite that the deficiently obtained footprint (for instance, obtained via insufficient target box discretization) must exhibit a properly levelled off far field, because the approach fundamentally relies on the following simple assertion: If the footprint distribution plateaus in the far field, this asymptote can be ~~declared as amended to become~~ the zero reference level, which deviates from the 'correct' asymptote by a negligibly small offset.

- 10 Accepting this assertion and the associated approximation paves the way for a corrective coordinate rotation scheme which can be laid out by first classifying the data contributing to the far field footprint via subsets $\mathbf{r}_{i,j,k} \subset \mathbf{s}_{i,j,k}$ which are defined as the sets of particle entries whose X_o fall into the outermost portion of the domain

$$\mathbf{r}_{i,j,k} = \left\{ \mathbf{s}_{i,j,k} \mid 0 \leq (X_o^l - X_o^{min}) < \frac{\beta}{100} (x_M - X_o^{min}) \right\}.$$

Table 2. Diagnostic data from the application of far field correction in the coordinate rotation. The farthest 15% of the source-area in the LES domain is considered (i.e. $\beta = 15$).

	Target Volume Discretizations: $(n_x \times n_y \times n_z)$			Units
	$(2 \times 3 \times 2)$	$(3 \times 5 \times 3)$	$(4 \times 5 \times 4)$	
$\text{mean}(c_{i,j,k})$	0.85	0.89	0.90	m s^{-1}
$\text{std}(c_{i,j,k})$	0.09	0.11	0.15	
$\text{mean}(\langle \bar{w} \rangle_{i,j,k})$	1.16	1.13	1.15	
$\text{std}(\langle \bar{w} \rangle_{i,j,k})$	0.32	0.40	0.41	

Here $X_o^{\min} = \min_{l \in \{1, \dots, N_{rp}\}} (X_o^l)$ is the farthest upstream coordinate where particles are seeded (thus, farthest away from x_M) and β specifies the remotest percentage of the footprint across which the mean value of \bar{f}^y no longer changes, that is, $\left\langle \frac{\partial \bar{f}^y}{\partial x} \right\rangle \approx 0$ when averaging over the length of the far field. (The β -value is case specific, but a typical range is expected fall between 10 and 20.) With the help of the far field datasets $r_{i,j,k}$, the fluctuating vertical velocity component, used in Eq. (4) and previously defined by Eq. (5), can now be evaluated as

$$W_T'^l = \left(W_T^l - \langle \bar{w} \rangle_{i,j,k}^* \right), \quad (8)$$

where

$$\langle \bar{w} \rangle_{i,j,k}^* = c_{i,j,k} \langle \bar{w} \rangle_{i,j,k} \quad (9)$$

defines the far field corrected mean vertical velocity, which is obtained by scaling the initially obtained value by a coefficient $c_{i,j,k}$ to satisfy the [criteria-criterion](#) that the particle entries in each $r_{i,j,k}$ do not contribute to the corresponding $f_{i,j,k}$. This becomes a simple one dimensional optimization problem in which the objective is to minimize $J = \left| \int_{\Omega_\beta} f_{i,j,k} d\mathbf{x} \right|$, where Ω_β represents the far field domain, by the means of controlling $c_{i,j,k}$. [Thus, this technique bears resemblance to a planar fit method \(Wilczak et al., 2001\)](#). Because the control variable [here](#) is a single scalar, a rudimentary implementation of an iterative gradient decent search algorithm suffices (see, for instance, Nocedal and Wright (2006)).

Table 2 displays selected diagnostic data obtained from an application of this far field correction technique to the Hotel Torni footprint case study. The data indicates that, when the mean vertical velocity values are initially obtained from the LES solution, the $c_{i,j,k}$ scaling coefficients concentrate near the mean value of 0.9. The range of individual values naturally depends on the magnitude of the starting value $\langle \bar{w} \rangle_{i,j,k}$ in Eq. (9) which, in turn, depend on the chosen discretization of the target volume. But, it is important to emphasize that, although the far field correction method is guaranteed to yield a physically justifiable asymptotic behavior for the footprint, the combined effect of the correction method and the target volume discretization on the final footprint result cannot be inferred from Table 2. ~~For this purpose, the final assembly of the footprint must be accompanied by a sensitivity study.~~

This realignment of the coordinate rotation plane within a larger subvolume, when examined in contrast with the reference technique where the coordinate rotation is performed at full LES resolution, alters how some of the individual particles contribute to the footprint. However, this discrepancy gives rise to error that is distributed throughout the footprint domain. Therefore, the validity of the far field correction approach hinges upon the magnitude of this distributed error and its sensitivity to the target box discretization. The sensitivity can be established by carrying out the selective assembly of the footprint result for different levels of target box discretizations.

2.3.2 Selective assembly of the final footprint

Since its conception it has been clear that the piecewise post-processing approach must be endowed with the capacity to incorporate a sensitivity analysis phase into the final assembly of the footprint result. One of the driving motivators for developing the piecewise approach arose from the need to reduce the computational cost of collecting a large number of particle hits by a small an arbitrarily sized target volume around \mathbf{x}_M . However, the reduction can only be achieved by the piecewise post-processing approach if the sectional footprint results are allowed to be handled in an inadequately inspected and combined in a partially converged state. This is an important stipulation without which the proposed post-processing strategy fails to offer considerable computational savings.

Thus, the process of selectively assembling the final footprint result begins by first defining an inadequately converged initial footprint, which represents the desired preform at \mathbf{x}_M . This reference footprint, labelled f^{REF} , should be constructed from at least 10^6 particle entries to facilitate a sufficiently informative evaluation of sensitivities. The selection process proceeds by iteratively introducing partial contributions $f^{(l)}$ that are independent from f^{REF} and evaluating the sensitivity of the footprint distribution with respect to the selection of target box indices in \mathbb{K} (see Eq. (7)). The objective is to obtain a sufficiently converged footprint while minimizing the discrepancy between the constituent $f_{i,j,k}$ included in the final result. Thus, the selection process is quantitatively guided by the evaluation of 'deltas' between f^{REF} and $f^{(l)}$, constructed from a partial set $\mathbb{K}^{(l)}$ of target box indices, (i.e. $\Delta f^{(l)} = f^{\text{REF}} - f^{(l)}$) and utilizing a norm over a subdomain $\Omega_\star \subset \Omega$ encompassing only the near field (ea. 30% a fraction of the total length of the LES footprint domain nearest to \mathbf{x}_M) as a measure for the associated discrepancy. In this connection, it has been found most effective to define the extent of Ω_\star such that the integral over the near field domain constitutes approximately half of the total integral of the footprint: $\int_{\Omega_\star} f d\mathbf{x} \approx \frac{1}{2} \int_{\Omega} f d\mathbf{x}$. The near field norm is computed as

$$\|\Delta f^{(l)}\|_{2,\Omega_\star} = \left(\int_{\Omega_\star} \left| \Delta f^{(l)}(\mathbf{x}_f) \right|^2 d\mathbf{x}_f \right)^{1/2} \quad (10)$$

utilizing identically normalized footprints for this evaluation. In this study the footprints are normalized to yield $\int_{\Omega} f d\mathbf{x} = 1$.

The exclusion of the outer portion of the footprint domain allows the relevant deviations in the near field to be reflected in $\|\Delta f^{(l)}\|_{2,\Omega_\star}$ while avoiding the contamination due to poorly defined 'deltas' in the weakly converged outer region. In this study, the nearest 30% of the total length of the LES footprint domain is used to represent the near field as this yields for the normalized reference footprint $\int_{\Omega_\star} f^{\text{REF}} d\mathbf{x} = 0.51$. The search for the fitting contributions entails an iterative procedure, which

is described herein for the case study utilizing target volume discretization $n_x \times n_y \times n_z = 3 \times 5 \times 3$. The relevant intermediate results and $\|\Delta f^{(l)}\|_{2,\Omega_*}$ values are depicted in Fig. 6.

The process begins by setting at the 0th iteration $K^{(0)} = \{I_M, J_M, K_M\} \subset K$ where the indices correspond to the subvolume containing x_M . The obtained footprint $f^{(0)} = f_{I_M, J_M, K_M}$, ~~shown in Fig. 6,~~ is composed of ca. 4×10^5 particle entries ~~which is~~
5 ~~not sufficient, which does not meet the desired level of convergence~~ to act as f^{REF} . Thus, through a qualitative inspection, the original set is augmented $K^{(1)} = K^{(0)} + \{I_M, J_M \pm 1, K_M\}$ to yield $f^{(1)}$, which is chosen as the reference footprint.

The iterative process continues such that new candidate contributions $f^{(l)}$ are introduced incrementally in a radially outward progressing manner. This process is demonstrated in Fig. 6 where intermediate entries $f^{(2)} - f^{(6)}$ introduce differently combined additions in y -, x - and z -directions. For the sake of brevity, the example contributions combine a ~~relative-~~relatively large
10 number of $f_{i,j,k}$ entries. The decision to include a candidate contribution in the final assembly is done according to a criteria $\|\Delta f^{(l)}\|_{2,\Omega_*} \leq \|\Delta f\|_{\text{max}}$, where the maximum allowable discrepancy $\|\Delta f\|_{\text{max}}$ must be determined according to the case-specific requirements. In this case study, the threshold was set to include $f^{(3)}$ ~~in Fig. 6~~ such that $\|\Delta f\|_{\text{max}} = \|\Delta f^{(3)}\|_{2,\Omega_*}$.
Naturally this threshold level can be varied to generate alternative footprint assemblies (with different levels of convergence), which allow, in the context of the considered footprint applications, the impact and uncertainty associated with these choices
15 to be transparently monitored.

The obtained final result, which combines the earlier accepted additions, features 20/45 of all subvolume contributions. The obtained footprint exhibits adequate convergence also in the far field having been constructed from ca. 8×10^6 particle entries. Subsequently, the lowest vertical ($k = 1$) plane and the farthest ($i = 3$) plane were completely excluded from K in the final assembly. ~~The obtained footprint exhibits adequate convergence also in the far field having been constructed from ca.~~
20 ~~8×10^6 particle entries~~ This outcome indicates that the contributions with the largest deviations arise from $\mathcal{V}_{i,j,k}$ that are either in contact with the tower structure or in its wake region. Therefore, this suggests that it is not advantageous to set up \mathcal{V}_T such that the building structure cuts into the volume.

As long as the individual subsets contain a sufficient number of particle data entries ($> 10^5$), as is required by the far field correction approach, it is beneficial to discretize the target volume as finely as possible (by increasing n_x , n_y , and n_z) as it
25 enables a more flexible and fine-tuned assembly and permits a more accurate coordinate rotation treatment. ~~When~~ Depending on the total number of particles gathered during the simulation and the size of the target box, the maximum number of admissible subvolumes is expected to be $\sim 10^2$. At this scale, when the post-processing techniques are implemented with appropriate automations, the ~~labor-~~labour cost is not significantly affected by the total number of subvolumes. ~~A juxtaposition of three final results~~ However, when the standard coordinate rotation is applied and the target volume discretization is carried out
30 in accordance with the LES grid resolution, the total number of subvolumes readily exceeds 10^3 (as in this example study $n_x \times n_y \times n_z = 1920$) the selective assembly phase becomes prohibitively laboursome. But, given sufficient computational capacity, the far field correction approach can be exploited to perform the selective assembly process to provide a description for an effective target volume $\mathcal{V}_{\text{Teff}} = \sum_{i,j,k \in K} \mathcal{V}_{i,j,k}$, which can subsequently be reassembled from the finely resolved $\mathcal{V}_{i,j,k}$ contributions. Such result is depicted in Fig. 7 together with two footprints that are obtained through an identically guided
35 selection process ~~,but-utilizing-~~ utilizing far field correction (FFC) with different combinations of n_x , n_y , and n_z ~~is depicted~~

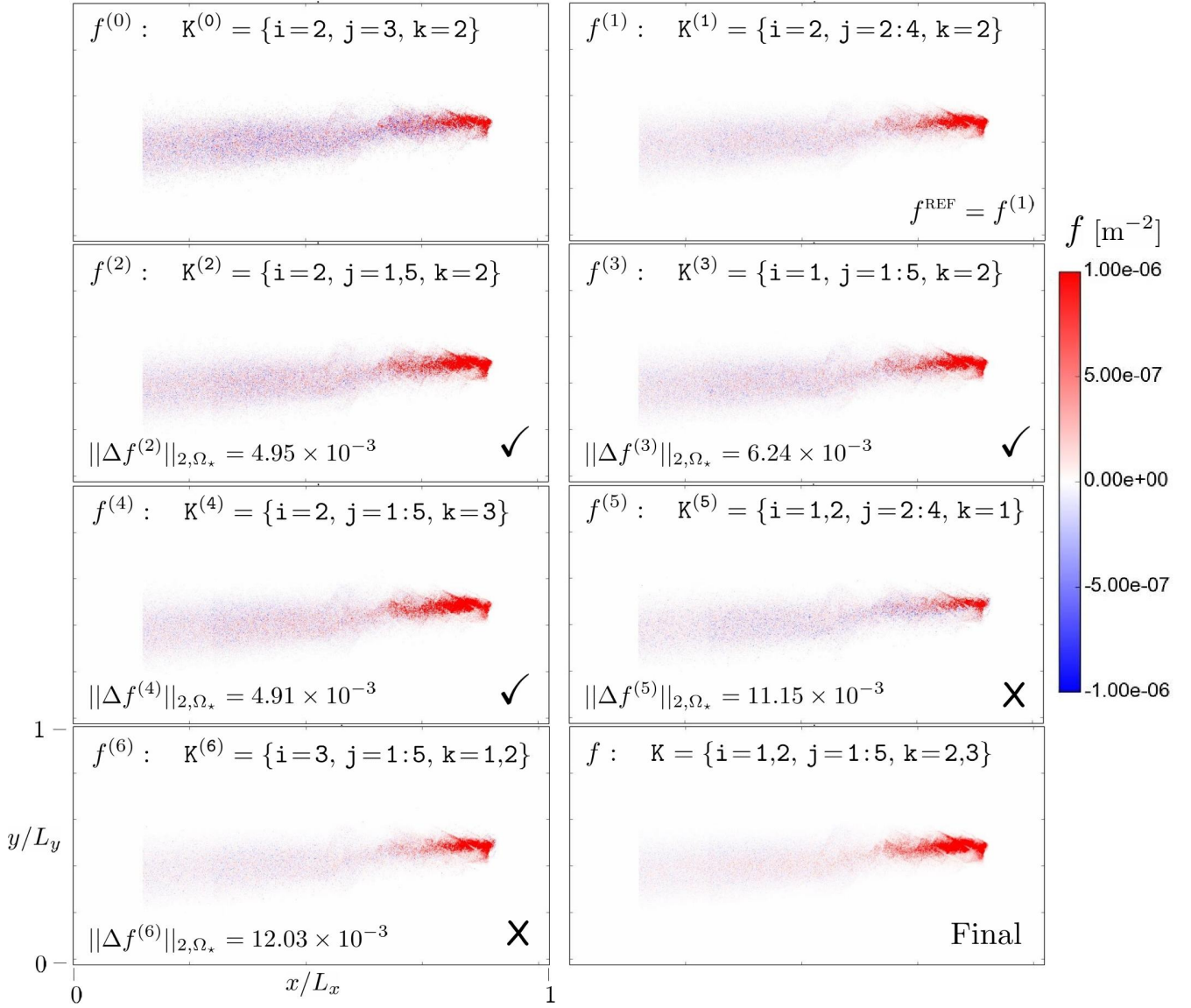


Figure 6. Illustration of the selective assembly of the final footprint for $n_x \times n_y \times n_z = 3 \times 5 \times 3 = 45$. Values of $\|\Delta f^{(l)}\|_{2,\Omega_*}$ indicating discrepancy between f^{REF} and $f^{(l)}$ are shown where applicable. Acceptable candidates are marked by ✓ and the rejected by X. Note the use of short-hand notation, e.g. $1:3 = 1, 2, 3$.

in Fig. 7. The comparison reveals that the differences between the three results are remarkably insignificant, which also indicates indicating, first, that a significant part of the error contributions, introduced by the far field correction method, have a compensating effect and, second, that the obtained footprint is not highly sensitive to the sensor placement despite the variable

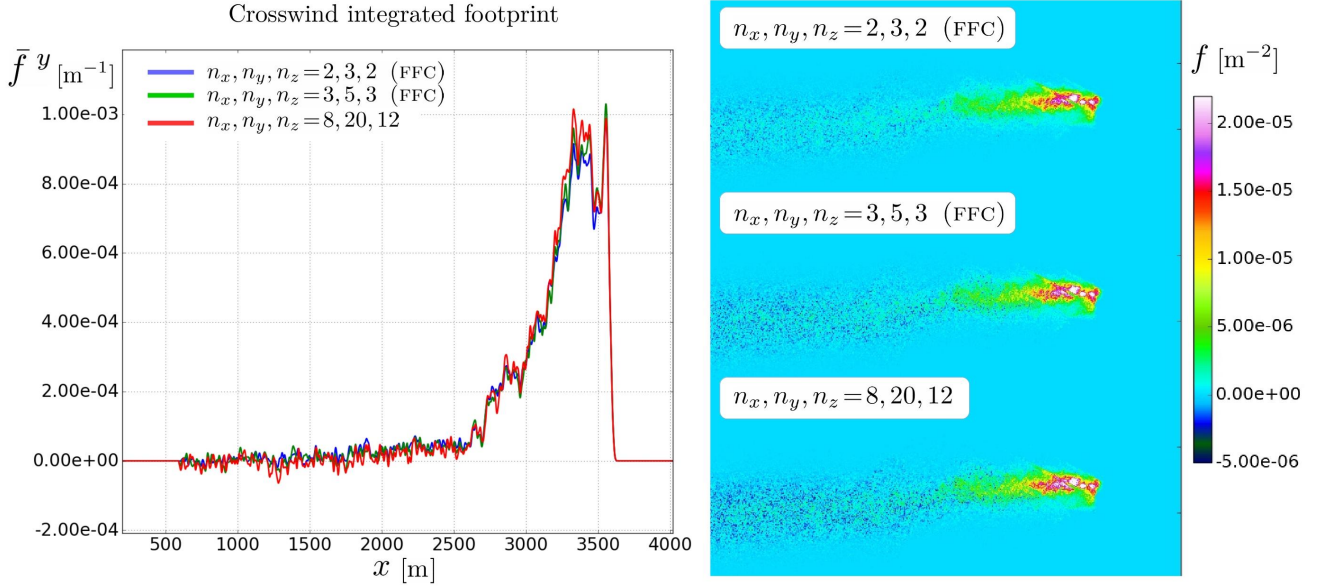


Figure 7. The final Comparison of identically normalized footprint results-distributions (right) and their crosswind integrations (left) obtained either by applying 1) the far field correction (FFC) method and selective assembly or 2) the standard coordinate rotation while utilizing the uniform 1 m resolution of the LES grid in the target volume discretization. The subvolume contributions included in the $n_x, n_y, n_z = 8, 20, 12$ result were selected to correspond with different the effective target volume discretizations $\mathcal{V}_{\text{eff}} = \sum_{i,j,k \in \mathcal{K}} \mathcal{V}_{i,j,k}$ determined via the selective assembly for $n_x, n_y, n_z = 3, 5, 3$.

flow conditions around the sensor. This demonstrates the utility and robustness of the selective piecewise post-processing approach. From here on the presented results correspond to the $n_x = 3, n_y = 5, n_z = 3$ target volume discretization level.

2.3.3 Outline of the procedure

Taking into account the far field correction procedure, the post-processing procedure for evaluating a footprint from a LES-LS

5 obtained dataset can be described in the following steps:

1. Split the original dataset \mathcal{S} into $n_x \times n_y \times n_z$ number of subsets ~~labeled~~ labelled $\mathcal{s}_{i,j,k}$ according to a Cartesian division of the target volume \mathcal{V}_T .
2. Evaluate an approximate footprint in a piecewise manner by applying Eq. (4) for each subset $\mathcal{s}_{i,j,k}$ and assemble the result according to Eq. (7) by selecting all i, j, k values. (Here it is possible to use inaccurate data for the evaluation of $\langle \bar{w} \rangle_{i,j,k}$ as the objective is only to identify the far field)
3. Inspect the approximate footprint result to identify the extent of the far field (by specifying β) where the footprint reaches an asymptotic level to a good approximation and specify β for the purpose of constructing $\mathbf{r}_{i,j,k}$

4. Evaluate the sectional footprints $f_{i,j,k}$ from corresponding $\mathbf{s}_{i,j,k}$ subsets by applying Eq. (4) with $\langle \bar{w} \rangle_{i,j,k}^*$ evaluated through far field correction approach as follows:

- (a) Select initial guess for $c_{i,j,k}^o$ and $\langle \bar{w} \rangle_{i,j,k}^o$, and utilizing the data from $\mathbf{r}_{i,j,k}$ compute the initial sectional footprint $f_{i,j,k} = f_{i,j,k}(c_{i,j,k}^o)$ and the corresponding far field integral $J^o = \left| \int_{\Omega_\beta} f_{i,j,k}(c_{i,j,k}^o) d\mathbf{x} \right|$
- (b) Perturb the coefficient $c_{i,j,k} = c_{i,j,k}^o + dc$ (initially with a guessed perturbation dc) and, using $\langle \bar{w} \rangle_{i,j,k}^* = c_{i,j,k} \langle \bar{w} \rangle_{i,j,k}^o$ and the data from $\mathbf{r}_{i,j,k}$, compute $f_{i,j,k} = f_{i,j,k}(c_{i,j,k})$ and $J = \left| \int_{\Omega_\beta} f_{i,j,k}(c_{i,j,k}) d\mathbf{x} \right|$
- (c) Exit the loop if $J < \varepsilon$, where ε specifies the tolerance
- (d) Compute derivative $\frac{dJ}{dc} = \frac{(J-J^o)}{dc}$ and specify a new perturbation from $dc = -\gamma \frac{dJ}{dc}$, where $\gamma > 0$ is a scaling parameter which, in this context, has been experimentally set to ensure that the minimization problems converge sufficiently
- (e) Set $J^o = J$, $c_{i,j,k}^o = c_{i,j,k}$ and return to step 4b

5. Select the appropriate set K of i, j, k combinations employing sensitivity analysis procedure in Section 2.3.2

6. Assemble the final footprint via Eq. (7)

It is noteworthy that in step 2 for the approximate footprint evaluation and in step 4a for the initialization of the optimization loop, the values for the mean vertical velocities $\langle \bar{w} \rangle_{i,j,k}$ do not have to be accurate. Therefore, the use of vertical velocity data from LES can be omitted altogether, which simplifies the case setup and data handling considerably. The approximate values can be obtained more simply, for instance, by evaluating the mean of incident vertical velocity value from particle data in each $\mathbf{s}_{i,j,k}$.

3 Result assessment

The proposed methodology ~~that is~~ founded on high resolution LES-LS analysis and a piecewise post-processing approach has been shown to be a reliable, robust and accessible, although computationally expensive, approach to generate topography-sensitive footprints in real urban applications. Since the underlying motivation for this development effort sprung from the need to evaluate the potential error that may arise when analytical, closed-form footprint models are applied to urban flux measurements, this work also proposes a technique to approximate the magnitude of this error in the absence of field validation studies. This approach hinges on the assumption that, in a real urban application, a topography-sensitive footprint obtained through a highly resolved LES-LS analysis features a higher level of accuracy and a lower level of uncertainty than any available closed-form footprint model.

The proposed assessment technique compares the obtained LES-LS footprint result to an analytical model, which belongs to the group of closed-form models that would otherwise be employed in similar studies, by applying the footprint distributions to the land cover classification LC dataset in Fig. 1 that is presented in the same resolution as the topography height. In the following demonstration the closed-form footprint model by Korman and Meixner (2001) (KM), which is widely utilized in

Table 3. Parameters used in the Korman and Meixner footprint model.

KM model parameter	Value	Explanation
Measurement height	60 m <u>55.1 m</u>	Hotel Torni measurement height <u>building height (a.g.l) – displacement height (Nordbo et al., 2013)</u>
Mean wind speed	4.86 m s^{-1}	EC measurement
Standard deviation of v	0.75 m s^{-1}	EC measurement
Roughness length (z_0)	2.4 m <u>1.4 m</u>	10% of avg. building height (24 m) <u>(Nordbo et al., 2013)</u>
Obukhov length	10000 m	Neutrally stratified boundary layer, EC measurement

the EC community (e.g., Christen et al., 2011; Kotthaus and Grimmond, 2012; Nordbo et al., 2013), is used as an example analytical model. This choice is subjective and implies no preference over other available footprint models (e.g., Kljun et al., 2015; Horst, 2001). The KM model parameters and their specific values are declared in Table 3. The mean wind speed and the standard deviation of the crosswind component are extracted from Hotel Torni’s anemometer measurements gathered on September 9th 2012 during the same 30 min time frame that was used to specify the meteorological conditions for the LES simulation (see Section 2.2.2).

A preliminary comparison between the obtained LES-LS and KM footprint distributions, f_{LES} and f_{KM} respectively, in the considered Hotel Torni case study draws immediate attention to the apparent differences that become discernible from the juxtaposition displayed in Fig. 8. The shown distributions have been normalized to yield $\int_{\Omega} f d\mathbf{x}' = 1$ to aid the comparison.

The LES-LS generated footprint exhibits complex, unpredictable probability distribution and a more pronounced spatial confinement, lacking the gradual asymptotic ~~behavior~~ behaviour of analytical models. Particularly the crosswind diffusion of the system is clearly over-predicted by the KM model even when the measurement height is taken to be the height of the sensor above the ground level minus the displacement height of 14.9 m according to Nordbo et al. (2013). This value does take into account the surrounding buildings, but the ground level at Hotel Torni is 15 m above the sea level, which is also represented in the source area. This exhibits the difficulty in choosing one representative parameter value for an analytical model applied to a real urban setting. The most evident deviations occur in the near field, where the f_{LES} exhibits strong local variations between building tops and street canyons. Moreover, examining the crosswind integrated footprints in Fig. 9 reveals how \bar{f}_{LES}^y reacts abruptly to changes in the example urban landscape, ~~leveling~~ levelling off to a shallow ~~deceding~~ descending slope much earlier than the gradually declining curve of \bar{f}_{KM}^y . Thus, the presented comparison in the context of this case study succeeds in laying bare the nontrivial nature of urban footprints and highlights the importance of utilizing a high-resolution LES-LS approach to examine complex urban EC measurement sites.

3.1 Virtual assessment technique

The comparative technique proposed for assessing the potential error that may arise if urban measurements are interpreted with closed-form footprint models, exploits the land cover dataset under the assumption that the LC distribution conveys the inherent urban heterogeneity sufficiently. Under this premise, the LC distribution can be adopted as a model distribution

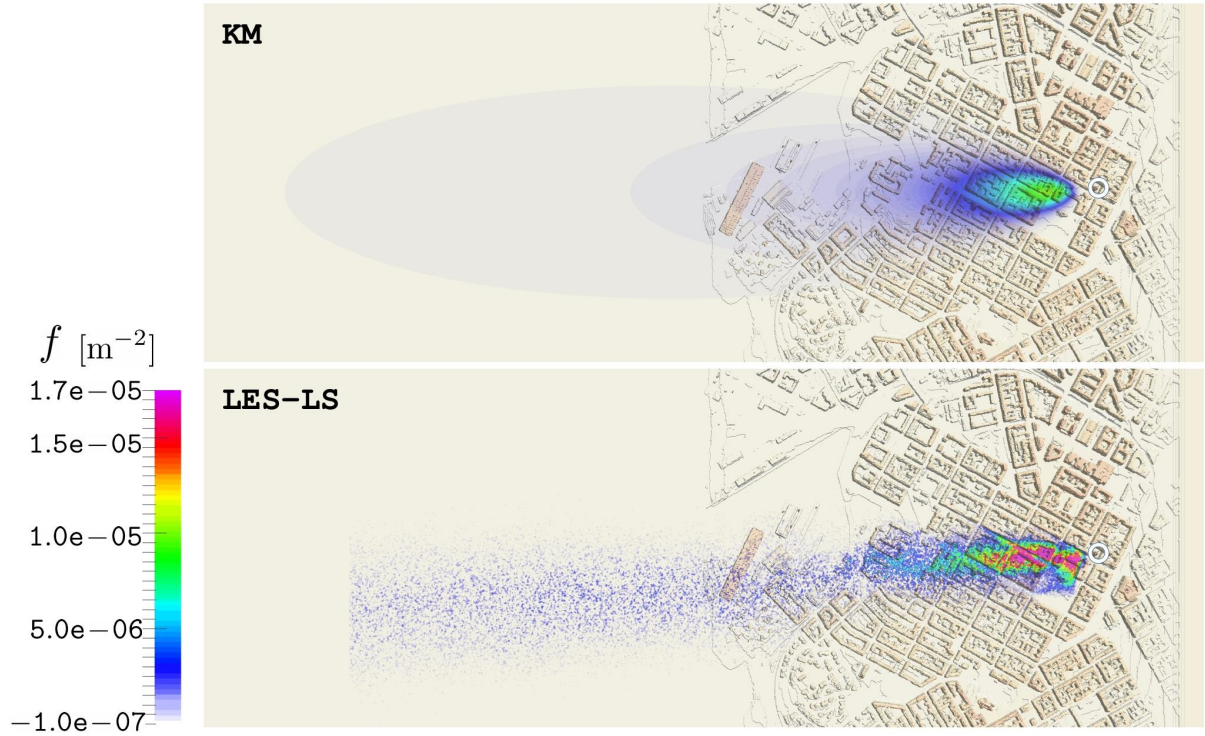


Figure 8. Comparison of identically normalized LES-LS (below) and KM (above) footprint distributions merged with the urban topography model of Helsinki. The location of the EC sensor (Hotel Torni) building is indicated with a white circle.

of sources Q such that each e^{th} land cover type is assigned a constant mean source strength $\langle Q_e \rangle = \text{const}$. Thus, under this simplification the description of a measurement η in Eq. (1) can be decomposed as:

$$\eta(\mathbf{x}_M) = \sum_{e=0}^{N_{LC}} \eta_e(\mathbf{x}_M) = \sum_{e=0}^{N_{LC}} \int_{\Omega_e} f(\mathbf{x}_M, \mathbf{x}') \langle Q_e \rangle d\mathbf{x}', \quad (11)$$

where N_{LC} is the number of different land cover types in the dataset and the constituents of η are given by

$$\begin{aligned} \eta_e(\mathbf{x}_M) &= \int_{\Omega_e} f(\mathbf{x}_M, \mathbf{x}') \langle Q_e \rangle d\mathbf{x}' = \langle Q_e \rangle \int_{\Omega_e} f(\mathbf{x}_M, \mathbf{x}') d\mathbf{x}' \\ &= \langle Q_e \rangle A_e. \end{aligned} \quad (12)$$

Here, A_e is the footprint weighted surface area of the e^{th} land cover type and

$$\Omega_e = \int_{\Omega} \frac{LC_e}{|LC_e|} d\mathbf{x}' \quad (13)$$

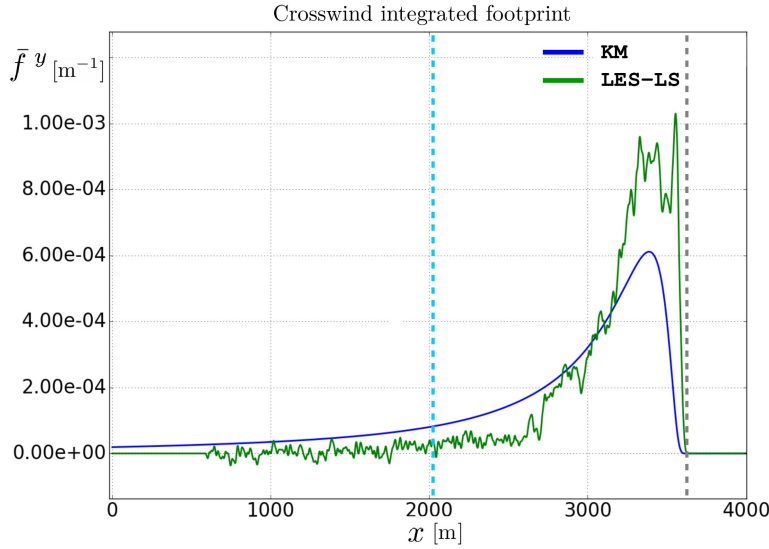


Figure 9. Comparison of normalized, crosswind integrated LES-LS and KM footprints. A light blue dashed line indicates the start of urban topography and the gray dashed line ~~and the white circles mark~~ marks the location of the EC sensor.

defines the corresponding subdomain that ~~satisfy~~ leads to

$$\Omega = \sum_{e=0}^{N_{LC}} \Omega_e. \quad (14)$$

Now it is convenient to define two measures that facilitate a meaningful comparison between different footprints: The fractional contribution to the measurement from each constituent

$$r_e = \frac{\eta_e}{\sum_e \eta_e}, \quad (15)$$

which require that $\langle Q_e \rangle$ are assigned for each land cover type, and the source-area fraction

$$a_e = \frac{A_e}{\sum_e A_e} \quad (16)$$

that provide an easy estimate of the footprint's coverage independent of source strength information (or assuming identical $\langle Q_e \rangle$ for all e). For proper assessment, these two fractions should be inspected in tandem.

10 The comparison is carried out by extracting the area corresponding to the LES domain from the LC dataset, shown in Fig. 10, which has been modified to include the relevant streets in the vicinity of the footprint for the purpose of including the effect of traffic emissions into the demonstration. The obtained f_{LES} and f_{KM} footprints are then projected onto this raster map to compute the required integrals and fractions.

15 A pie-chart of source-area fractions a_e from Eq. (16) for the Hotel Torni's flux footprint is demonstrated in Fig. 11, which provides an informative overview on the differences in source-area coverages. The far field corrected ($n_x, n_y, n_z = 3, 5, 3$)

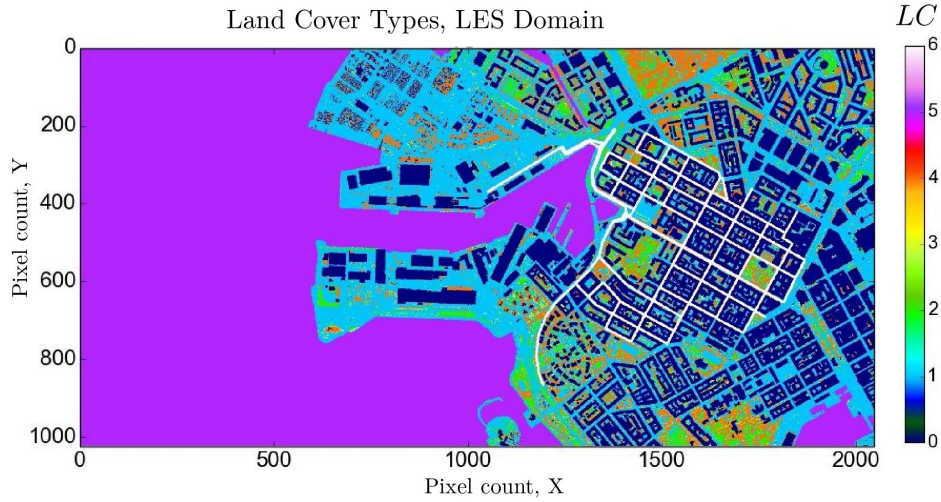


Figure 10. Raster map of land cover types, LC , within the LES domain. The original surface type classification data in Fig. 1 has been augmented by adding streets ($LC = 6$) to the relevant footprint area.

and the highly resolved ($n_x, n_y, n_z = 8, 20, 12$) piecewise assembled LES-LS footprints agree within 0.2%. In this particular example, the analytical KM model gathers a significantly larger contribution from the far-field, which is reflected in the significantly higher coverage of water surface area. On the other hand, assigning each land cover type its corresponding – potentially fictional – mean source strength $\langle Q_e \rangle$ and evaluating the fractional contributions r_e from Eq. (15) provides means to carry out simplified virtual experiments concerning particular EC measurements. To demonstrate with an example, consider CO₂ flux measurements in a hypothetical situation where 95% of the CO₂ emissions originate from traffic (i.e. from roads) and 5% arise from other anthropogenic sources, which are emitted through ventilation outlets on the building roofs. For the sake of simplicity, the ~~contribution~~ contribution from water area is ~~assumed~~ assumed-considered negligible and vegetation is ~~assumed~~ assumed-considered to act as a uniformly distributed sink over the land, which does not influence the ratio of source contributions in the measurement. Utilizing an undefined reference source strength $\langle Q_{\text{ref}} \rangle$, the sources are expressed as $\langle Q_e \rangle = \lambda_e \langle Q_{\text{ref}} \rangle$, where the weights satisfy $\sum_e \lambda_e = 1$. Thus, in this example $\lambda_0 = 0.05$ for buildings and $\lambda_6 = 0.95$ for roads.

~~The measurement decomposition for~~ For this contrived situation ~~is illustrated as a pie-chart in Fig. ?? which reflects how the interrelationship of the considered source-areas dictate the outcome~~ the fractional contributions obtained with the LES-LS footprint become $r_0 = 17.8\%$ and $r_6 = 82.2\%$, whereas applying the Korman-Meixner footprint yields $r_0 = 16.6\%$ and $r_6 = 83.4\%$. In this example, while the two footprints have distinctly different source-area fractions for buildings and roads, their ratios are close since $(A_6/A_0)_{\text{LES}} = 1.1 (A_6/A_0)_{\text{KM}}$ as seen in Fig. 11, which is the reason for obtaining such comparable measurement decompositions.

Repeating the introduced assessment technique for multiple representative meteorological conditions, paves the way for a numerical approach that allows the obtained urban flux measurements to be interpreted either differently or with improved

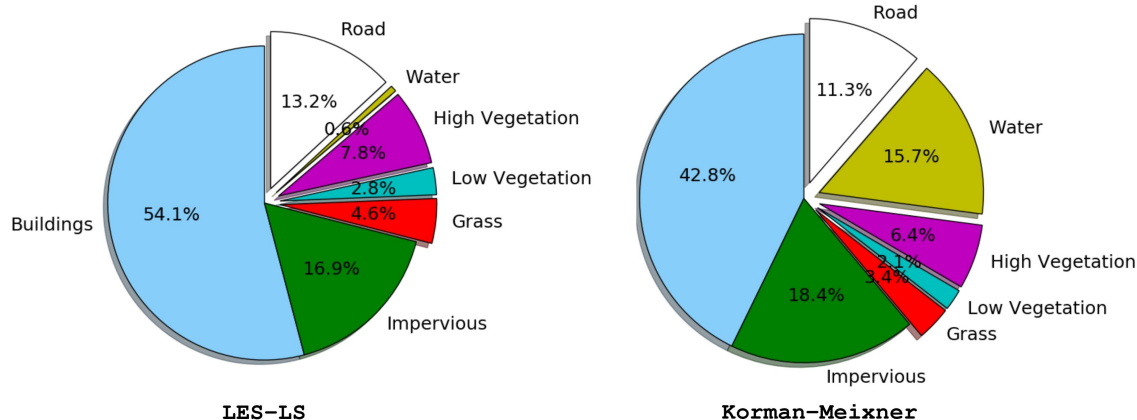


Figure 11. Comparison of source-area fractions a_e resulting from applying f_{LES} and f_{KM} to the raster map of land cover types in Fig. 10.

confidence. Naturally, having access to real source strength distributions opens up the ability to utilize LES-LS footprints (or positively assessed analytical footprints) to carry out detailed emission inventories, (e.g. Christen et al., 2011).

4 Summary and conclusions

The utility of eddy covariance method in measuring the exchanges of mass, heat and momentum between the urban landscape and the overlying atmosphere largely depends of the ability to determine the effective source-area, or footprint, of the measurement. In situations where the heterogeneity of the surface becomes relevant, like for urban landscape, and the structures surrounding the measurement site can no longer be considered as a homogeneous layer of roughness elements, the use of analytical footprint models becomes highly suspect. In order to diminish the resulting uncertainties and to obtain the ability to assess the applicability of analytical models, the ability to evaluate complex footprints with high resolution becomes essential.

This work presents a numerical methodology to generate topography-sensitive footprints for real urban EC flux measurement sites. This methodology is based on high-resolution LES-LS analysis where the simulation domain features a detailed description of the urban topography and accounts for the entire vertical extent of the atmospheric boundary layer. The online-coupled LS model within the LES solver is employed to simulate a constant release of inert gas emissions from the potential upwind source-area of the considered EC sensor. The necessary data for the footprint generation is obtained from the LES-LS analysis by setting up a finite target volume around the sensor location and, over a sufficiently long simulation period, gathering a record of particles that hit this target. ~~The obtained dataset is subsequently post-processed to yield To~~ To generate an estimate for the footprint, but flux footprint, this dataset is subjected to a post-processing procedure that involves a coordinate rotation step, which eliminates the effect of the mean flow on the flux evaluation. But, if the considered EC sensor is mounted on a building (instead of a conventional tower-like structure) in the vicinity of which strong mean flow gradients occur, standard post-processing techniques fail to produce ~~a physically meaningful footprint~~ physically meaningful footprints unless the target volume size is reduced to correspond with the LES grid spacing. This inevitably leads to a prohibitive

computational cost. Therefore, this work introduces a robust piecewise post-processing strategy, which facilitates the evaluation of ~~the footprint footprints~~ despite the added complexity. The piecewise approach involves splitting the original dataset into a series of subsets which are all independently post-processed to yield incompletely converged intermediate footprint estimates. ~~Eventually~~The splitting is done by applying Cartesian discretization to the target volume in order to generate a series of subvolumes that correspond to the subsets. However, to facilitate a sufficiently accurate coordinate rotation treatment in the presence of strong gradients, the size of these subvolumes must also be reduced to match the resolution of the LES grid. This causes their number, and hence the number of intermediate sectional footprints, to become excessive motivating the development of a new approximate scheme labelled far field correction, which enables the subvolume size to be increased and the post-processing effort to be reduced significantly. In the piecewise post-processing approach, the final ~~completely converged footprint is,~~ completely converged, footprint is eventually selectively assembled from the obtained set of intermediates.

The methodology is demonstrated in a real urban application where the objective is to compute a highly resolved topography-sensitive footprint for the ~~SMEAR-III~~ Hotel Torni EC flux measurement sensor mounted on the roof of a tall building situated in the downtown area of Helsinki, Finland. The EC sensor's measurement height is 60 m above the ground level and 36 m above the surrounding mean building height (24 m). The meteorological conditions for the LES simulation were adopted from measurements on September 9th 2012 when south-westerly winds and a neutrally stratified boundary layer of 300 m height were recorded. A detailed topography map of Helsinki at 2 m resolution from Nordbo et al. (2015) was utilized to construct the topography model for the LES-LS domain. The resolution of the computational mesh was set at 1 m throughout the domain to ensure that the relevant turbulent structures even at level of street canyons were captured. An arbitrarily sized target box for sampling the Lagrangian particle hits was setup around the sensor location, which collected ca. 19×10^6 particle hits during 3 hours of simulation time. The obtained dataset was subjected to the proposed piecewise post-processing method, demonstrating the functionality of the approach under various user-selected specifications. The obtained footprint stood in stark contrast to gradual ellipse shaped analytical footprints: The distribution exhibited strong adherence to the building block arrangement in the near field where the weight distribution changed abruptly between roof tops and street canyons. In comparison to the Korman and Meixner (2001) (KM) model, the LES-LS footprint also exhibited stronger contribution from the near field, but more rapidly diminishing contribution from the far field.

This paper also introduces an accessible technique to employ the obtained high-resolution topography-sensitive urban footprint in estimating the potential error that may arise when an analytical footprint model is used to interpret urban EC measurements. The underlying stipulation for this method is that it does not require knowledge of real source strength distributions. Thus, it is proposed that a detailed land cover type classification (*LC*) dataset is utilized as a model source strength distribution map for the urban surroundings assuming that it reflects the heterogeneity of the urban conditions sufficiently. Projecting a footprint distribution result onto such *LC* map enables the evaluation fractional contributions, which indicate how each land cover type is represented in the measurement. This procedure provides a comparative technique to assess the effective deviations between different footprints. The demonstrated comparison between the LES-LS and analytical KM footprints in the EC measurement setup in Helsinki revealed substantial differences in the fractional contributions when all land cover types are considered equally relevant. ~~However, when~~The technique can also be applied by considering only selected land cover types

and assigning each of them a variable source strength. This approach is demonstrated through a simple example, which mimics a hypothetical CO₂ flux measurement, where the effective source-area ~~was~~ is limited to only roads and buildings ~~to mimic a situation for CO₂ flux measurements, the fractional contributions became closely comparable despite the striking differences in the footprints.~~

5 The context of this paper is limited to laying out the new methodology for generating urban footprints and exploiting them in the assessment of analytical models. It is evident that changes in the meteorological and anthropogenic conditions will influence the results and a proper assessment of the applicability of analytical models at a given EC measurement site will require that these conditions are varied necessitating numerous footprint evaluations. This paper lays the numerical groundwork for such future investigations.

10 5 Code availability

PALM is an open source software released under GNU General Public License (v3) and freely available upon registration at <https://palm.muk.uni-hannover.de/trac>. [This study features version 4.0 and revision 1929](#). The source code for handling the target box particle data acquisition [in PALM](#) is available by request from the corresponding author. The Python scripts used for the topography raster map manipulations and footprint post-processing and analysis are part of a larger library [named](#)

15 [P4UL](#), which is primarily developed and maintained by the author. ~~Currently access to the code repositories is granted by request only.~~ [The code repository for version 1.0-beta is accessible via](#) <http://doi.org/10.5281/zenodo.804851>. Python is an open source programming language, which is freely available at www.python.org and www.numpy.org. The visualizations are performed with ParaView, an open-source, multi-platform data analysis and visualization application, which is freely available at www.paraview.org.

20 *Acknowledgements.* This study was supported by Academy of Finland (grant no. 284701, 1281255, 277664, and 281255). The computing resources were provided by CSC - IT Center for Science Ltd., Finland (grand challenge project gc2618). The author would like to sincerely acknowledge Curtis Wood for the meteorological data acquisition and Tiina Markkanen, Siegfried Raasch, Andrey Glazynov and Juha Lento for the help and advice they provided.

References

- Anderson, W.: Amplitude modulation of streamwise velocity fluctuations in the roughness sublayer: Evidence from large-eddy simulations, *Journal of Fluid Mechanics*, 789, 567–588, doi:10.1017/jfm.2015.744, 2016.
- Aubinet, M., Vesala, T., and Papale, D., eds.: *Eddy covariance. A Practical Guide to Measurement and Data Analysis*, Springer, 2012.
- 5 Christen, A., Coops, N., Crawford, B., Kellett, R., Liss, K., Olchovski, I., Tooke, T., van der Laan, M., and Voogt, J.: Validation of modeled carbon-dioxide emissions from an urban neighborhood with direct eddy-covariance measurements., *Atmospheric Environment*, 45, 6057–6069, 2011.
- Deardorff, J.: Stratocumulus-capped mixed layers derived from a three-dimensional model, *Bound-Lay. Meteorol.*, 18, 495–527, 1980.
- Finnigan, J.: The footprint concept in complex terrain, *Agric. For. Meteorol.*, 127, 117–129, 2004.
- 10 Giometto, M., Christen, A., Meneveau, C., Fang, J., Krafczyk, M., and Parlange, M.: Spatial Characteristics of Roughness Sublayer Mean Flow and Turbulence Over a Realistic Urban Surface, *Boundary-Layer Meteorology*, pp. 1–28, 2016.
- Glazunov, A., Rannik, U., Stepanenko, V., Lykosov, V., Auvinen, M., Vesala, T., and Mammarella, I.: Large-eddy simulation and stochastic modeling of Lagrangian particles for footprint determination in the stable boundary layer, *Geoscientific Model Development*, 9, 2925–2949, doi:10.5194/gmd-9-2925-2016, <http://www.geosci-model-dev.net/9/2925/2016/>, 2016.
- 15 Hellsten, A., Luukkonen, S., Steinfeld, G., Kanani, F., Markkanen, T., Järvi, L., Vesala, T., and Raasch, S.: Footprint evaluation for flux and concentration measurements for an urban-like canopy with coupled Lagrangian stochastic and large-eddy simulation models., *Bound-Lay. Meteorol.*, 157, 191–217, 2015.
- Horst, T.: Comment on Footprint Analysis: A Closed Analytical Solution Based on Height-Dependent Profiles of Wind Speed and Eddy Viscosity’, *Boundary-layer meteorology*, 101, 435–447, 2001.
- 20 Horst, T. and Weil, J.: Footprint estimation for scalar flux measurements in the atmospheric surface layer, *Boundary-Layer Meteorology*, 59, 279–296, 1992.
- Järvi, L., Hannuniemi, H., Hussein, T., Junninen, H., Aalto, P. P., Hillamo, R., Mäkelä, T., Keronen, P., Siivola, E., Vesala, T., et al.: The urban measurement station SMEAR III: Continuous monitoring of air pollution and surface-atmosphere interactions in Helsinki, Finland., *Boreal Environment Research*, 14, 2009.
- 25 Kataoka, H. and Mizuno, M.: Numerical flow computation around aeroelastic 3D square cylinder using inflow turbulence, *Wind and Structures, An International Journal*, 5, 379–392, 2002.
- Kljun, N., Calanca, P., Rotach, M. W., and Schmid, H. P.: A simple two-dimensional parameterisation for Flux Footprint Prediction (FFP), *Geoscientific Model Development*, 8, 3695–3713, doi:10.5194/gmd-8-3695-2015, <http://www.geosci-model-dev.net/8/3695/2015/>, 2015.
- Korman, R. and Meixner, F.: An analytical footprint model for non-neutral stratification, *Bound-Lay. Meteorol.*, 99, 207–224, 2001.
- 30 Kotthaus, S. and Grimmond, C.: Identification of Micro-scale Anthropogenic CO₂, heat and moisture sources - Processing eddy covariance fluxes for a dense urban environment, *Atmospheric Environment*, 57, 301–316, 2012.
- Kurbanmuradov, O., Rannik, Ü., Sabelfeld, K., and Vesala, T.: Direct and Adjoint Monte Carlo Algorithms for the Footprint Problem, *Monte Carlo Methods and Applications*, 5, 85–112, 1999.
- Kurppa, M., Nordbo, A., Haapanala, S., and Järvi, L.: Effect of seasonal variability and land use on particle number and {CO₂} exchange in Helsinki, Finland, *Urban Climate*, 13, 94 – 109, doi:<http://dx.doi.org/10.1016/j.uclim.2015.07.006>, <http://www.sciencedirect.com/science/article/pii/S2212095515300122>, 2015.

- Letzel, M., Helmke, C., Ng, E., An, X., Lai, A., and Raasch, S.: LES case study on pedestrian level ventilation in two neighbourhoods in Hong Kong, *Meteorologische Zeitschrift*, 21, 575–589, 2012.
- Lund, T., Wu, X., and Squires, K.: Generation of Turbulent Inflow Data for Spatially-Developing Boundary Layer Simulations, *Journal of Computational Physics*, 140, 233–258, doi:10.1006/jcph.1998.5882, 1998.
- 5 Maronga, B., Gryschka, M., Heinze, R., Hoffmann, F., Kanani-Sühring, F., Keck, M., Ketelsen, K., Letzel, M. O., Sühring, M., and Raasch, S.: The Parallelized Large-Eddy Simulation Model PALM version 4.0 for atmospheric and oceanic flows: model formulation, recent developments, and future perspectives, *Geosci. Model Dev.*, pp. 1539–1637, doi:10.5194/gmd-8-2515-2015, 2015.
- Moeng, C. and Wyngaard, J.: Spectral analysis of large-eddy simulations of the convective boundary layer, *Journal of the Atmospheric Sciences*, 45, 3573–3587, 1988.
- 10 Nocedal, J. and Wright, S.: Numerical Optimization, Springer Series in Operations Research, Springer, 2nd edition edn., 2006.
- Nordbo, A., Järvi, L., Haapanala, S., Moilanen, J., and Vesala, T.: Intra-city variation in urban morphology and turbulence structure in Helsinki, Finland, *Boundary-Layer Meteorology*, 146, 469–496, 2013.
- Nordbo, A., Karsisto, P., Matikainen, L., Wood, C., and Järvi, L.: Urban surface cover determined with airborne lidar at 2 m resolution - implications for surface energy balance modelling., *Urban Climate*, pp. 52 – 72, 2015.
- 15 Pasquill, F.: Some aspects of boundary layer description, *Quarterly Journal of the Royal Meteorological Society*, 98, 469–494, doi:10.1002/qj.49709841702, <http://dx.doi.org/10.1002/qj.49709841702>, 1972.
- Pasquill, F. and Smith, F.: Atmospheric Diffusion, Wiley, New York, 3rd edn., 1983.
- Raasch, S. and Schröter, M.: PALM – A large-eddy simulation model performing on massively parallel computers, *Meteorologische Zeitschrift*, 10, 363–372, 2001.
- 20 Rannik, Ü., Aubinet, M., Kurbanmuradov, O., Sabelfeld, K., Markkanen, T., and Vesala, T.: Footprint analysis for measurements over a heterogeneous forest, *Boundary-Layer Meteorology*, 97, 137–166, 2000.
- Rannik, Ü., Markkanen, T., Raittila, J., Hari, P., and Vesala, T.: Turbulence statistics inside and over forest: Influence on footprint prediction, *Boundary-Layer Meteorology*, 109, 163–189, 2003.
- Saiki, E., Moeng, C., and Sullivan, P.: Large-eddy simulation of the stably stratified planetary boundary layer, *Bound-Lay. Meteorol.*, 95, 1–30, 2000.
- 25 Schmid, H.: Footprint modelling for vegetation atmosphere exchange studies: a review and perspective, *Agric. For. Meteorol.*, 113, 159–183, 2002.
- Sogachev, A., Menzhulin, G. V., Heimann, M., and Lloyd, J.: A simple three-dimensional canopy–planetary boundary layer simulation model for scalar concentrations and fluxes, *Tellus B*, 54, 784–819, 2002.
- 30 Sogachev, A., Panferov, O., Gravenhorst, G., and Vesala, T.: Numerical analysis of flux footprints for different landscapes, *Theoretical and Applied Climatology*, 80, 169–185, 2005.
- Steinfeld, G., Raasch, S., and Markkanen, T.: Footprints in homogeneously and heterogeneously driven boundary layers derived from a Lagrangian stochastic particle model embedded into large-eddy simulation, *Bound-Lay. Meteorol.*, 129, 225–248, 2008.
- Vesala, T., Järvi, L., Launiainen, S., Sogachev, A., Rannik, Ü., Mammarella, I., Siivola, E., Keronen, P., Rinne, J., Riikonen, A., et al.: Surface–atmosphere interactions over complex urban terrain in Helsinki, Finland, *Tellus B*, 60, 188–199, 2008.
- 35 Weil, J., Sullivan, P., and Moeng, C.: The use of large-eddy simulations in Lagrangian particle dispersion models, *Journal of the Atmospheric Sciences*, 61, 2877–2887, 2004.
- Wilczak, J. M., Oncley, S., and Stage, S.: Sonic anemometer tilt correction algorithms, *Boundary-Layer Meteorology*, 99, 127–150, 2001.

Wood, C. R., Järvi, L., Kouznetsov, R. D., Nordbo, A., Joffre, S., Drebs, A., Vihma, T., Hirsikko, A., Suomi, I., Fortelius, C., O'Connor, E., Moiseev, D., Haapanala, S., Moilanen, J., Kangas, M., Karppinen, A., Vesala, T., and Kukkonen, J.: An Overview of the Urban Boundary Layer Atmosphere Network in Helsinki., *Bull. Amer. Meteor. Soc.*, 94, 1675–1690, doi:<http://dx.doi.org/10.1175/BAMS-D-12-00146.1>, 2013.