

1 **The effect of water storage change in annual evapotranspiration**
2 **estimation in humid catchments based on the Budyko framework**

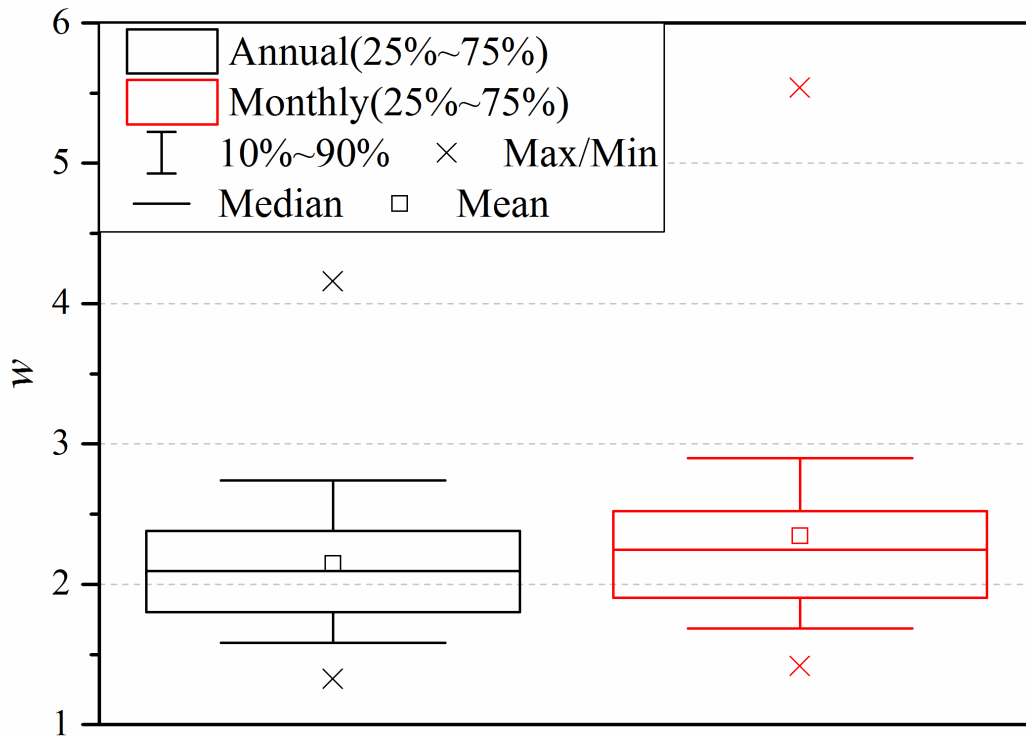
3

4 Tingting Wang^{1,2}, Fubao Sun^{1,2,3*}, Hong Wang¹, Wenbin Liu¹, Hao Wang⁴

5

6 **Supporting Figure**

7



8

9 Figure S1 The boxplot of calibrated w in Fu's equation (black), and based on extended

10 Budyko equation (red).

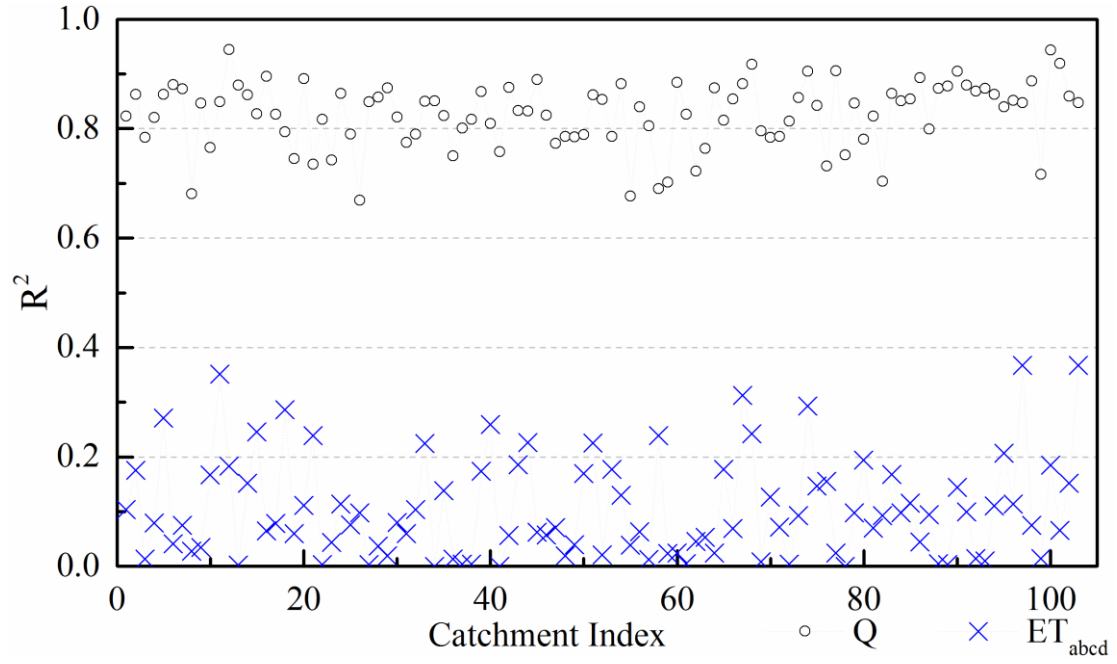


Figure S2 The R^2 between observed and simulated results from abcd model, i.e., Q_{obs} v.s. Q_{abcd} and ET_{wb} v.s. ET_{abcd} in 102 humid catchments over China.

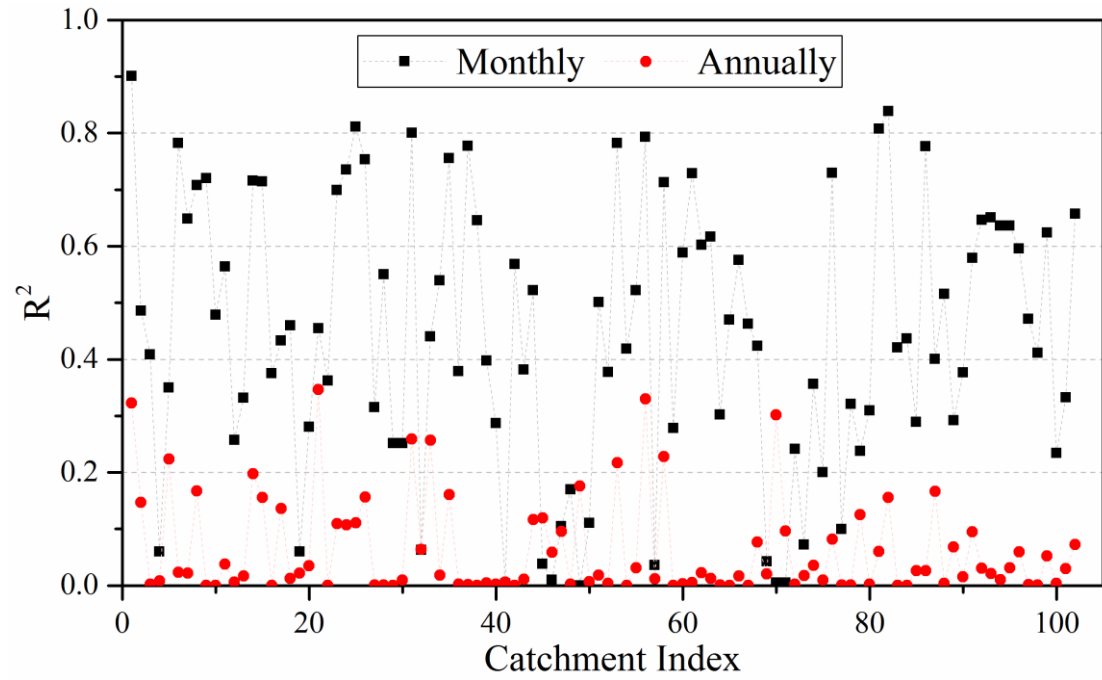
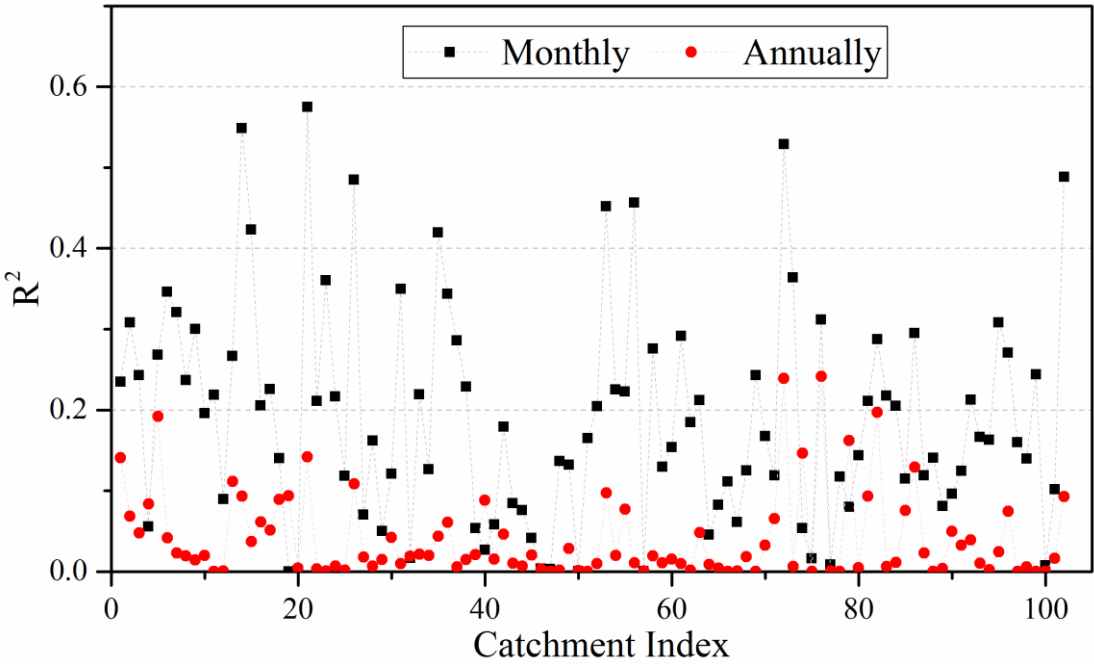


Figure S3 The R^2 between monthly ET_{wb} and ET_{Budyko} , which is estimated using extended Budyko equation, and that aggregated to annual timescale, the ΔS is the soil

19 moisture change from VIC output.

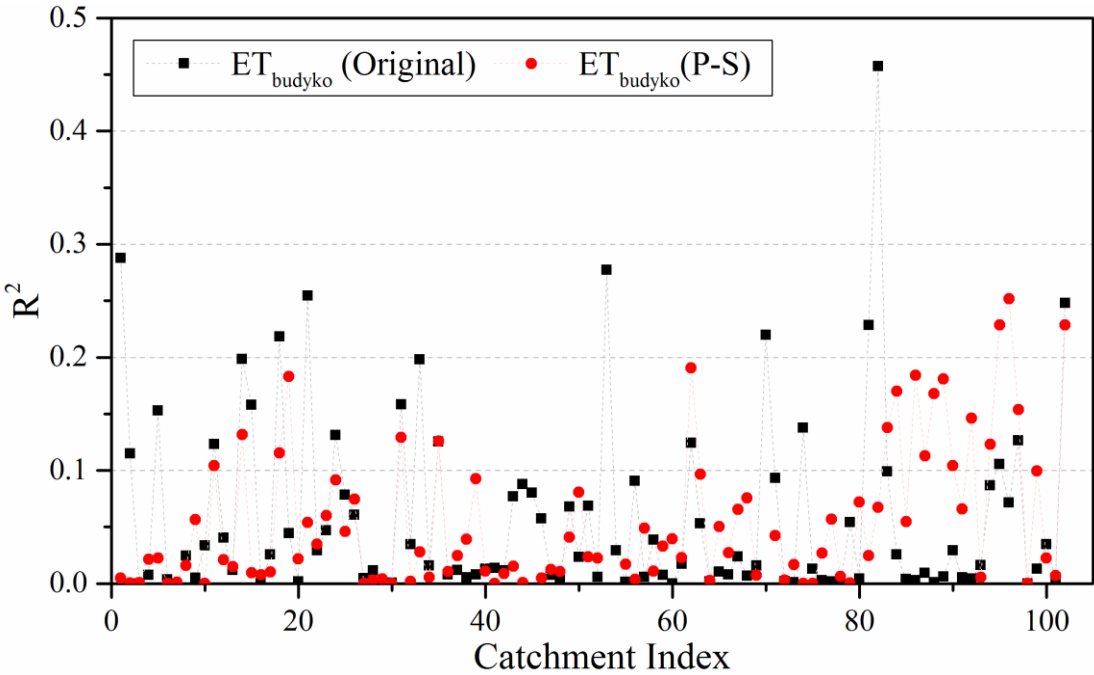
20



21

22 Figure S4 The R^2 between monthly ET_{wb} and ET_{Budyko} , which is estimated using
23 extended Budyko equation, and that aggregated to annual timescale, the ΔS is the soil
24 moisture change from GLDAS output.

25

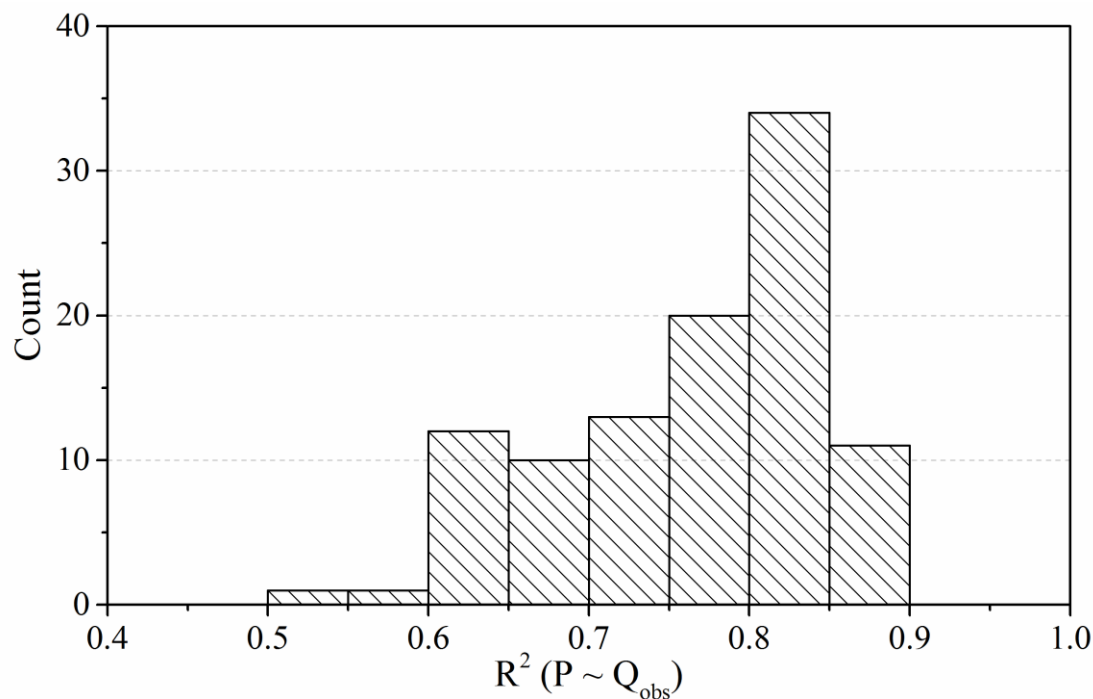


26

27 Figure S5 The R^2 between annual ET_{wb} and ET_{Budyko} (black, marked as original), and

28 the corresponding results using annual $P-\Delta S$ as equivalent P in Fu's equation (red,
 29 marked as $P-S$), the ΔS is the abcd output.

30



31

32 Figure S6 The statistical information of catchments grouped by R^2 between annual P
 33 and Q_{obs} with linearly regression.

34