

Interactive comment on “When probabilistic seismic hazard climbs volcanoes: the Mt Etna case, Italy. Part I: model components for sources parametrization” by Raffaele Azzaro et al.

Raffaele Azzaro et al.

raffaele.azzaro@ingv.it

Received and published: 15 September 2017

The comment was uploaded in the form of a supplement:

<https://www.nat-hazards-earth-syst-sci-discuss.net/nhess-2017-127/nhess-2017-127-AC3-supplement.zip>

Interactive comment on Nat. Hazards Earth Syst. Sci. Discuss., <https://doi.org/10.5194/nhess-2017-127>, 2017.

[Printer-friendly version](#)

[Discussion paper](#)



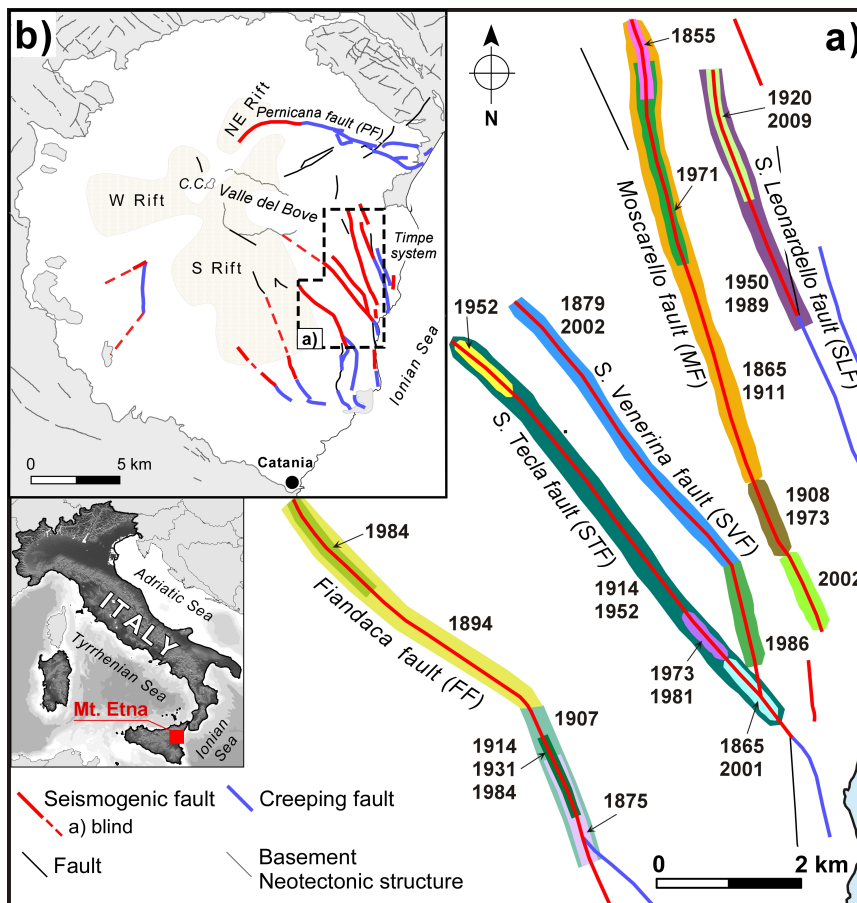


Fig. 1.

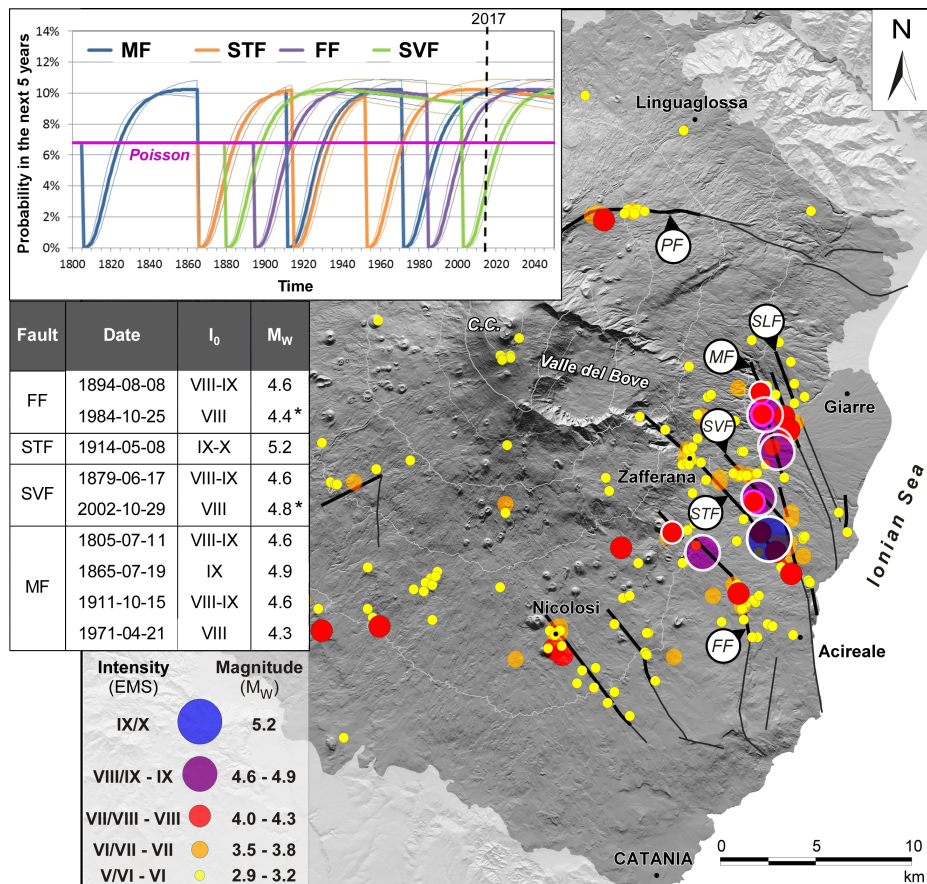


Fig. 2.

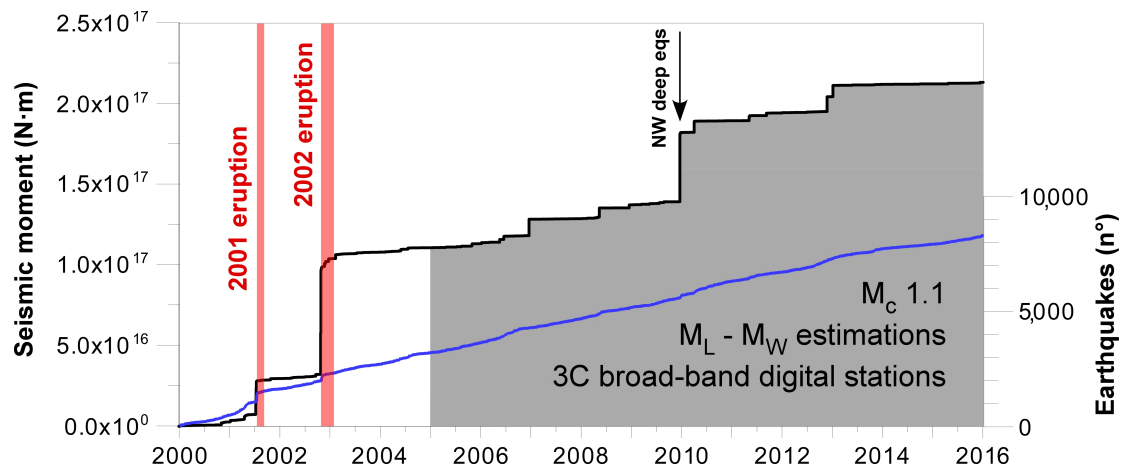


Fig. 3.

[Printer-friendly version](#)

[Discussion paper](#)



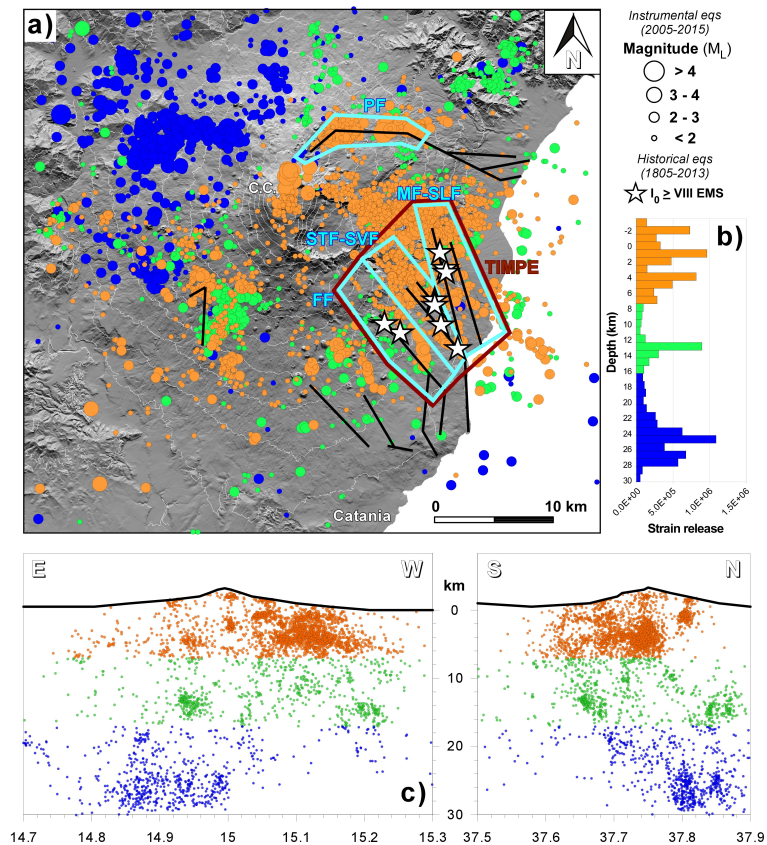


Fig. 4.

Printer-friendly version

Discussion paper



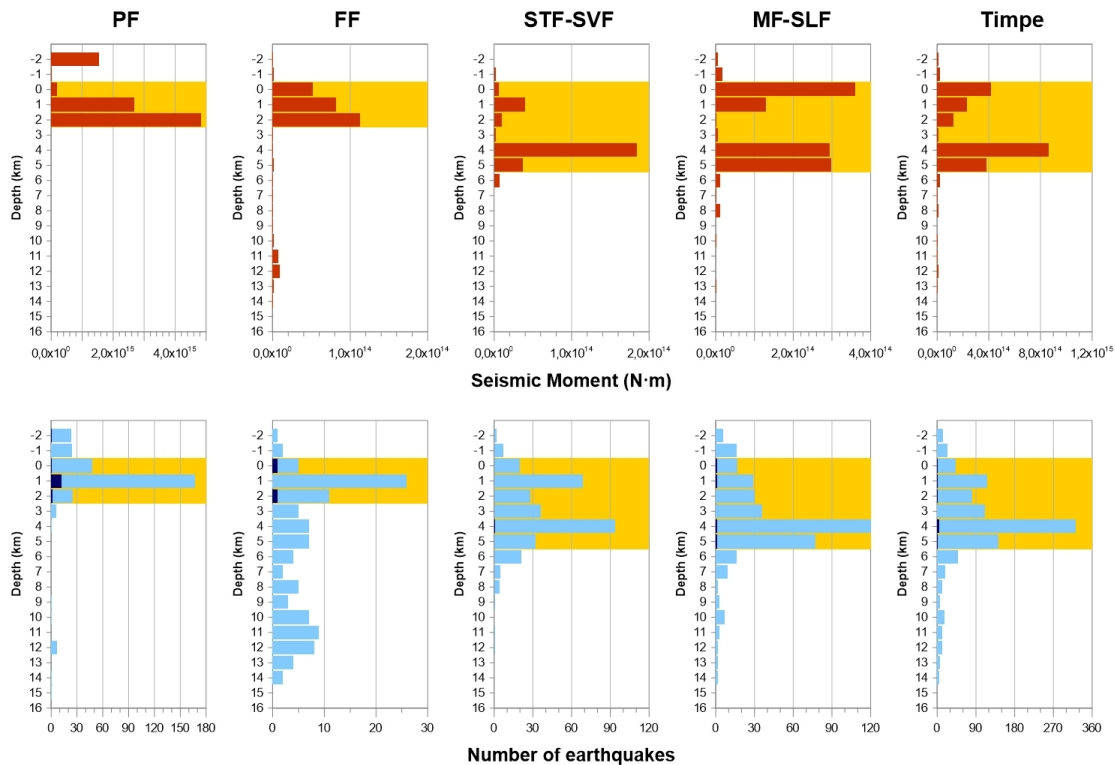


Fig. 5.

[Printer-friendly version](#)

[Discussion paper](#)



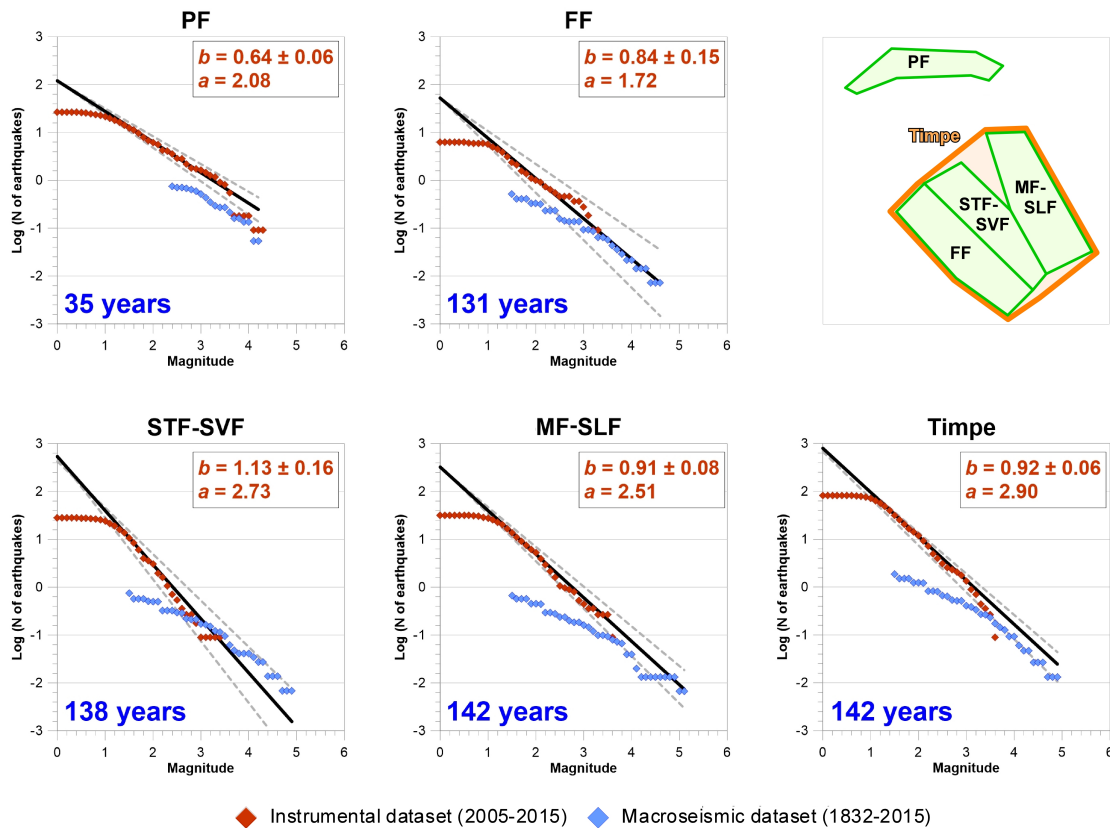


Fig. 6.

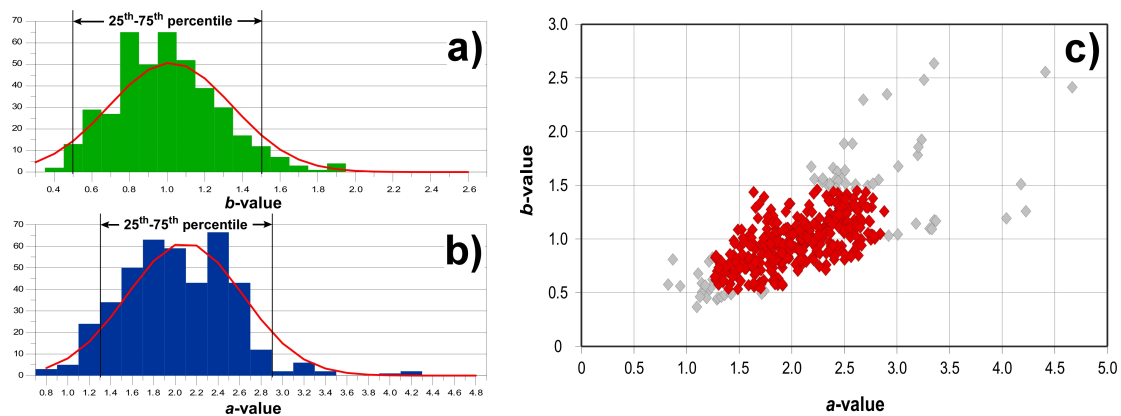


Fig. 7.

[Printer-friendly version](#)

[Discussion paper](#)



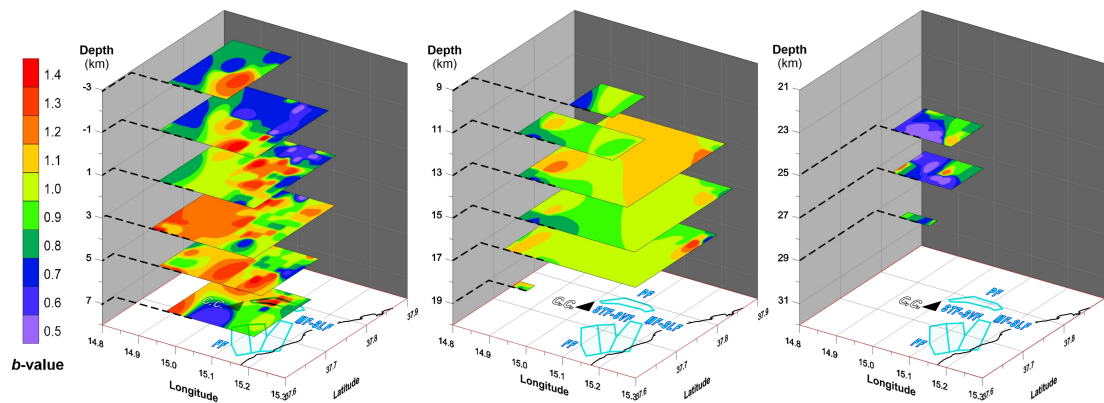


Fig. 8.

[Printer-friendly version](#)

[Discussion paper](#)



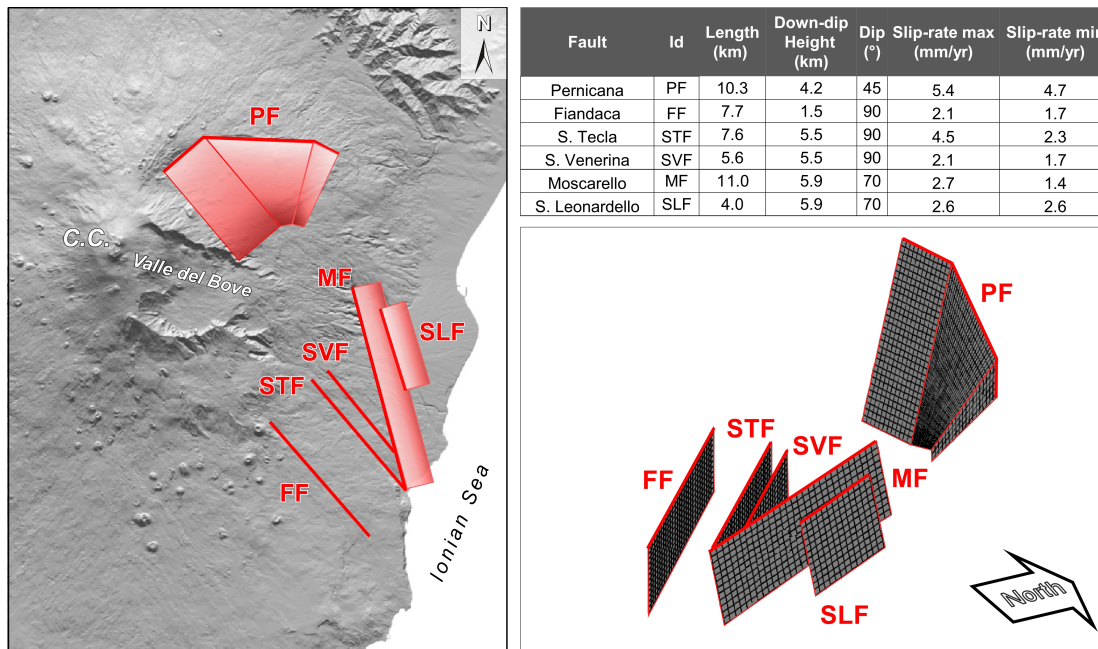


Fig. 9.

[Printer-friendly version](#)

[Discussion paper](#)



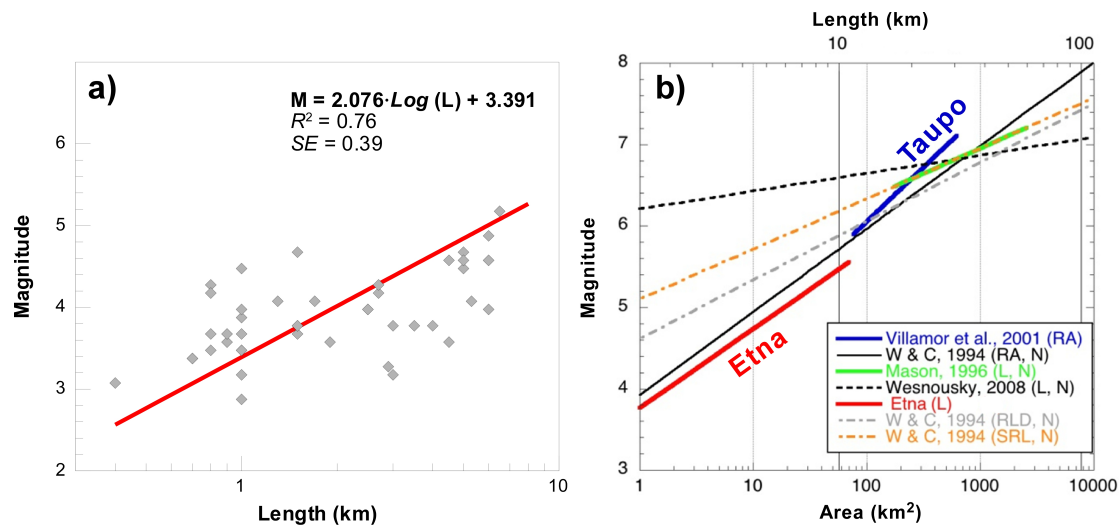


Fig. 10.

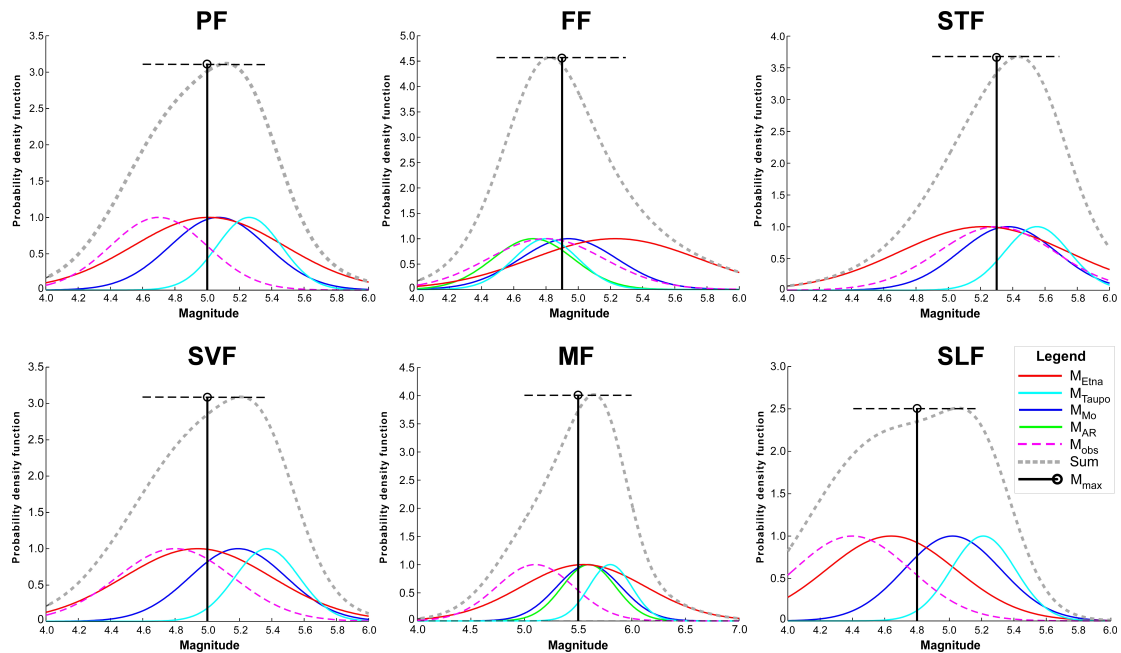


Fig. 11.

[Printer-friendly version](#)

[Discussion paper](#)



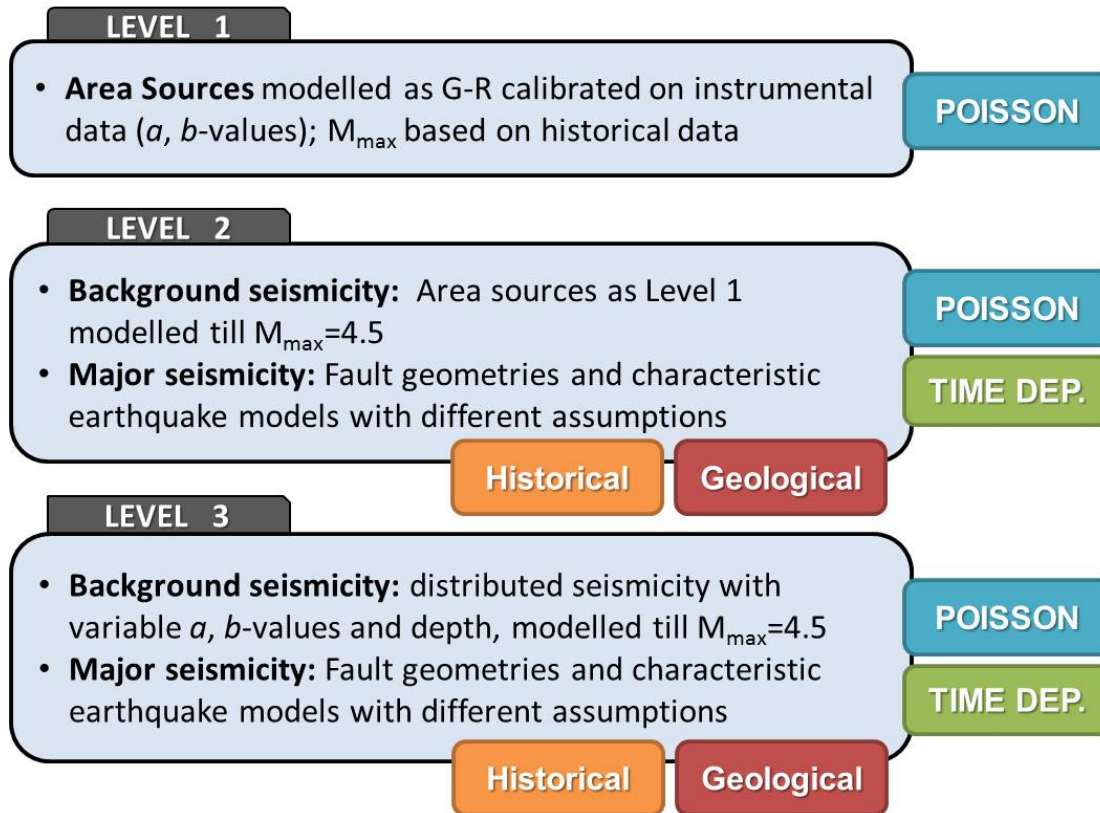


Fig. 12.

[Printer-friendly version](#)

[Discussion paper](#)

