

## ***Interactive comment on “When probabilistic seismic hazard climbs volcanoes: the Mt Etna case, Italy. Part I: model components for sources parametrization” by Raffaele Azzaro et al.***

**Raffaele Azzaro et al.**

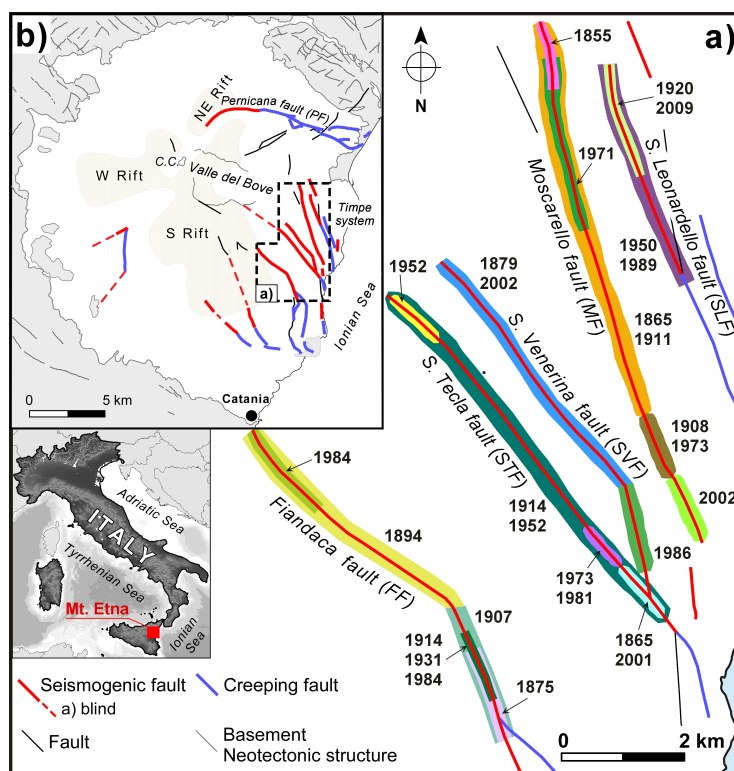
raffaele.azzaro@ingv.it

Received and published: 15 September 2017

The comment was uploaded in the form of a supplement:  
<https://www.nat-hazards-earth-syst-sci-discuss.net/nhess-2017-127/nhess-2017-127-AC3-supplement.zip>

Interactive comment on Nat. Hazards Earth Syst. Sci. Discuss., <https://doi.org/10.5194/nhess-2017-127, 2017.>

C1



**Fig. 1.**

C2

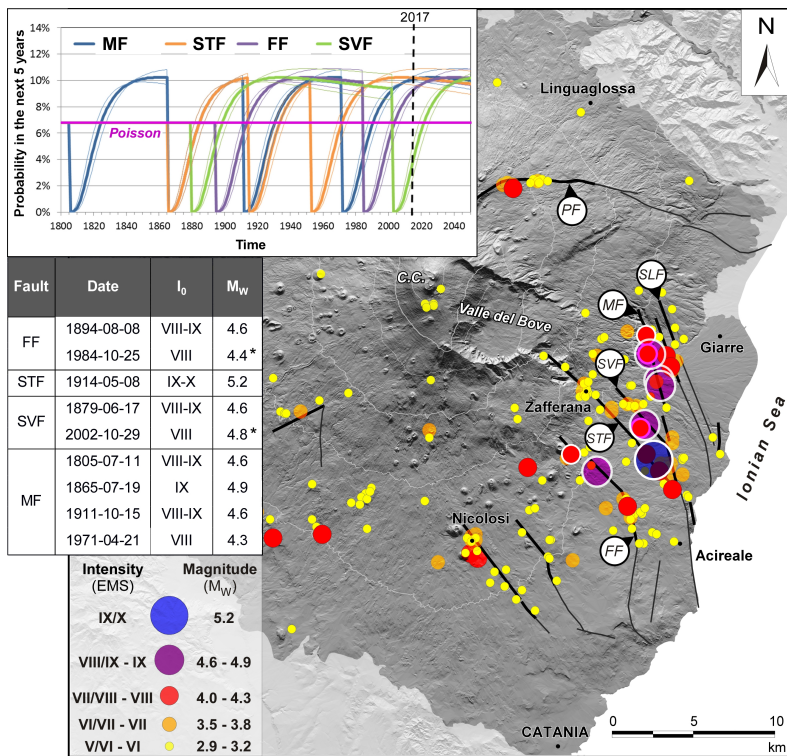


Fig. 2.

C3

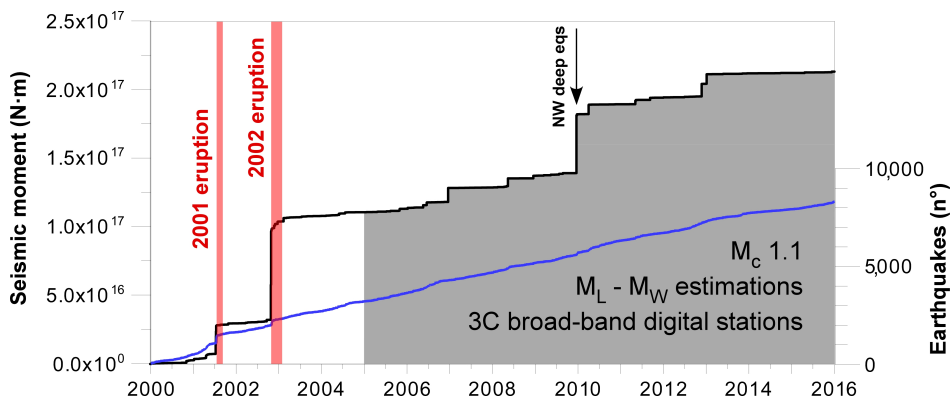


Fig. 3.

C4

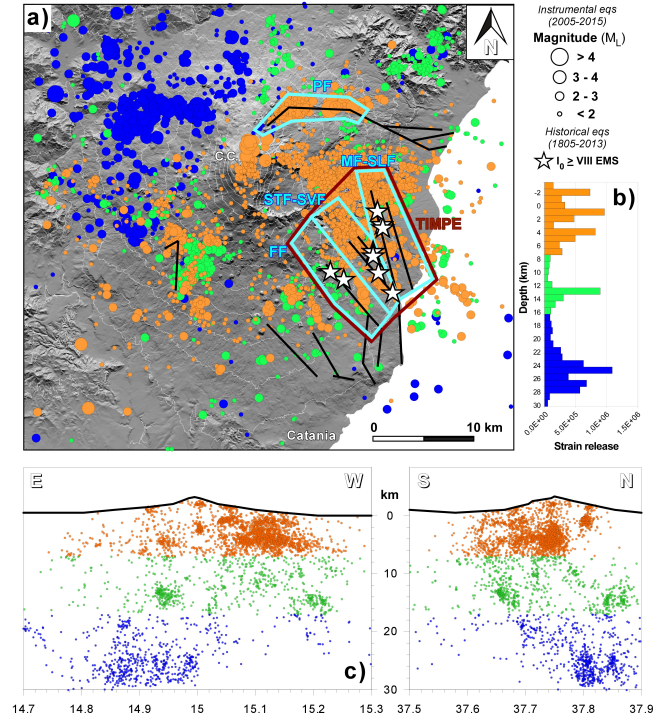


Fig. 4.

C5

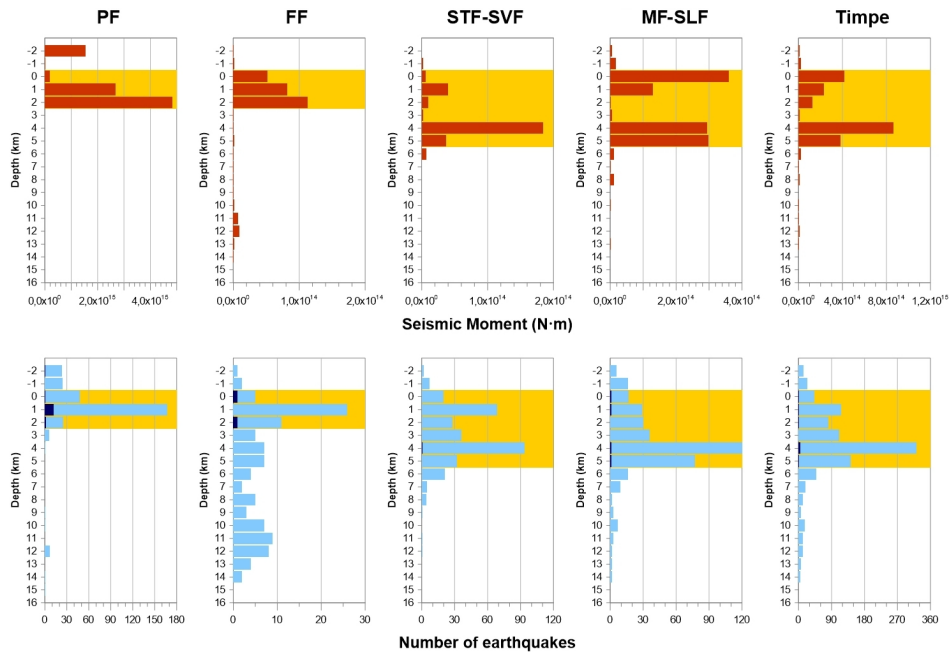


Fig. 5.

C6

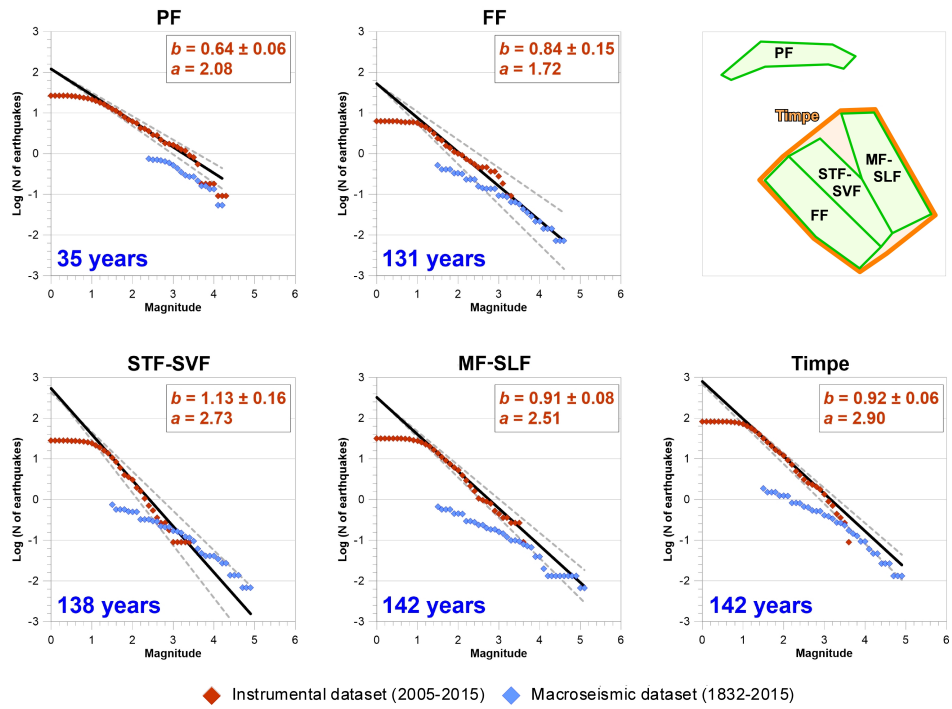


Fig. 6.

C7

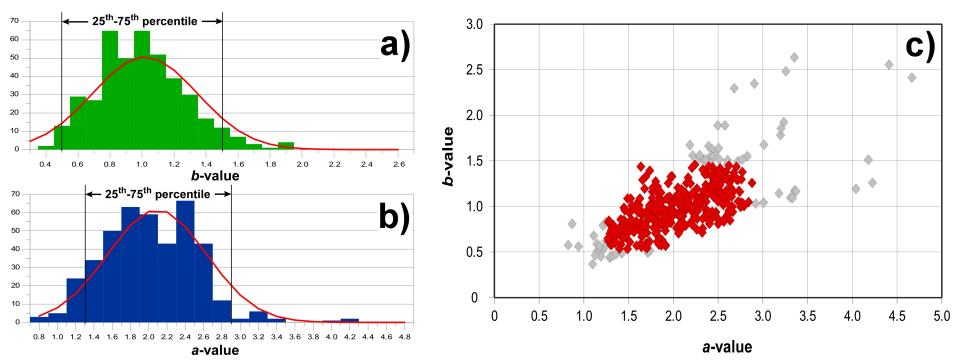


Fig. 7.

C8

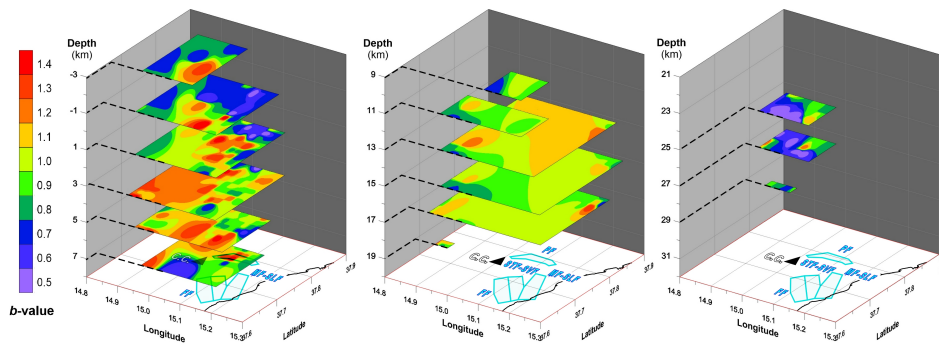


Fig. 8.

C9

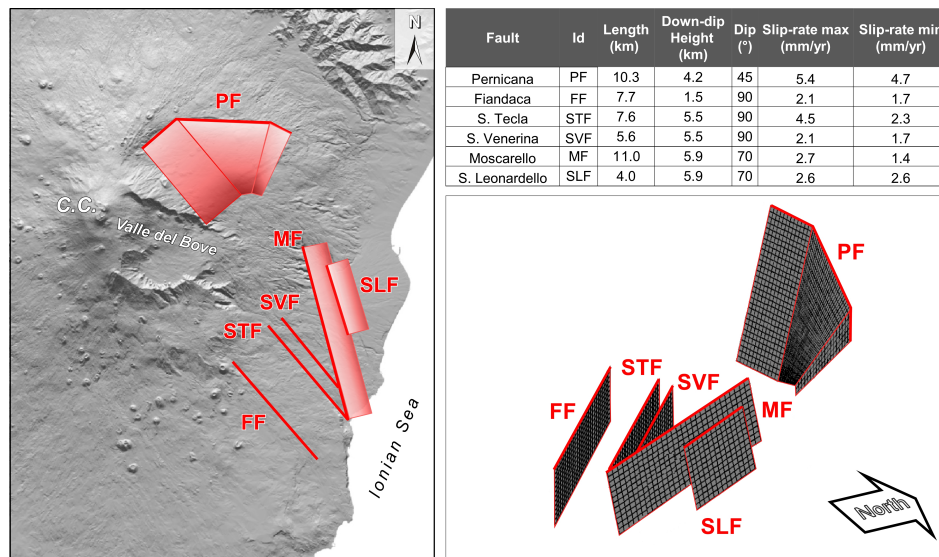


Fig. 9.

C10

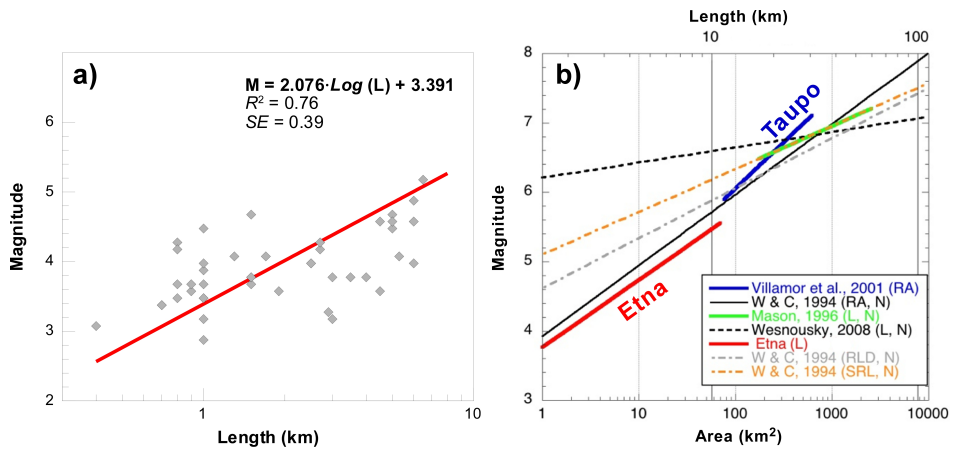


Fig. 10.

C11

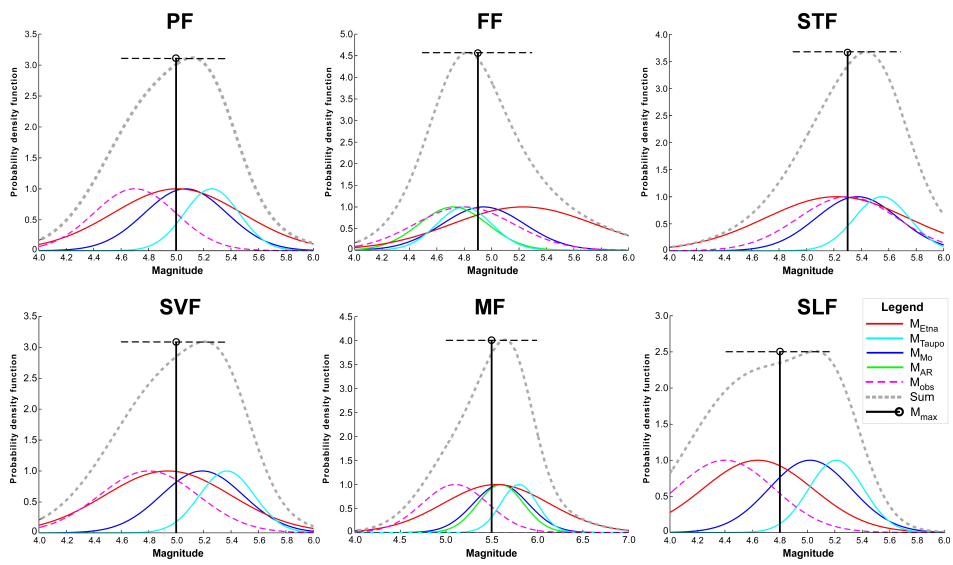


Fig. 11.

C12

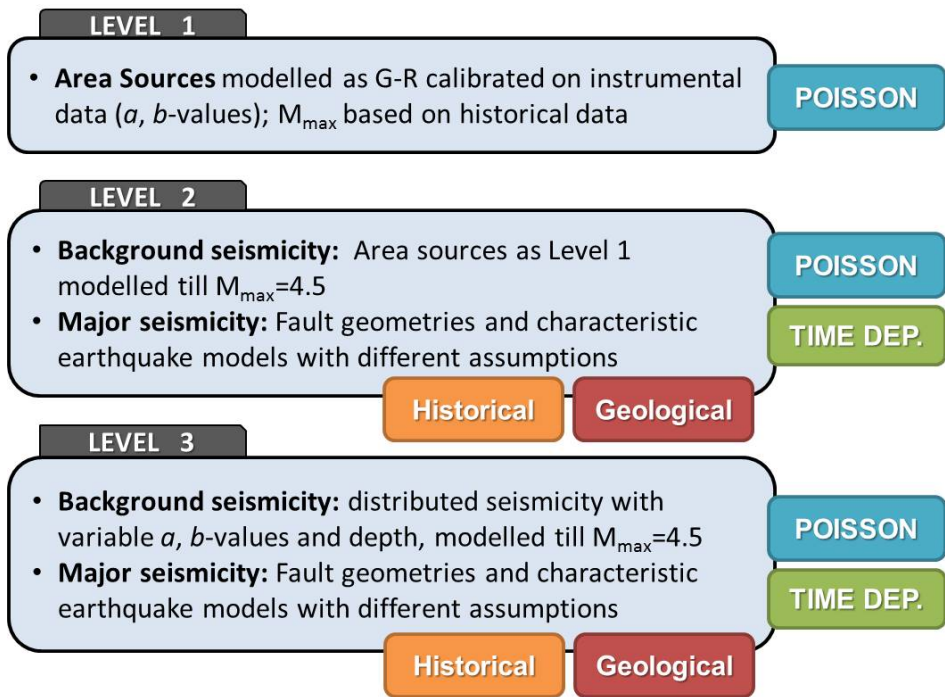


Fig. 12.