

Interactive comment on “Wave-optics uncertainty propagation and regression-based bias model in GNSS radio occultation bending angle retrievals” by Michael Gorbunov and Gottfried Kirchengast

Michael Gorbunov and Gottfried Kirchengast

gorbunov@ifaran.ru

Received and published: 11 September 2017

See the attached PDF file and Figures 3 and 8 from the revised version of the paper.

Please also note the supplement to this comment:

<https://www.atmos-meas-tech-discuss.net/amt-2017-145/amt-2017-145-AC2-supplement.pdf>

Interactive comment on Atmos. Meas. Tech. Discuss., doi:10.5194/amt-2017-145, 2017.

Printer-friendly version

Discussion paper



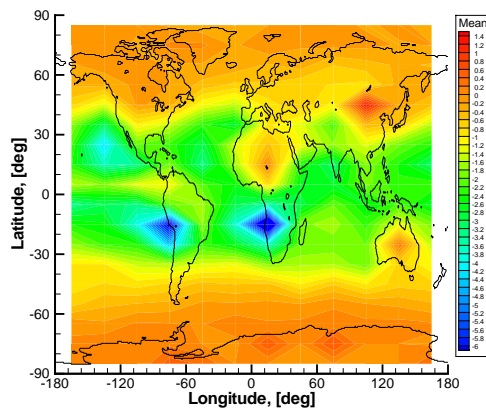


Figure 3. Deviation statistics obtained for real RO data: latitude-longitude map of inversion statistics of COSMIC observations relative to ECWFM profiles without fluctuations, for refractivity at altitude of 0.6 km. Results are shown for COSMIC events and concurrent ECWFM analysis fields from the 1st, 11th, and 21th day of every month of year 2008.

Fig. 1.

Printer-friendly version

Discussion paper



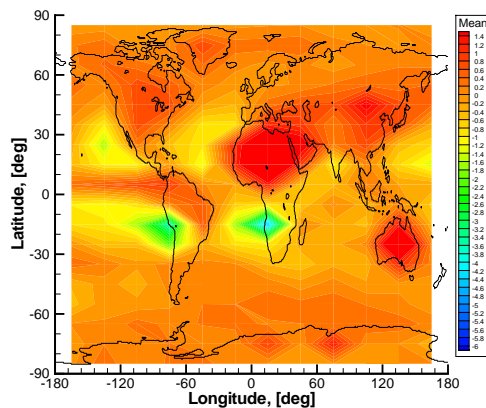


Figure 8. Deviation statistics based on original BLB-corrected bending angles:: latitude-longitude map of inversion statistics of COSMIC observations relative to ECWMF profiles without fluctuations, for refractivity at altitude of 0.6 km. Results are shown for COSMIC events and concurrent ECWMF analysis fields from the 1st, 11th, and 21th day of every month of year 2008.

Fig. 2.

Printer-friendly version

Discussion paper

